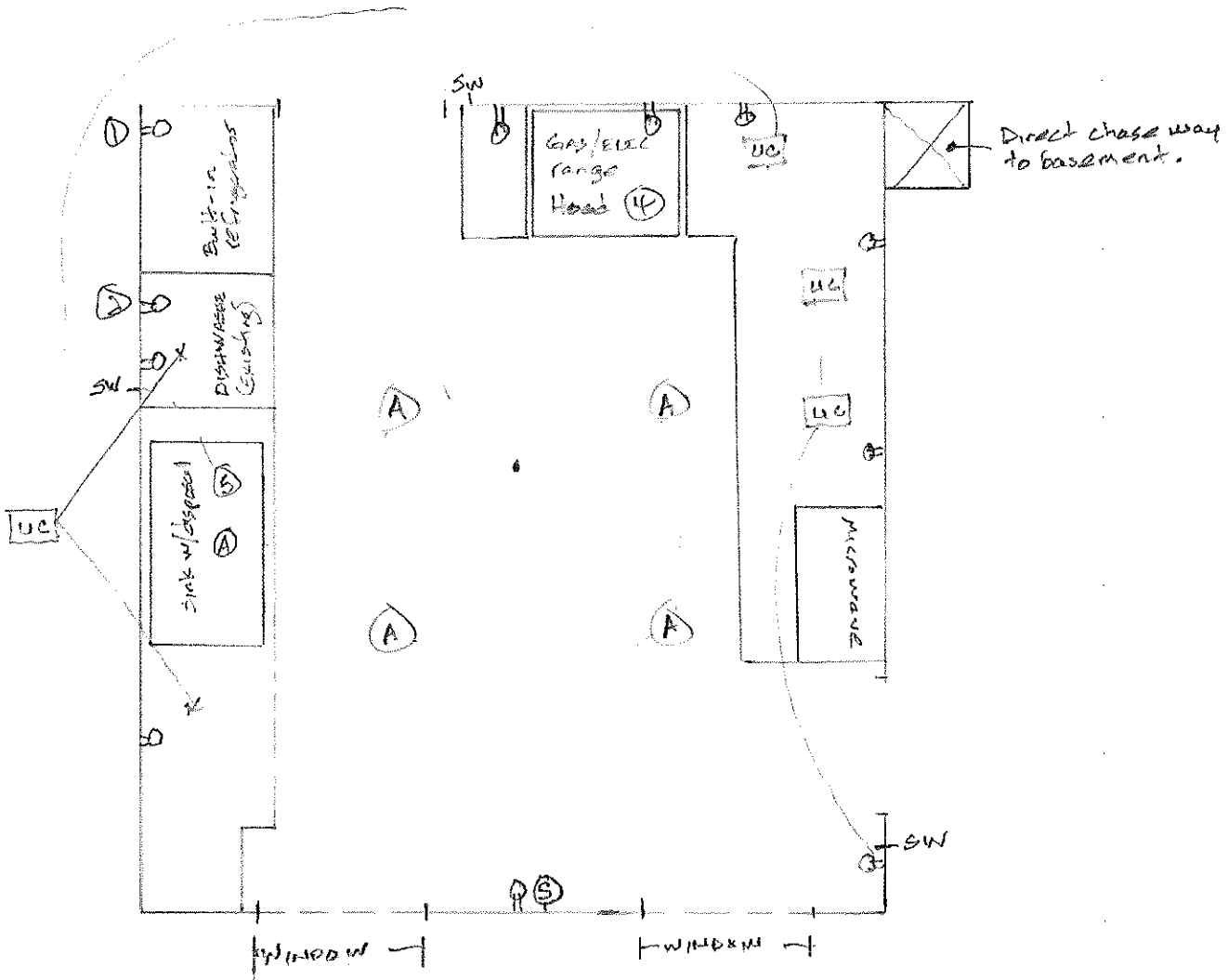


# Brooks Kitchen Remodel

207.828.3754

ELECTRICAL PLAN



- 1) Interior will be stripped to studs to assess/install electrical system
- 2) acceptable existing wiring may be utilized where permitted.
- 3) Lighting as follows
  - Ⓐ Can lights with 3-way switches at room entry
  - Ⓞ under cabinet lights with 3-way switch at room entry
  - Ⓟ wall sconce w switch near outlet

## Dedicated Circuits

- Ⓛ refrigerator
- Ⓜ dishwasher 120/20-amp 12ga
- Ⓝ Range (220)
- Ⓞ Hood wired to lighting circuit
- Ⓟ Disconnect wires to GFCI protected counter circuits