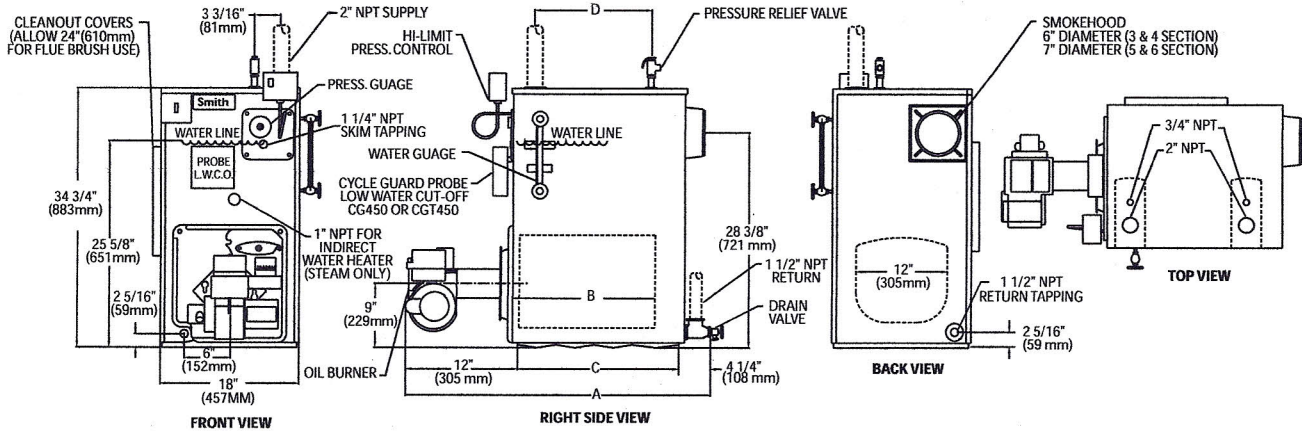


series 8

OIL FIRED RESIDENTIAL BOILER

Light Oil D.O.E. Heating capacity ratings 91,000 to 250,000 Btu/h.



Ratings, Burner Capacities, Chimney Sizes, Dimensions

Boiler Model Number	D.O.E. Heating Capacity MBH	Burner Capacity		Net Ratings			Natural Draft Chimney (Note 3)	A.F.U.E. %		Overall Length (Inches) A	Chamber Length (Inches) B	Boiler Length (Inches) C	Distance between Supply Tappings (Inches) D	Square Feet of Heating Surface	Chamber Volume (Cu. Ft.)	Water Content (Gal. for Steam)	Water Content (Gal. for Water)
		(Note 2) GPH	MBH	Water (Note 1) MBH	Steam (Note 1) MBH	Sq. Ft.		Water	Steam								
8-4-3L	91	.75	105	79	68	283	8x8x18'	86.2	85.6	33"	13-3/8"	16-3/4"	10-3/4"	12.19	0.832	9.8	11.7
8-4-3H	113	.95	133	98	84	350	8x8x18'	84.1	83.4	33"	13-3/8"	16-3/4"	10-3/4"	12.19	0.832	9.8	11.7
8-4-4L	133	1.10	154	116	99	413	8x8x17'	86.2	85.5	37-3/4"	18-1/8"	21-1/2"	15-1/2"	17.55	1.128	12.3	15.1
8-4-4H	150	1.25	175	130	112	467	8x8x17'	85.4	84.7	37-3/4"	18-1/8"	21-1/2"	15-1/2"	17.55	1.128	12.3	15.1
8-4-5L	169	1.40	196	147	126	525	8x8x16'	86.2	85.3	42-1/2"	22-7/8"	26-1/4"	20-1/4"	22.91	1.423	14.9	18.5
8-4-5H	203	1.70	238	177	152	633	8x8x16'	85.1	84.5	42-1/2"	22-7/8"	26-1/4"	20-1/4"	22.91	1.423	14.9	18.5
8-4-6L	211	1.75	245	183	157	654	8x8x15'	86.2	85.1	47-1/4"	27-5/8"	31"	25"	28.29	1.719	17.4	21.9
8-4-6H	249	2.10	294	217	186	775	8x8x15'	84.8	84.3	47-1/4"	27-5/8"	31"	25"	28.29	1.719	17.4	21.9

Standard Working Pressure 30 psi Water, 15 psi Steam. All Boilers Hydrostatically tested - A.S.M.E.

* Insert "s" for steam or "w" for water.

(Note 1) Net ratings shown are based on an allowance of 1.333 for steam or 1.15 for water.

(Note 2) Light oil having heat content of 140,000 BTU/Gal.

(Note 3) Nominal clay tile liner dimensions.

In the interest of product improvement we reserve the right to make changes without notice.

Crated Outside Dimensions

Boiler Number	Length (Inches)	Width (Inches)	Height (Inches)
8-4-3	33-1/2	22	37
8-4-4	38-1/4	22	37
8-4-5	43-1/4	22	37
8-4-6	48	22	37



Tankless Water Heater Capacities

Boiler Sections	Firing Rate (GPH)	Intermittent Flow GPM (1)		Continuous Flow GPM (1)	
		Water	Steam	Water	Steam
8-4-3L	.75	2.5	2.5	1.75	1.75
8-4-3H	.95	2.5	2.5	2.0	2.0
8-4-4L	1.00	3.3	3.3	2.5	2.5
8-4-4H	1.25	3.3	3.5	2.9	2.9
8-4-5L	1.35	3.8	3.5	3.3	3.0
8-4-5H	1.65	4.5	3.5	3.9	3.0
8-4-6L	1.75	4.6	3.5	4.0	3.0
8-4-6H	2.00	5.0	3.5	4.9	3.0

(1) Temperature rise 100°F, with boiler water at 180°F.

The manufacturer should be consulted before selecting a boiler for installations having unusual piping and pick-up requirements such as intermittent system operation, extensive piping systems, etc.

If draft over the fire exceeds .04" WC or is required by local codes, barometric damper must be supplied by the installing heating contractor.

For forced hot water heating systems where the boiler and all the piping are within the area to be heated, the boiler may be selected on the basis of its D.O.E. heating capacity.

Smith
CAST IRON BOILERS

Westcast, Inc., 260 North Elm Street, Westfield, MA 01085
(413) 562-9631 • FAX: (413) 562-3799

www.smithboiler.com

◆ A MESTEK COMPANY