

1 First Floor Egress Plan
SCALE: 1/4" = 1'-0"

CODE SUMMARY

APPLICABLE CODES

Maine Uniform Building and Energy Code "MUBEC"
Consists of the following applicable codes:

2009 International Building Code (IBC)
2009 International Existing Building Code (IEBC)
Maine State Internal Plumbing Code based on the 2009 Uniform Plumbing Code
2011 National Electrical Code (NEC)

Fire/ Life Safety

NFPA Life Safety Code as adopted by the State of Maine
Including but not limited to:

2009 NFPA 101: Life Safety Code

Accessibility

2010 ADA Standards for Accessible Design

NOTE: All Codes shall include changes/amendments by the State of Maine

OCCUPANCY CLASSIFICATION (IBC Sec 302, 303, 304) (NFPA)
Assembly A-3

AUTOMATIC SUPPRESSION SYSTEM (NFPA 13)
Automatic sprinkler system is not provided.

GENERAL BUILDING INFORMATION AND ALLOWABLE BUILDING HEIGHTS AND AREA (IBC Chapter 5, Table 503) (NFPA)
Building Height (To mid-height of the roof) - 24'-6"
Total Area: 3,960 SF
Perimeter: 297'

Allowable Building Height
50'2 Stories

Allowable Building Area

	OCCUPANCY (PER IBC CHAPTER 3)	CONSTRUCTION TYPE (PER IBC CHAPTER 6)	ALLOWABLE AREA (IBC TABLE 503 MODIFIED PER IBC 506)	ACTUAL AREA
GROUND FLOOR LEVEL	A-3	VA	11,500	2,618
FIRST FLOOR LEVEL	A-3	VA	11,500	1,350

Building Area Modifications
(IBC Sec 506.1, 506.2, 506.3)
N/A

REQUIRED OCCUPANCY SEPARATIONS
(IBC Table 508.4)
(NFPA)
N/A

TYPES OF CONSTRUCTION
(IBC Table 601, Sec 602)
(NFPA 220)
Type VA (Protected Wood)

FIRE RESISTIVE RATINGS
(IBC Table 601)
(NFPA Table A.8.2.1.2)

	TYPE VA	II (1,1,1)
STRUCTURAL FRAME	1	1
BEARING WALLS, EXTERIOR AND INTERIOR	1	1
NON-BEARING WALLS AND PARTITIONS, EXTERIOR	0	0
NON-BEARING WALLS AND PARTITIONS, INTERIOR	0	0
FLOOR CONSTRUCTION AND SECONDARY MEMBERS	1	1
ROOF CONSTRUCTION AND SECONDARY MEMBERS	1	1

OCCUPANCY LOAD
(IBC Table 1034.1.1)
(NFPA)
Business B 100 Gross Sqft per Occupant
Assembly A-3 300 Gross Sqft per Occupant

Reading- 50 Net Sqft per Occupant
Stacks- 100 Gross Sqft per Occupant
300 Gross Sqft per Occupant
300 Gross Sqft per Occupant

Accessory Storage
Mechanical 300 Gross Sqft per Occupant

MEANS OF EGRESS
(IBC Chapter 10)

EGRESS WIDTH PER OCCUPANT
(IBC 1005.1)
(IEBC Table 1301.6.11(1))
0.3 Inches per occupant for stairways
0.2 Inches for other egress components

STAIRWAY WIDTH
(IEBC 1301.6.11)
0.3 Inches per occupant

EXIT ACCESS

Common path of egress travel
(IBC 1014.3)
(IBC 1028.3)
For Assembly <30'
For Business <75'

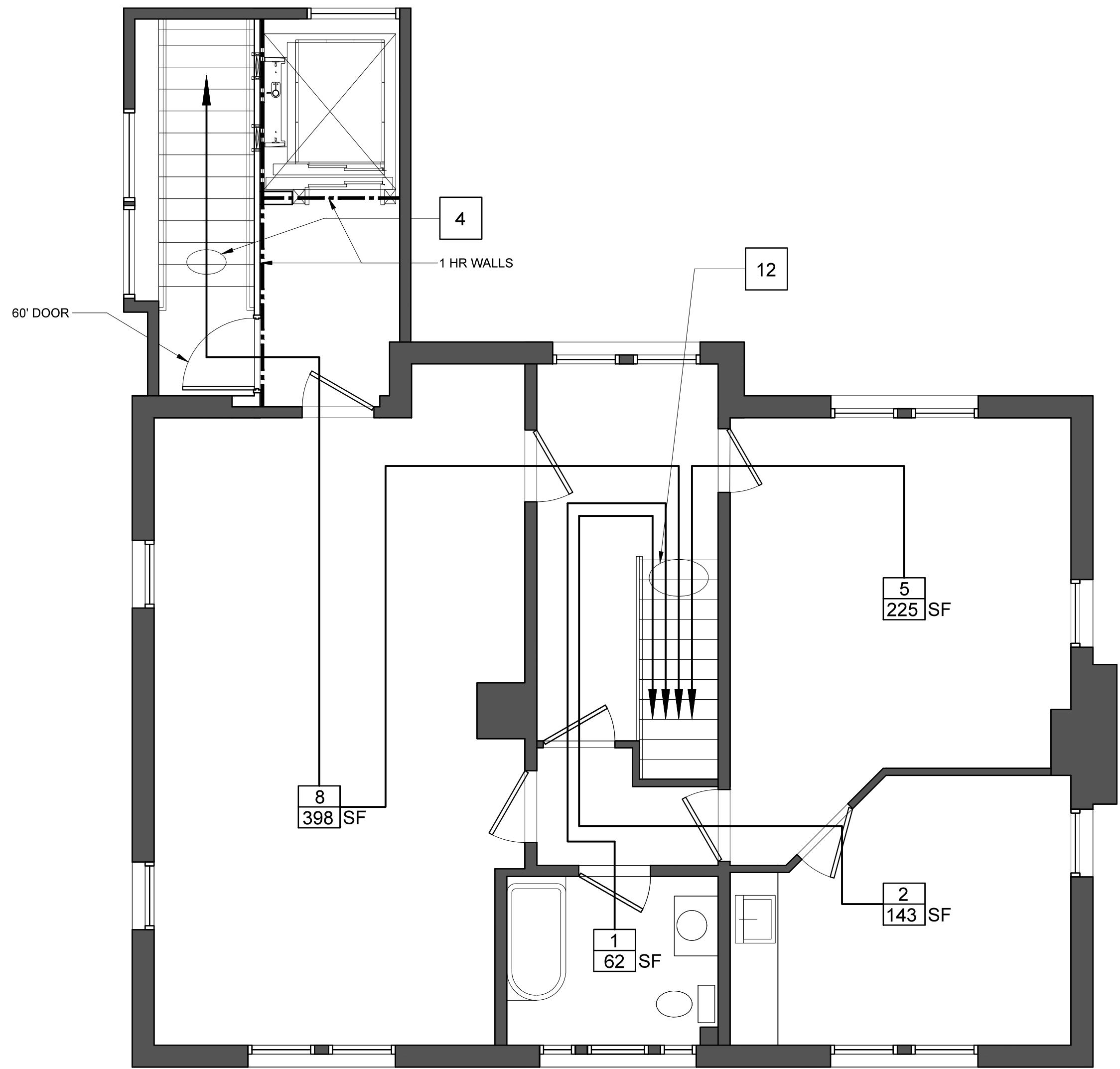
Corridor Fire Resistance
(IBC 1018.1)
1 hour

Corridor Width
(IBC 1018.2)
Not less than 44"

Dead-End Corridor
(IEBC 705.9)
Dead-end corridors in occupancy A-3 ≤20'

Travel distance to exit: 250'

PLUMBING FIXTURE COUNT
(IBC Table 2902.1)



2 Second Floor Egress Plan
SCALE: 1/4" = 1'-0"

SECOND FLOOR SCOPE OF WORK LIMITED, OCCUPANVIES EXISTING TO REMAIN

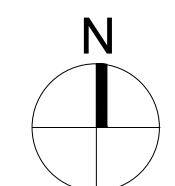
LIFE SAFETY PLAN LEGEND

SEE A102 FOR PARTITION TYPES

X OCCUPANTS
XXX SF ROOM AREA

1-HOUR FIRE RATED SEPARATION WITH 1 HOUR OPENINGS

SMOKE SEPARATION WITH 20 MINUTE OPENINGS



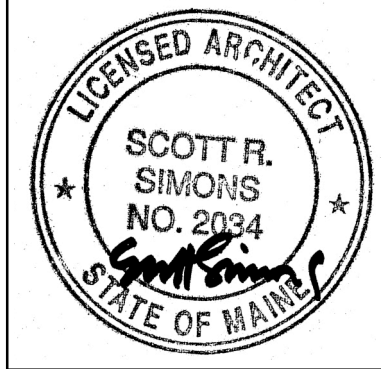
LDD PROJECT NAME:
N/A
DRAWING NAME:
FIELD BOOK USED:
N/A

Scott Simons Architects
75 York Street, Portland, Maine 04101
www.scottsimonsarchitects.com
207.772.4656

424 Fore Street
Portland, Maine 04101
Phone: 207.842.2800
Fax: 207.842.2828
www.cascobayengineering.com

REFERENCES:

DESIGNED BY: AKS
DRAWN BY: KC
CHECKED BY: AKS
SCALE: AS SHOWN
DATE: 10/16/15



PORTLAND PUBLIC LIBRARY
BURBANK BRANCH
377 Stevens Avenue
Deering Center
Portland, Maine 04103

CITY OF PORTLAND, MAINE
Addition + Renovation for
The Burbank Branch Library
ISSUED FOR BIDDING

CODE SUMMARY + LIFE SAFETY PLAN

SHEET # **G002**
PLAN NUMBER