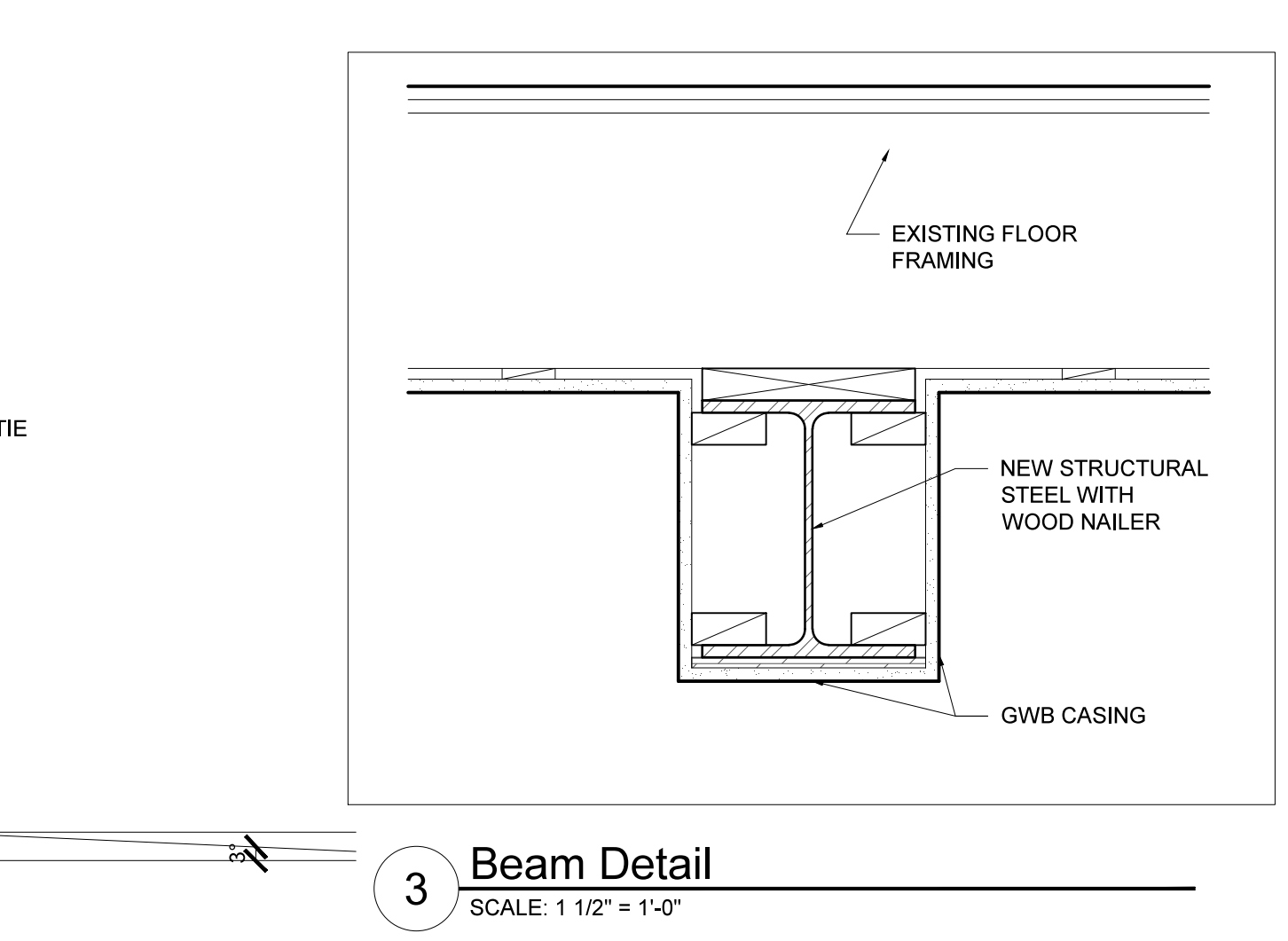
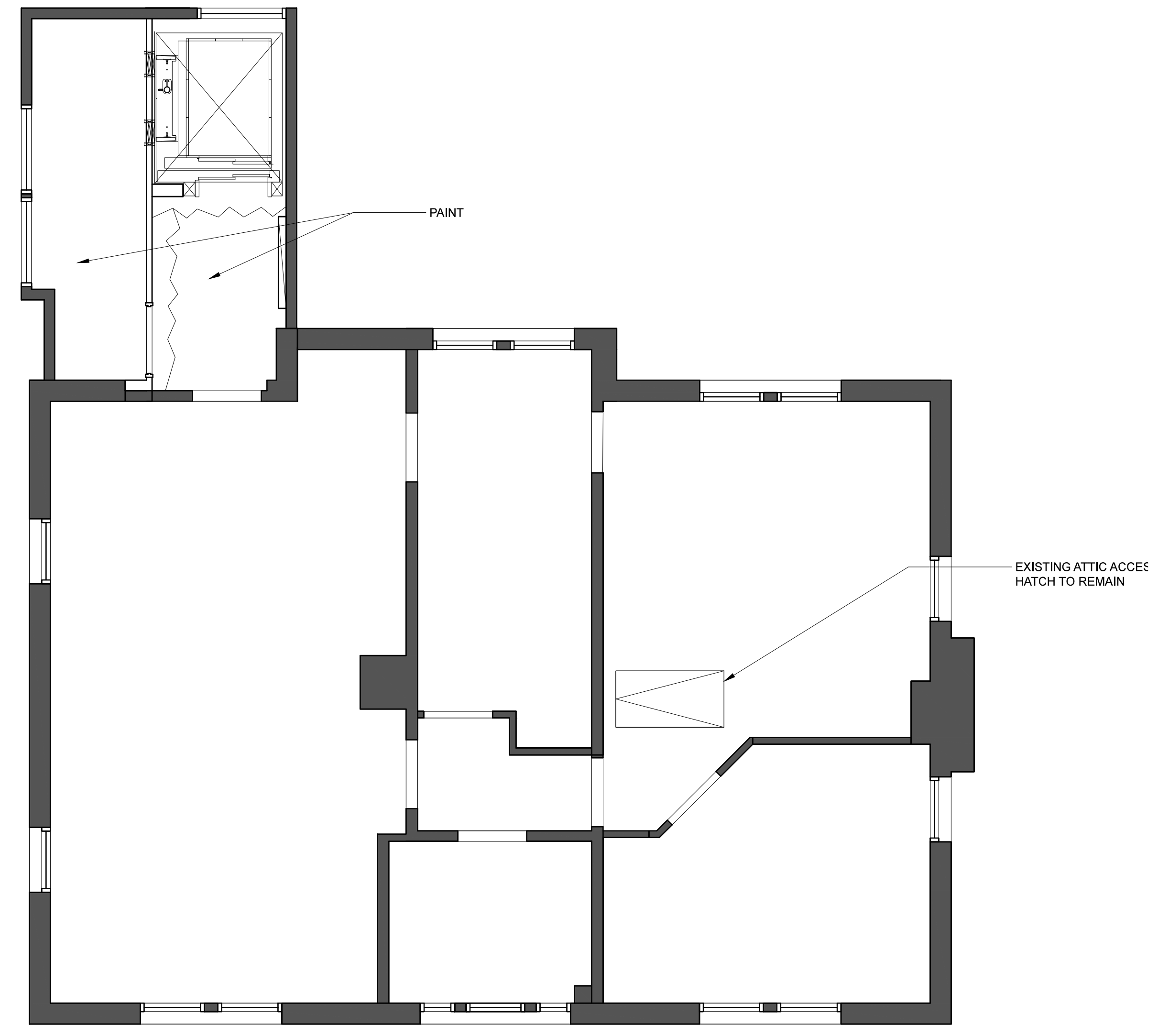


1 First Floor Reflected Ceiling Plan
SCALE: 1/4" = 1'-0"

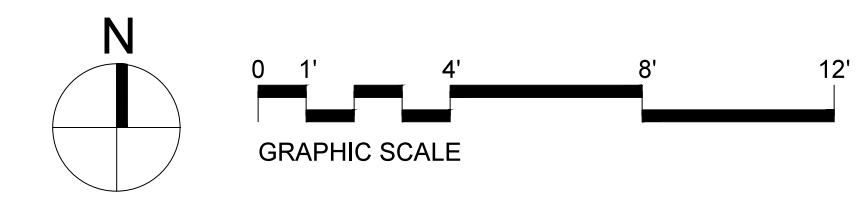


3 Beam Detail
SCALE: 1 1/2" = 1'-0"



2 Second Floor Reflected Ceiling Plan
SCALE: 1/4" = 1'-0"

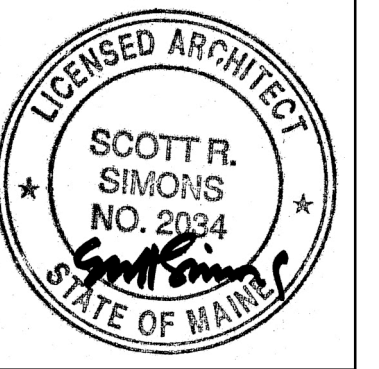
GENERAL NOTES:
1. SEE E2.1, E2.2 FOR MORE INFO ON LIGHT FIXTURES LOCATIONS.
2. PATCH AND PAINT FINISHES TO MATCH EXISTING WHERE DEVICES WERE REMOVED, TYPICAL.



LDD PROJECT NAME: N/A
DRAWING NAME: N/A
FIELD BOOK USED: N/A
Scott Simons Architects
75 York Street, Portland, Maine 04101
www.scottsimonsarchitects.com
207.772.4656
424 Fore Street
Portland, Maine 04101
Phone: 207.842.2860
Fax: 207.842.2828
www.cascobayengineering.com



REFERENCES:
DESIGNED BY: AKS
DRAWN BY: KC
CHECKED BY: AKS
SCALE: AS SHOWN
DATE: 10/16/15



PORTLAND PUBLIC LIBRARY
BURBANK BRANCH
377 Stevens Avenue
Deering Center
Portland, Maine 04103

CITY OF PORTLAND, MAINE
Addition + Renovation for
The Burbank Branch Library
ISSUED FOR BIDDING

FIRST AND SECOND FLOOR REFLECTED CEILING PLANS
SHEET # **A131**
PLAN NUMBER