

AIR CONDITIONING SYSTEM SCHEDULE

TAG	AREA SERVED	NOM. TONS	AIR HANDLER					OUTDOOR UNIT			REFRIGERANT			SYSTEM POWER			REMARKS		
			CFM	MCA	WATTS	EDB	EWB	WEIGHT	AMBIENT	MCA	WEIGHT	TYPE	LIQUID	GAS	VOLTS	WATTS		BRK'R	SEER
AH-1 / OU-1	106A PROCESSING	1.25	420	1.00	30	80°	67°	22	95°	12.0	80	R410A	1/4"	1/2"	208V-60-1P	1,080	15	21.60	POWER AH-1 THROUGH OU-1
AH-2 / OU-2	106B OFFICE	0.75	320	1.00	30	80°	67°	22	95°	12.0	66	R410A	1/4"	3/8"	208V-60-1P	660	15	23.20	POWER AH-2 THROUGH OU-2
AH-3 / OU-3	102 PUBLIC COMPUTING	1.25	420	1.00	30	80°	67°	22	95°	12.0	80	R410A	1/4"	1/2"	208V-60-1P	1,080	15	21.60	POWER AH-3 THROUGH OU-3
AH-4 / OU-4	110 CHILDREN'S	2.00	630	1.00	158	80°	67°	37	95°	17.1	119	R410A	3/8"	5/8"	208V-60-1P	1,800	20	19.00	POWER AH-4 THROUGH OU-4
AH-5 / OU-5	109 ADULT FICTION	1.25	420	1.00	30	80°	67°	22	95°	12.0	80	R410A	1/4"	1/2"	208V-60-1P	1,080	15	21.60	POWER AH-5 THROUGH OU-5
AH-6 / OU-6	206 STAFF ROOM	1.00	320	1.00	30	80°	67°	22	95°	12.0	77	R410A	3/8"	1/4"	208V-60-1P	960	15	22.70	POWER AH-6 THROUGH OU-6
AH-7 / OU-7	202 ADULT NON-FICTION	1.00	320	1.00	30	80°	67°	22	95°	12.0	77	R410A	3/8"	1/4"	208V-60-1P	960	15	22.70	POWER AH-7 THROUGH OU-7
AH-8 / OU-8	207 COLLECTION	1.00	320	1.00	30	80°	67°	22	95°	12.0	77	R410A	3/8"	1/4"	208V-60-1P	960	15	22.70	POWER AH-8 THROUGH OU-8

UNIT HEATER SCHEDULE

TAG	TYPE	AREA SERVED	E.W.T.	E.A.T.	MBH	GPM	W.P.D.	CFM	MOTOR HP	FAN RPM	ELECTRIC	REMARKS
CUH-1	VERT. CABINET	106A PROCESSING	180	60	17.18	0.75	1.00"	167	1/8	823	120V-60-1P	FLOOR MTD, TOP DISCHARGE

FAN SCHEDULE

TAG	AREA SERVED	TYPE	CFM	SP	SONES	RPM	WATTS	ELECTRIC	WEIGHT	REMARKS
EF-3	E.M.R. 002	CEILING	105	0.10"	1.7	900	36	120V-60-1P	10	OPERATE FROM 120V COOLING TSTAT
PF-1	PROCESSING 106A	36" PADDLE	2,525	0.00"	---	395	75	120V-60-1P	20	OPERATE FROM SPEED SWITCH

NOTE: SOME RATINGS ARE MINIMUMS NOT TO BE EXCEEDED. HWI SONE RATINGS WILL NOT BE ACCEPTED. EF-1 & EF-2 ARE EXISTING.

PUMP SCHEDULE

TAG	TYPE	AREA SERVED	GPM	HEAD	HP	RPM	WATTS	ELECTRIC	REMARKS
P5	IN-LINE	BOILER INJECTION PUMP	25	22'	1/4	3,050 -> 3,250	305 -> 315	120V-60-1P	ECM MOTOR

PUMPS P1 THRU P4 ARE EXISTING TO REMAIN.

FINNED PIPE SCHEDULE

TAG	TYPE	ELEMENT	LENGTH	AWT	BTU/LF	GPM	REMARKS
FP	9.1/16" COVER	3/4" COPPER TUBE 3.1/4" x 3.1/4" FINS	SEE PLANS	150	565	0.67 PER MBH (1.0 MINIMUM)	RESIDENTIAL STYLE HIGH OUTPUT

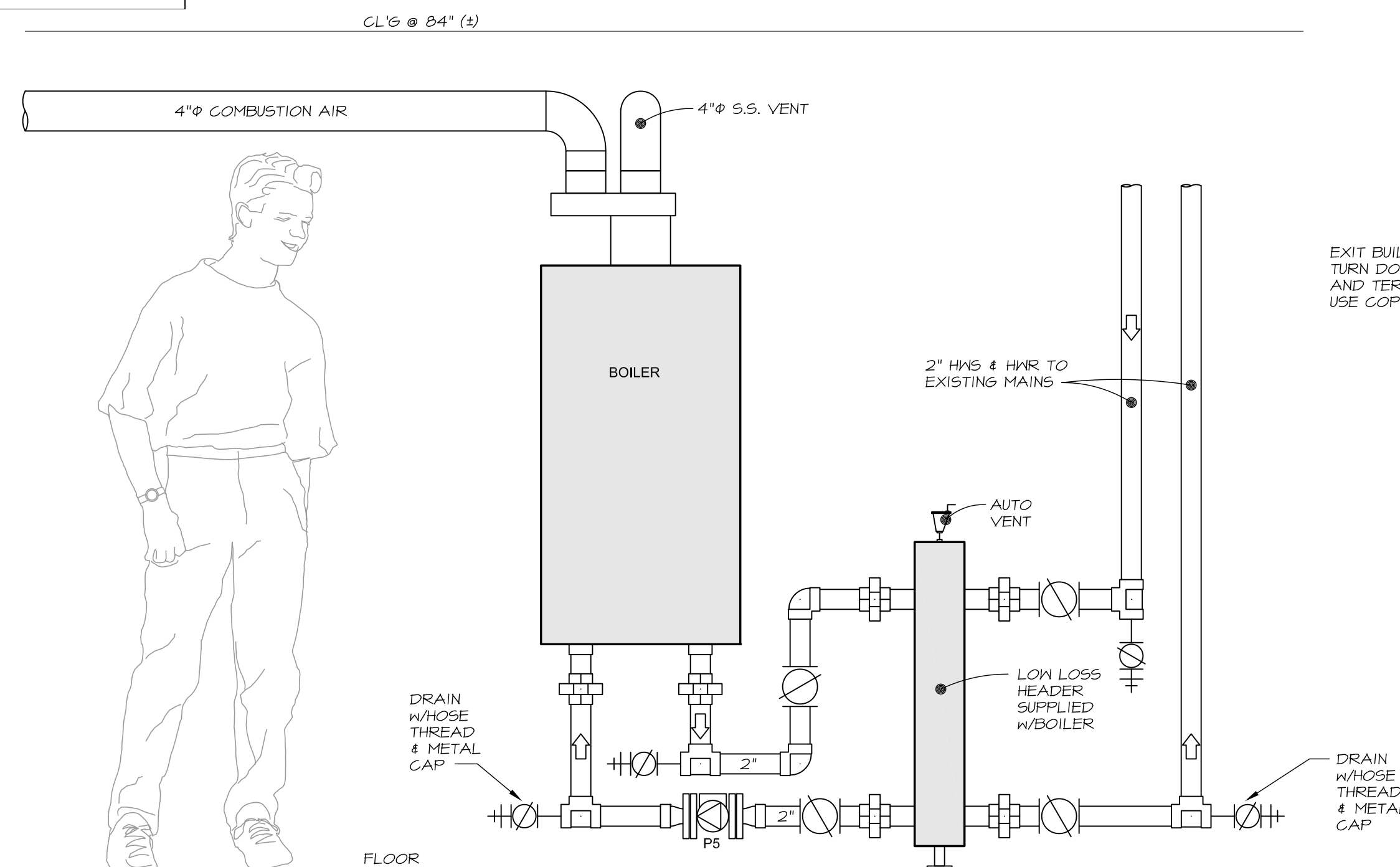
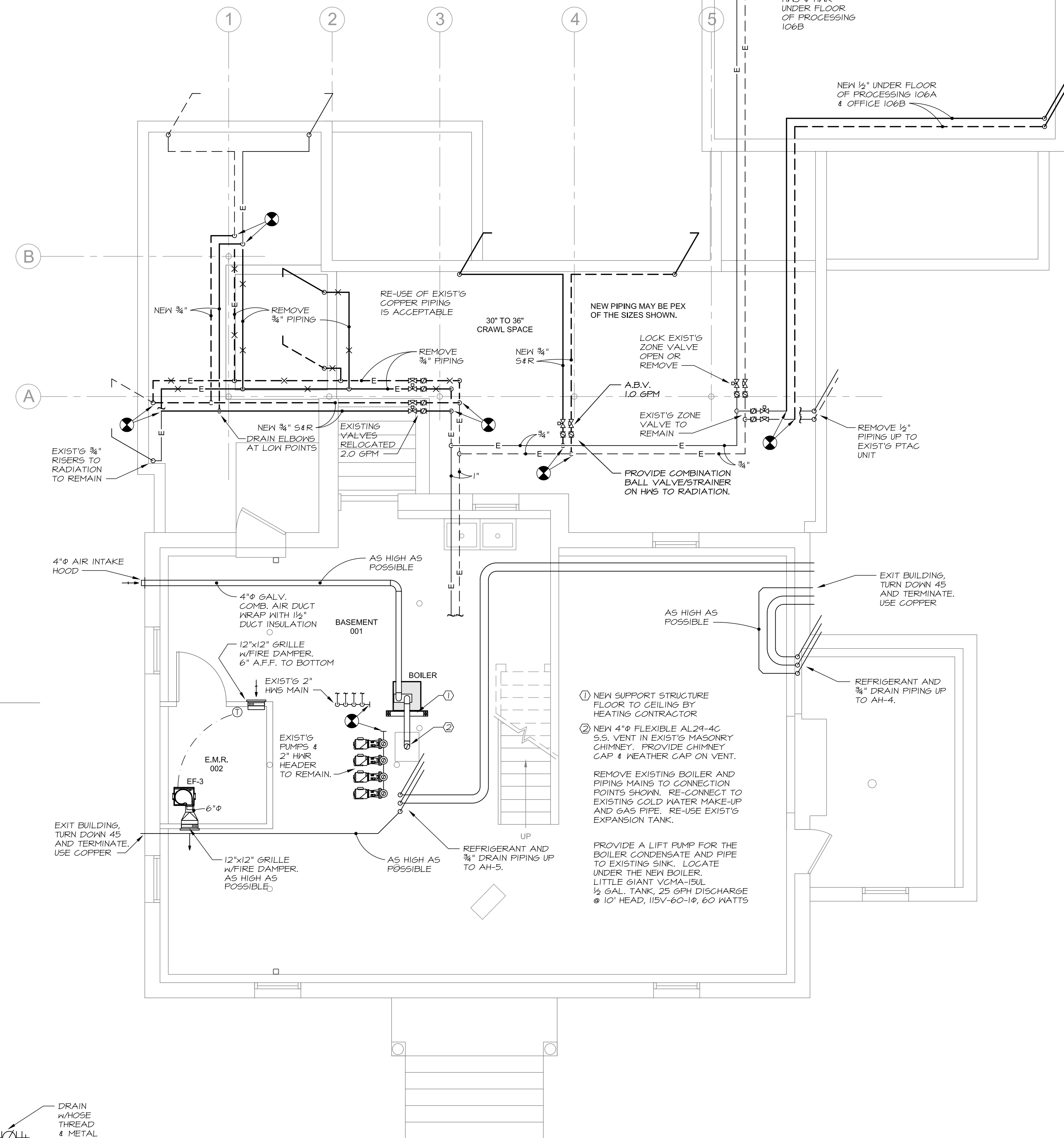
BOILER SCHEDULE

TAG	GROSS MBH	NET MBH	HP	FUEL	RELIEF VALVE	WATER CONTENT	ELECTRIC AMPS	VOLTAGE	REMARKS
B-1	212.0	169.0	6.3	NAT. GAS	30 psig	1.90 GAL	5	120V-60-1P	CONDENSING GAS BOILER

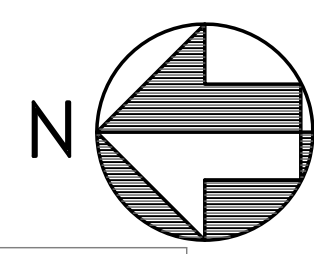
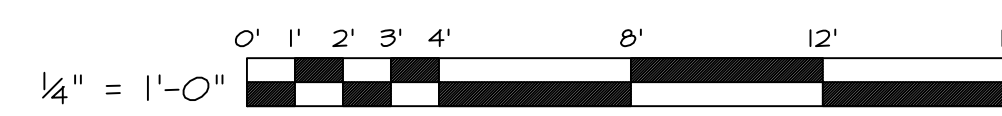
GENERAL NOTES

- Mechanical Contractor shall coordinate work with all other trades.
- Piping and ductwork is shown diagrammatically. Exact locations to be adjusted as required to conform to field conditions.
- All cutting and patching by the General Contractor.
- All dimensions associated with existing conditions are approximate and are to be field verified.
- Heating system design is based on 180°F. Water.
- All new branch water piping to individual terminal heating units or zones shall be not less than 1/2 inches in size unless noted otherwise.
- All removed materials shall remain the property of the Owner until such time the Owner's authorized representative has reviewed the removed items and taken what the Owner wishes to retain. All remaining items shall become the property of the Contractor and shall be immediately removed from the premises by the Contractor.

AIR HANDLERS, OUTDOOR UNITS, PIPING, INSULATION AND CONTROLS TO BE BID AS AN ADD ALTERNATE.



BOILER PIPING DIAGRAM
NO SCALE

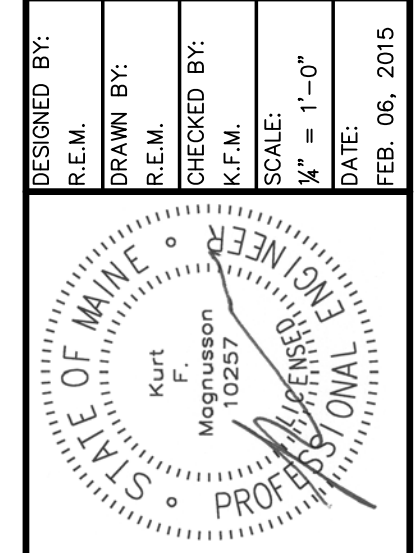


LOD PROJECT NAME: N/A
DRAWING NAME: N/A
FIELD BOOK USED: N/A

Scott Simons Architects
Portland, Maine 04101
www.scottdesign.com
207.772.4656

REFERENCES:

DESIGNED BY: R.E.M.
DRAWN BY: R.E.M.
CHECKED BY: R.E.M.
SCALE: 1/4" = 1'-0"
DATE: FEB. 06, 2015



PORTLAND PUBLIC LIBRARY
BURBANK BRANCH
377 Stevens Avenue
Deering Center
Portland, Maine 04103

CITY OF PORTLAND, MAINE
Addition + Renovation for
The Burbank Branch Library
Issued for permitting

BASEMENT MECHANICAL PLAN

SHEET # **M1**

PLAN NUMBER

MECHANICAL SYSTEMS ENGINEERS
ROYAL RIVER CENTER, UNIT 108
10 FOREST FALLS DRIVE, YARMOUTH, MAINE 04096
(207) 846-1441
FACEBOOK: MECHANICAL SYSTEMS ENGINEERS
© COPYRIGHT 2015

