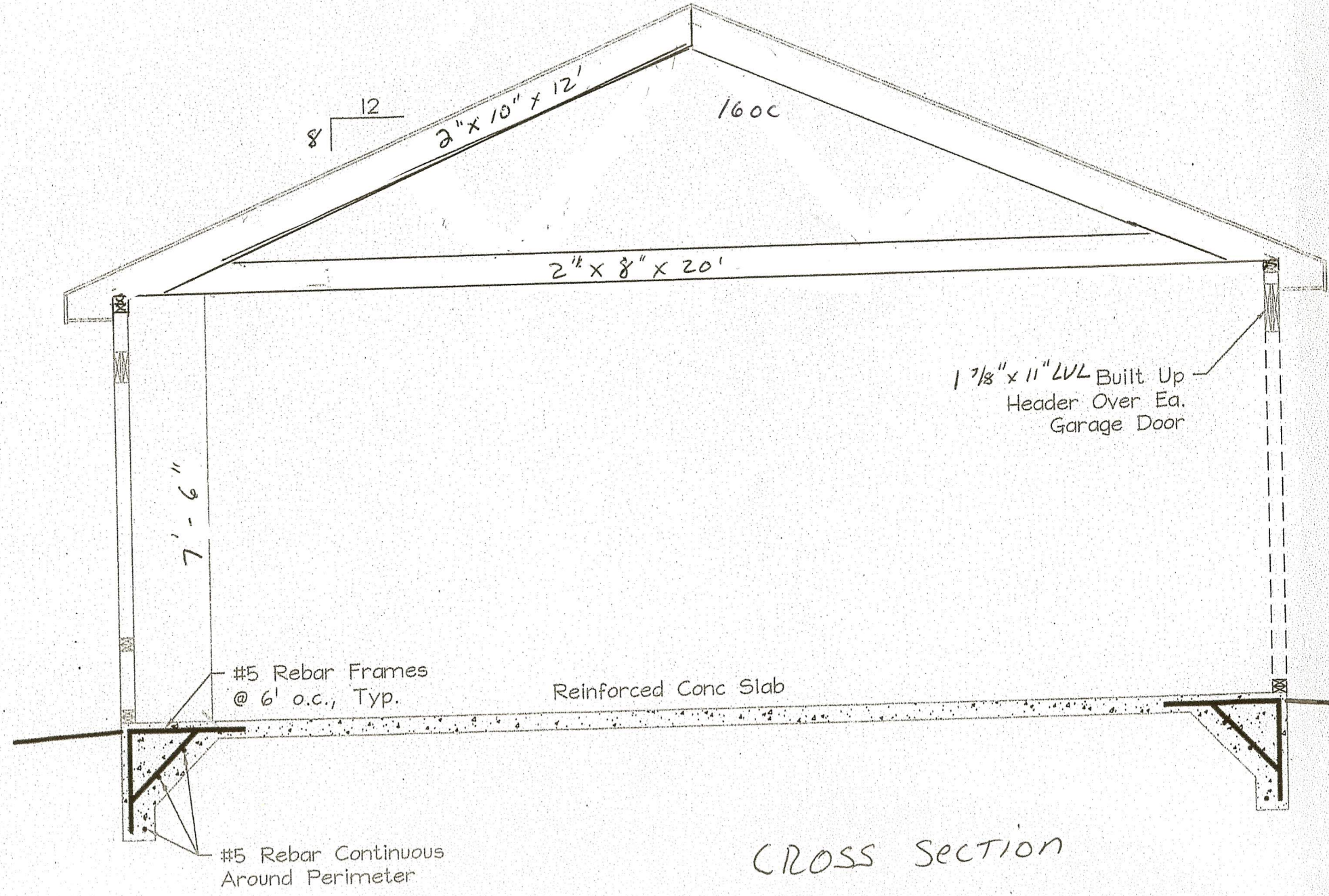


Eave/Fascia Construction:  
Ice & Water Shield (First 3')  
8" Aluminum Dripedge  
1x8 Azek Fascia  
Vented Soffit



8 | 12

2" x 10" x 12"

160c

2" x 8" x 20"

7'-6"

1 7/8" x 11" LVL Built Up Header Over Ea. Garage Door

#5 Rebar Frames @ 6' o.c., Typ.

Reinforced Conc Slab

#5 Rebar Continuous Around Perimeter

CROSS SECTION