

**SUBMITTAL DATA: MXZ-2B20NA-1**
**MULTI-INDOOR INVERTER HEAT-PUMP SYSTEM**

Job Name: \_\_\_\_\_ Location: \_\_\_\_\_ Date: \_\_\_\_\_

Purchaser: \_\_\_\_\_ Engineer: \_\_\_\_\_

Submitted to: \_\_\_\_\_ For  Reference  Approval  Construction

Unit Designation: \_\_\_\_\_ Schedule No.: \_\_\_\_\_

**GENERAL FEATURES**

- Compact side discharge outdoor unit
- Wireless or wired remote controller, depending on the indoor units used
- Quiet operation—both indoor and outdoor units
- Automatic fan speed control
- Auto restart following a power outage
- Self-check function—integrated diagnostics
- Advanced microprocessor control
- Limited warranty: five years on parts and defects and seven years on compressors



Outdoor Unit: MXZ-2B20NA-1

**OPTIONAL OUTDOOR UNIT ACCESSORIES**

- Air Outlet Guide (MAC-889SG)
- 3/8" x 1/2" Port Adapter (MAC-A454JP; for use with 15,000 Btu/h Indoor units)

**Cooling\***

Rated Capacity (Non-ducted/Ducted) . . . 18,000 Btu/h / 20,000 Btu/h  
 Minimum Capacity (Non-ducted/Ducted) . . . 7,800 Btu/h / 7,800 Btu/h  
 Total Input (Non-ducted/Ducted) . . . . . 1,440 W / 2,190 W

**Heating at 47°F\***

Rated Capacity (Non-ducted/Ducted) . . . 22,000 Btu/h / 22,000 Btu/h  
 Minimum Capacity (Non-ducted/Ducted) . . . 8,500 Btu/h / 8,500 Btu/h  
 Total Input (Non-ducted/Ducted) . . . . . 1,650 W / 1,780 W

**Heating at 17°F\***

Rated Capacity (Non-ducted/Ducted) . . . 12,500 Btu/h / 12,500 Btu/h  
 Total Input (Non-ducted/Ducted) . . . . . 1,350 W / 1,430 W

\* Rating Conditions (Cooling) - Indoor: 80°F (27°C) DB / 67°F (19°C) WB. Outdoor: 95°F (35°C) DB / 75°F (24°C) WB.  
 (Heating) - Indoor: 70°F (21°C) DB / 60°F (16°C) WB. Outdoor: 47°F (8°C) DB / 43°F (6°C) WB.  
 (Heating at 17°F) - Indoor: 70°F (21°C) DB / 60°F (16°C) WB. Outdoor: 17°F (-8°C) DB / 15°F (-9°C) WB.

(For data on specific indoor units [all ducted, all non-ducted, and both ducted and non-ducted] combinations, see the Technical and Service Manuals.)

**Electrical Requirements**

Power Supply . . . . . 208 / 230V, 1-Phase, 60 Hz  
 Recommended Fuse/Breaker Size . . . . . 20 A  
 MCA . . . . . 15 A

**Voltage**

Indoor - Outdoor S1-S2 . . . . . AC 208 / 230V  
 Indoor - Outdoor S2-S3 . . . . . DC 12 - 24V

**OPERATING RANGE**

		Indoor Intake Air Temp.		Outdoor Intake Air Temp.
Cooling	Maximum	95°F (35°C) DB, 71°F (22°C) WB	115°F (46°C) DB	14°F (-10°C) DB
	Minimum	67°F (19°C) DB, 57°F (14°C) WB	14°F (-10°C) DB	
Heating	Maximum	80°F (27°C) DB, 67°F (19°C) WB	75°F (24°C) DB, 65°F (18°C) WB	
	Minimum	70°F (21°C) DB, 60°F (16°C) WB	6°F (-14°C) DB, 5°F (-15°C) WB	

Compressor . . . . . DC Inverter-driven Twin Rotary Fan Motor . . . . . 0.96 F.L.A.

**Sound Pressure Level**

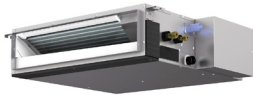
Cooling (Non-ducted/Ducted) . . . . . 49 dB(A)  
 Heating (Non-ducted/Ducted) . . . . . 51 dB(A)

DIMENSIONS	INCHES / MM
W	33-1/16 / 840
D	13 / 330
H	27-15/16 / 710

Weight . . . . . 130 lbs. / 59 kg  
 External Finish . . . . . Munsell No. 3Y 7.8 / 1.1  
 Refrigerant Type . . . . . R410A  
 Refrigerant Pipe Size O.D. — Two Ports  
 Gas Side . . . . . A, B: 3/8" / 9.52 mm  
 Liquid Side . . . . . 1/4" / 6.35 mm  
 Max. Refrigerant Pipe Length . . . . . 164' / 50 m  
 Max. Piping Length for Each Indoor Unit . . . . . 82' / 25 m  
 Max. Refrigerant Pipe Height Difference  
 If Indoor Unit is Above Outdoor Unit . . . . . 49' / 15 m  
 If Indoor Unit is Below Outdoor Unit . . . . . 33' / 10 m  
 Connection Method . . . . . Flared

**COMPATIBLE INDOOR UNITS AND ASSOCIATED REMOTE CONTROLLERS**

Horizontal-ducted Indoor Units: SEZ-KD09,12,15NA


 Remote Controller PAR-21MAA -  
 Packaged with SEZ

Wall-mounted Indoor Units: MSZ-GE06,09,12,15NA


 Wireless Remote Controller -  
 Packaged with MSZ-GE, -FE, and  
 MFZ-KA (Optional Wired PAR-21-  
 MAA Remote Controller)

Wall-mounted Indoor Units:  
 MSZ-FE09,12NA



Floor-standing Indoor Units:  
 MFZ-KA09,12NA



Refer to the separate submittal forms for the SEZ, MSZ, and MFZ Indoor Units.

**MXZ-2B20NA-1 ENERGY EFFICIENCIES**

Indoor Unit Type	SEER	EER	HSPF	COP @ 47°F	COP @ 17°F
Non-ducted (09 + 09)	18.0	12.5	8.9	3.91	2.71
Ducted and Non-ducted	16.75	10.8	8.7	3.77	2.64
Ducted (09 + 12)	15.5	9.10	8.5	3.62	2.56



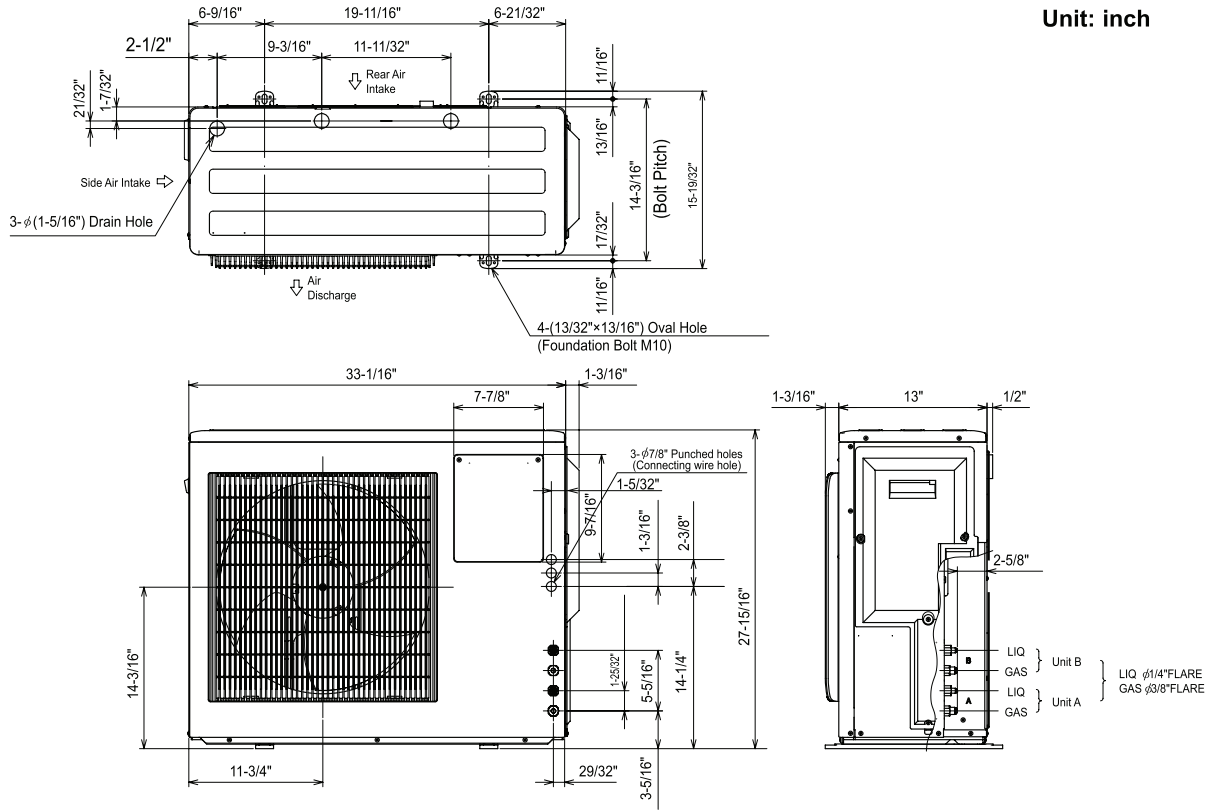
## MXZ-2B20NA-1 OPERATION PERFORMANCE

- Minimum of two Indoor Units must be connected to the MXZ-2B20NA-1.
- Minimum installed capacity cannot be less than 12,000 Btu/h.
- System can operate with only one Indoor Unit turned on (see table below for single Indoor Unit performance).
- Indoor Units can be All Non-ducted, All Ducted, or a Combination of Non-ducted and Ducted (Select style as installation requires).
- Information provided at 208/230V. Refer to the MXZ Outdoor Unit Service Manual for detailed specifications and additional information per Indoor Unit Combination.

Operation Performance for Indoor Unit Combinations (Unit A + Unit B)	Cooling Capacity Range (Btu/h)			Power Usage Range (W)
	Heating Capacity Range (Btu/h)			
	Unit A	Unit B	Total Range	
6	6,000	-	5,400 - 9,000	490 - 680
	7,400	-	5,200 - 14,400	480 - 1,400
9	9,000	-	5,400 - 9,000	490 - 750
	10,900 - 11,000	-	5,200 - 15,400	480 - 1,430
12	12,000	-	5,400 - 12,000	490 - 1,010
	13,600	-	5,200 - 16,400	480 - 1,460
15	15,000	-	5,400 - 15,000	490 - 1,560
	18,000	-	5,200 - 21,100	480 - 2,100
6 + 6	6,000	6,000	7,800 - 15,000	510 - 1,820
	7,400	7,400	8,500 - 25,500	520 - 2,410
6 + 9	6,000	9,000	7,800 - 18,000	630 - 1,820
	7,400	10,900 - 11,000	8,500 - 25,500	520 - 1,400
6 + 12	6,000	12,000	7,800 - 20,000	630 - 1,820
	7,400	13,600	8,500 - 25,500	520 - 2,520
6 + 15	5,800	14,200	7,800 - 23,000	630 - 2,230
	6,400	15,600	8,500 - 25,500	520 - 2,520
9 + 9	9,000	9,000	7,800 - 20,000	630 - 1,820
	10,900 - 11,000	10,900 - 11,000	8,500 - 25,500	520 - 2,620
9 + 12	8,500	11,500	7,800 - 20,000	630 - 2,230
	9,500	12,500	8,500 - 25,500	520 - 2,620
9 + 15	7,500	12,500	7,800 - 23,000	630 - 2,230
	8,250	13,750	8,500 - 25,500	520 - 2,620
12 + 12	10,000	10,000	7,800 - 23,000	630 - 2,230
	11,000	11,000	8,500 - 25,500	520 - 2,620

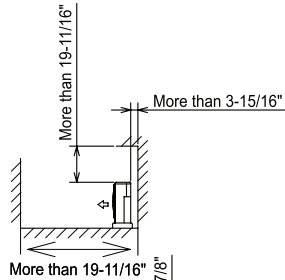
# DIMENSIONS: MXZ-2B20NA-1

Unit: inch

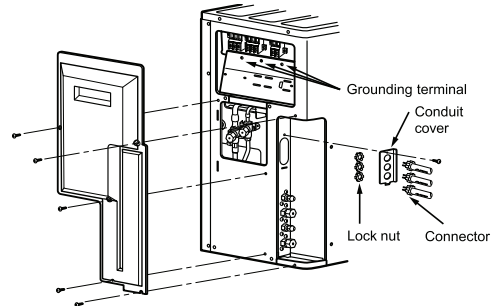
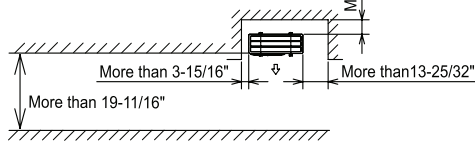


## 1. Installation space

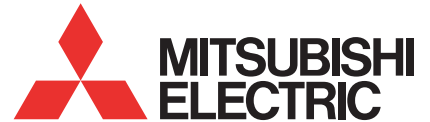
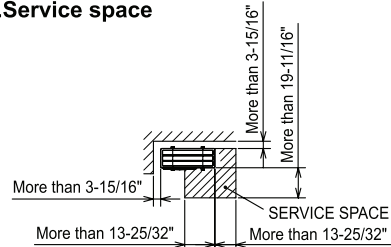
Note : Leave both sides free of obstruction.



Note : Leave overhead free of obstruction.



## 2. Service space



**HVAC Advanced Products Division**  
 3400 Lawrenceville Suwanee Rd  
 Suwanee, GA 30024  
 Tele: 678-376-2900 • Fax: 800-889-9904  
 Toll Free: 800-433-4822 (#3)  
 www.mehvac.com  
**Specifications are subject to change without notice.**