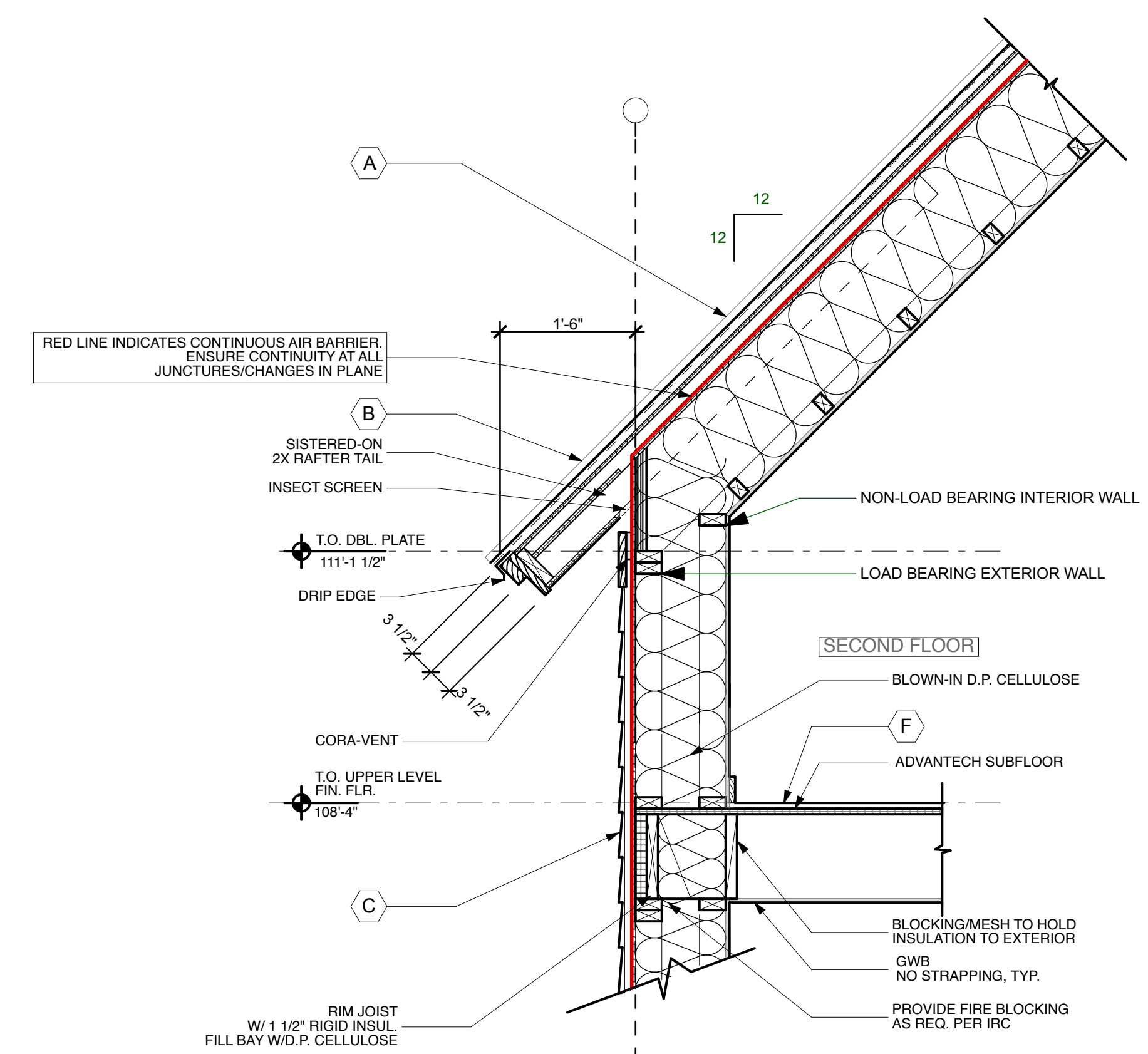
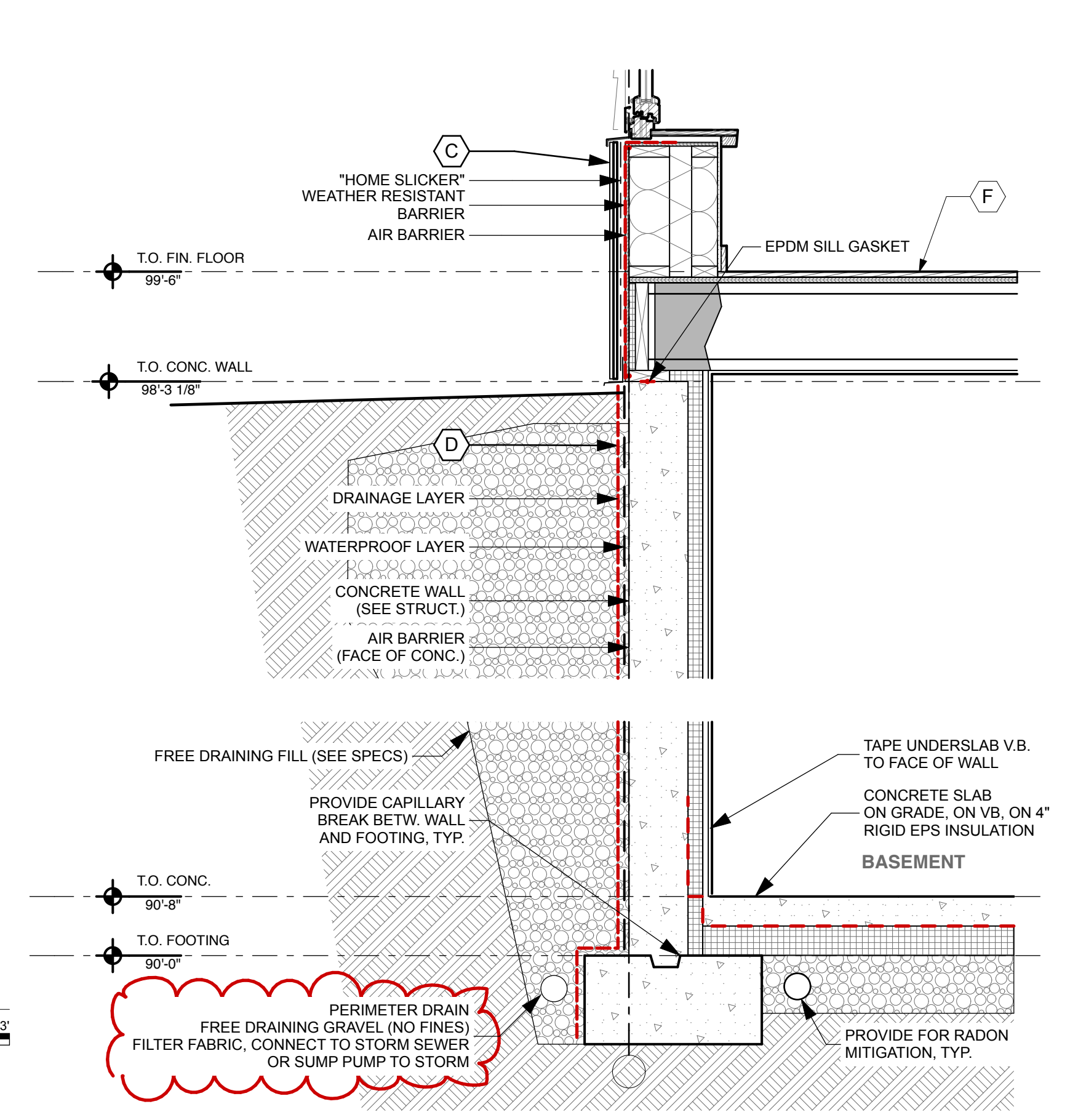
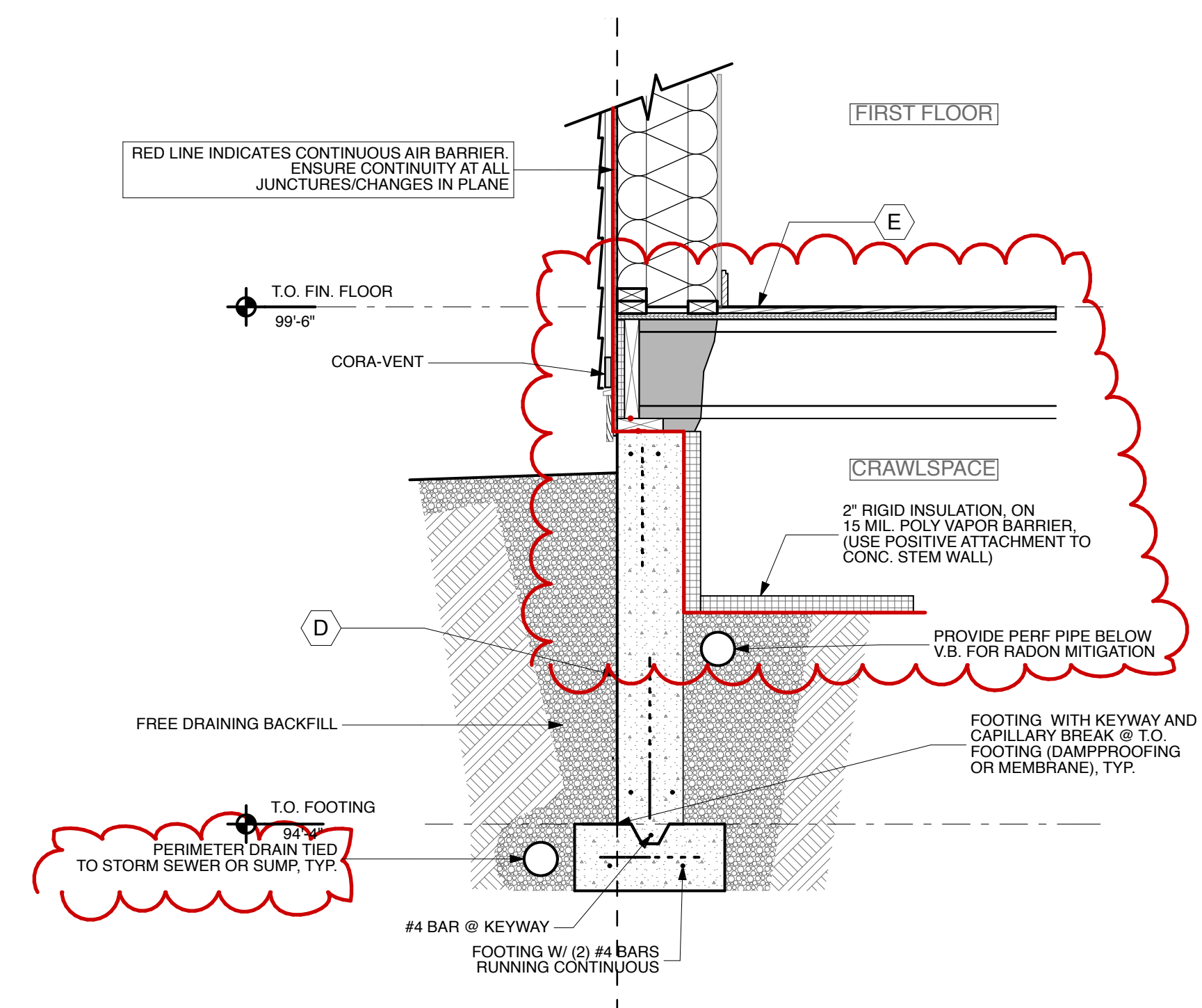


**2 WINDOW DETAILS**  
SCALE: 3/4" = 1'-0"  
0 3" 6" 9"



**1 TYPICAL WALL SECTION**  
SCALE: 3/4" = 1'-0"  
0 1" 2" 3"



**3 BASEMENT WALL SECTION**  
SCALE: 3/4" = 1'-0"  
0 1" 2" 3"

- ASSEMBLY NOTES**
- (A) **PITCHED ROOFS: ~R-52**  
Asphalt Shingle Roof, On Roofing Underlayment, On Plywood Roof Sheathing, On 2x Strapping Run Flat w/ Slope (Roof Ventilation), On "Zip System Roof Sheathing" w/ Taped Seams (Air Barrier), On 2x Rrafters w/ 2x3 Cross Strapping Inside and Full-Depth D.P. Cellulose Insulation (See Struct.), On GWB Ceiling. See Interior Finish Schedule for Finish Materials.
  - (B) **PITCHED ROOF (@ EAVES):**  
Asphalt Shingle Roof, On Roofing Underlayment, On Plywood Roof Sheathing, On 2x Strapping Run Flat w/ Slope, On "Zip System Roof Sheathing" (See Struct.), On Sistered-On 2x Rafter Tails (See Struct.), On Soffit Material.
  - (C) **EXTERIOR WALL: ~R-43**  
Exterior Siding, On Rainscreen (1x3 K.D. strapping or "Home Slicker" - see siding type for extents, incl. black vinyl bug screen), On Weather Resistant Barrier (WRB) On 1/2" "Zip System Wall Sheathing" w/ Taped Seams (Air Barrier), On 12" Double Stud Wall (See Struct.) w/ Full-Depth D.P. Cellulose (R-36), on GWB. See Interior Finish Schedule for Finish Materials.
  - (D) **CONC. FOUND. WALL: ~R-10**  
Free Draining Backfill, On Fluid-Applied Dampproofing, On Reinforced Concrete Wall (See Struct.), On EPS Rigid Insulation at Interior Face (R-10 Min.).
  - (E) **INTERIOR SLAB ON GRADE: ~R-10**  
Fiber-Reinforced 4" Concrete Slab (See Struct.), On 15 Mil. min. Poly Vapor Barrier Taped and Sealed, On 2" Rigid EPS Insulation w/ 2" Perimeter Insulation, On 6" Crushed Gravel Fill (No Fines)
  - (F) **INTERIOR FRAMED FLOORS:**  
Finish Floor Material (See Interior Finish Schedule), On Structural Floor Sheathing (See Struct.), On Floor Joists (See Struct.), On GWB Ceiling. See Interior Finish Schedule For Finish Materials.
  - (G) **CONC. BASEMENT WALL: ~R-18**  
Free Draining Backfill, On Fluid-Applied Dampproofing, On Reinforced Concrete Wall (See Struct.), On 3" Thermax Insulation to Interior
  - (H) **LOW-SLOPE ROOFS: ~R-52**  
Membrane Roof, On Roofing Underlayment, On 4" Polyiso Insulation (R-25 min.), On "Zip System Roof Sheathing" w/ Taped Seams (Air Barrier), On 2x Rrafters w/ 2x3 Cross Strapping Inside and Full-Depth D.P. Cellulose Insulation (See Struct.), On GWB Ceiling. See Interior Finish Schedule for Finish Materials.