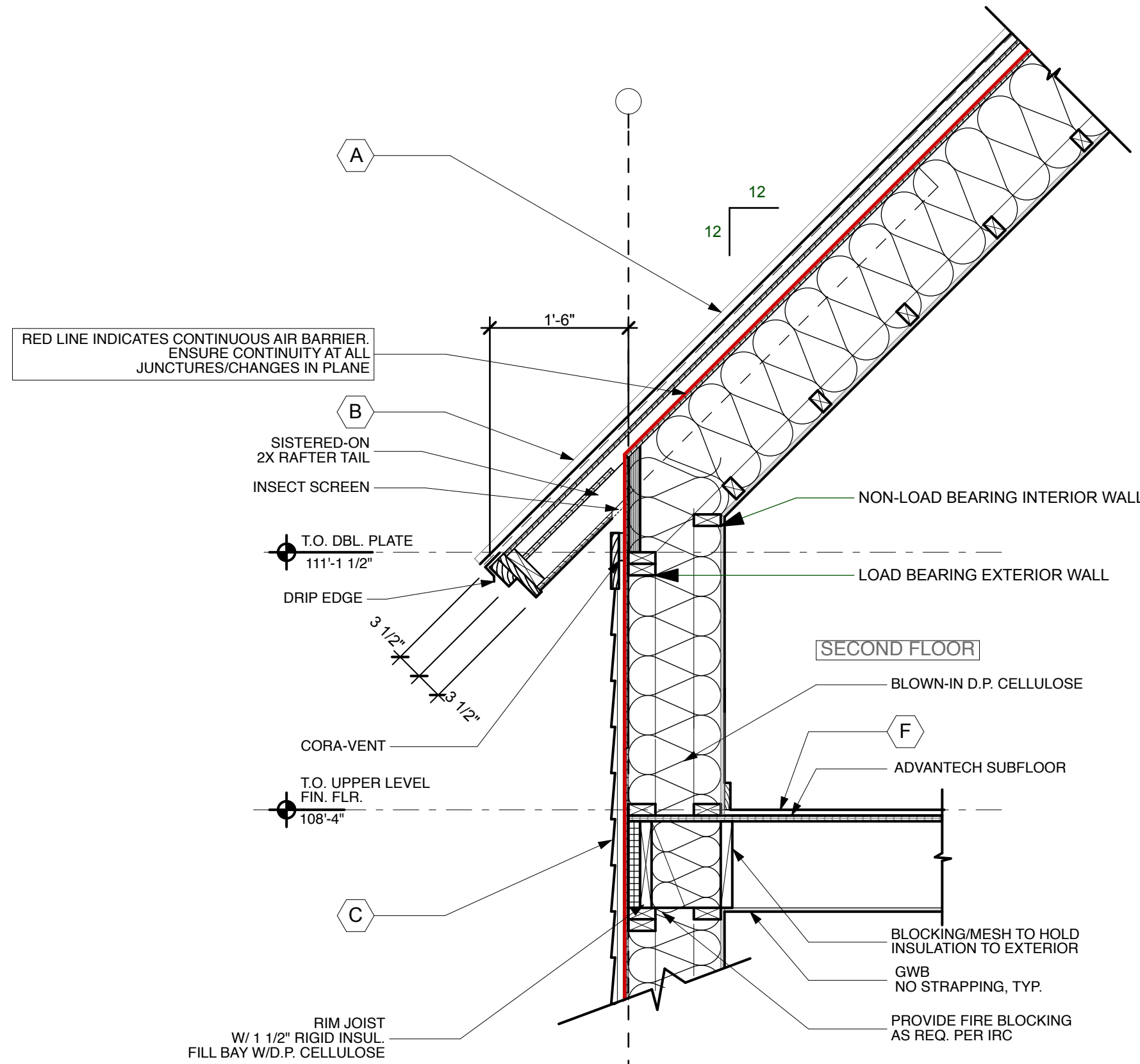
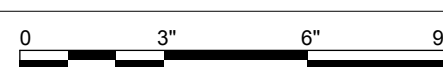
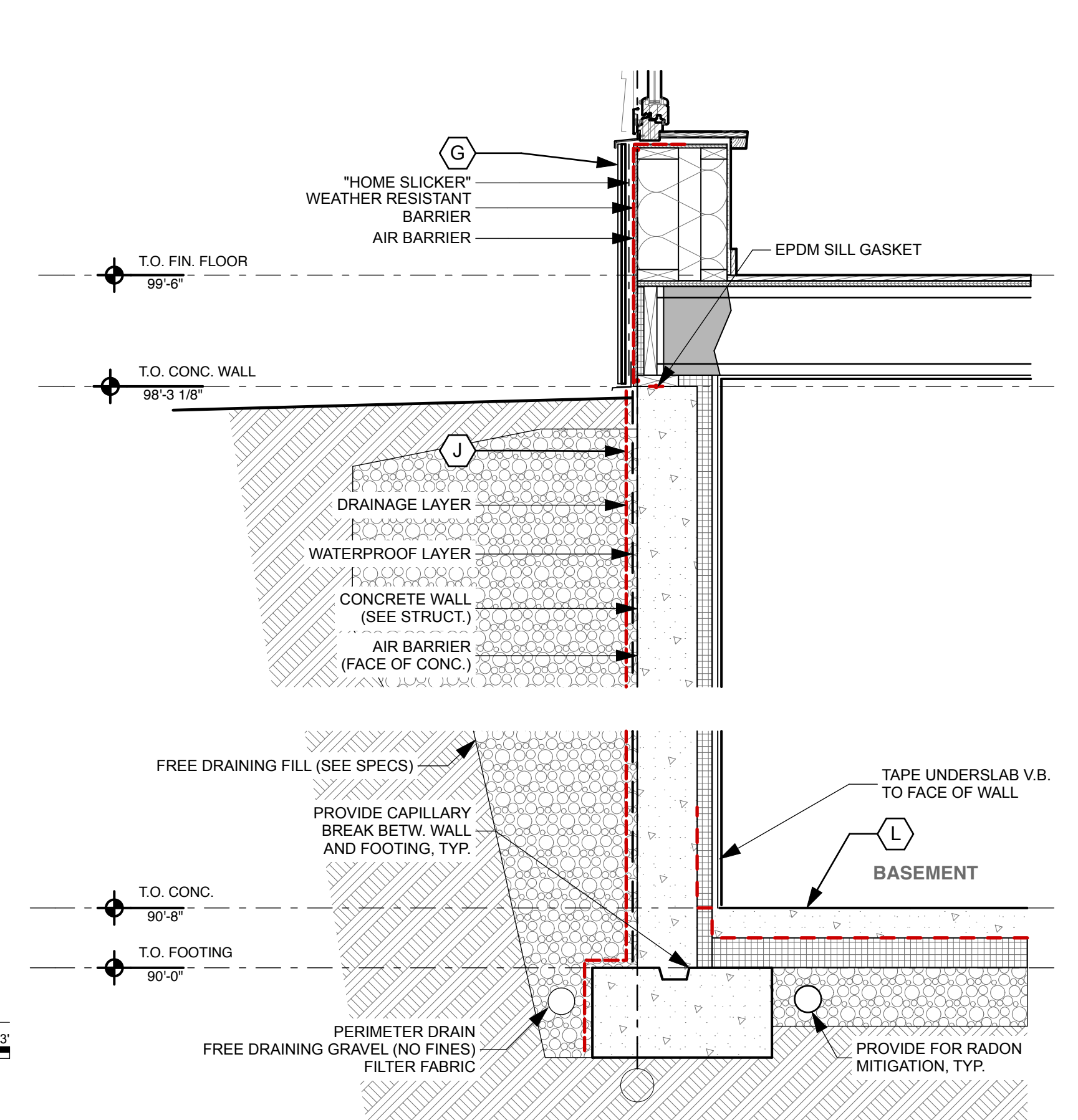
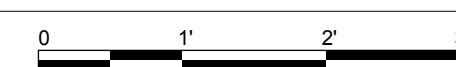


2 WINDOW DETAILS
SCALE: 3/4" = 1'-0"



1 TYPICAL WALL SECTION
SCALE: 3/4" = 1'-0"



3 BASEMENT WALL SECTION
SCALE: 3/4" = 1'-0"



ASSEMBLY NOTES

- (A) **PITCHED ROOFS: ~R-52**
Asphalt Shingle Roof, On Roofing Underlayment, On Plywood Roof Sheathing, On 2x Strapping Run Flat w/ Slope (Roof Ventilation), On "Zip System Roof Sheathing" w/ Taped Seams (Air Barrier), On 2x Rafter w/ 2x3 Cross Strapping Inside and Full-Depth D.P. Cellulose Insulation (See Struct.), On GWB Ceiling. See Interior Finish Schedule for Finish Materials.
- (B) **PITCHED ROOF (@ EAVES):**
Asphalt Shingle Roof, On Roofing Underlayment, On Plywood Roof Sheathing, On 2x Strapping Run Flat w/ Slope, On "Zip System Roof Sheathing" (See Struct.), On Sistered-On 2x Rafter Tails (See Struct.), On Soffit Material.
- (C) **EXTERIOR WALL: ~R-43**
Exterior Siding, On Rainscreen (1x3 K.D. strapping or "Home Slicker" - see siding type for extents, incl. black vinyl bug screen), On Weather Resistant Barrier (WRB) On 1/2" Zip System Wall Sheathing w/ Taped Seams (Air Barrier), On 12" Double Stud Wall (See Struct.) w/ Full-Depth D.P. Cellulose (R-36), on GWB. See Interior Finish Schedule for Finish Materials.
- (D) **CONC. FOUND. WALL:**
Free Draining Backfill, On Fluid-Applied Damproofing, On Reinforced Concrete Wall (See Struct.)
- (E) **INTERIOR SLAB ON GRADE: ~R-26**
Finished Hardwood Floor, On Fiber-Reinforced 4" Concrete Slab (See Struct.), On 15 Mil. min. Poly Vapor Barrier Taped and Sealed, On 6" Rigid EPS Insulation w/ 2" Perimeter Insulation, On 6" Crushed Gravel Fill (No Fines)
- (F) **INTERIOR FRAMED FLOORS:**
Finish Floor Material (See Interior Finish Schedule), On Structural Floor Sheathing (See Struct.), On Floor Joists (See Struct.), On GWB Ceiling. See Interior Finish Schedule For Finish Materials.
- (G) **CONC. BASEMENT WALL: ~R-18 - 20**
Free Draining Backfill, On Fluid-Applied Damproofing, On Reinforced Concrete Wall (See Struct.), On 3" Thermax Insulation to Interior (~R-18) (Alt.: On 2" EPS, On 2x Wall Framing w/ D.P. Cellulose Insulation (~R-20)).
- (H) **LOW-SLOPE ROOFS: ~R-52**
Membrane Roof, On Roofing Underlayment, On 4" Polyiso Insulation (R-25 min.), On "Zip System Roof Sheathing" w/ Taped Seams (Air Barrier), On 2x Rafter w/ 2x3 Cross Strapping Inside and Full-Depth D.P. Cellulose Insulation (See Struct.), On GWB Ceiling. See Interior Finish Schedule for Finish Materials.