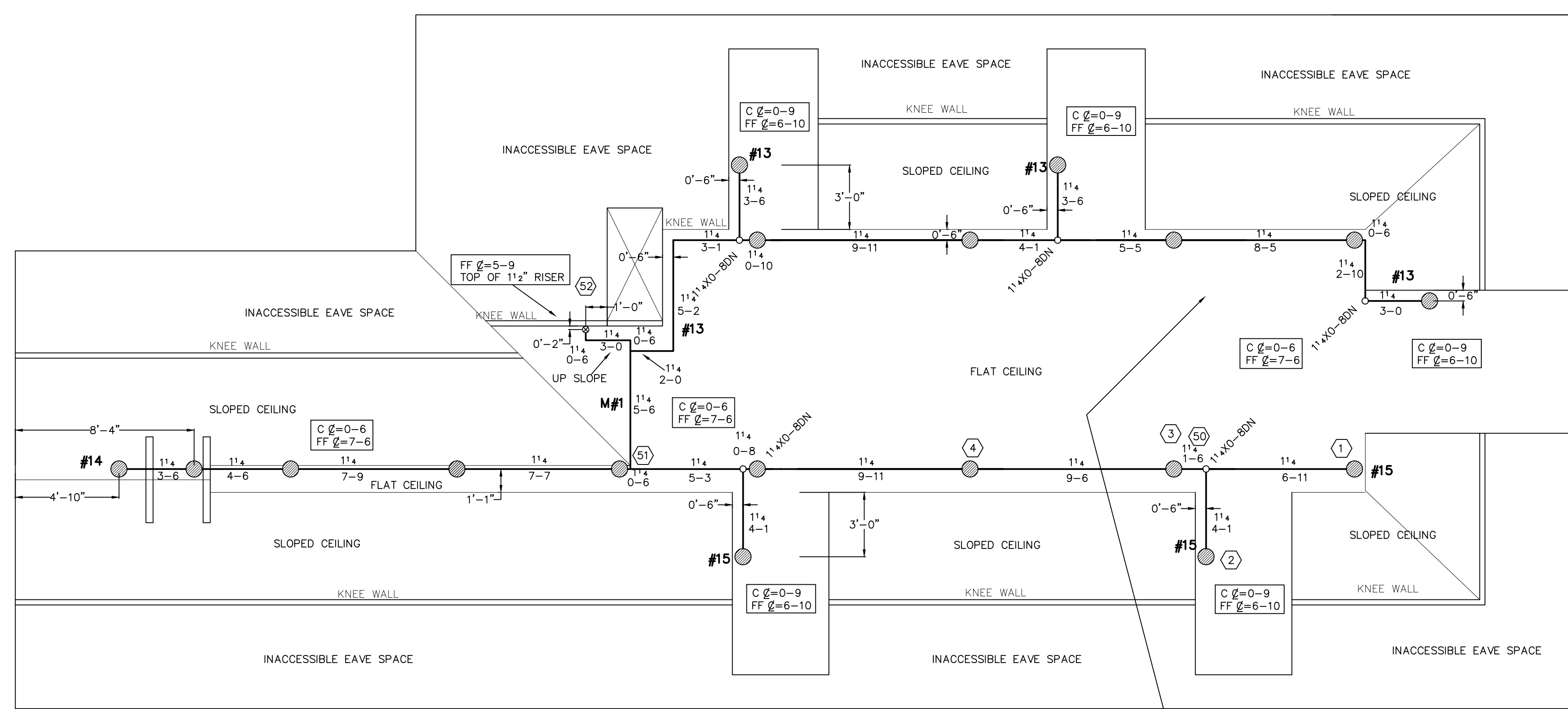
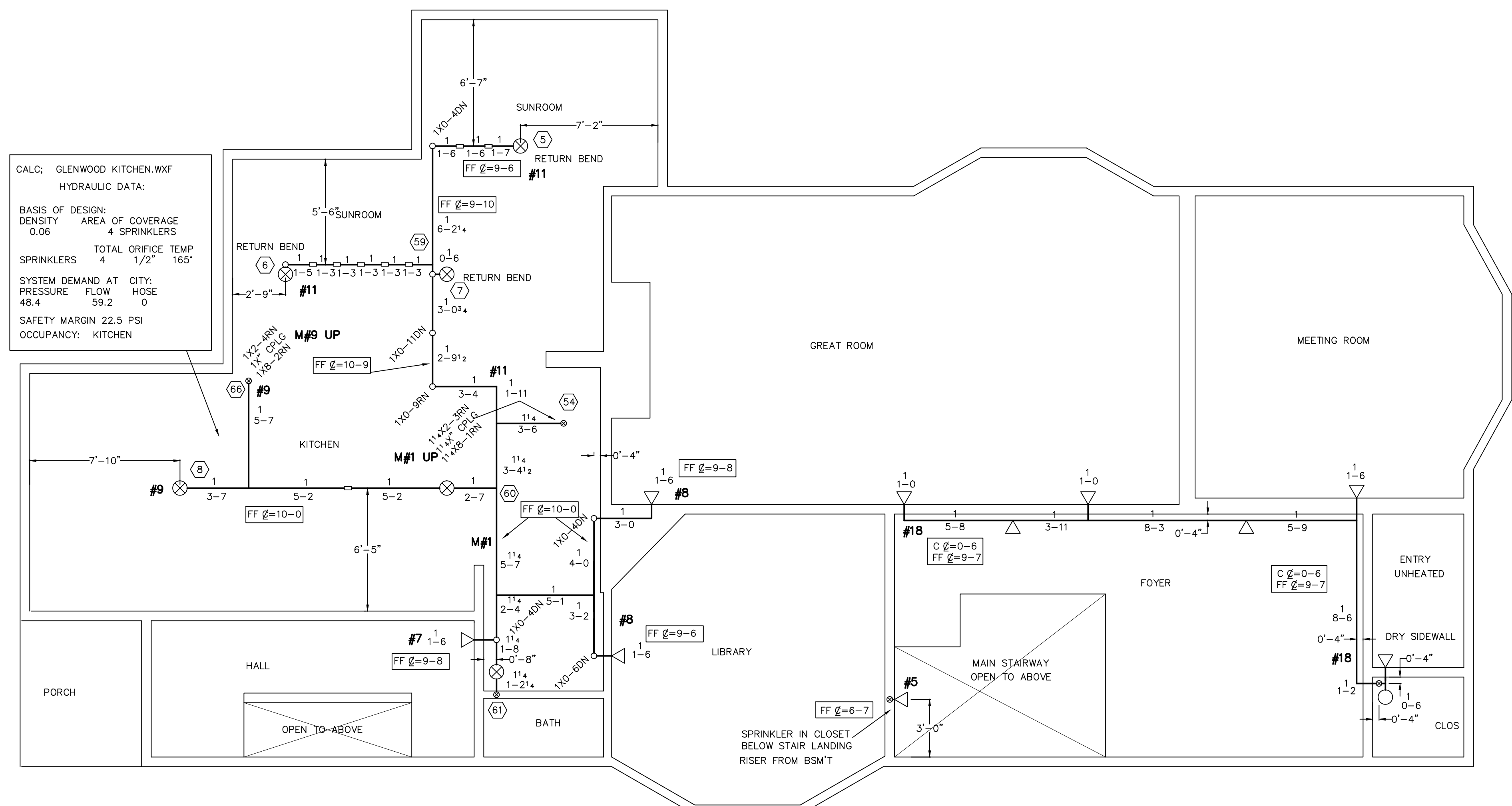


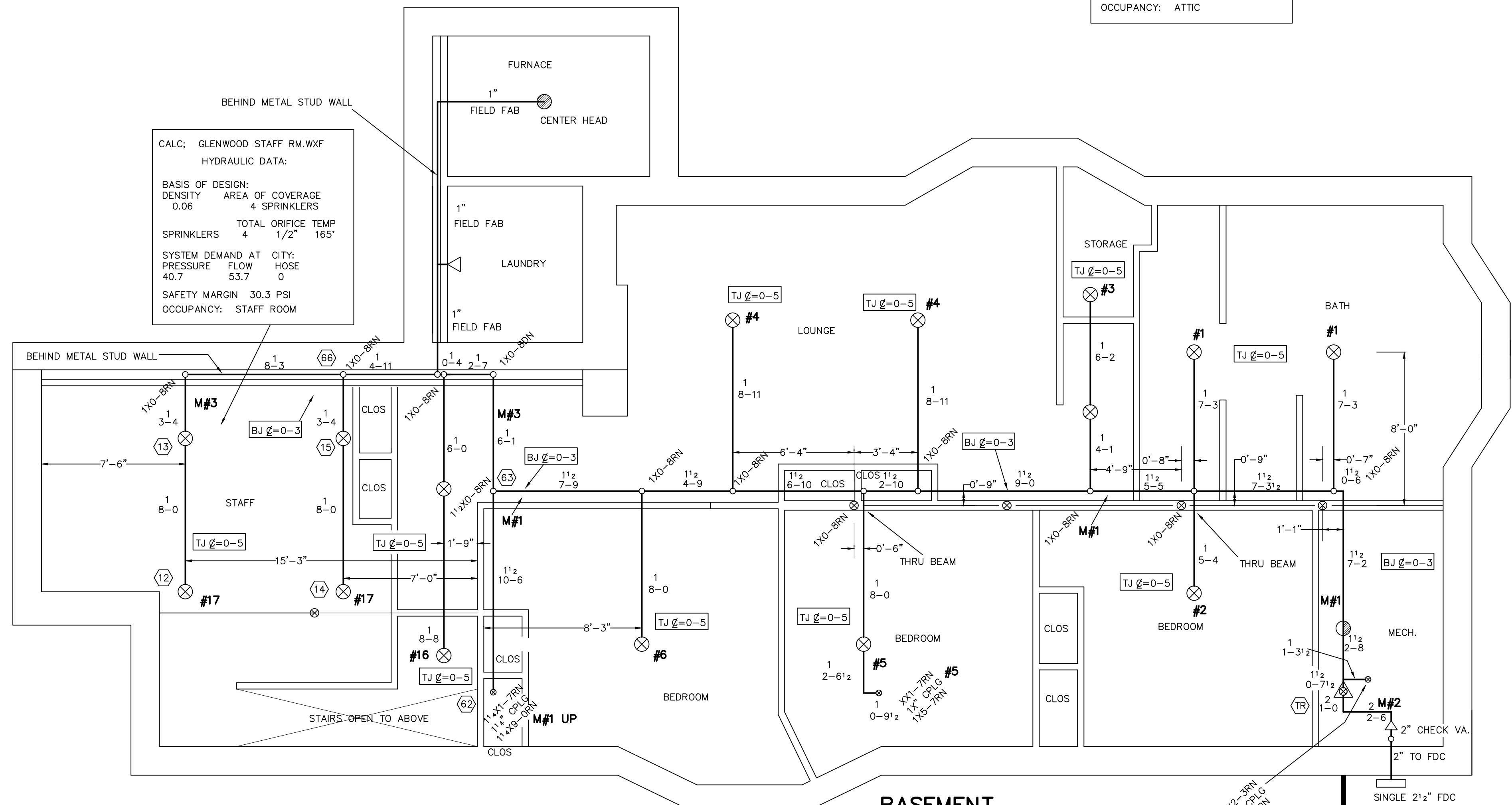
SECOND FLOOR



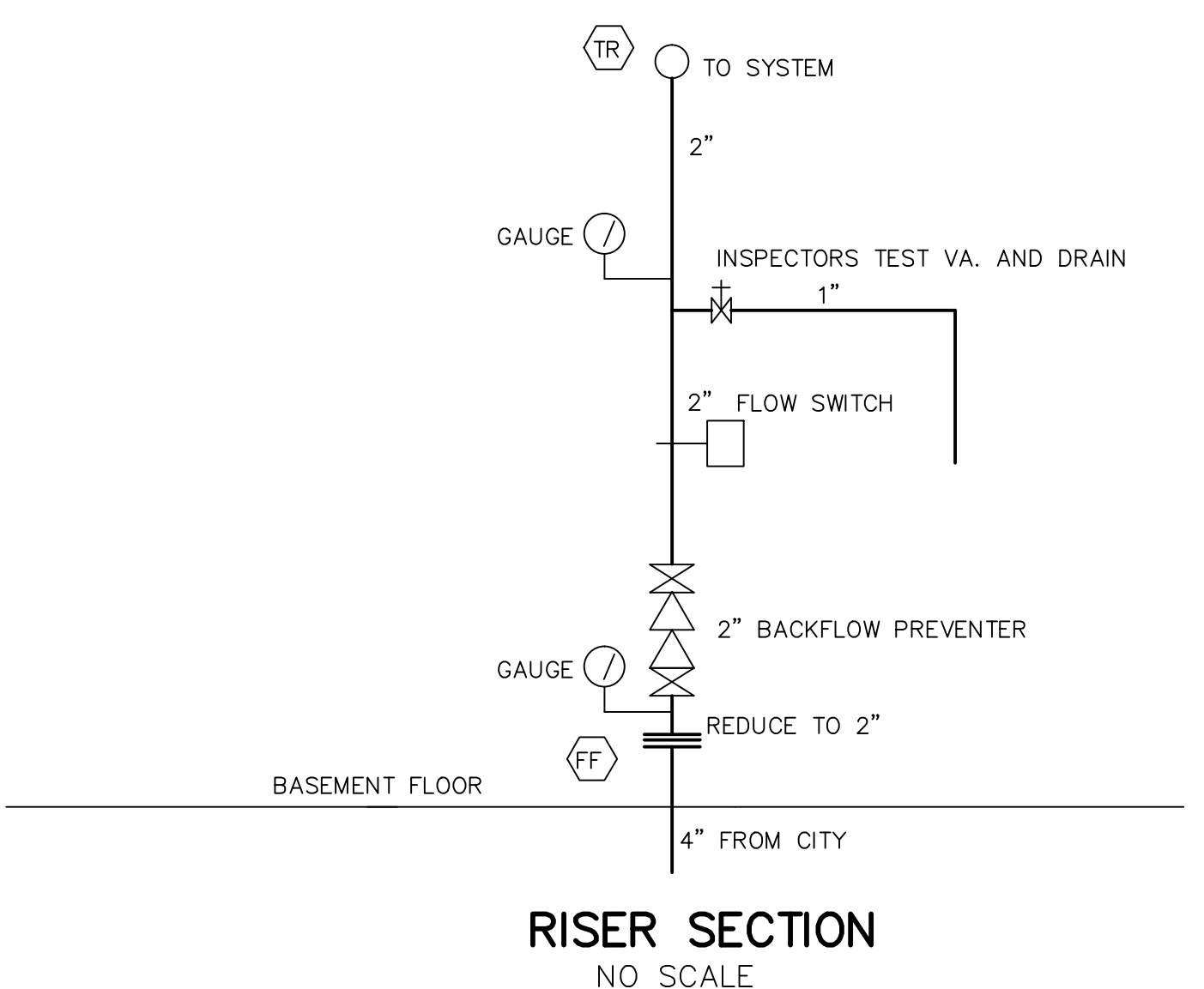
ATTIC



FIRST FLOOR



BASEMENT



RISER SECTION  
NO SCALE

**SYSTEM CLASSIFICATION**

A WET PIPE NFPA #13R  
SPRINKLER SYSTEM TO BE INSTALLED IN ALL  
AREAS OF THE RESIDENCE TO MEET NFPA,  
STATE, AND CITY OF PORTLAND CODES.

- 21 RELIABLE RFC43  
CONCEALED PENDENT  
1/2"x1/2" K=4.3
- 19 RELIABLE F1FR56  
Q R BRASS UPRIGHT  
1/2"x1/2" K=5.6
- 1 RELIABLE F1FR56  
Q R BRASS PENDENT  
1/2"x1/2" K=5.6
- 3 RELIABLE F1FR56  
Q R BRASS UPRIGHT  
1/2"x1/2" K=5.6
- 28 RELIABLE F1FR544  
HORIZONTAL SIDEWALL  
1/2"x1/2" K=4.4

**LEGEND**

- 155 \* BRASS PENDENT
- 155 \* BRASS UPRIGHT
- 200 \* BRASS UPRIGHT
- ▽ 165" CONCEALED WHITE RES. PENDENT
- 155 \* RECESSED WHITE RES. SIDEWALL
- RISE OR DROP
- RISER BETWEEN FLOOR
- ⊗ SCREWED COUPLING
- ⊗ HYDRAULIC REFERENCE POINT
- FF g=XX FINISH FLOOR TO CENTERLINE OF PIPE
- C g=XX CEILING TO CENTERLINE OF PIPE
- BJ g=XX BOTTOM OF JOIST TO CENTERLINE OF PIPE
- TJ g=XX TOP OF JOIST TO CENTERLINE OF PIPE

**GENERAL NOTES**

BUYER/OWNER TO MAINTAIN A TEMPERATURE OF ABOVE 40F,  
INCLUDING AREAS PROPERLY INSULATED TO MAINTAIN 40F,  
TO PREVENT THE SPRINKLER SYSTEM FROM FREEZING.  
ALL DIMENSIONS ARE CENTER TO CENTER U/N  
ALL PIPE TO SCH 40 BLACK STEEL  
ALL SCREWED FITTINGS TO BE STD. WT. C.I. BLACK U/N  
ALL DIMENSIONS FROM FACE OF STUDS OR PLASTER

**DEAN & ALLYN, INC.**  
FIRE PROTECTION - SPECIAL HAZARD  
PO BOX 709, GRAY, MAINE 04039  
(207)657-5646 FAX:(207)657-5647

DANA A. STEWART NICET IV - #064544	
APPROVED BY	DATE
SURVEYED BY HAK B-10-13	
DRAWN BY HAK B-15-13	
CHECKED BY	
AT DEAN & ALLYN, INC	
SCALE 1/4"=1'-0" U/N	
SHEET NO. 1 OF 1	

**PLYMOUTH HOUSE**  
145 GLENWOOD AVENUE  
PORTLAND MAINE

REV. 1
NO. OF SPRINKLERS 72
CONTRACT NO. C131155