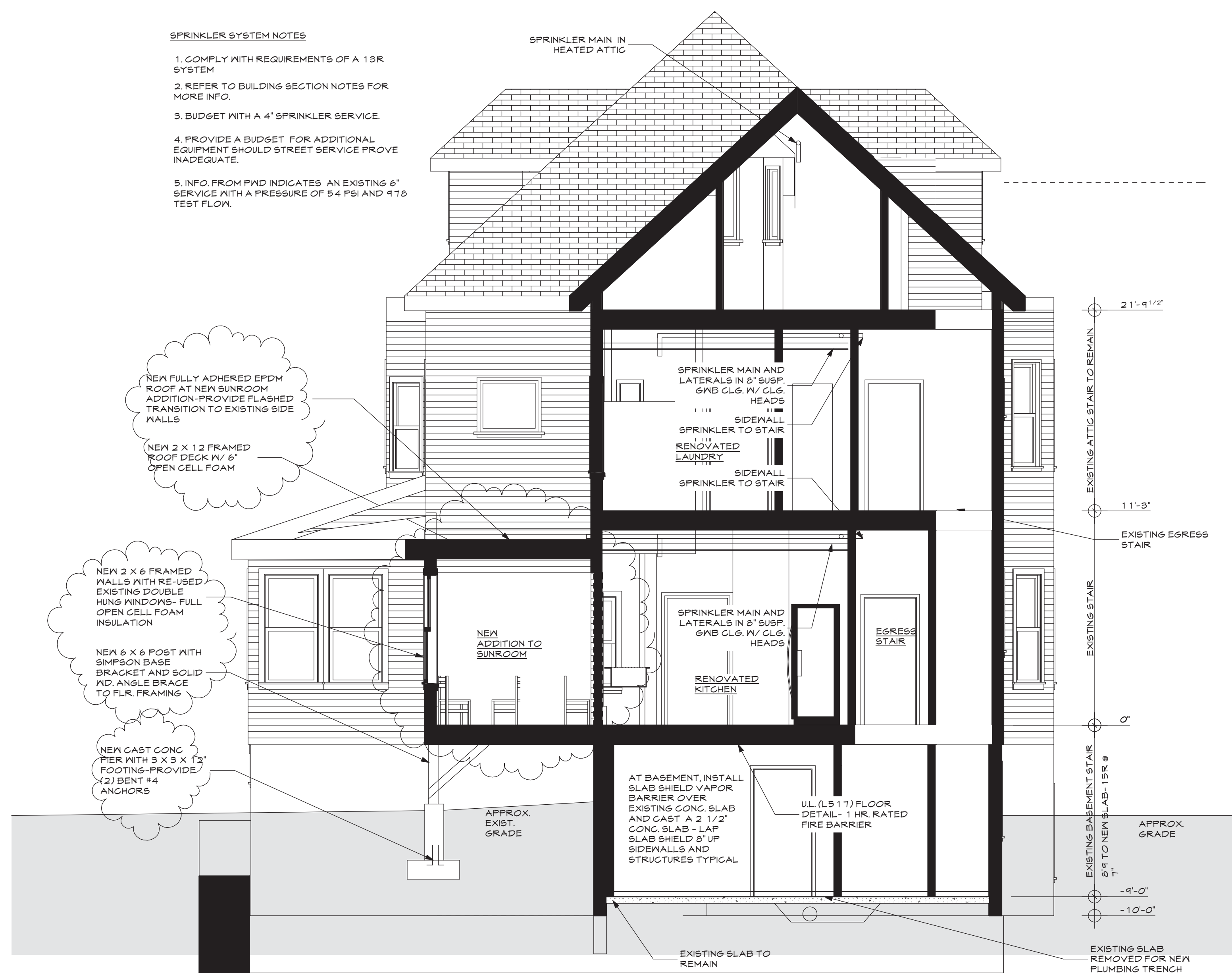
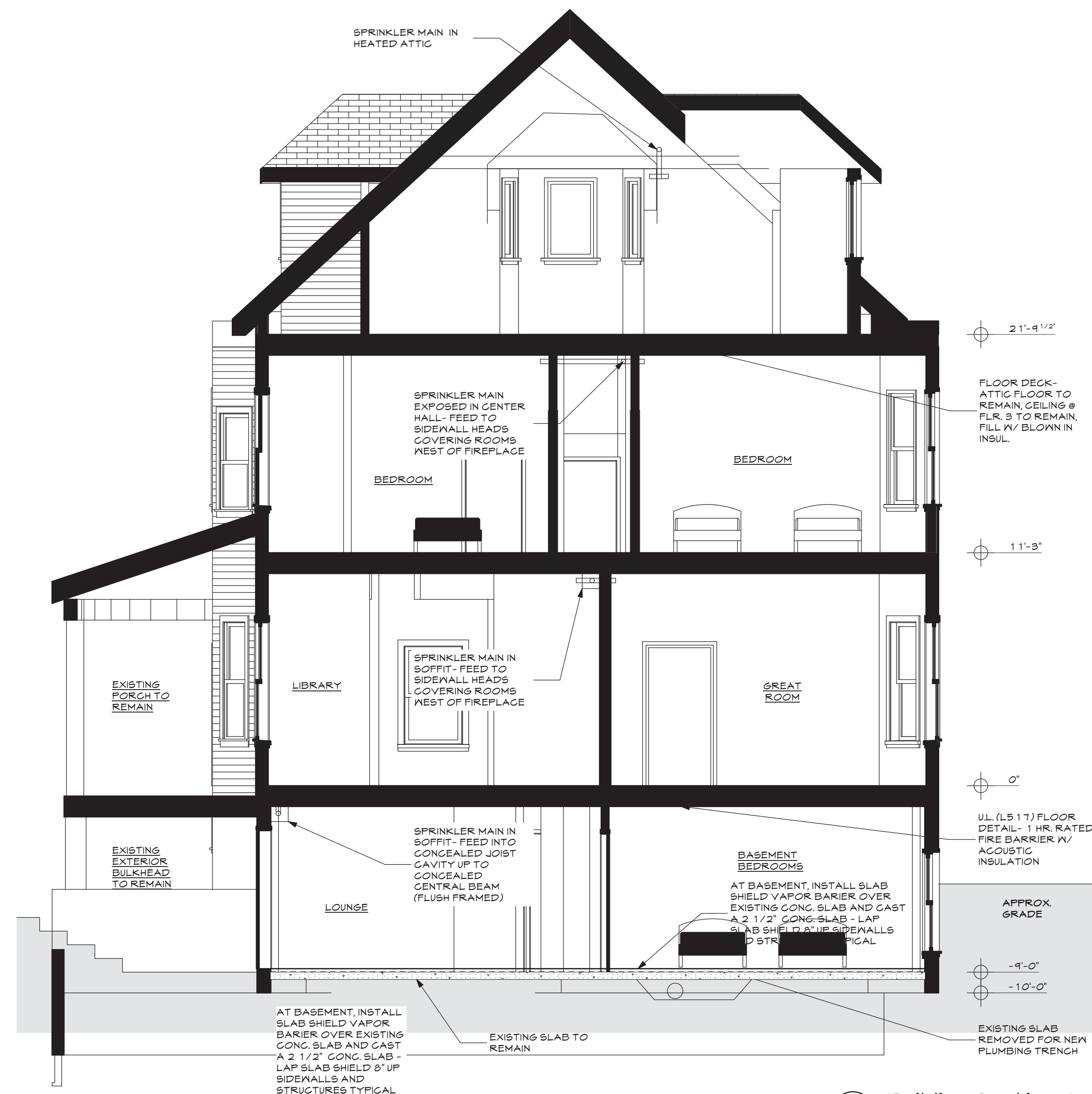


SPRINKLER SYSTEM NOTES

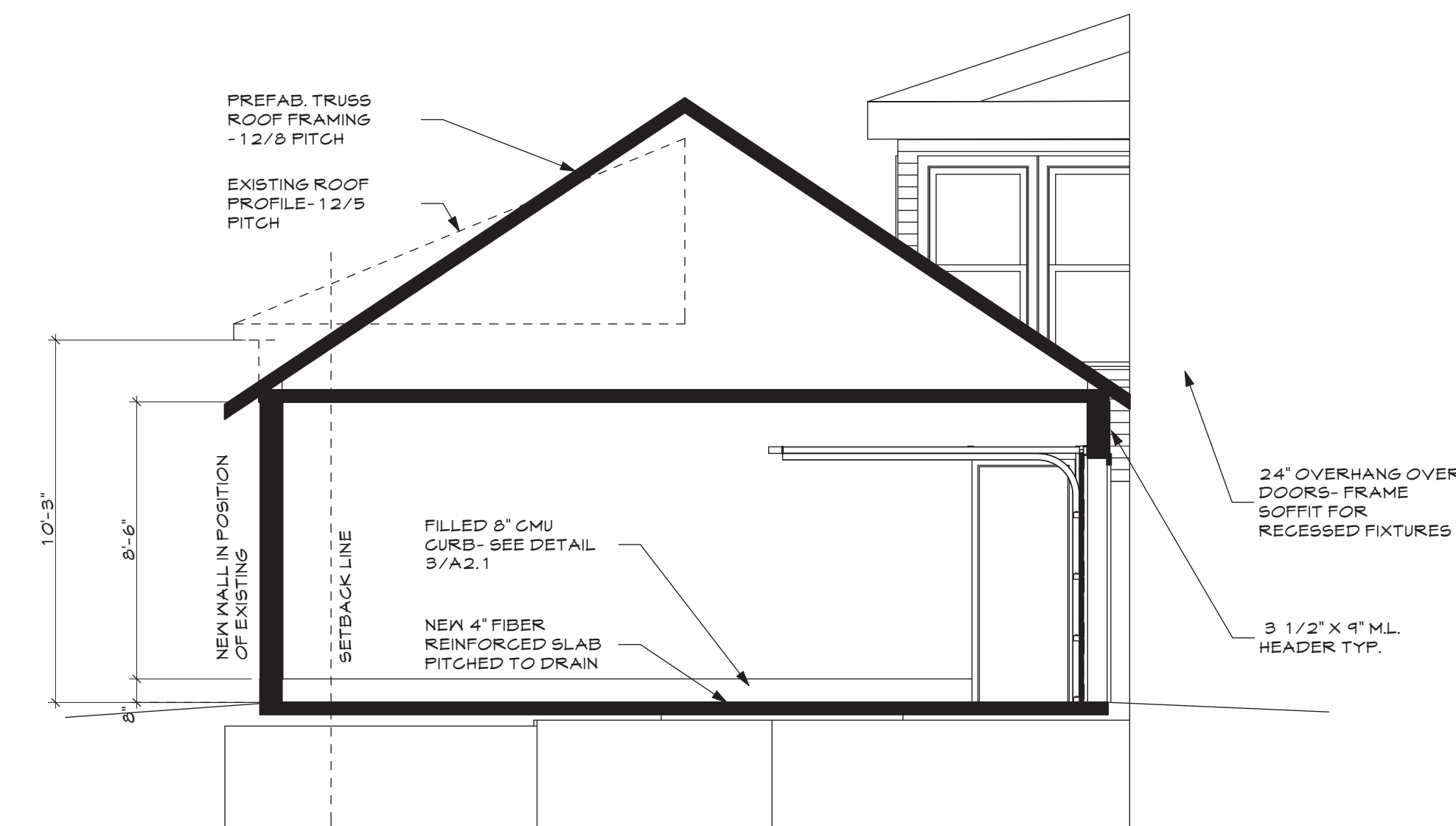
1. COMPLY WITH REQUIREMENTS OF A 1BR SYSTEM
2. REFER TO BUILDING SECTION NOTES FOR MORE INFO.
3. BUDGET WITH A 4" SPRINKLER SERVICE.
4. PROVIDE A BUDGET FOR ADDITIONAL EQUIPMENT SHOULD STREET SERVICE PROVE INADEQUATE.
5. INFO. FROM PWD INDICATES AN EXISTING 6" SERVICE WITH A PRESSURE OF 54 PSI AND 978 TEST FLOW.



2 Building Section B
SCALE: 1/4" = 1'-0"



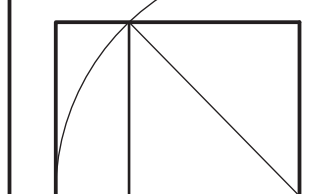
1 Building Section A
SCALE: 1/4" = 1'-0"



3 Building Section C
SCALE: 1/4" = 1'-0"



WHIPPLE - CALLENDER ARCHITECTS



136 PLEASANT AVE.
PORTLAND, ME 04103
P 207.115.2616
F 207.115.5631
www.whipplecallender.com

DESCRIPTION

DATE

MARK

DATE: 3.7.13-REV. PERMIT

CHECKED BY: JAD

DRAWN BY: JAD

JOB: 01-2013

SHEET TITLE: BLDG. SECTIONS