

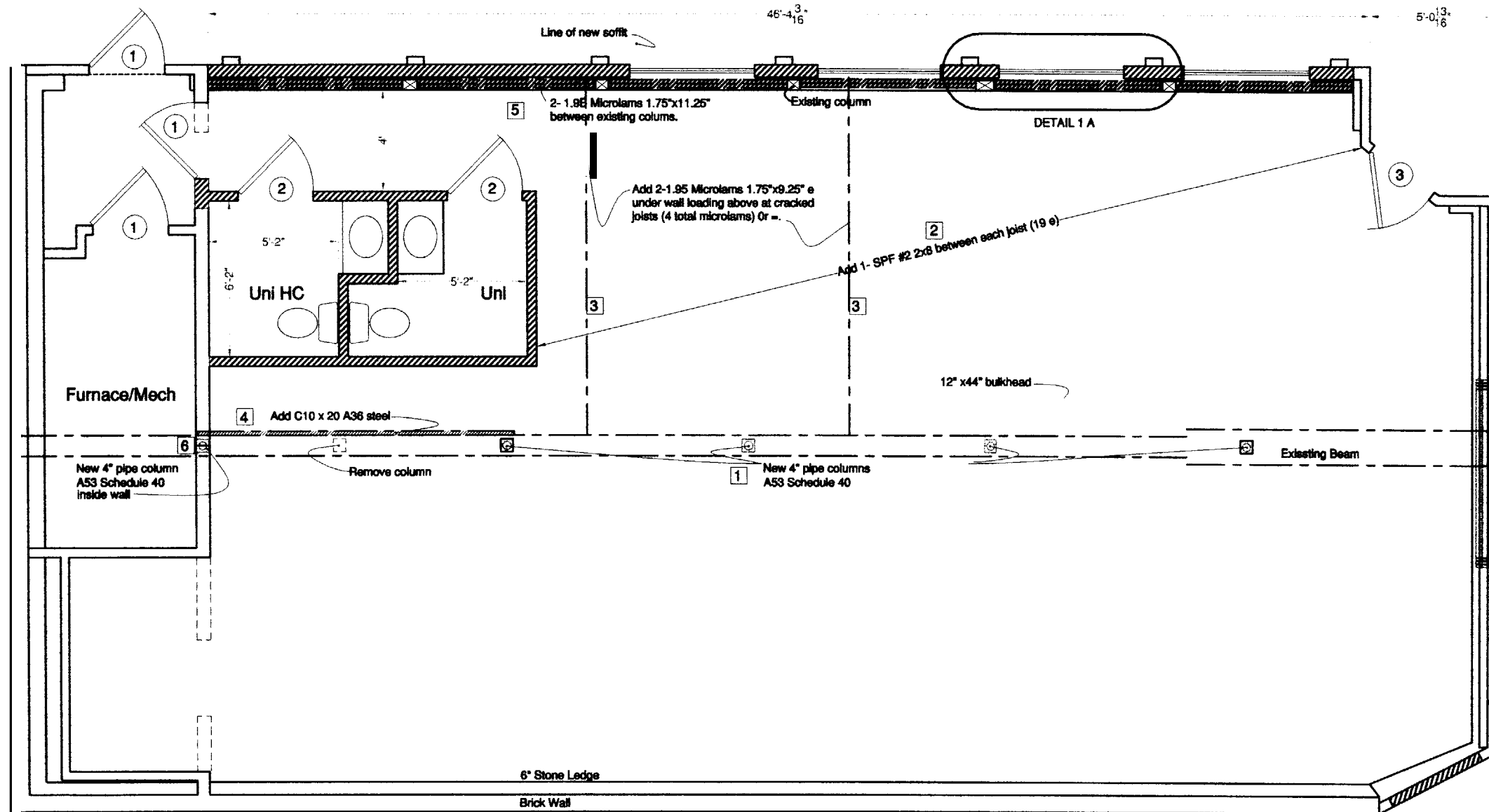
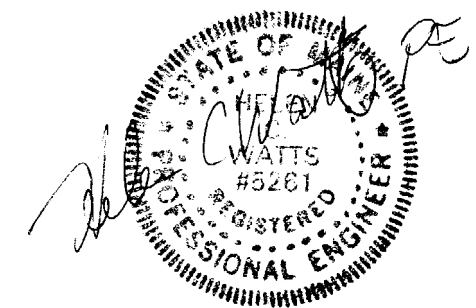
STRUCTURAL NOTES:

- A53 sched 40 4" dia pipe (5 ea)
Base plates: 8"x8" 1/2" pl
Top plates: 8"x10" 1/2" pl
Tack weld to column
Fix plates to concrete w 2-Hiltibolts ea (or =)
Fix plates to wood w 4- wood screws ea
Note: Columns under C10x20 shall receive 10"x10"x1/2" top plates (2 total)

- Add 1-SPF #2 2x8 between ea joist (ea)
- 3 At each cracked joist ad 2-1.9E microlams 1.75"x9.25" ea.

4 Add 1-C10x20 A36 (or A80). 1/2" thru bob staggered:
 Full Length
 A50
 6" - 1/2"

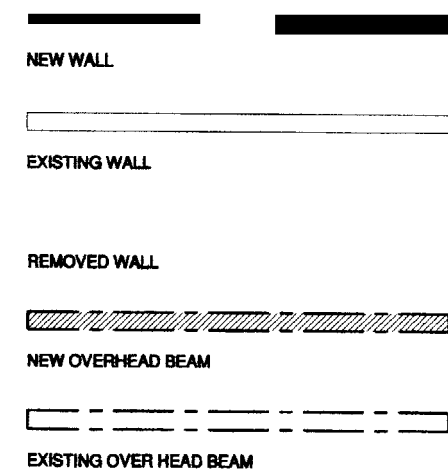
- New beams: 2- 1.9E Microlam 1.75"x11.25"
- Restore/repair fire rating 1 hr holes around pipe/wire to be sealed. Entire restaurant ceiling needs 1 hr rating.



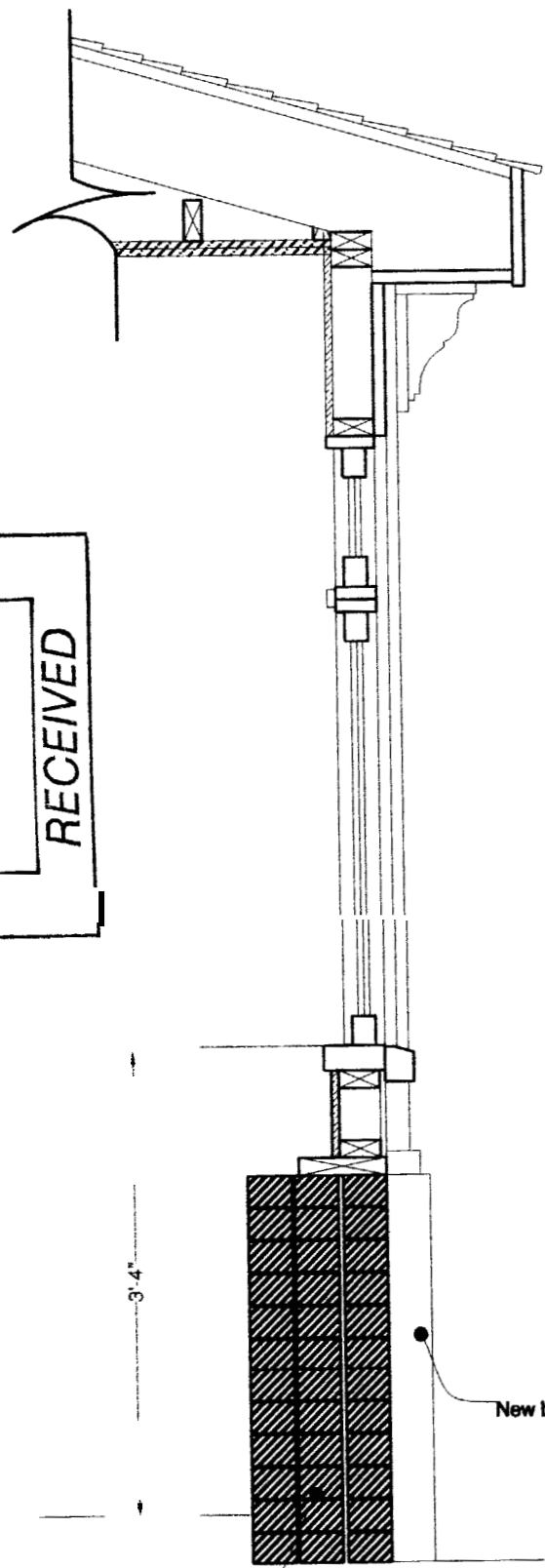
DOOR SCHEDULE

KEY	QUANTITY	TYPE	SIZE
1	3	Existing	Existing
2	2	6 panel Wd	3'-0" x 6'-8" x 1-3/8"
3	1	Full lite Wd	3'-0" x 6'-8" x 1-3/4"

LEGEND



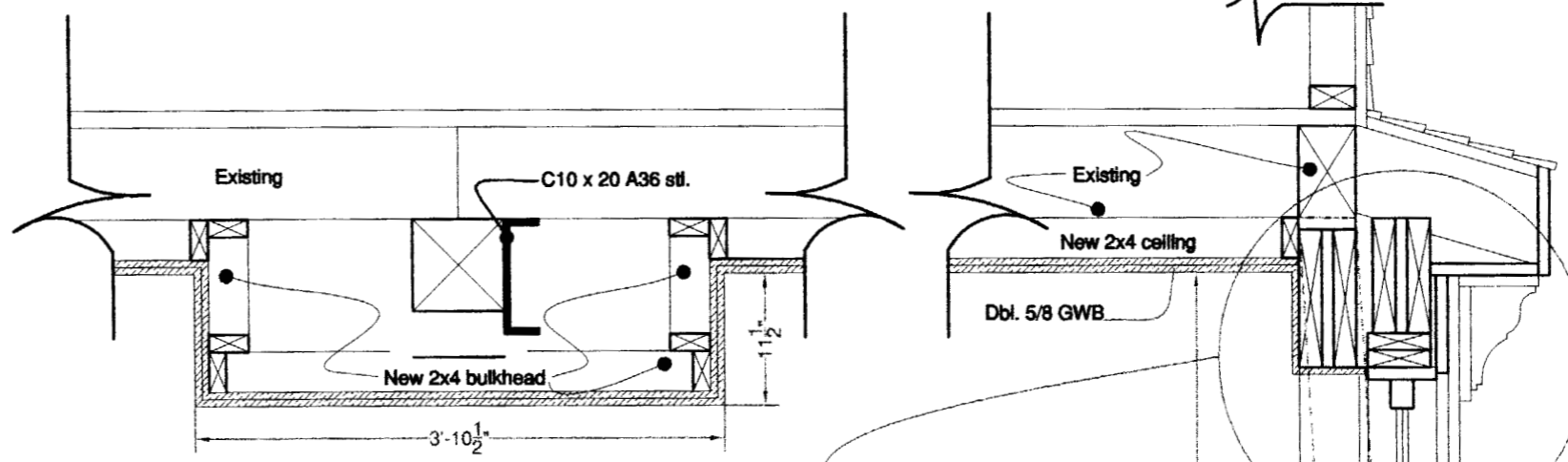
DEPT. OF BUILDING INSPECTION
CITY OF PORTLAND, ME
APR 19 2005
RECEIVED



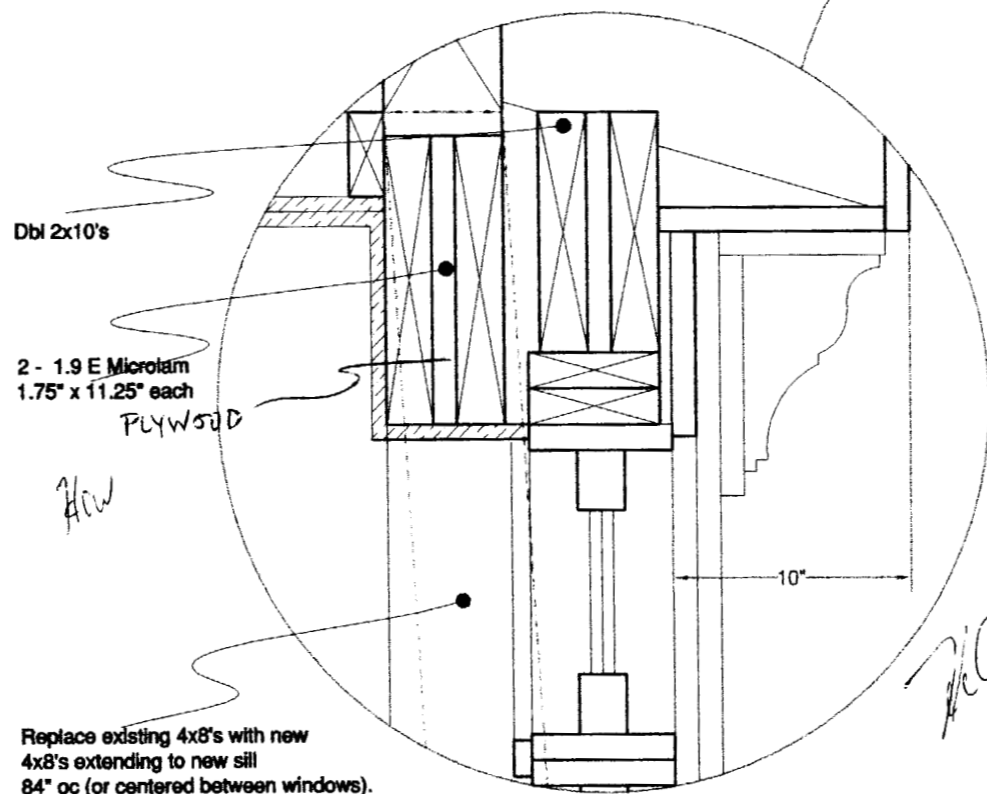
Existing 12" 8/8"

SECTION C-C

New brick pilaster



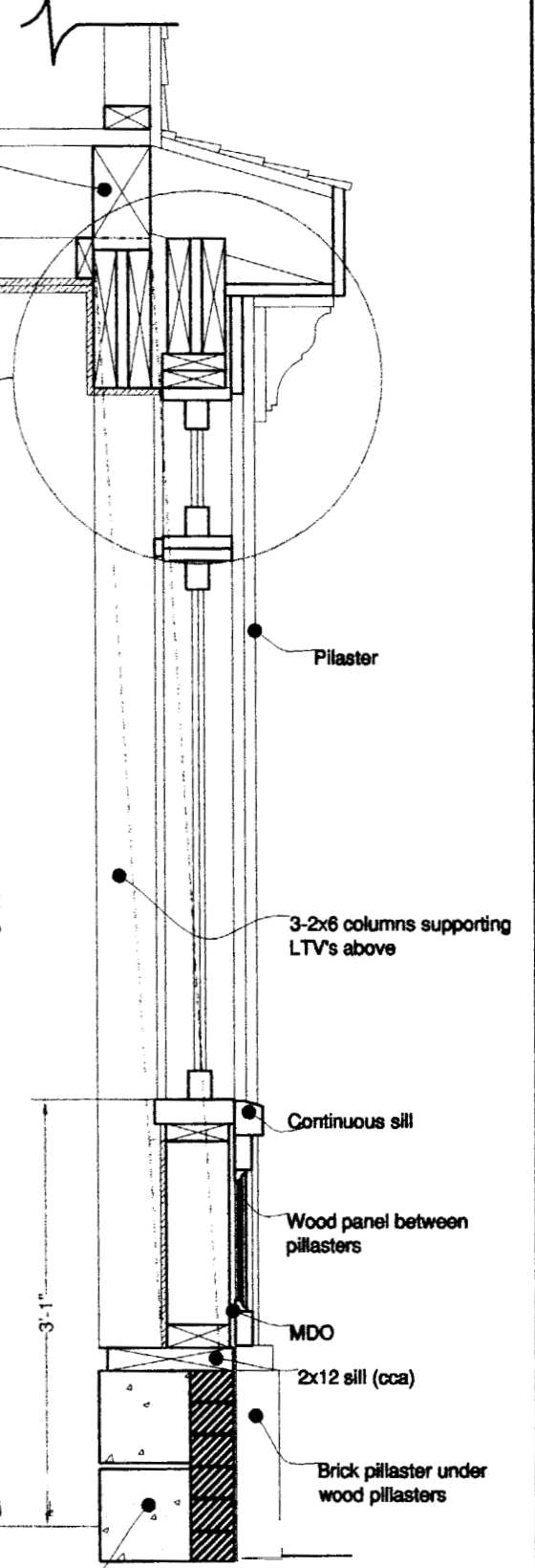
CEILING BULKHEAD



Replace existing 4x8's with new 4x8's extending to new sill 84" oc (or centered between windows).

Scale: 1-1/2" = 1'-0"

Handwritten signature: J. C. Watson PE.



New 8" CMU wall

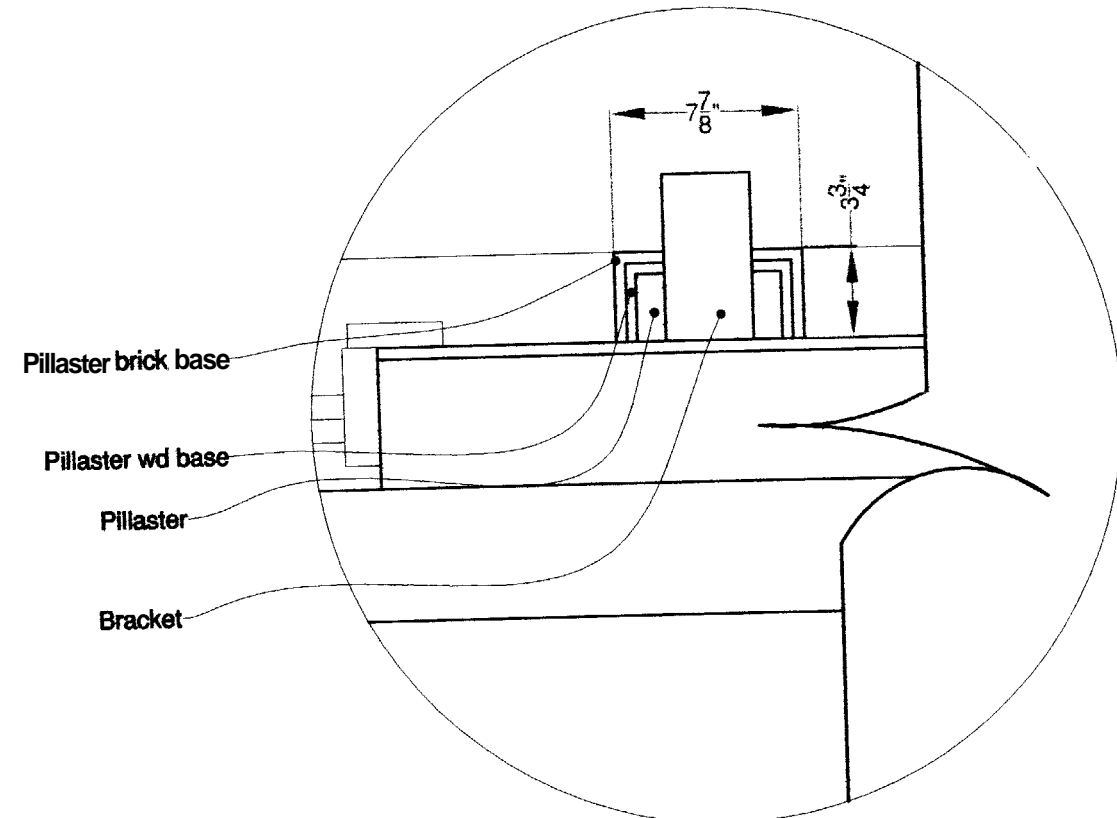
CMU filled

SECTION A-A

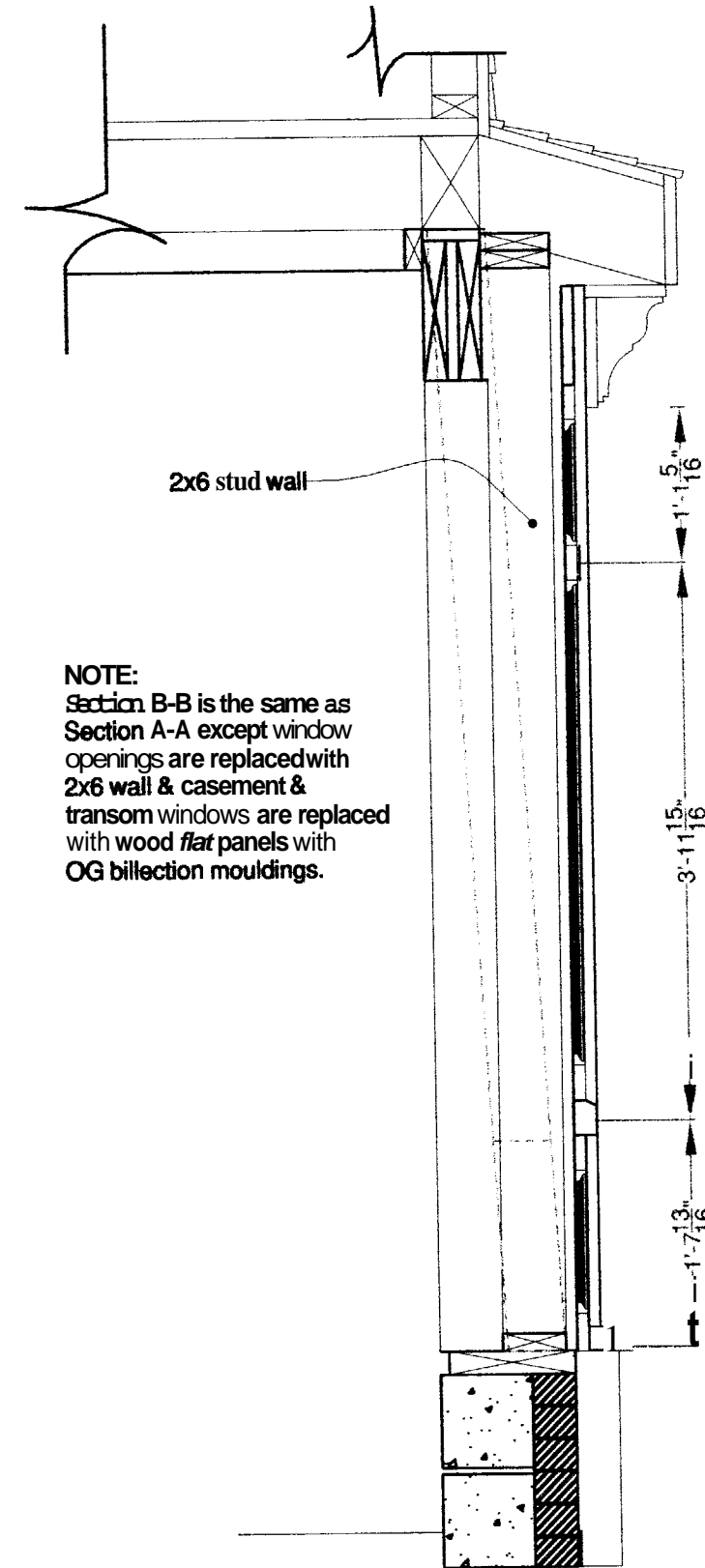
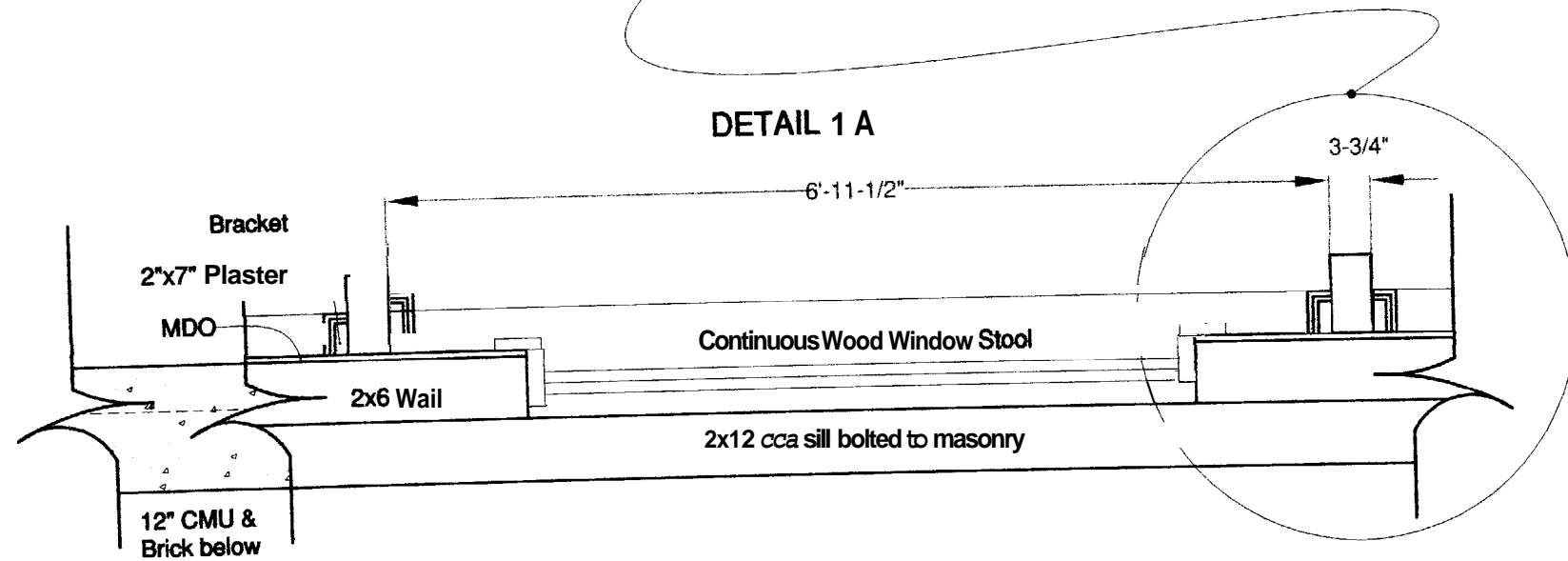
Date: 4/15/2005

Scale: 3/4" = 1'-0"

SCALE: 1-1/2" = 1'-0"



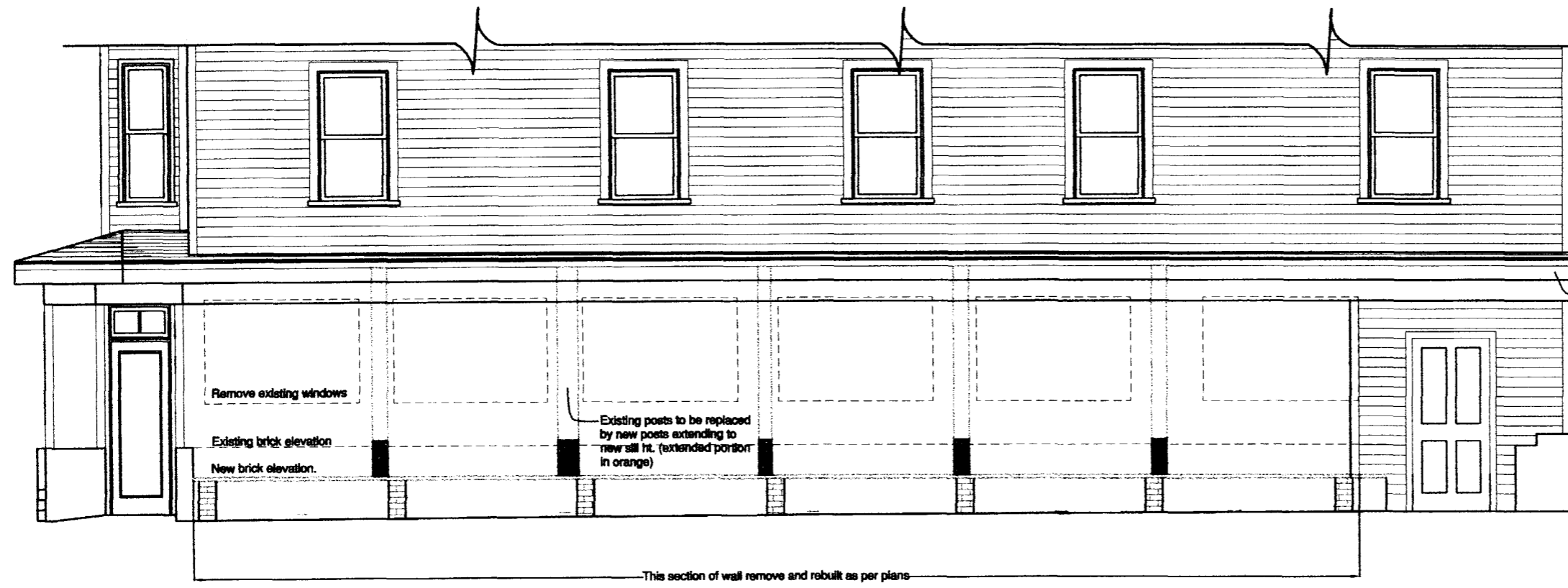
DETAIL 1 A



NOTE:
 Section B-B is the same as Section A-A except window openings are replaced with 2x6 wall & casement & transom windows are replaced with wood flat panels with OG billection mouldings.

SECTION B-B

DEPT. OF BUILDING INSPECTION
 CITY OF PORTLAND, ME
 APR 19 2005
 RECEIVED



2nd floor remains as is.

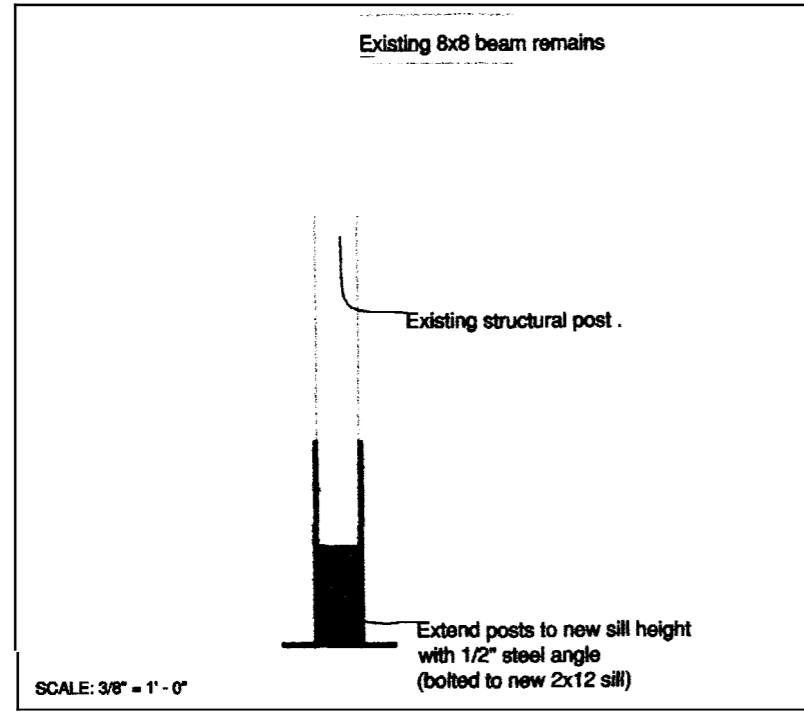
Remove existing 14" eave & shingles. Replace with 12" eave.

Remove existing windows

Existing brick elevation
New brick elevation.

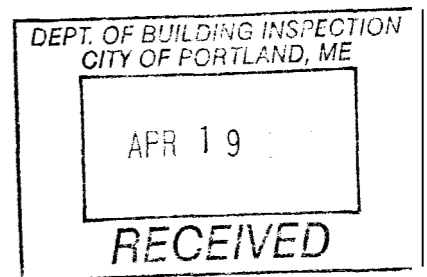
Existing posts to be replaced by new posts extending to new sill ht. (extended portion in orange)

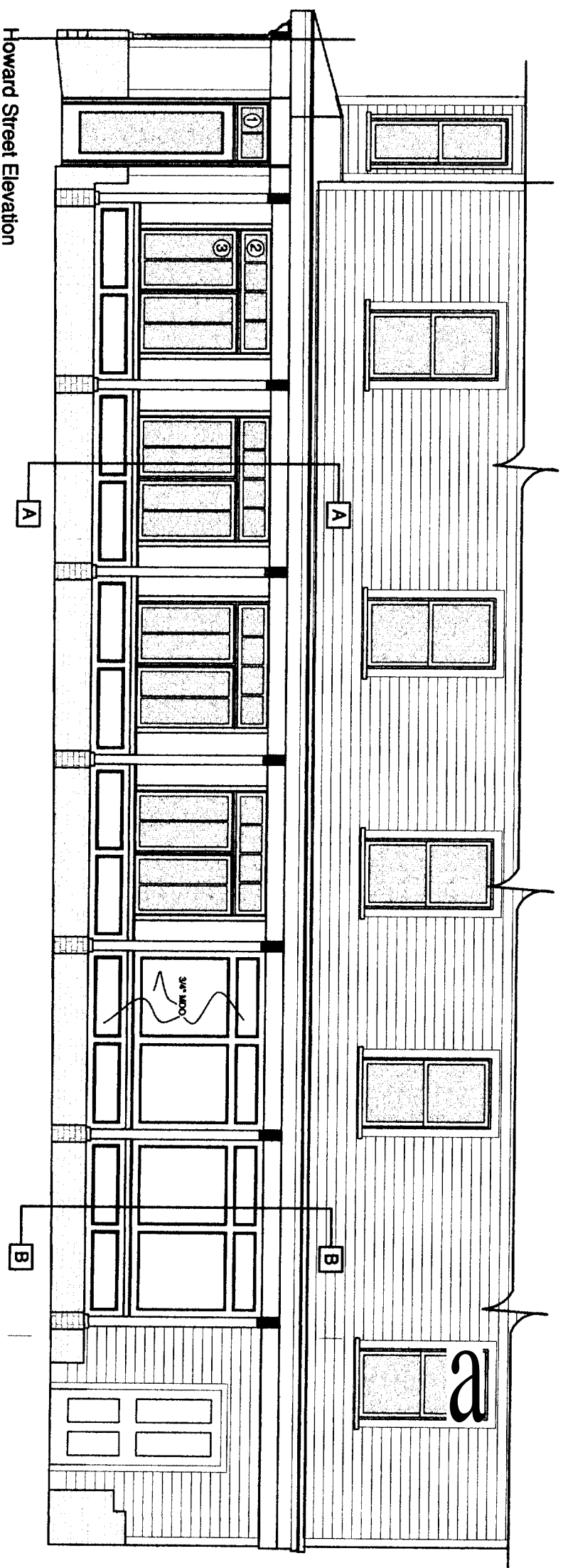
This section of wall remove and rebuilt as per plans



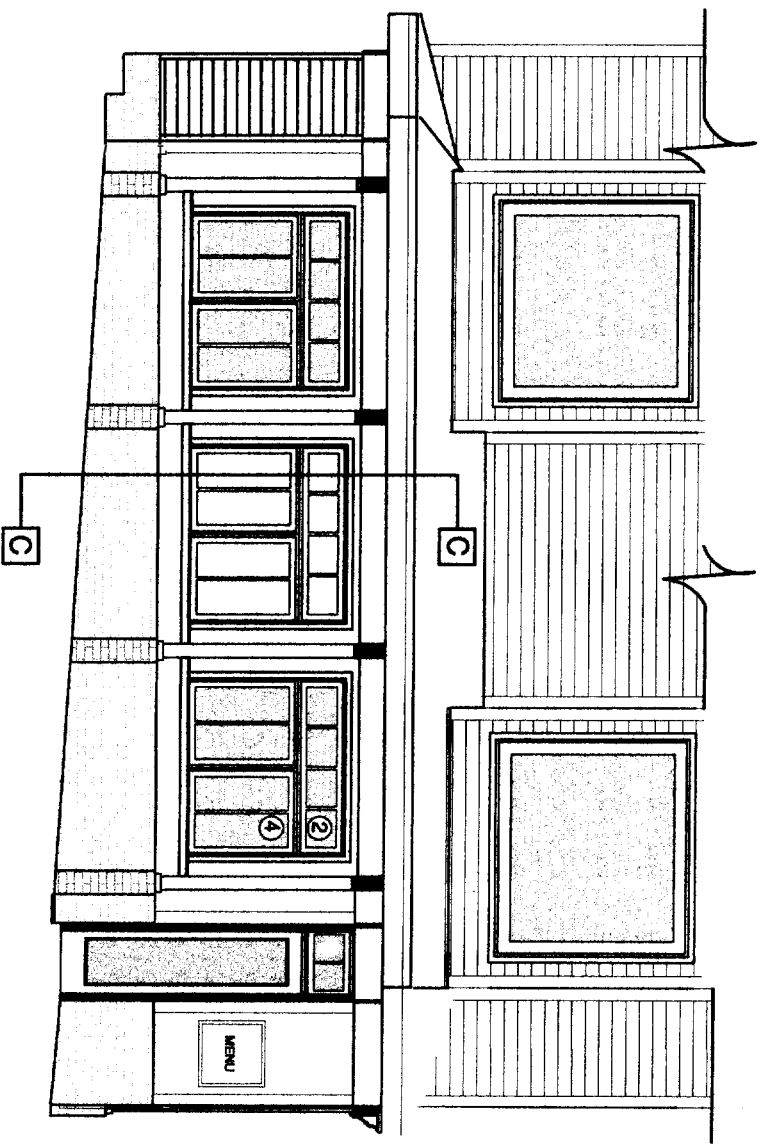
General Notes:

- 1) Remove plastic "slate" siding on both exterior walls. Re use on eaves.
- 2) Remove eave and shingles on Howard St. wall.
- 3) Remove brick knee wall, 2x4 framing & 2x10 headers on Congress St. elev.
- 4) Remove all existing ground floor windows & corner entry door.
- 5) Rebuild Congress St. wall with 2x6's as per dwg. page 1.
- 6) Re frame openings for new windows on Howard street wall as per dwg. page 1.
- 7) Build new 12" masonry wall on Congress St. elev. as per above dwg.
- 8) Shore ceiling joists as necessary prior to demolition of Congress St. wall.





Howard Street Elevation

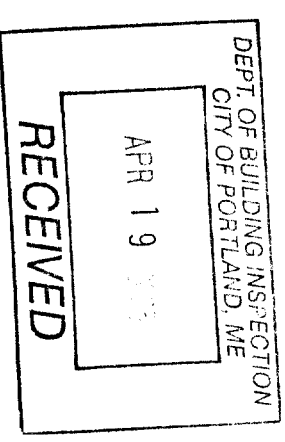


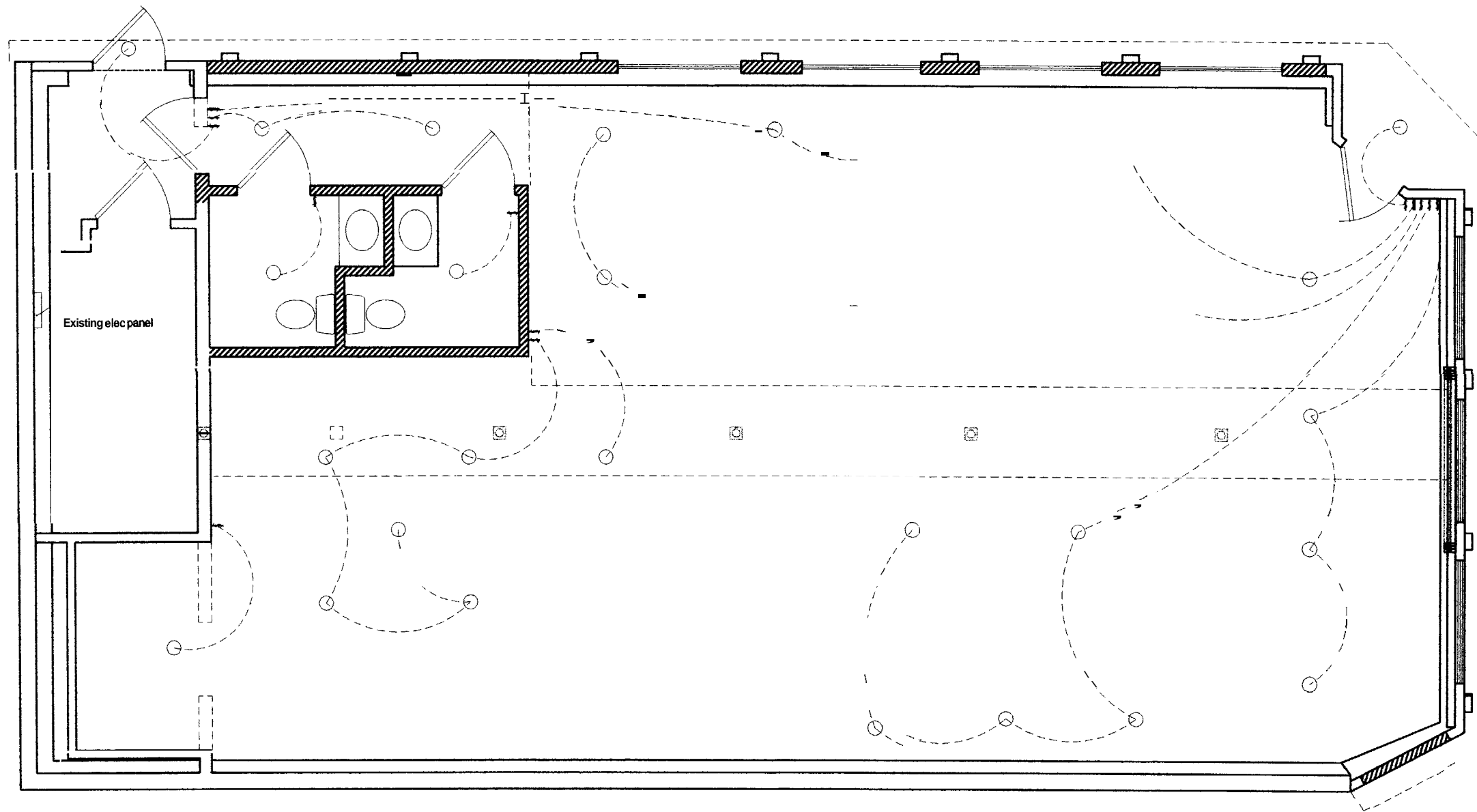
Congress Street Elevation

WINDOW SCHEDULE

Key	Quantity	Type	RO
①	1	Fixed Transom E1114S	3'-0-1/2" x 1'-4-1/2"
②	7	Fixed Transom N314P	5'-0-1/2" x 1'-4-1/2"
③	4	Double Casement X24	5'-0-1/2" x 4'-0-1/2"
④	3	Double Casement X23	5'-0-1/2" x 3'-0-1/2"

NOTES: Window manufacture is Kolbe & Kolbe
 Style is Heritage Series
 Units are wood with custom casings.
 Mullins are located as per drawing.
 Casement windows shall receive stops
 preventing them from opening more than 12"
 beyond building face.





ELECTRICAL NOTES:

Light fixtures are 5 recessed cans w baffels & thermally protected (ceiling is insulated).
 Wall recepticals as per code. Additional recepticals by tenant.
 Additional lighting, appliance recepticals, exit lighting etc. by tenant.

DEPT. OF BUILDING INSPECTION
 CITY OF PORTLAND, ME
 APR 19 2005
 RECEIVED