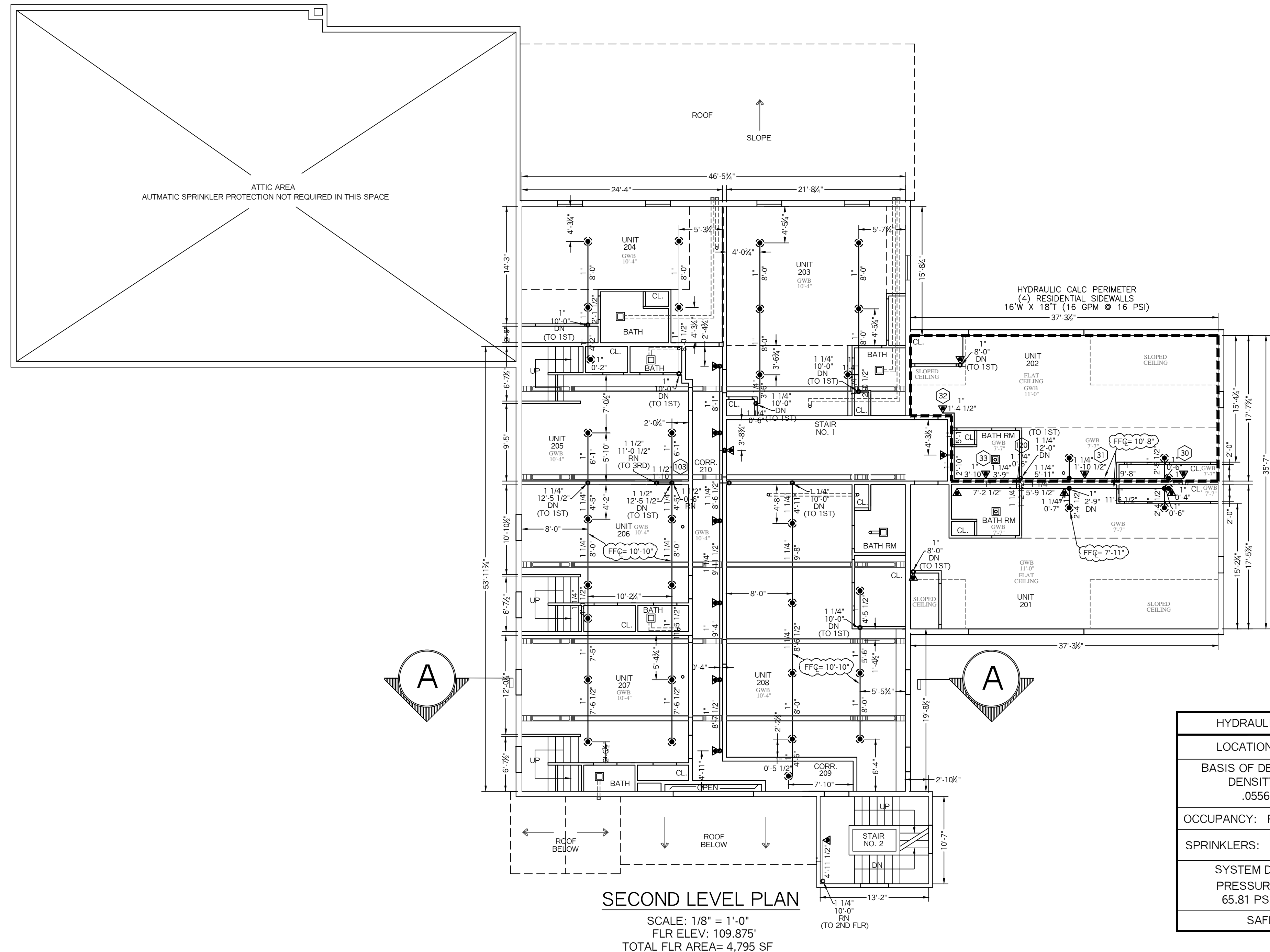
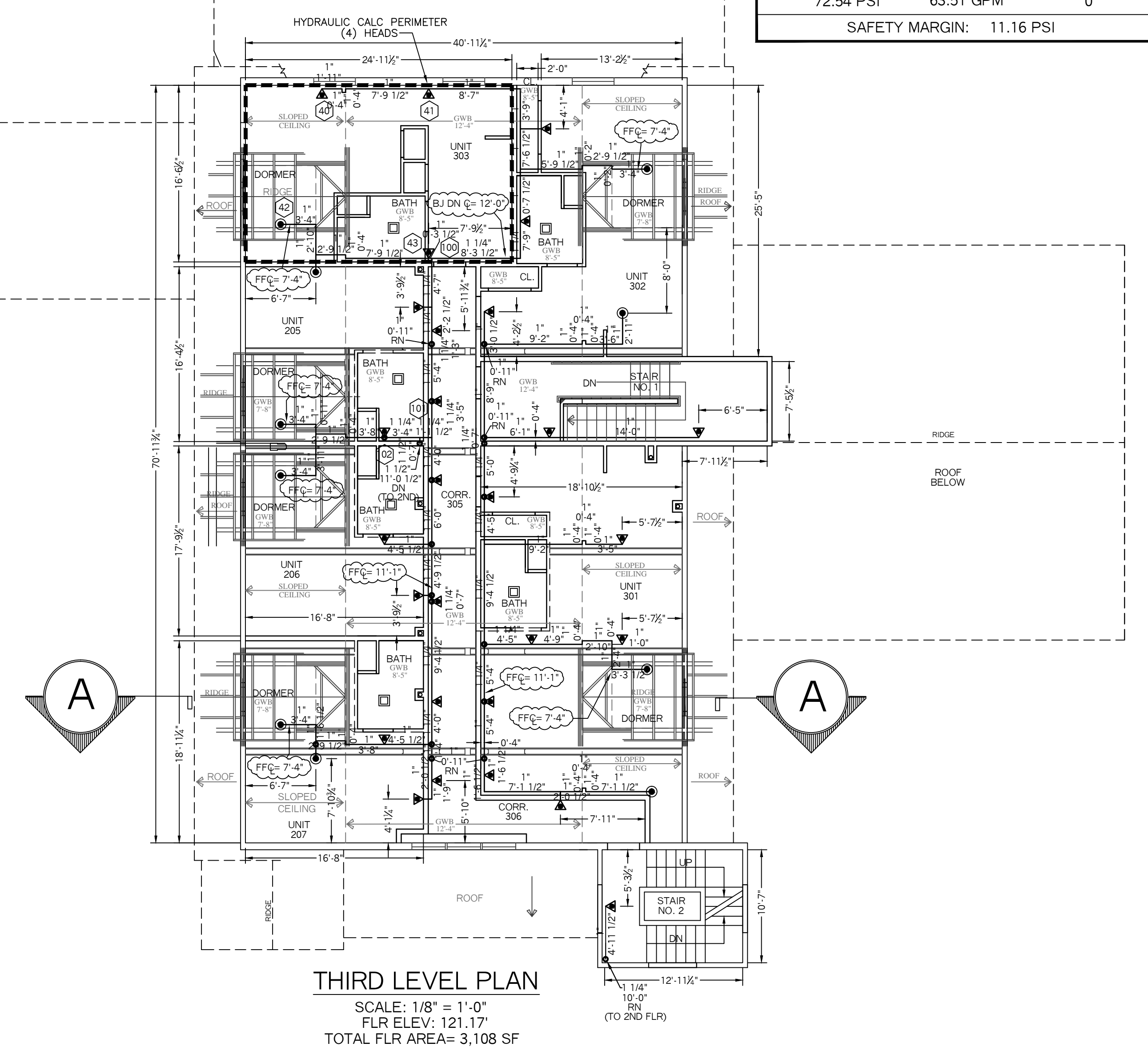


HYDRAULIC CALCULATION INFORMATION			
LOCATION: 3RD FLOOR APARTMENT (AREA #3)			
BASIS OF DESIGN: NFPA 13, 2007 EDITION			
DENSITY	AREA OF COVERAGE		
.0508	4 HEADS		
OCCUPANCY: RESIDENTIAL APARTMENT			
SPRINKLERS:	TOTAL	THRD	ORIFICE TEMP
	4	1/2"	7/16" 155
SYSTEM DEMAND AT BASE OF RISER (BOR):			
PRESSURE	FLOW	HOSE	
72.54 PSI	63.51 GPM	0	
SAFETY MARGIN: 11.16 PSI			



HYDRAULIC CALCULATION INFORMATION			
LOCATION: 2ND FLOOR APARTMENT (AREA #3)			
BASIS OF DESIGN: NFPA 13, 2007 EDITION			
DENSITY	AREA OF COVERAGE		
.0556	4 HEADS		
OCCUPANCY: RESIDENTIAL APARTMENT			
SPRINKLERS:	TOTAL	THRD	ORIFICE TEMP
	4	1/2"	7/16" 155
SYSTEM DEMAND AT BASE OF RISER (BOR):			
PRESSURE	FLOW	HOSE	
65.81 PSI	65.17 GPM	0	
SAFETY MARGIN: 18.54 PSI			

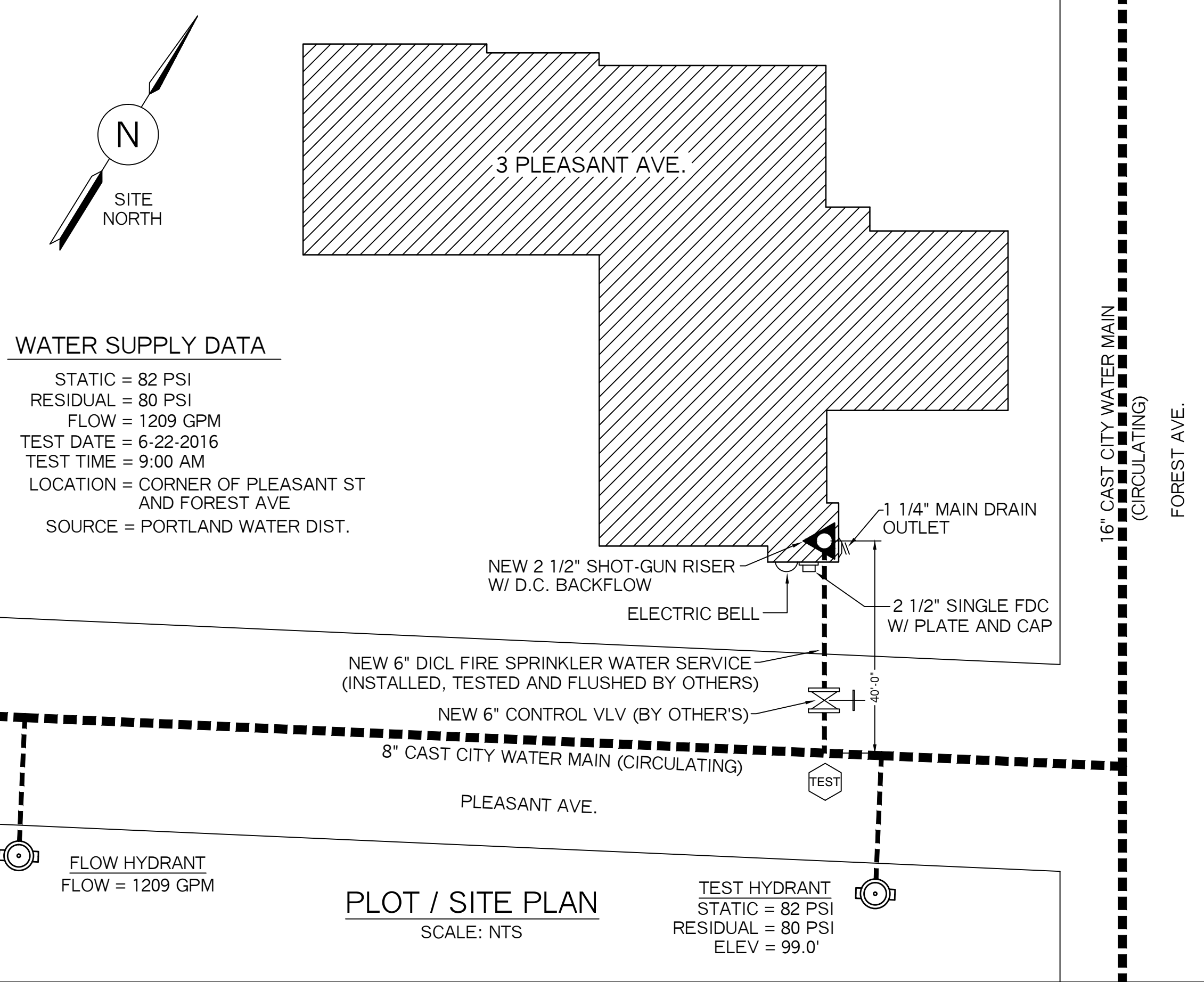
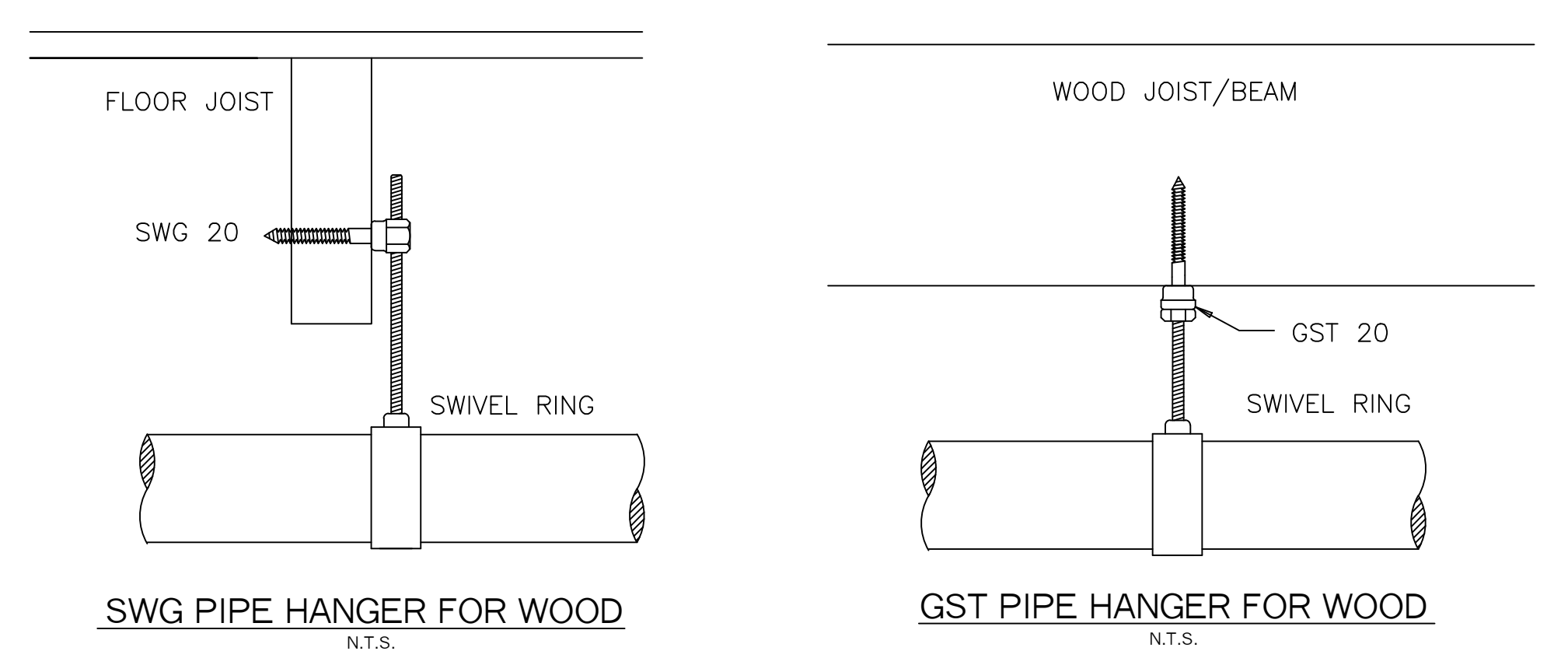


SPRINKLER HEAD INFORMATION, FOR THIS FLOOR ONLY									
QTY	SIZE	ORIFICE	K-FACTOR	DESCRIPTION	MODEL	TEMP	ESCUICHEON	SYMBOL	
28	1/2"	7/16"	4.0	VIKING RES. WHITE HOR. SIDEWALL	VK486	155	RECESSED	◀	
10	1/2"	7/16"	4.9	VIKING RES. WHITE UPRIGHT	VK467	155	NONE	●	
TOTAL HD'S= 38									

SPRINKLER HEAD INFORMATION, FOR THIS FLOOR ONLY									
QTY	SIZE	ORIFICE	K-FACTOR	DESCRIPTION	MODEL	TEMP	ESCUICHEON	SYMBOL	
16	1/2"	7/16"	4.0	VIKING RES. WHITE HOR. SIDEWALL	VK486	155	RECESSED	◀	
36	1/2"	7/16"	4.9	VIKING RES. WHITE PENDENT	VK468	155	RECESSED	●	
TOTAL HD'S= 52									

- SYSTEM GENERAL NOTES:**
- A WET PIPE SYSTEM OF AUTOMATIC SPRINKLERS DESIGNED AND INSTALLED PER NFPA 13R (2016 EDITION)
  - NEW 6" DICL UNDERGROUND SPRINKLER WATER LINE TO BE INSTALLED, TESTED AND FLUSHED BY OTHERS IN ACCORDANCE WITH NFPA 24 AND LOCAL CODES. RESIDENTIAL FIRE PROTECTION TO START AT UNI-FLANGE AT THE END OF 6" DICL SPIGOT IN THE BASEMENT.
  - 2 1/2" SHOT-GUN VALVE RISER WITH A VERTICAL COLT "C200" DOUBLE CHECK BACKFLOW.
  - EXPOSED LINE PIPING THROUGHOUT THE BUILDING TO BE SCHEDULE 40 BLACK STEEL WITH THREADED C.I. FITTINGS WITH EITHER AN UPRIGHT, PENDENT OR SIDEWALL HEADS ON LINE.
  - CONCEALED PIPE TO HAVE WHITE RECESSED RESIDENTIAL PENDENT HEADS INSTALLED ON THE CEILINGS WITH DROPS AND WHITE RECESSED RESIDENTIAL SIDEWALL HEADS WILL BE INSTALLED ON THE WALLS.

- NFPA 13R NOTES:**
- SPRINKLERS SHALL BE INSTALLED IN ALL AREA'S EXCEPT THE FOLLOWING:
- BATHROOMS WHERE THE AREA DOES NOT EXCEED 55 SF
  - CLOTHES CLOSET'S, LINEN CLOSET'S AND PANTRIES THAT MEET THE FOLLOWING CONDITIONS:
    - THE AREA OF THE SPACE DOES NOT EXCEED 24 SF
    - THE LEAST DIMENSION DOES NOT EXCEED 3'-0"
    - THE WALLS AND CEILINGS ARE SURFACED WITH NON-COMBUSTIBLE OR LIMITED COMBUSTIBLE MATERIALS.
  - PORCHES, BALCONIES, CORRIDORS AND STAIRS THAT ARE OPEN AND ATTACHED
  - CLOSETS ON EXTERIOR BALCONIES, REGARDLESS OF SIZE, AS LONG AS THERE ARE NO DOORS OR UNPROTECTED PENETRATIONS FROM THE CLOSET DIRECTLY INTO THE DWELLING UNIT.



**WATER SUPPLY DATA**

STATIC = 82 PSI  
 RESIDUAL = 80 PSI  
 FLOW = 1209 GPM  
 TEST DATE = 6-22-2016  
 TEST TIME = 9:00 AM  
 LOCATION = CORNER OF PLEASANT ST AND FOREST AVE  
 SOURCE = PORTLAND WATER DIST.

PROJECT NAME:	PLEASANT AVE APARTMENTS 3 PLEASANT AVE PORTLAND, ME. 04101	FIRE SPRINKLER PLANS AND DETAILS	RESIDENTIAL FIRE PROTECTION, LLC
CONTRACT WITH:	HARDYOND CONSTRUCTION 1039 RIVERSIDE STREET PORTLAND, ME. 04103 PH: (207) 797-6066	REQUIRED APPROVALS: STATE FIRE MARSHALS OFFICE LOCAL FIRE DEPARTMENT OWNER	DATE: 6-30-2016
<b>RESIDENTIAL FIRE PROTECTION</b> 64 DAGGETT HILL ROAD, GREENE, MAINE 04236 PH: (207) 946-3473 FAX: (207) 946-3474		DRAWN BY: TTP NICET III CERTIFICATION # 100854	SCALE: 1/8" = 1'-0"
		CHECKED BY: SJC NICET III (108864) CERTIFICATION # 78065	CONTRACT NO. C16015
		CONTRACTOR LICENSE #511	DRAWING NO. 2 OF 2
		CONTRACTOR RMS #80	