

HYDRAULIC CALCULATION INFORMATION			
LOCATION: BASEMENT (AREA #1)			
BASIS OF DESIGN: NFPA 13R, 2007 EDITION			
DENSITY AREA OF COVERAGE: .15 901SQ FT			
OCCUPANCY: BUSINESS MISC. STORAGE			
SPRINKLERS:	TOTAL	THRD	ORIFICE TEMP
	9	1/2"	155
SYSTEM DEMAND AT BASE OF RISER (BOR):			
PRESSURE	FLOW	HOSE	250
75.37 PSI	193.99 GPM		
SAFETY MARGIN: 8.81 PSI			

**BASEMENT LEVEL PLAN**

SCALE: 1/8" = 1'-0"  
 FLR ELEV: 92.0'  
 TOTAL FLR AREA= 8,427 SF

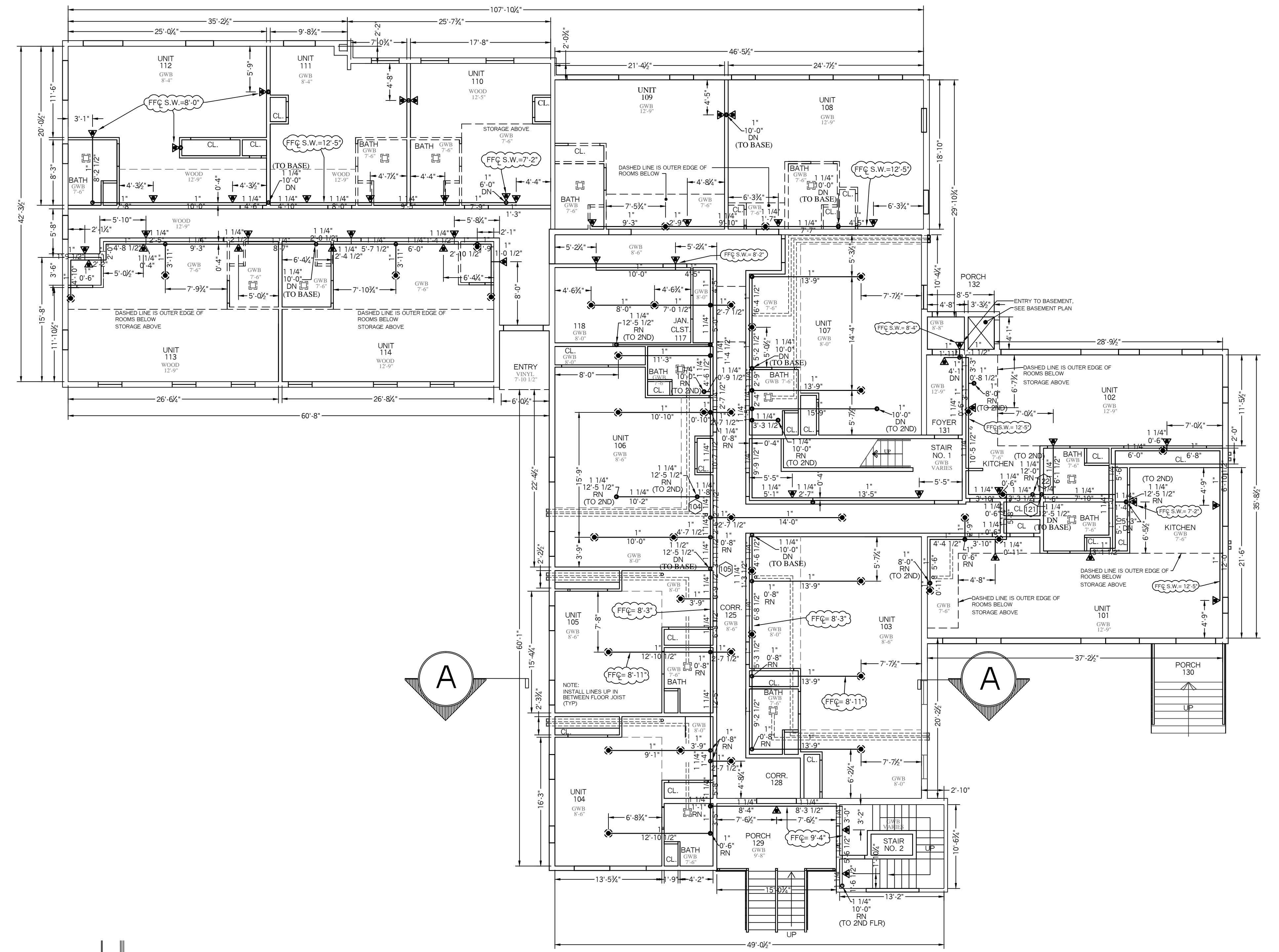
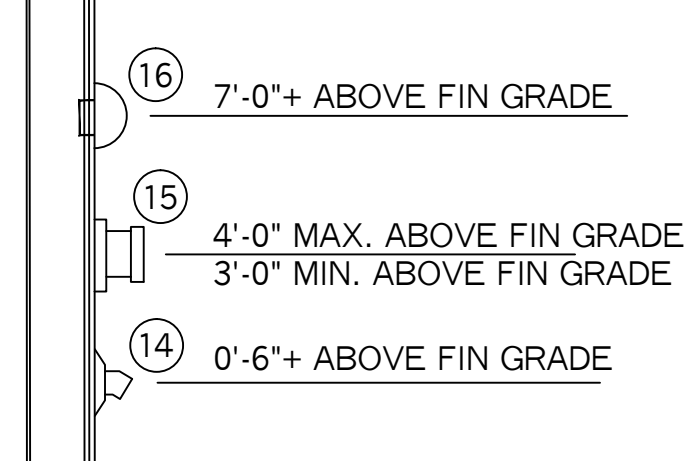
**SPRINKLER HEAD INFORMATION, FOR THIS FLOOR ONLY**

QTY	SIZE	ORIFICE	K-FACTOR	DESCRIPTION	MODEL	TEMP	ESCUTCHEON	SYMBOL
56	1/2"	1/2"	5.6	VIKING BRASS UPRIGHT (ON LINE)	VK300	155	NONE	○
16	1/2"	1/2"	5.6	VIKING BRASS UPRIGHT (ON SPRIG)	VK300	155	NONE	⊙
10	1/2"	1/2"	5.6	VIKING BRASS PENDENT (ON LINE)	VK302	155	NONE	●

TOTAL HD'S= 82

SEE FIRST FLR PLAN FOR LOCATION OF OUTSIDE DEVICES

**EXTERIOR SPRINKLER COMPONENTS**  
N.T.S.



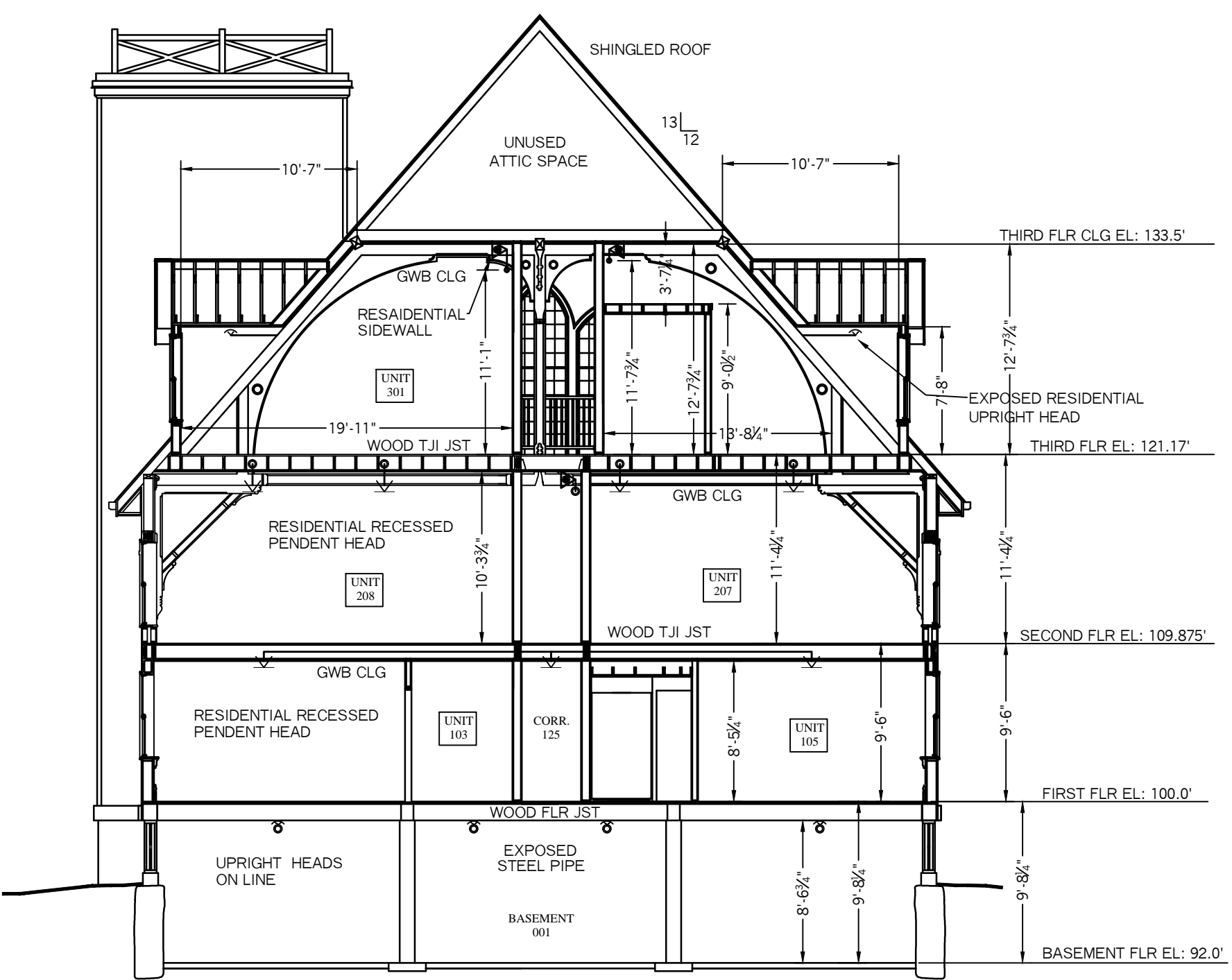
**FIRST LEVEL PLAN**

SCALE: 1/8" = 1'-0"  
 FLR ELEV: 100.0'  
 TOTAL FLR AREA= 8,512 SF

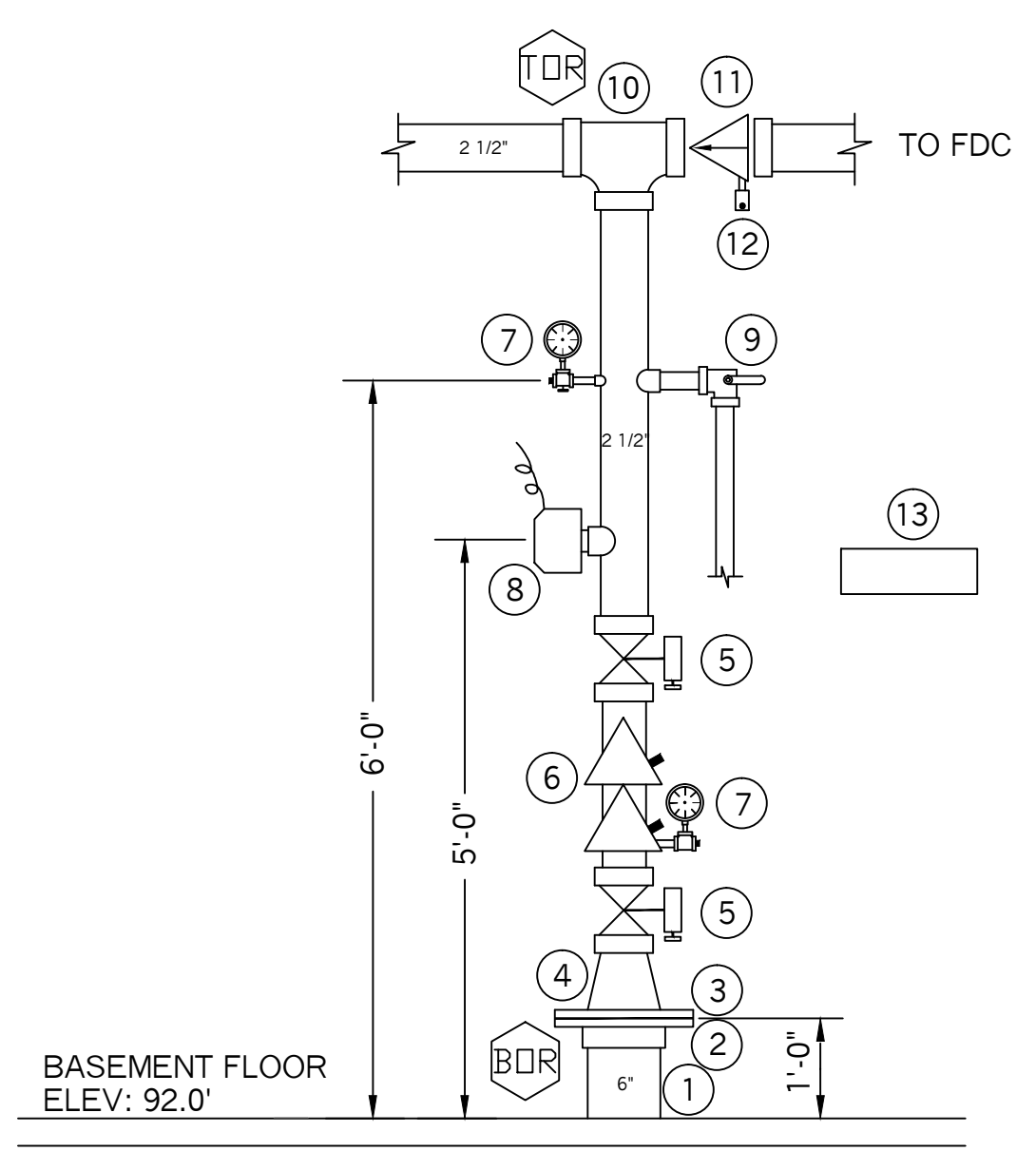
**SPRINKLER HEAD INFORMATION, FOR THIS FLOOR ONLY**

QTY	SIZE	ORIFICE	K-FACTOR	DESCRIPTION	MODEL	TEMP	ESCUTCHEON	SYMBOL
48	1/2"	7/16"	4.0	VIKING RES. WHITE HOR. SIDEWALL	VK486	155	RECESSED	◐
32	1/2"	7/16"	4.9	VIKING RES. WHITE PENDENT	VK468	155	RECESSED	◑

TOTAL HD'S= 80



**BUILDING SECTION - AA-**  
N.T.S.



**VALVE RISER DETAIL**  
N.T.S.

- VALVE RISER LEGEND**
- ① 6" DI. UNDERGROUND SPIGOT (BY OTHER'S)
  - ② 6" UNI-FLANGE (BY OTHER'S)
  - ③ 6" GROOVED FLANGE
  - ④ 6" X 2 1/2" GROOVED CONCENTRIC REDUCER
  - ⑤ 2 1/2" BUTTERFLY VALVE W/ TAMPER SWITCH
  - ⑥ 2 1/2" AMES COLT "C200" DOUBLE CHECK BACKFLOW PREVENTER
  - ⑦ WATER PRESSURE GAUGE (3.5" DIA.)
  - ⑧ POTTER VSR-2 1/2 VANE TYPE FLOW SWITCH, WIRED BY OTHER'S
  - ⑨ 1 1/4" TEST AND DRAIN VALVE (N.C.) (7/16" TEST ORIFICE)
  - ⑩ 2 1/2" GROOVED TEE
  - ⑪ 2 1/2" GROOVED CHECK VALVE
  - ⑫ 1/2" AUTOMATIC BALL DRIP
  - ⑬ SPARE HEAD BOX, 6 HD CAPACITY W/ WRENCH
  - ⑭ 1 1/4" GALV. 45 ELBOW W/ GALV. GRINNELL PLATE (MAIN DRAIN)
  - ⑮ 2 1/2" SINGLE FDC W/ WALL PLATE, CAP & CHAIN
  - ⑯ ELECTRIC BELL, 6" DIA., W/ BACKBOX (MOUNTED TO OUTSIDE AND WIRED BY OTHERS)

- SYSTEM SYMBOL LEGEND:**
- = SS UPRIGHT
  - ◐ = RESIDENTIAL PENDENT
  - ◑ = RESIDENTIAL SIDEWALL
  - ◒ = WET SHOT-GUN RISER
  - ① = HYDRAULIC CALC REF PT
  - ⊙ = DRAIN VALVE
  - ⊘ = GROOVED COUPLING
  - [ ] = GROOVED CAP

PROJECT NAME:	<b>PLEASANT AVE APARTMENTS</b> 3 PLEASANT AVE PORTLAND, ME. 04101	FIRE SPRINKLER PLANS AND DETAILS REQUIRED APPROVALS: STATE FIRE MARSHALS OFFICE LOCAL FIRE DEPARTMENT	RESIDENTIAL FIRE PROTECTION, LLC
CONTRACT WITH:	<b>HARDYOND CONSTRUCTION</b> 1039 RIVERSIDE STREET PORTLAND, ME. 04103 PH: (207) 797-6066	OWNER:	DATE: 6-30-2016
DRAWN BY: TPP NICET III CERTIFICATION # 100854		CHECKED BY: SJC NICET III (108864) CERTIFICATION # 78065	SCALE: 1/8" = 1'-0"
<b>RESIDENTIAL FIRE PROTECTION</b> 64 DAGGETT HILL ROAD, GREENE, MAINE 04236 PH: (207) 946-3473 FAX: (207) 946-3474		CONTRACTOR LICENSE #511 CONTRACTOR RMS #80	CONTRACT NO. C16015 DRAWING NO. 1 OF 2