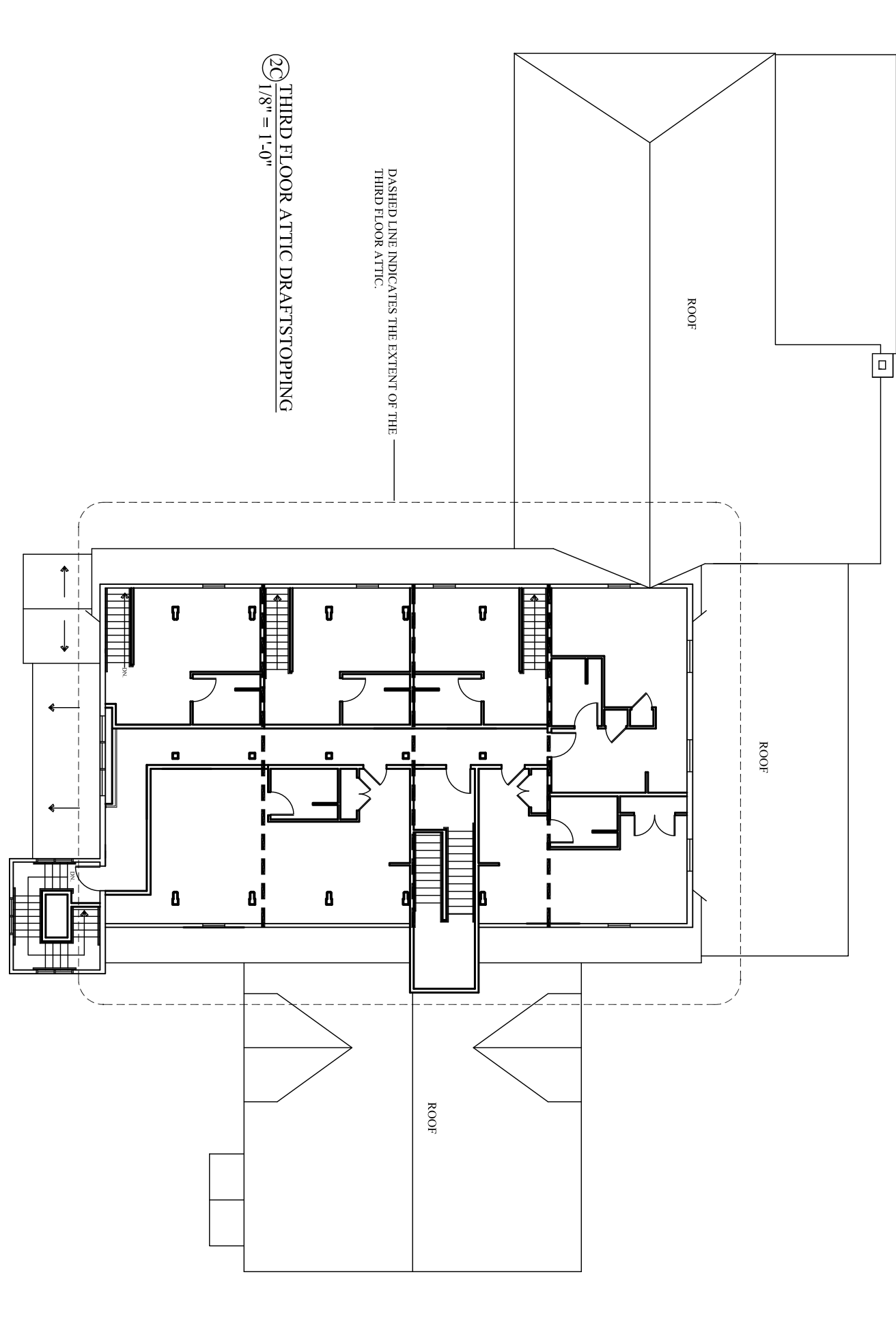
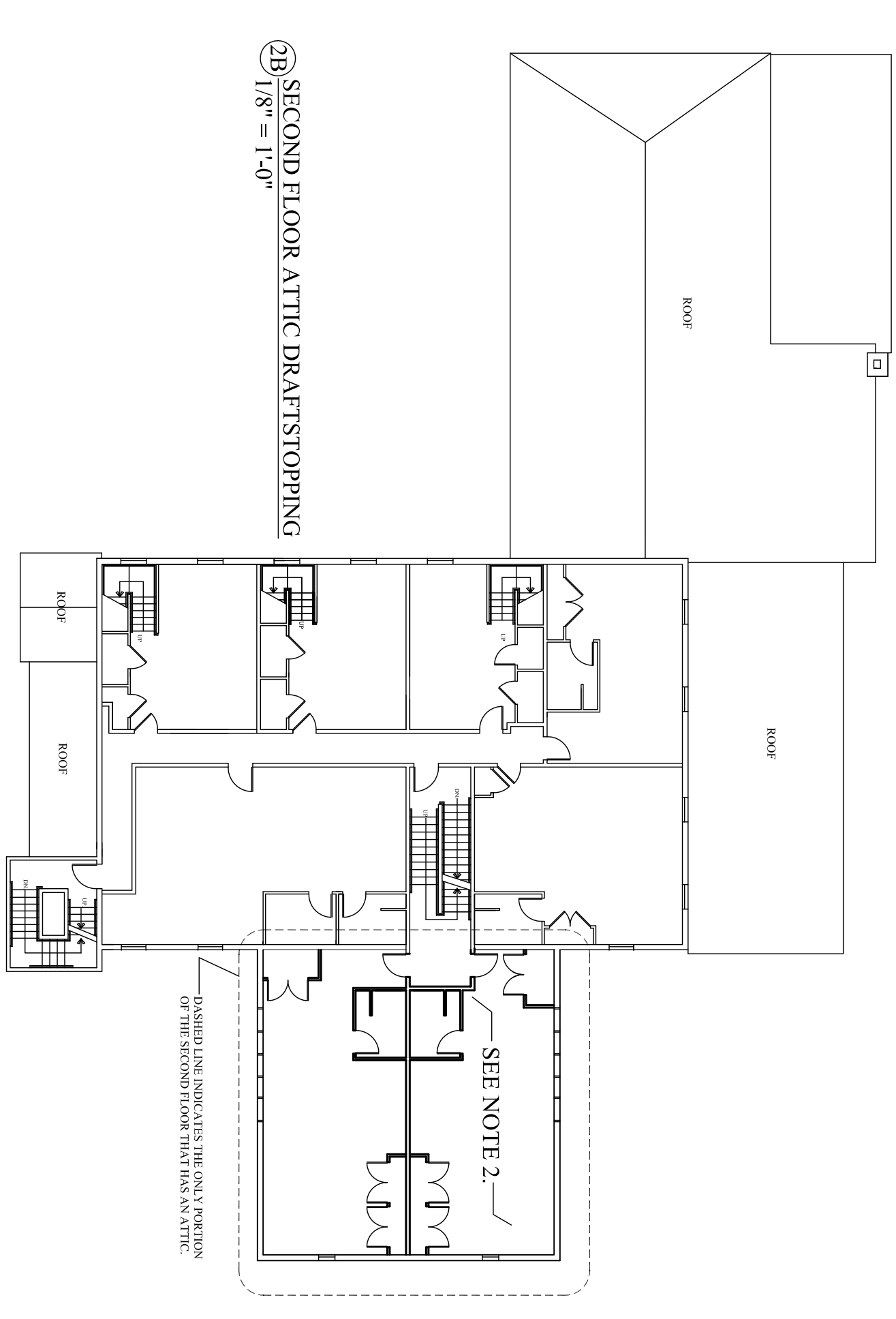
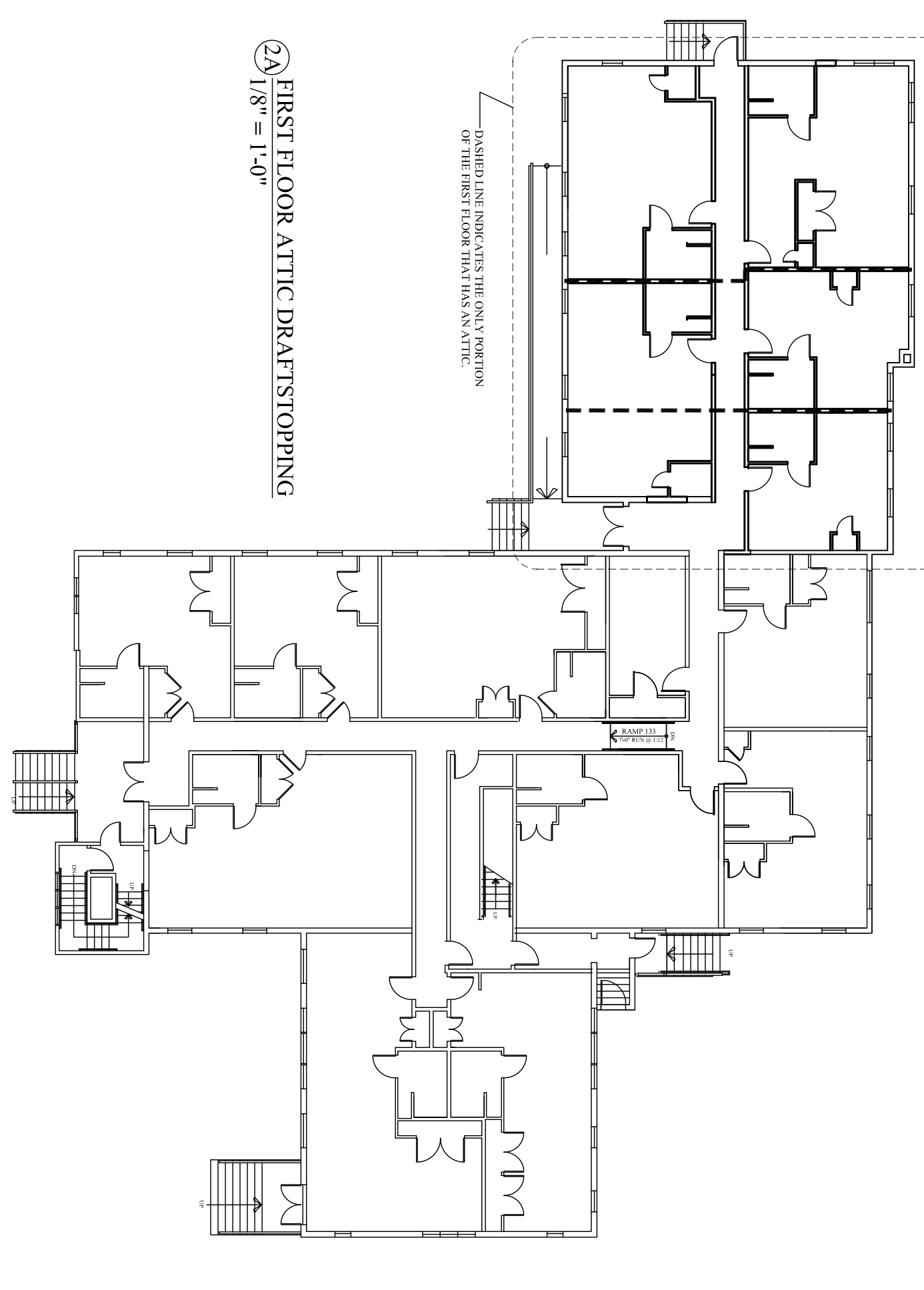


**DRAFTSTOPPING**

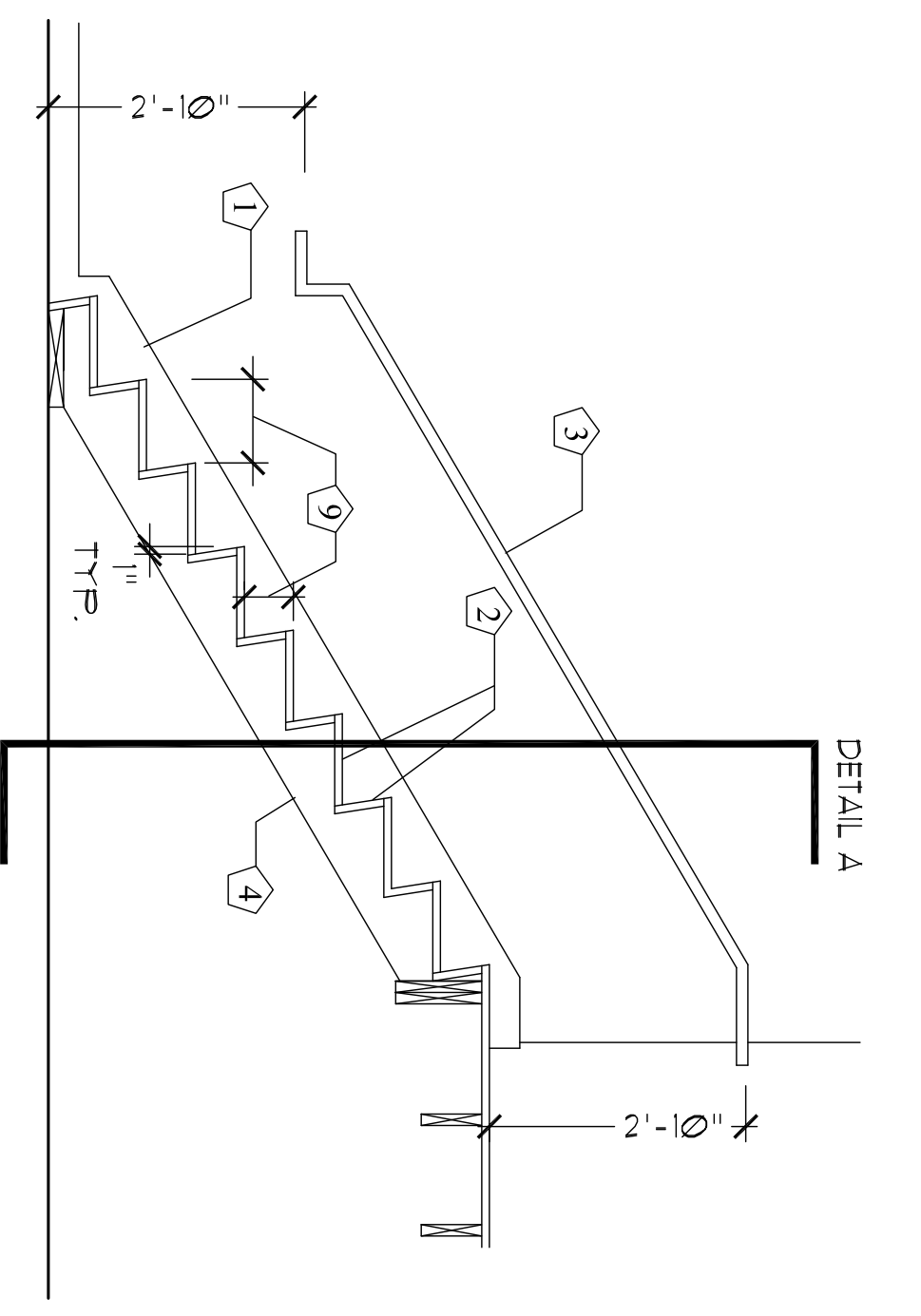
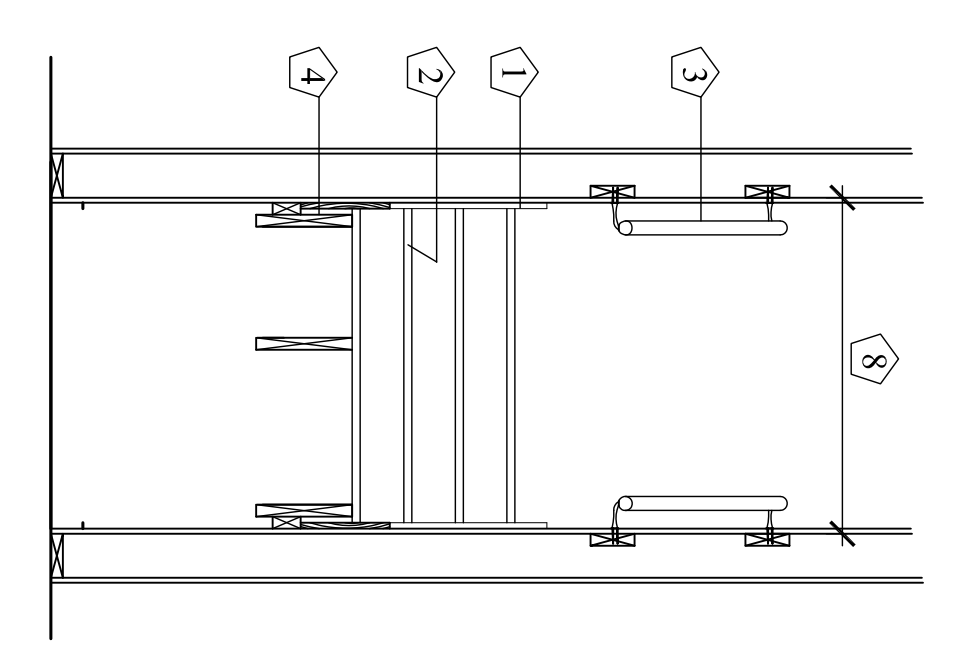
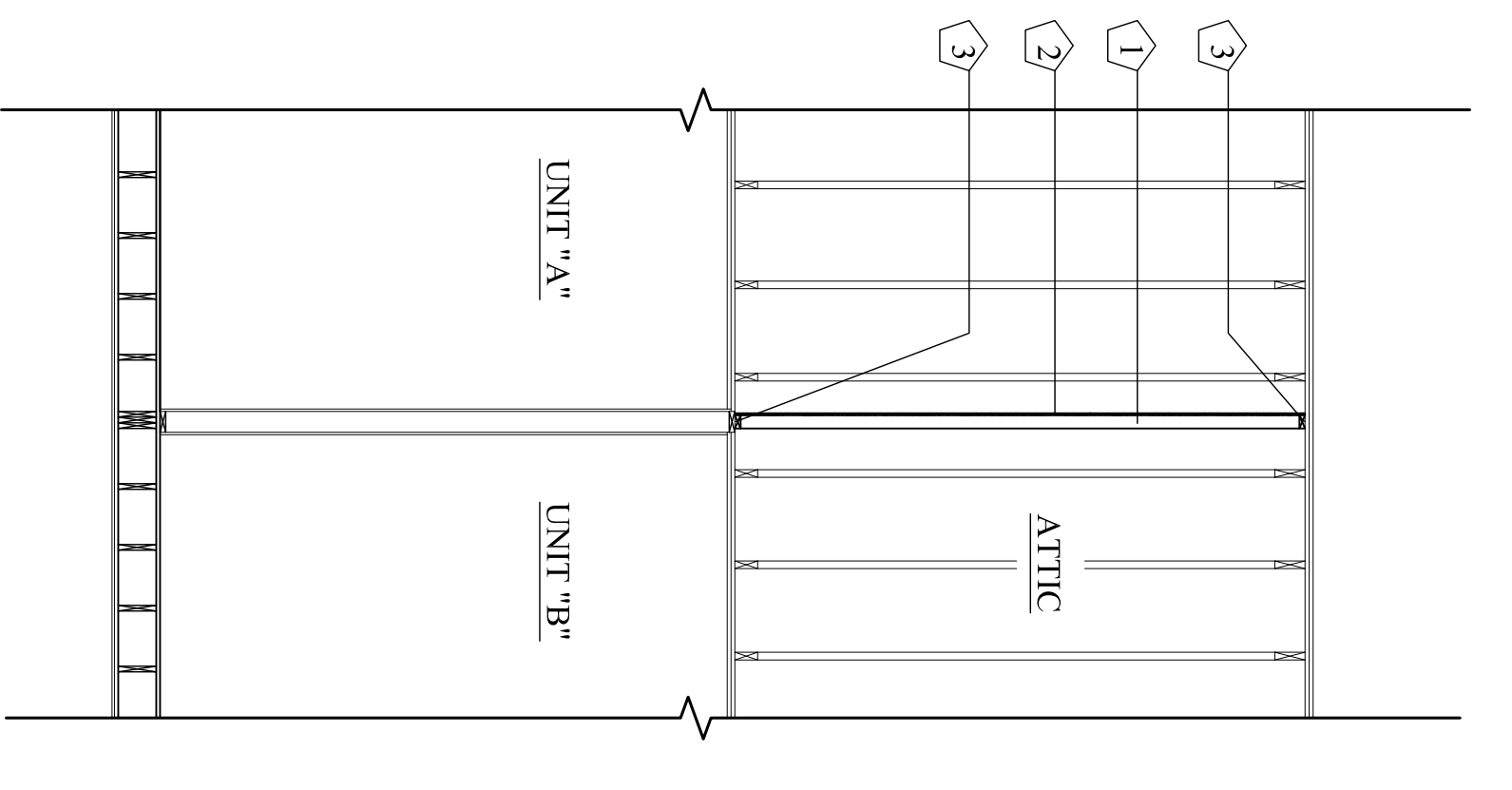
LEGEND  
 Draftstopping **-----**

**DRAFTSTOPPING NOTES:**  
 1. DRAFTSTOPPING TO CONSIST OF 1/2" GB SUPPORTED BY 2x4 @ 24" O.C.  
 2. DRAFTSTOPPING NOT REQUIRED AT SECOND FLOOR ATTIC PER 2009 IBC SECTION 711.4.2 EXCEPTION 3 - TWO DWELLING UNITS OR FEWER.



**3**  
 1/4" = 1'-0"  
**TYPICAL DRAFTSTOPPING ASSEMBLY**

- KEYED NOTES:**  
 1) 2x4 AT 24" O.C.  
 2) 1/2" GB - TAPE & MUD  
 3) 2x4 BOTTOM & TOP PLATES - SEAL AIR GAPS

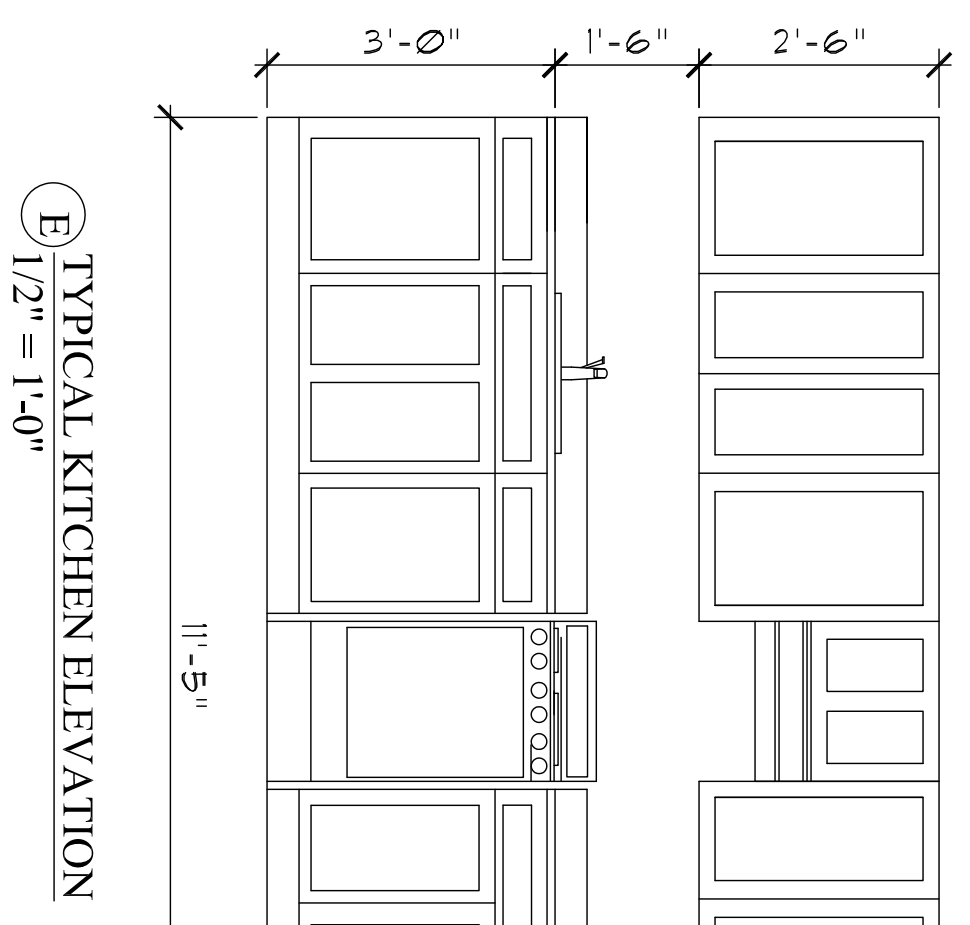
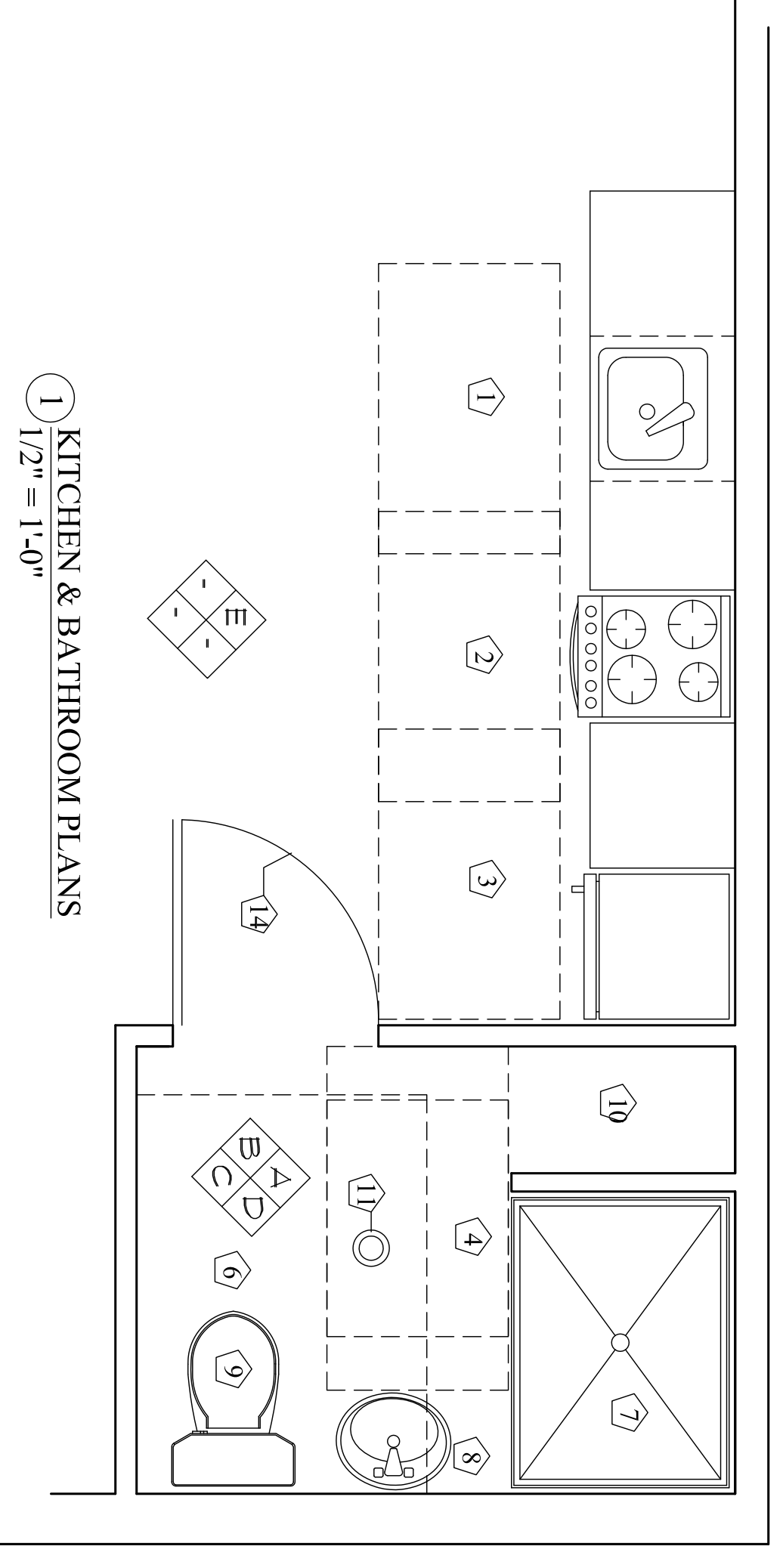


**KEYED NOTES**

- 1) 1/2" FINISH SPRINGER - FTD
- 2) TYPICAL TREAD AND RISER - 1 1/2" TYPICAL TREAD AND 3" TYPICAL RISER. FINISH: 3/4" OAK. 2" INTERNAL STAIRS IN UNITS 205, 206, 207. 1" OAK TREADS 3/4" SOUTHERN PINE RISERS.
- 3) 1 1/2" DIA HANDRAIL - SEE DETAIL B
- 4) (2) 2X2 CARVABLES
- 5) 1 1/2" X 3/4" OAK HANDRAIL
- 6) BRASS BUCKETS @ 8'-0" MAX O.C. AND SOLID BRASS SPINDLES @ 4'-0" MAX O.C. FINISH: POLISHED BRASS. NOSING LINE SHALL EXTEND BEYOND NOSING & LANDING & PLATFORM AS SHOWN. END OF RAILING RETURN TO WALL @ 3/8" FROM WALL. CHANGES IN DIRECTION (90 DEGREE INCLUDED).
- 7) 2x6 SOLID BLOCKING
- 8) STAIR WIDTH - STD TO SHED.  
 1. STAIR W - 3'-6"  
 2. STAIR W - 3'-6"  
 3. UNIT 205, 206, 207 INTERNAL STAIRS - 3'-4"
- 9) TREAD & RISER  
 1. TREAD: 1 1/2" MAX RISER: 1" HEAD  
 2. PORCH: 1 1/2" TREAD: 1" HEAD  
 3. INTERNAL STAIRS IN UNITS 205, 206, 207 - 1 3/4" MAX RISER: 1" HEAD

1) TYPICAL STAIR SECTION  
 1/2" = 1'-0"  
 GRAPHIC SCALE

3'-0" 1'-0"  
 GRAPHIC SCALE  
 3" = 1'-0"



**KITCHEN & BATHROOM NOTES:**

1. KITCHENS & BATHROOMS ON THE FIRST FLOOR COMPLETE WITH ANSI 2009 ICC A117.1 TYPE 'B' UNITS PER THE PLANE HUMAN RIGHTS ACT. DESIGNATED RESIDENTS AND OPERABLE DESIGNATED RESIDENTS SHALL BE LOCATED 44" AFF. MAX AND BY AFF. MIN.

**KEYED NOTES - TYPE 'B' UNITS**

- 1) 30" X 48" CLEAR SPACE AT SINK
- 2) 30" X 48" CLEAR SPACE AT RANGE
- 3) 30" X 48" CLEAR SPACE AT REFRIGERATOR
- 4) 30" X 48" CLEAR SPACE AT SHOULDER
- 5) 30" X 48" CLEAR SPACE AT LAVATORY
- 6) 48" X 56" CLEAR SPACE AT WATER CLOSET
- 7) 48" X 36" ADA COMPLIANT SHOWER ENCLOSURE
- 8) ADA COMPLIANT FRESHWATER LAVATORY
- 9) ADA COMPLIANT WATER CLOSET
- 10) LINEN CLOSET W/SHOWERING
- 11) FLOOR DRAIN
- 12) 2x6 SOLID WOOD BLOCKING AT SEAT LOCATIONS
- 13) 2x6 SOLID WOOD BLOCKING AT GRAB BARS LOCATIONS
- 14) 2'-0" X 6'-8" DOOR

