

**FIRE ALARM SYSTEM LEGEND**

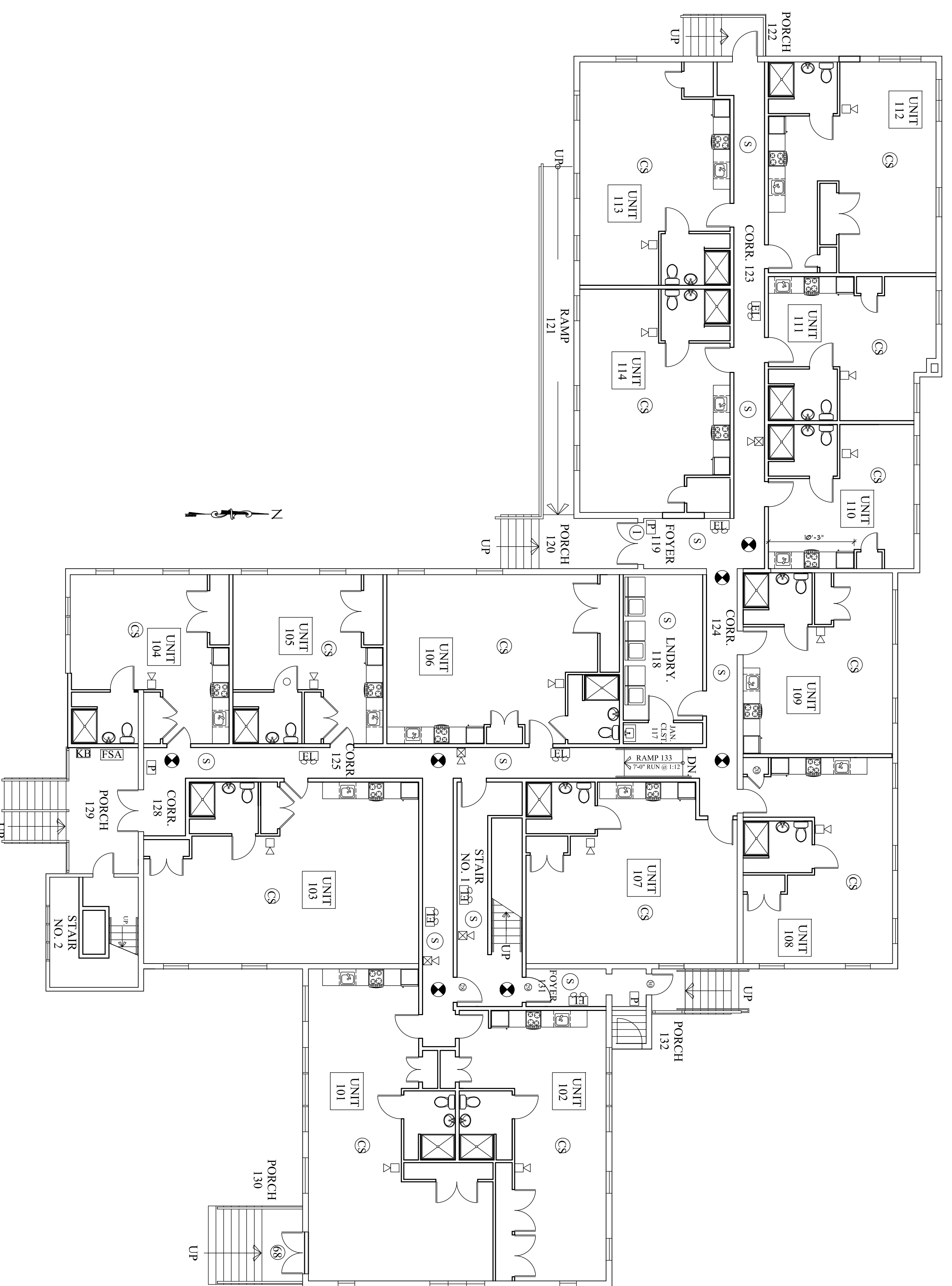
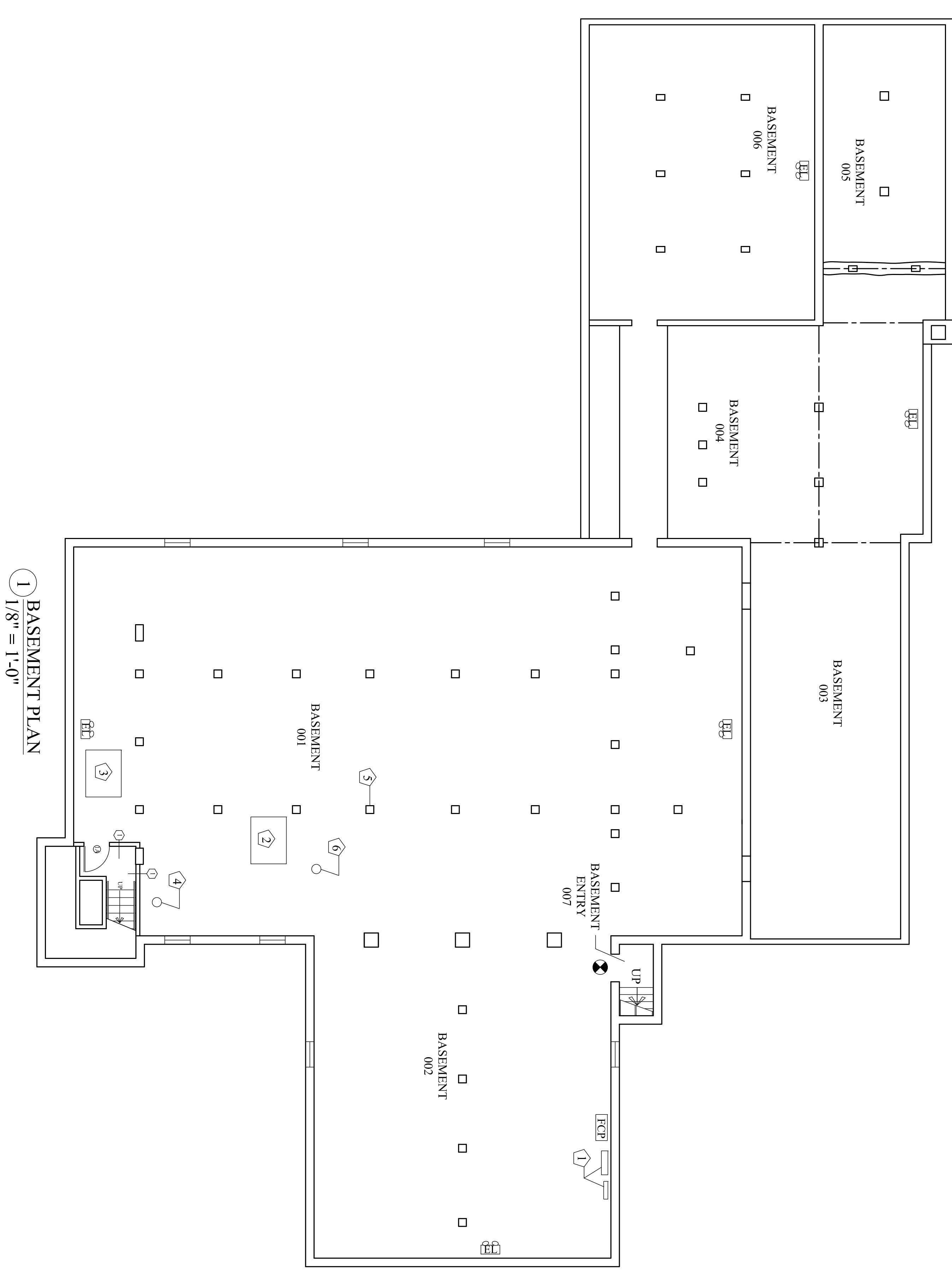
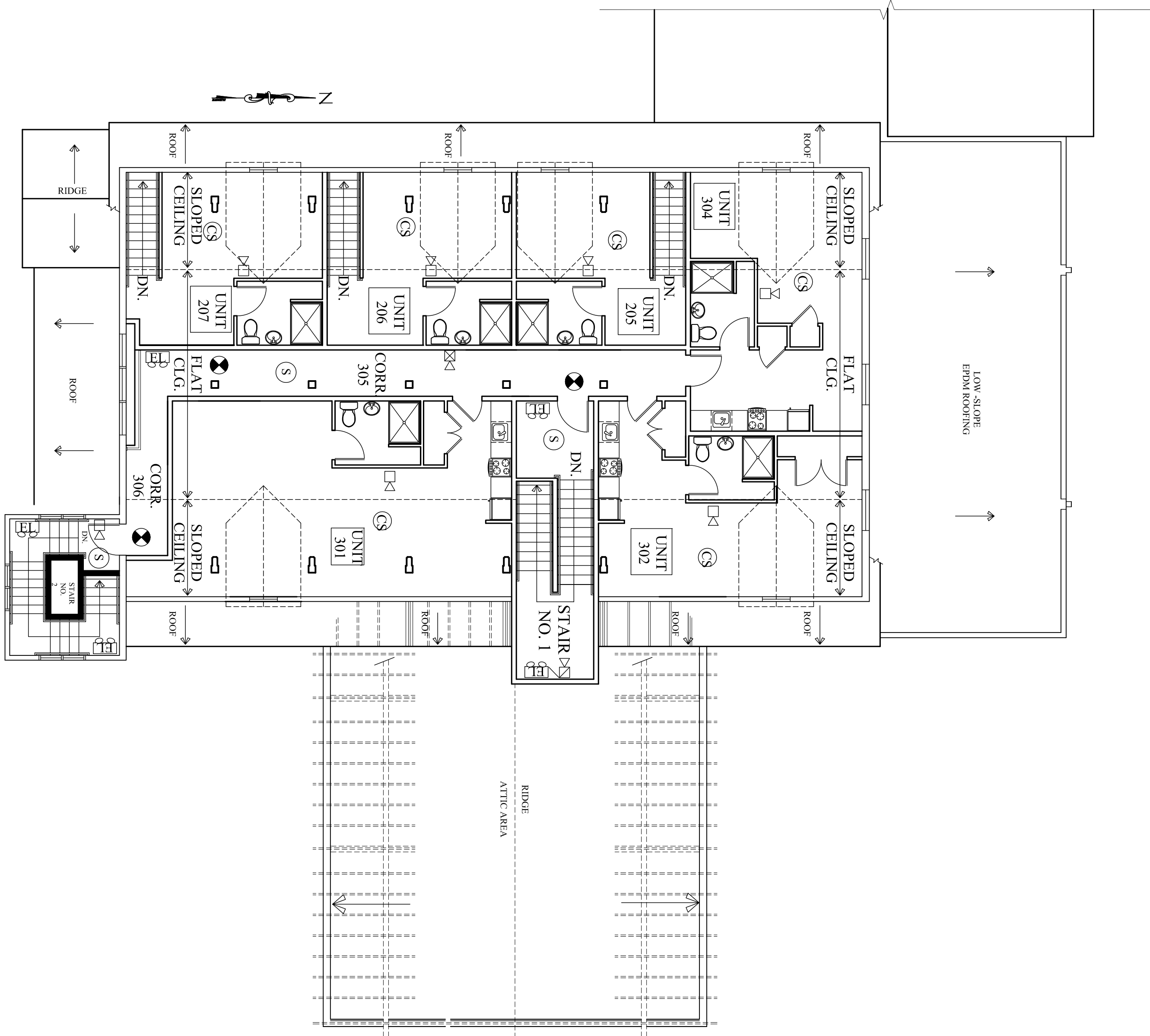
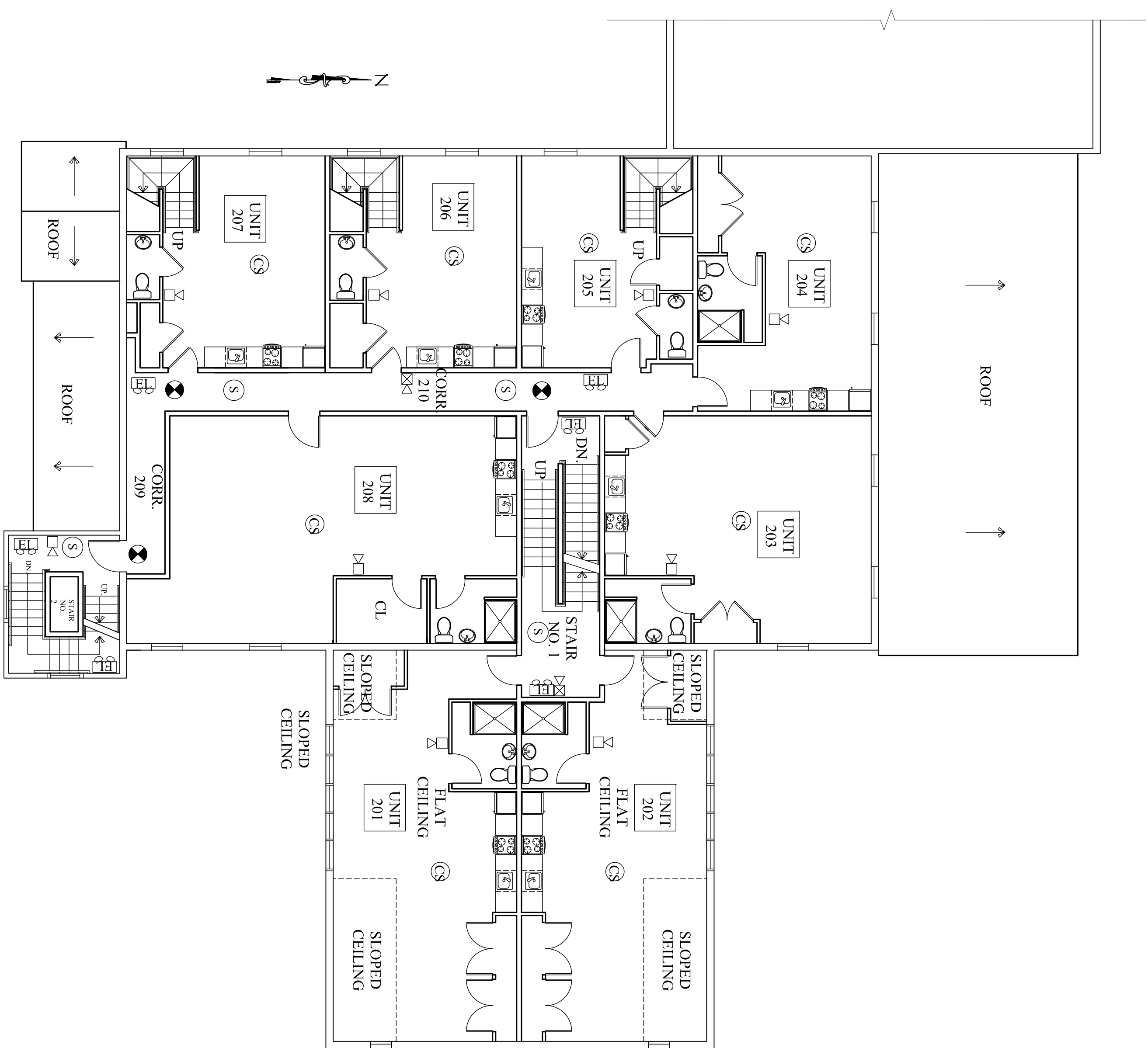
- FIRE ALARM NOTES:**
- PER 2009 IBC 907.5.2.3.4 ALL DWELLING UNITS AND SLEEPING UNITS SHALL BE PROVIDED WITH THE CAPABILITY TO SUPPORT VISIBLE ALARM NOTIFICATION APPLIANCES IN ACCORDANCE WITH ICC A117.1.
  - SEE FIRE ALARM SUB-CONTRACTOR'S DOCUMENTS FOR ADDITIONAL INFORMATION & DETAILS.

- FCP** FIRE ALARM CONTROL PANEL
- FSA** FIRE ALARM ANNUCIATOR PANEL
- KB** KNOX BOX
- PS** PULL STATION
- HS** HORN / STROBE
- H** HORN
- S** SMOKE DETECTOR

**SMOKE & CO DETECTOR, EMERGENCY LIGHTING, EXIT SIGN LEGEND**

- NOTES:**
- NOT USED.
  - INTERCONNECTION - THE SMOKE ALARMS SHALL BE INTERCONNECTED IN SUCH A MANNER THAT THE ACTIVATION OF ONE ALARM WILL ACTIVATE ALL THE ALARMS IN THE INDIVIDUAL UNIT.
  - SELF CONTAINED EMERGENCY LIGHT W/2 HEADS DUAL-LITE (LED) MODEL LZ651-03L, 65 WATTS FOR 90 MINUTES, COLOR BY ARCHITECT.
  - EXIT LIGHT FIXTURE, UNSWITCHED, DUAL-LITE LX-U-R-W-E OR APPROVED EQUAL.
  - SMOKE & CARBON MONOXIDE DETECTOR - PHOTOELECTRIC TYPE. AUDIO/VISUAL NOTIFICATION.

- KEYED NOTES**
- ELECTRICAL PANELS.
  - GAS BOILER & WATER HEATER.
  - SPRINKLER ENTRANCE.
  - SEWER OUTGO.
  - BRICK COLUMN (TYP.).
  - DOMESTIC WATER ENTRANCE.



1 BASEMENT PLAN  
1/8" = 1'-0"



**HARDYPOND DEVELOPMENT, LLC**  
7 TEE DRIVE  
Portland, Maine 04103

**SHIELDS ARCHITECTURE**  
CUMBERLAND, MAINE  
(207) 776-8926

**PLEASANT AVENUE**  
PORTLAND, MAINE

**FIRE ALARM & SMOKE/CO DETECTOR PLANS**