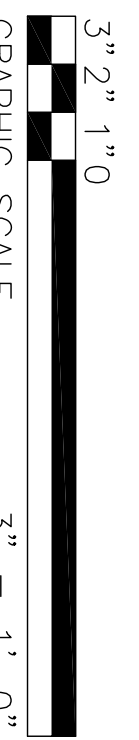
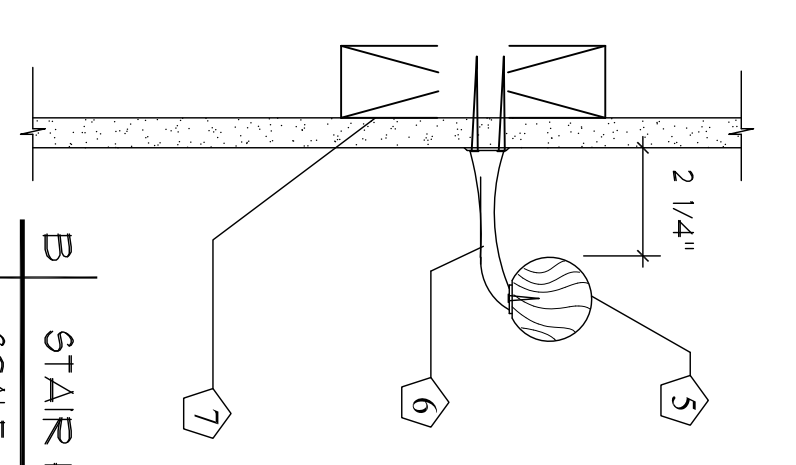


KEYED NOTES

- 1/2" DIA HANDRAIL - SEE DETAIL B
- 1 1/2" X 3/4" OAK HANDRAIL
- BRASS BRACKET & 3/8" MAX OC INTO SOLID BLOCKING TOP OF RAIL 1'-0" ABOVE FINISH FLOOR LINE. RAIL ENDS BEYOND END OF RAILING RETURN TO WALL 1/8" FROM RAIL OR CHANGE IN DIRECTION (SCREWS INCLUDED)
- 2x6 SOLID BLOCKING
- STAIR WIDTH - STUD TO STUD
- STAIR #1 - 3/4"
- UNIT 205, 206, 207 INTERNAL STAIRS 3'-4"
- TRUSS RIBS
- FLOOR 1/2" DIA. 2x4 RIBS
- TRUSS RIBS
- MAX RIBS @ 1'-0"
- MAX RIBS @ 1'-0"



- KITCHEN & BATHROOM NOTES:**
- KITCHEN & BATHROOM ON THE FIRST FLOOR CONFORM TO THE 2009 INTERNATIONAL RESIDENTIAL CODE WITH THE PLUMBING AND MECHANICAL CODES.
 - ELECTRICAL RECEPTACLES AND OPERABLE DEVICES IN TYPE 'B' UNITS SHALL BE LOCATED 48" AFF. AND 5' AFF. MIN.
- KEYED NOTES - TYPE 'B' UNITS**
- 30" X 48" CLEAR SPACE AT SINK
 - 30" X 48" CLEAR SPACE AT RANGE
 - 30" X 48" CLEAR SPACE AT REFRIGERATOR
 - 30" X 48" CLEAR SPACE AT SHOWER
 - 30" X 48" CLEAR SPACE AT LAVATORY
 - 48" X 56" CLEAR SPACE AT WATER CLOSET
 - 48" X 36" ADA COMPLIANT SHOWER ENCLOSURE
 - ADA COMPLIANT LAVATORY
 - ADA COMPLIANT WATER CLOSET
 - LINEN CLOSET W/SHELVING
 - FLOOR DRAIN
 - 2x6 SOLID UDOO BLOCKING AT SEAT LOCATION
 - 2x6 SOLID UDOO BLOCKING AT GRAB BARS
 - 2'-0" X 6'-9" DOOR

