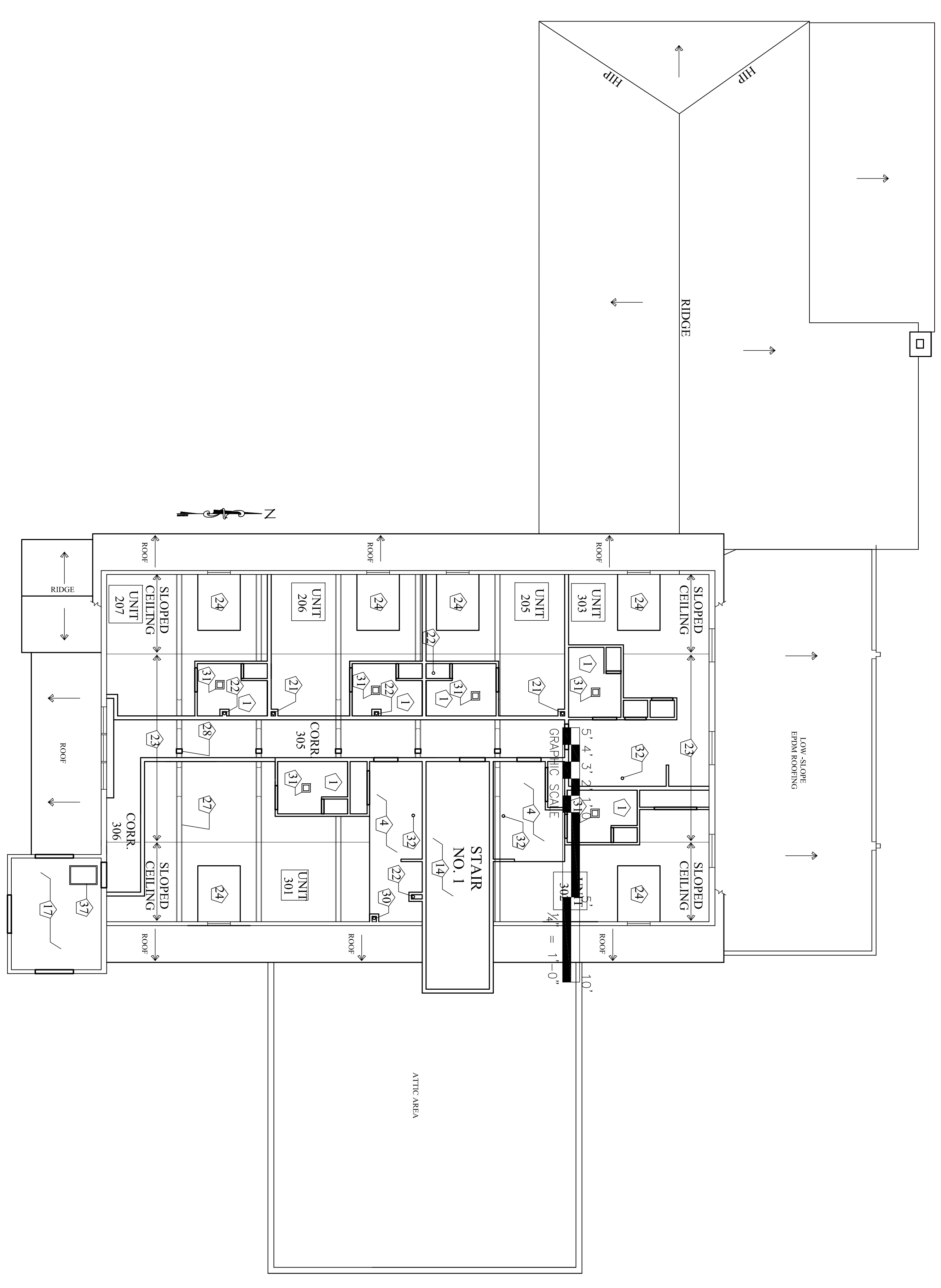


- LEGEND**
- SOFFIT
- GENERAL NOTE**  
1. INSTALL GB CEILINGS ON 1x STRAPPING @ 16" O.C.
- KEYED NOTES**
- 1 BATHROOM GB CEILING AT 7'-6"
  - 2 UNIT GB CEILING AT 8'-4" AFF.
  - 3 WOOD BEADBOARD CEILING AT 12'-9" AFF.
  - 4 GB CEILING AT 7'-6" AFF - STORAGE LOFT ABOVE.
  - 5 WOOD BEADBOARD CEILING AT 12'-5" AFF.
  - 6 GB CEILING AT 12'-9" AFF.
  - 7 GB CEILING AT 8'-9" AFF.
  - 8 BATHROOM EXHAUST FAN - VENTED DIRECTLY THROUGH ROOF.
  - 9 RANGE HOOD EXHAUST FAN - VENTED DIRECTLY THROUGH ROOF.
  - 10 GB CEILING AT 8'-6" AFF.
  - 11 BATHROOM EXHAUST FAN - VENTED WITHIN SOFFIT - SECOND FLOOR PENETRATED.
  - 12 RANGE HOOD EXHAUST FAN - VENTED WITHIN SOFFIT - SECOND FLOOR PENETRATED.
  - 13 GB SOFFIT AT 7'-6" AFF.
  - 14 STAIR NO. 1 - GB CEILINGS - HEIGHTS VARY. SEE DRAWING / IANS FOR SECTION.
  - 15 GB SOFFIT AT 8'-9" AFF.
  - 16 AREA OF FIRST FLOOR RAMP - SEE DRAWING / IANS.
  - 17 STAIR NO. 2 - GB CEILINGS - HEIGHTS VARY. SEE DRAWING I.A. & I.B.A.F. FOR SECTIONS.
  - 18 GB CEILING AT 12'-9" AFF.
  - 19 GB CEILING AT 10'-4" AFF.
  - 20 FLAT GB CEILING AT 10'-10" AFF.
  - 21 POWDER ROOM EXHAUST FAN - VENTED WITHIN SOFFIT - SECOND FLOOR OF UNIT. CONTINUES THROUGH ROOF. NO RATED ASSEMBLIES PENETRATED.
  - 22 RANGE HOOD EXHAUST FAN - VENTED UP THROUGH NON-RATED SECOND FLOOR OF UNIT. CONTINUES THROUGH PENETRATED ASSEMBLIES.
  - 23 DASHED LINE INDICATES SLOPED FLAT CEILING. FLAT GB CEILING AT 12'-6" AFF.
  - 24 DORMER CEILING - GB AT 7'-8" AFF.
  - 25 TRUSS - BOTTOM CHORD OF TRUSS AT 9'-6" AFF. (TYPICAL OF 5 TRUSSES).
  - 26 TRUSS BRACKET.
  - 27 TRUSS - TOP CHORD OF TRUSS. BOTTOM OF TOP CHORD AT 11'-10" AFF. (TYPICAL OF 5 TRUSSES).
  - 28 CENTER POST OF TRUSS. (TYPICAL OF 5 TRUSSES).
  - 29 POWDER ROOM EXHAUST FAN - VENTED WITHIN SOFFIT - SECOND FLOOR RATED FLOOR CEILING ASSEMBLY NOT PENETRATED.
  - 30 BATHROOM EXHAUST FAN - VENTED UP THROUGH NON-RATED SECOND FLOOR OF UNIT. CONTINUES THROUGH PENETRATED ASSEMBLIES.
  - 31 BATHROOM EXHAUST FAN - VENTED UP THROUGH ROOF. NO RATED ASSEMBLIES PENETRATED.
  - 32 RANGE HOOD EXHAUST FAN - VENTED UP THROUGH ROOF. NO RATED ASSEMBLIES PENETRATED.
  - 33 LINE INDICATES AREA OF SLOPED CEILING.
  - 34 RECESSED DOWNLIGHTS IN PORCH CEILING.
  - 35 BEADBOARD CEILING.
  - 36 2" x 3/8" LOCKABLE INSULATED ATTIC HATCH.
  - 37 2" x 3/8" LOCKABLE INSULATED 1 HR. RATED ATTIC HATCH.



**OWNER**  
HARDYPOND DEVELOPMENT, LLC  
7 TEE DRIVE  
Portland, Maine 04103

**ARCHITECT**  
SHIELDS ARCHITECTURE  
CUMBERLAND, MAINE  
(207) 776-8926

**PROJECT**  
PLEASANT AVENUE  
PORTLAND, MAINE

Date: 2/3/16  
Scale: 1/8" = 1'-0"

**DRAWING**  
REFLECTED CEILING  
PLANS

**A-11**