

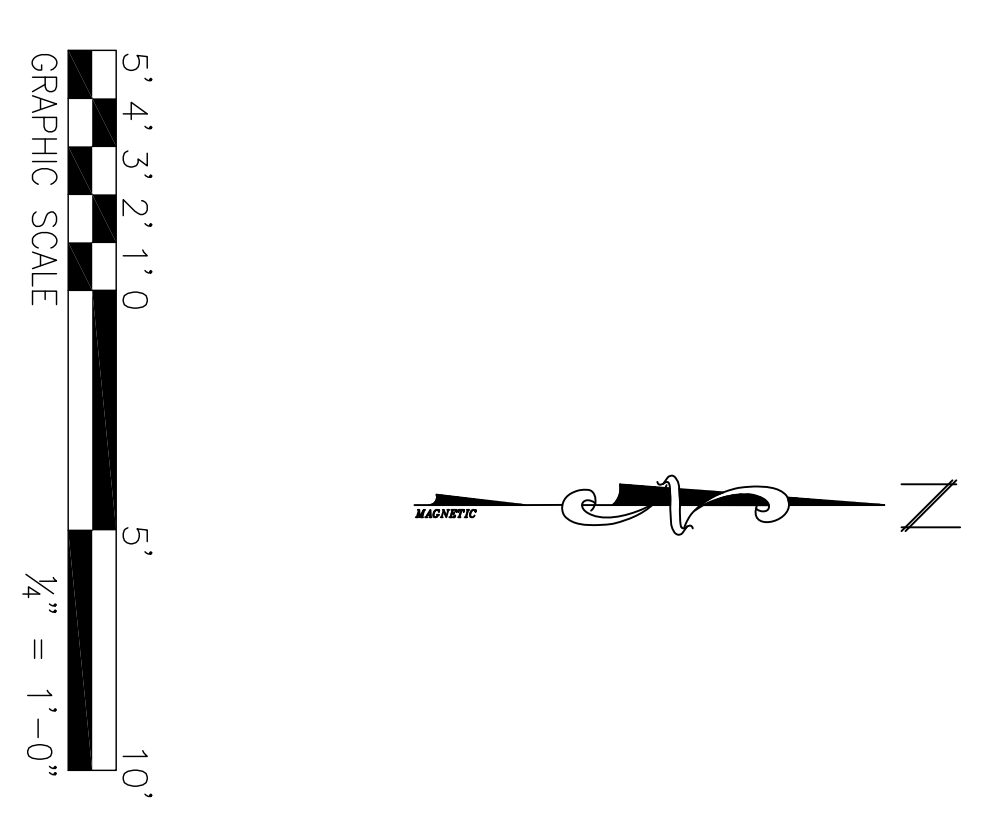
GENERAL DEMOLITION NOTES:
 1. DEMOLITION IS NOT LIMITED TO WORK SHOWN ON THIS SHEET. THE CONTRACTOR IS RESPONSIBLE FOR ANY AND ALL DEMOLITION OR REMOVAL REQUIRED TO IMPLEMENT THIS WORK.
 2. MECHANICAL & ELECTRICAL SUBCONTRACTORS TO CUT & TERMINATE W/ CODE.
 3. G.C. TO DEMO & DISPOSE OF ALL TERMINATED ELECTRICAL & MECHANICAL.

LEGEND
 =====
 WALL OR ITEM TO BE REMOVED

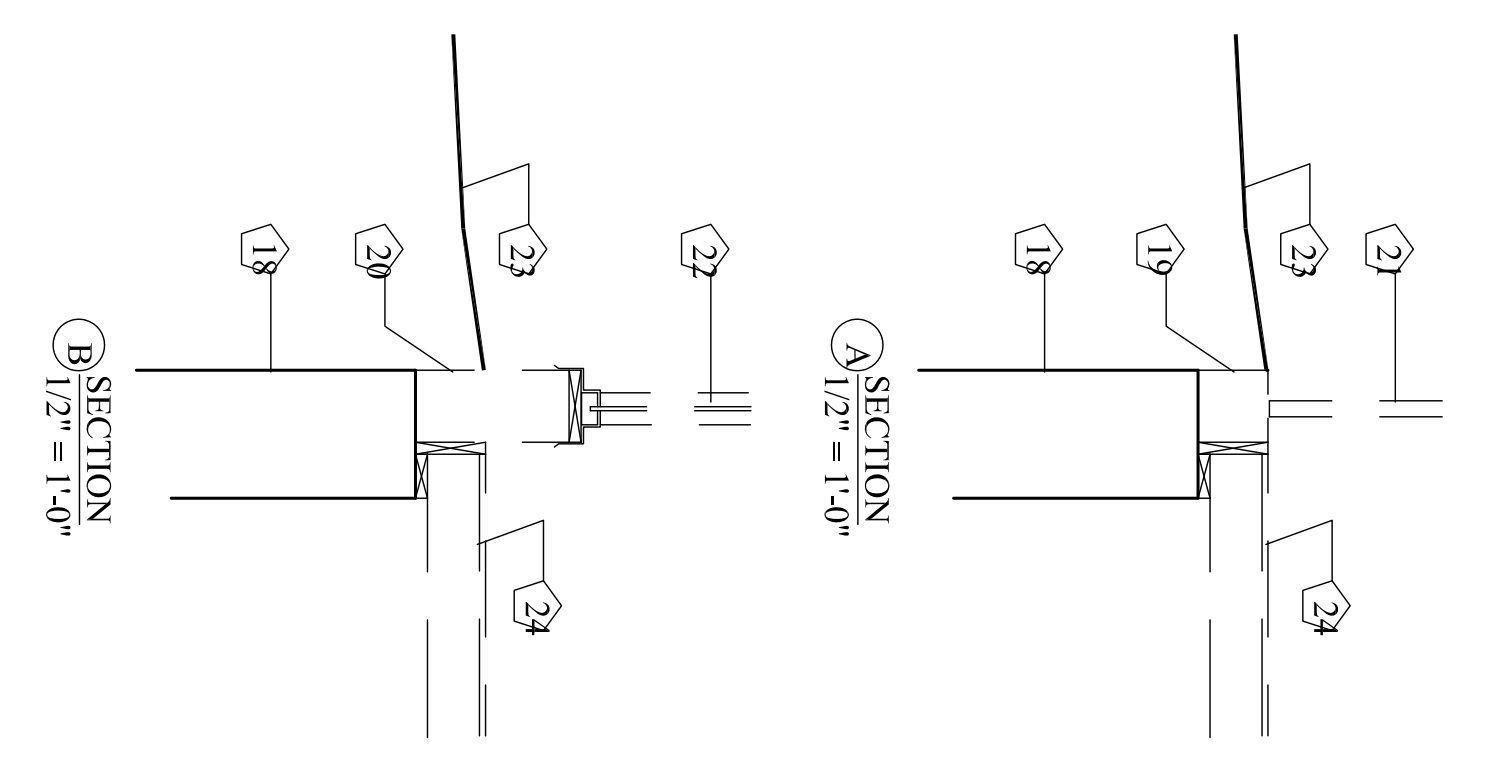
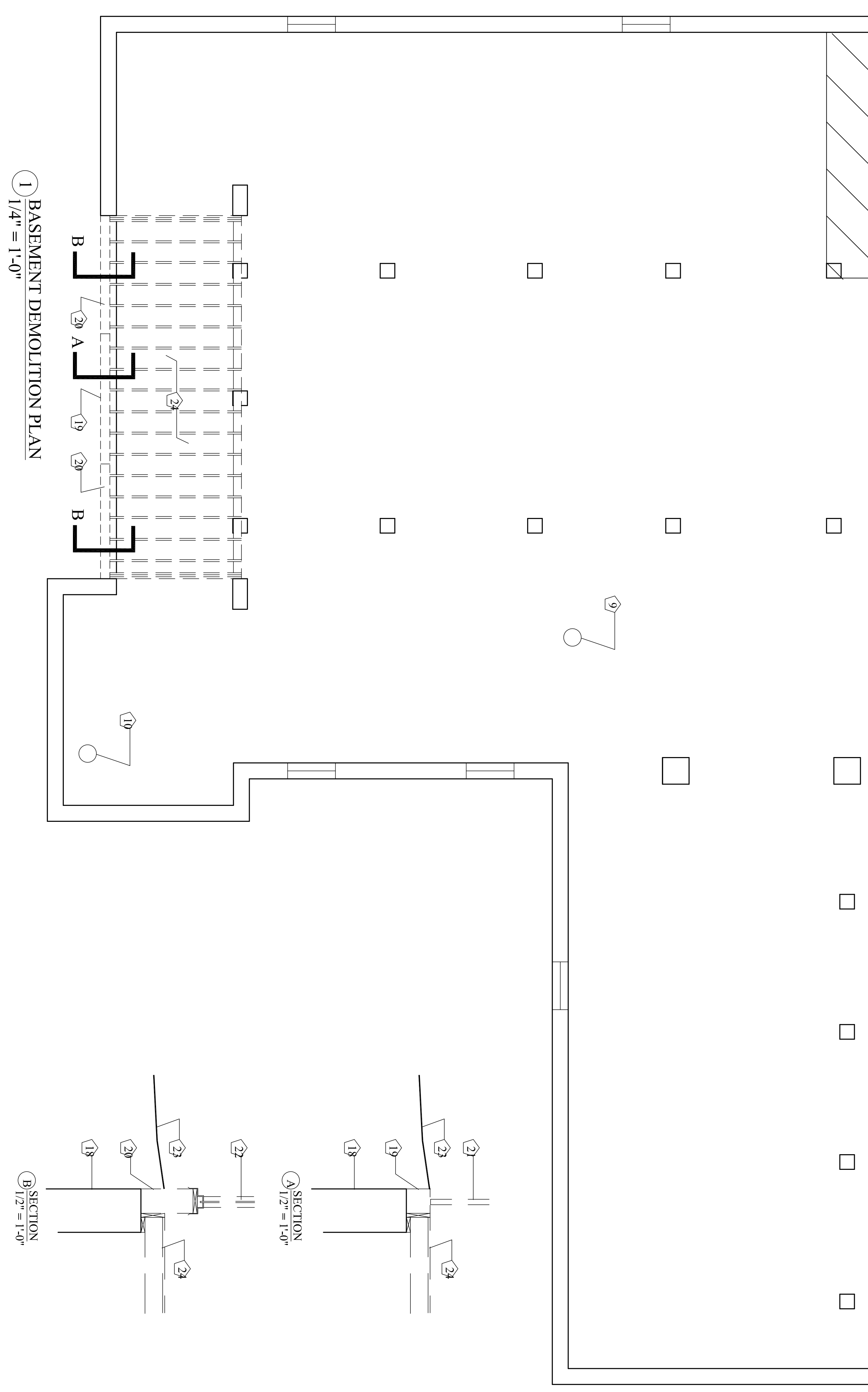
GROSS HATCHED AREA INDICATES AREA OF EXISTING CONCRETE FLOOR REMAINDER OF BASEMENT FLOOR IS DIRT.
 BRICK COLUMN.

KEYED NOTES

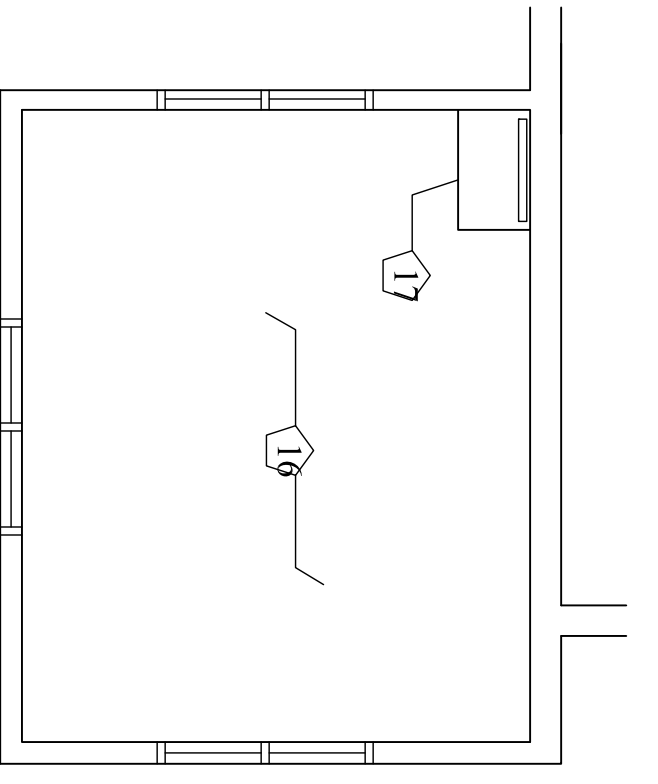
- ① NOT USED.
- ② DITCH.
- ③ GROSS HATCHED AREA INDICATES EXISTING CONCRETE FLOOR REMAINDER OF BASEMENT FLOOR IS DIRT.
- ④ WOOD STAIRS TO BE REMOVED.
- ⑤ BRICK CHIMNEY - TO BE REMOVED ABOVE FIRST FLOOR LEVEL. TO REMAIN IN BASEMENT.
- ⑥ GAS FIRED BOILER & WATER HEATER - REMOVE.
- ⑦ FLOOR FRAMING - TO BE REMOVED BOTTOM OF JOISTS @ 8'-7 1/2" AFF.
- ⑧ EXISTING OIL TANKS - REMOVE.
- ⑨ EXISTING WATER ENTRY - TO BE REMOVED WITH MECHANICAL CONTRACTOR.
- ⑩ EXISTING SEWER OUTGO - COORDINATE WITH MECHANICAL CONTRACTOR.
- ⑪ EXISTING ELECTRICAL SERVICE PENETRATIONS TO BE REMOVED WITH ELECTRICAL CONTRACTOR.
- ⑫ EXISTING WOOD STAIRS - REMOVE.
- ⑬ TOWER FIRST FLOOR ELEVATION- 74'-5 1/2" - FLOOR TO BE REMOVED.
- ⑭ TOWER SECOND FLOOR ELEVATION 83'-2 1/2" - FLOOR TO BE REMOVED.
- ⑮ TOWER THIRD FLOOR ELEVATION 95'-6 1/2" - FLOOR TO BE REMOVED.
- ⑯ TOWER FOURTH FLOOR ELEVATION 108'-1 1/2" - FLOOR TO REMAIN.
- ⑰ FLOOR OPENING FOR EXISTING LADDER.
- ⑱ FOUNDATION TO REMAIN.
- ⑲ CONCRETE FOUNDATION - REMOVE.
- ⑳ BRICK FOUNDATION - REMOVE DOWN TO LEVEL OF EXISTING FOUNDATION.
- ㉑ ENTRY DOORS, FRAME - REMOVE.
- ㉒ GLASS WINDOWS, FRAME - REMOVE.
- ㉓ GRADE.
- ㉔ FLOOR & FRAMING - REMOVE.



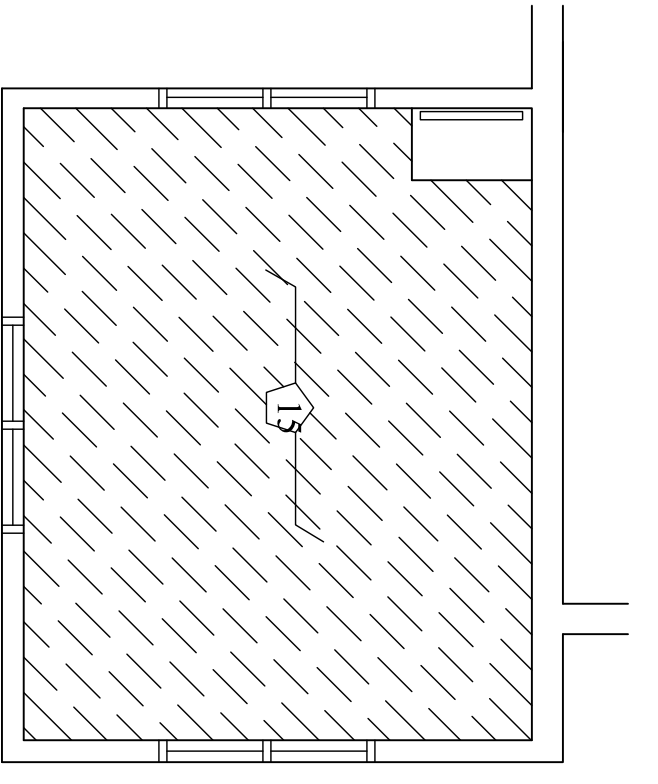
① BASEMENT DEMOLITION PLAN
 1/4" = 1'-0"



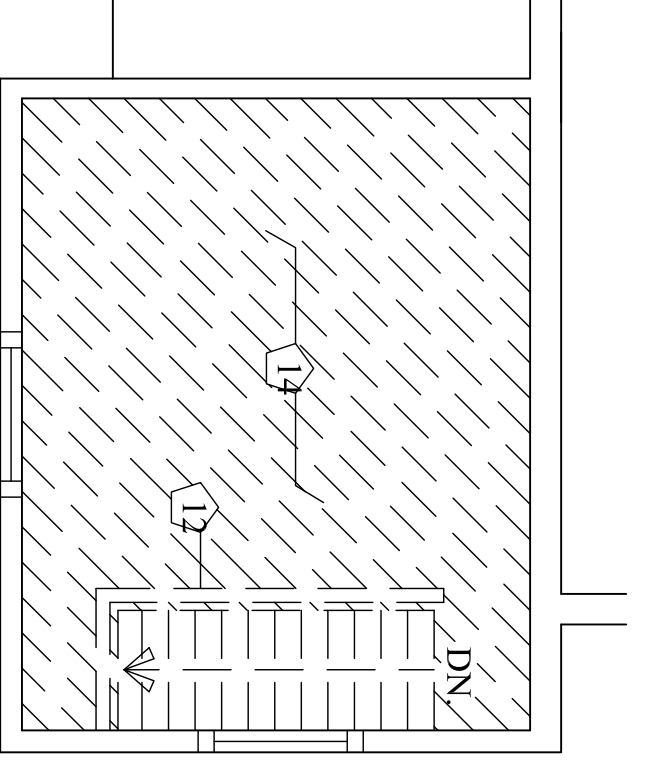
⑤ TOWER - 4th FLR DEMO. PLAN
 1/4" = 1'-0"



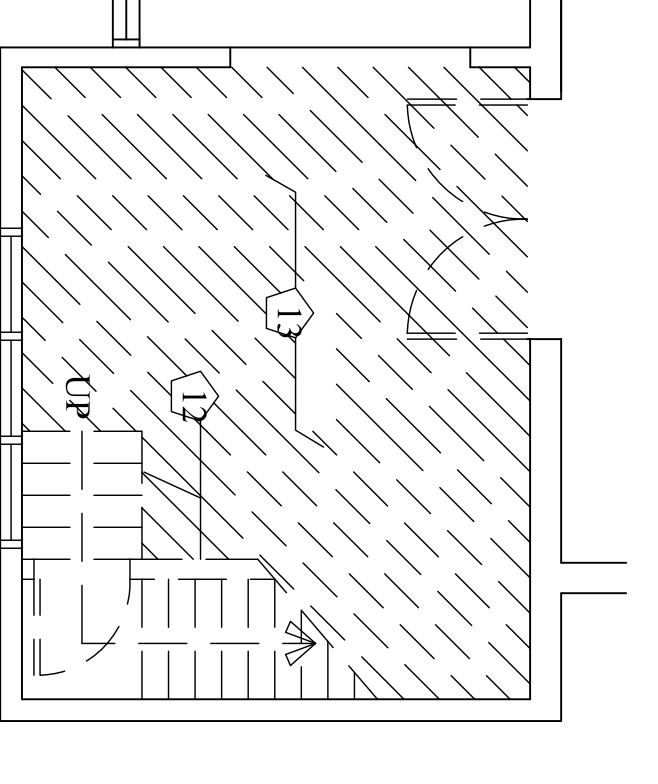
④ TOWER - 3rd FLR DEMO. PLAN
 1/4" = 1'-0"



③ TOWER - 2nd FLR DEMO. PLAN
 1/4" = 1'-0"



② TOWER - 1st FLR DEMO. PLAN
 1/4" = 1'-0"



BASEMENT & TOWER DEMOLITION PLANS

Date: 2/3/16
 Project: PLEASANT AVENUE PORTLAND, MAINE
 Scale: 1/4" = 1'-0"

Architect: SHIELDS ARCHITECTURE
 CUMBERLAND, MAINE (207) 776-8926

Owner: HARDYPOND DEVELOPMENT, LLC
 7 TEE DRIVE
 Portland, Maine 04103

