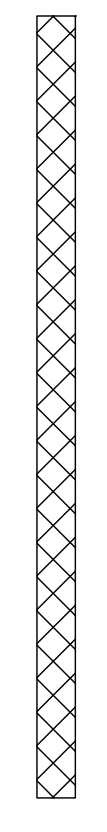


LEGEND

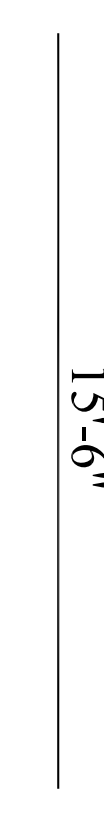
1 HOUR RATED WALL



1/2 HOUR RATED WALL



EGRESS DISTANCE

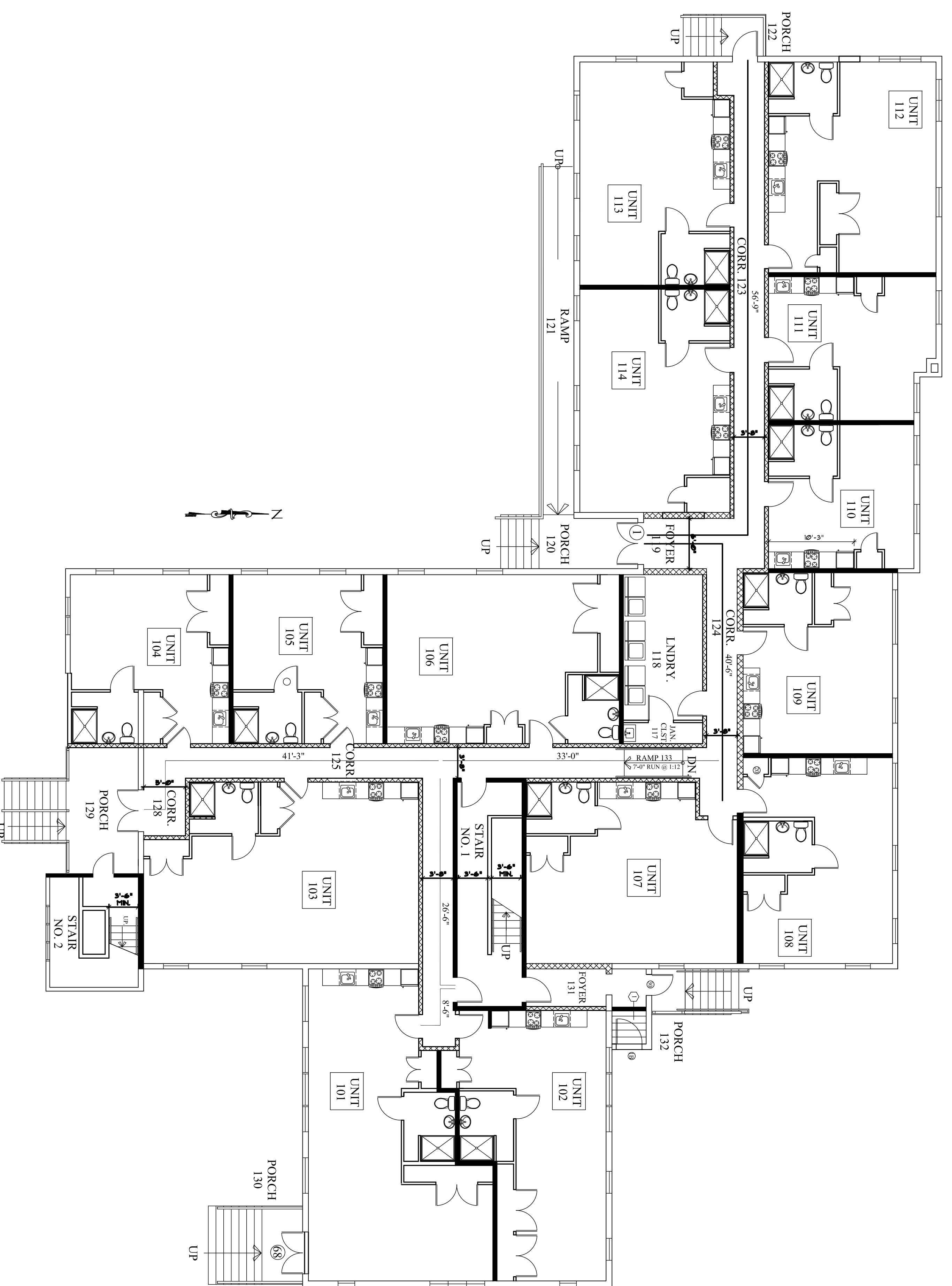
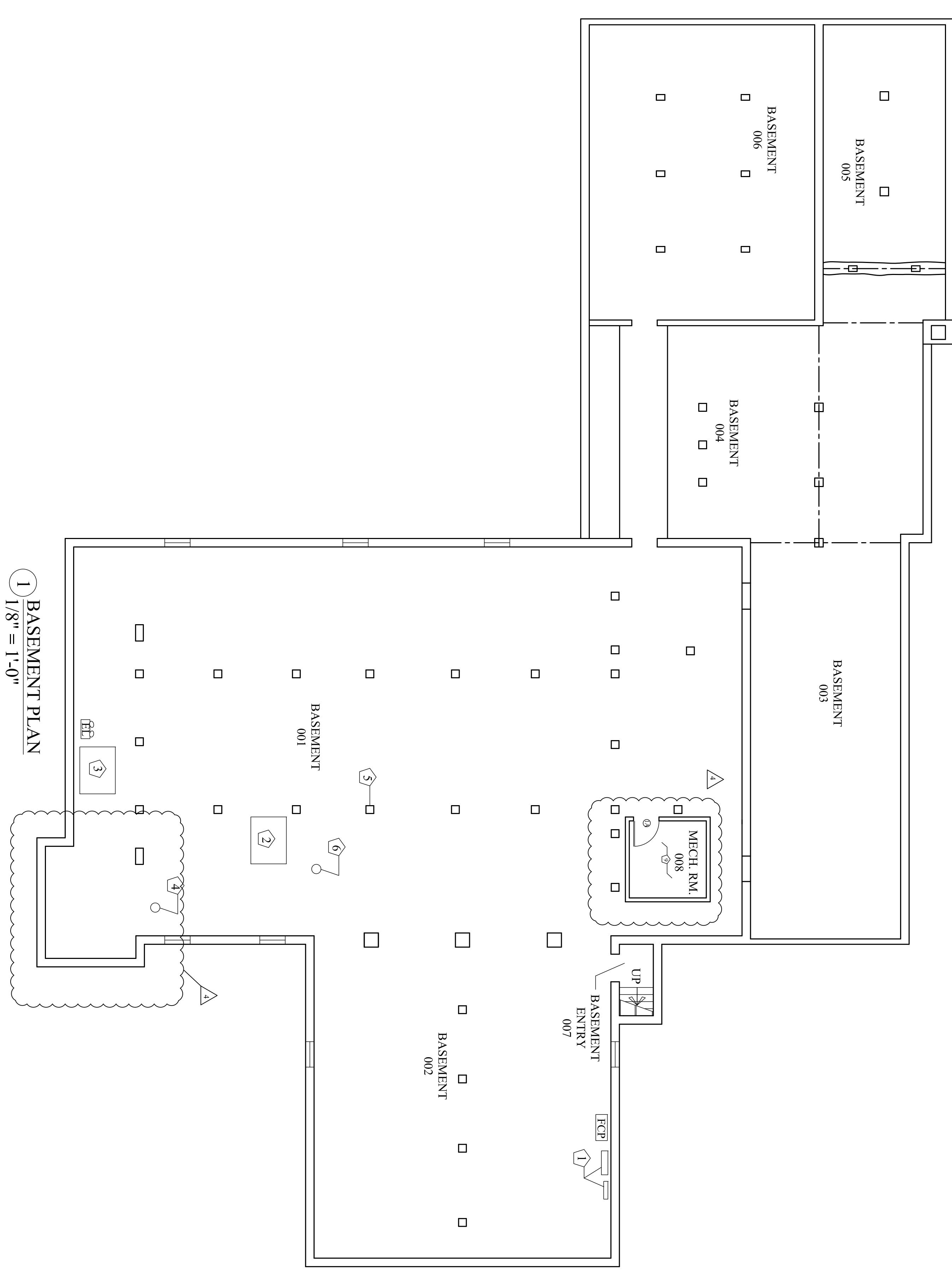
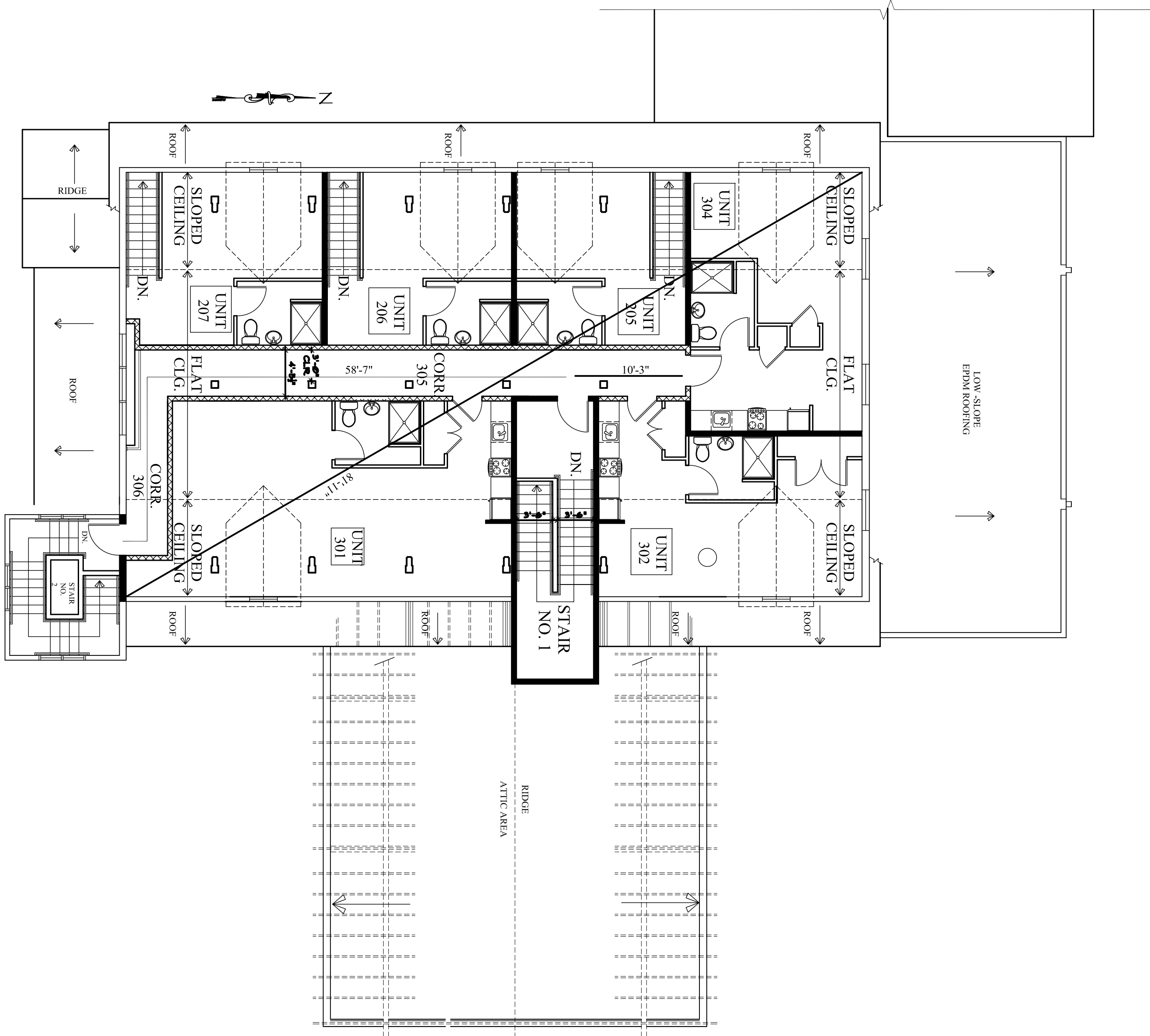
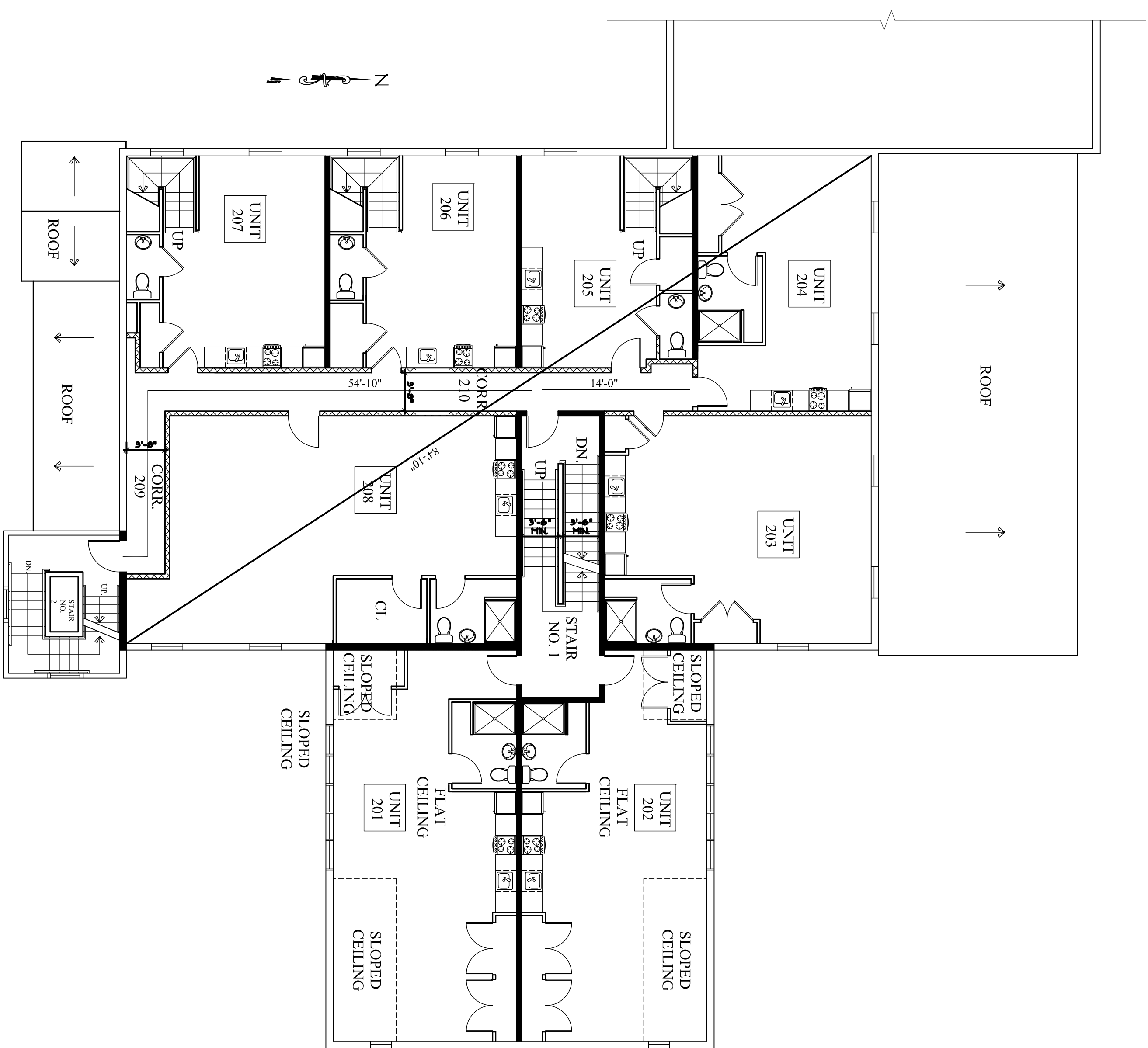


LIFE SAFETY NOTES:

1. SEE COVER SHEET FOR 2009 NFPA 101 AND 2009 IBC CODE ANALYSIS.
2. BUILDING IS FULLY SPRINKLED PER NFPA 13R.
3. SEE DRAWING A-16 FIRE ALARM, SMOKE DETECTORS, CO DETECTORS PLANS FOR DEVICE LOCATIONS.

KEYED NOTES

- 1 ELECTRICAL PANELS.
- 2 GAS BOILER & WATER HEATER.
- 3 SPRINKLER ENTRANCE.
- 4 SEWER OUTGO.
- 5 BRICK COLUMN (TYP.)
- 6 DOMESTIC WATER ENTRANCE.



1 BASEMENT PLAN
1/8" = 1'-0"



Owner
HARDYPOND DEVELOPMENT, LLC
7 TEE DRIVE
Portland, Maine 04103

Architect
SHIELDS ARCHITECTURE
CUMBERLAND, MAINE
(207) 776-8926

Scale
1/8" = 1'-0"
Project:
PLEASANT AVENUE
PORTLAND, MAINE

Date: 2/3/16
Revision No.4 - 4/29/16: Mech Rm. 008 added to Basement Plan, Stair No. 2 deleted from Basement Plan.

Drawing
LIFE SAFETY PLANS