

FIRE ALARM SYSTEM LEGEND

FIRE ALARM NOTES:

- PER 2009 IBC 907.5.2.3.4 ALL DWELLING UNITS AND SLEEPING UNITS SHALL BE PROVIDED WITH THE CAPABILITY TO SUPPORT VISIBLE ALARM NOTIFICATION APPLIANCES IN ACCORDANCE WITH ICC A117.1.
- SEE FIRE ALARM SUB-CONTRACTOR'S DOCUMENTS FOR ADDITIONAL INFORMATION & DETAILS.

- FCP** FIRE ALARM CONTROL PANEL
- FSA** FIRE ALARM ANNUNCIATOR PANEL
- KB** KNOX BOX
- PS** PULL STATION
- HS** HORN / STROBE
- H** HORN
- S** SMOKE DETECTOR

SMOKE & CO DETECTOR, EMERGENCY LIGHTING, EXIT SIGN LEGEND

NOTES:

- NOT USED.
- INTERCONNECTION - THE SMOKE ALARMS SHALL BE INTERCONNECTED IN SUCH A MANNER THAT THE ACTIVATION OF ONE ALARM WILL ACTIVATE ALL THE ALARMS IN THE INDIVIDUAL UNIT.

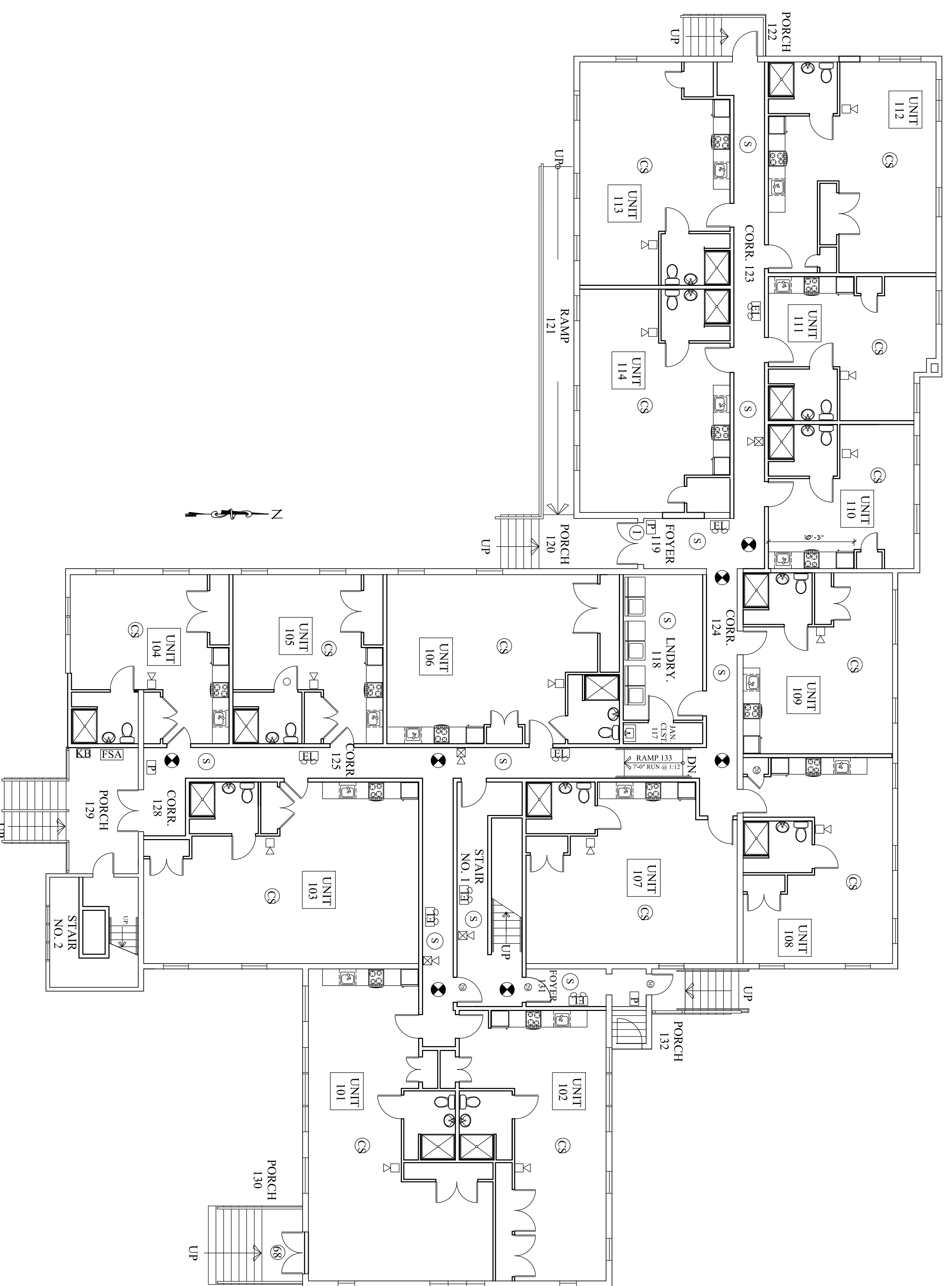
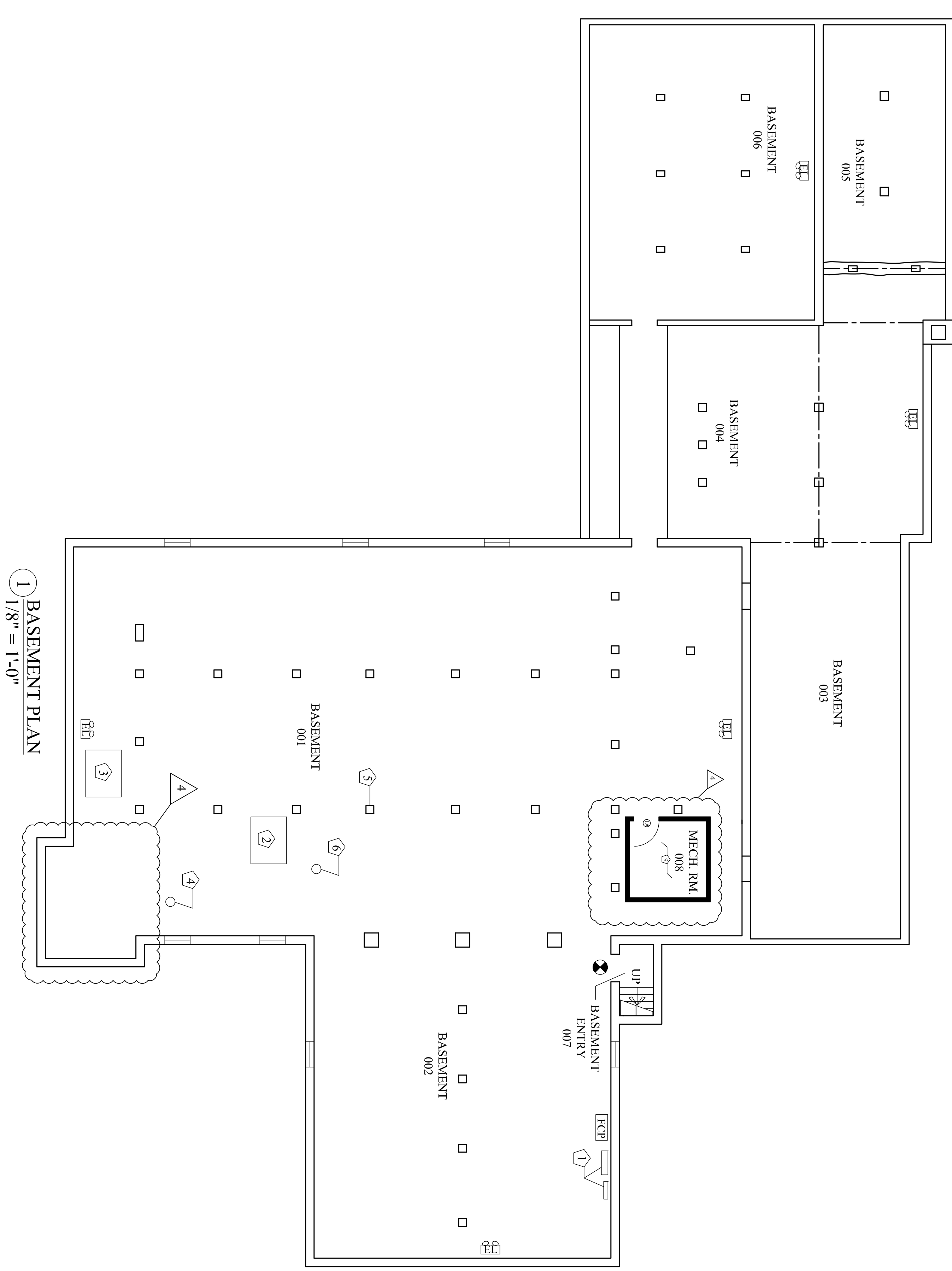
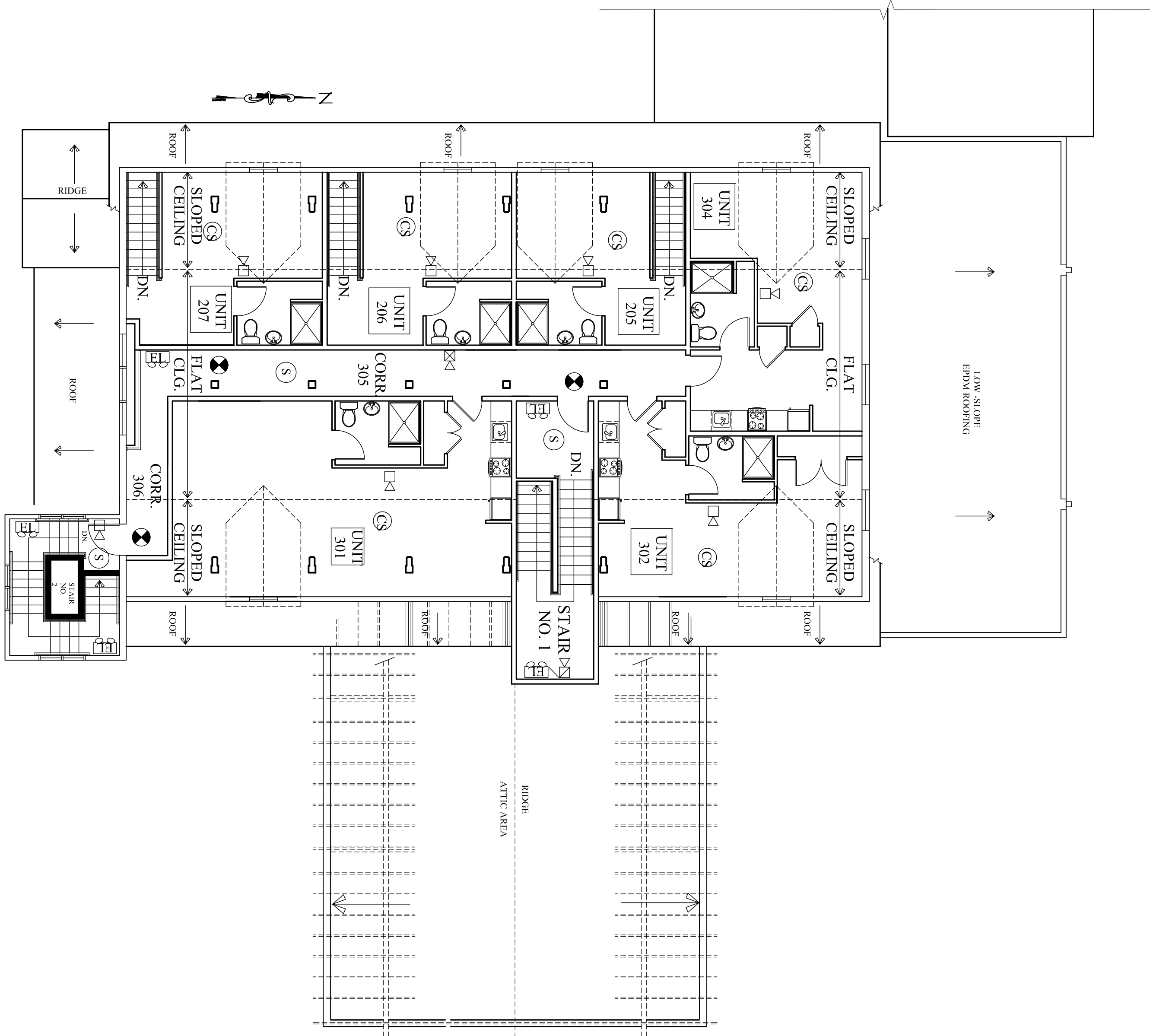
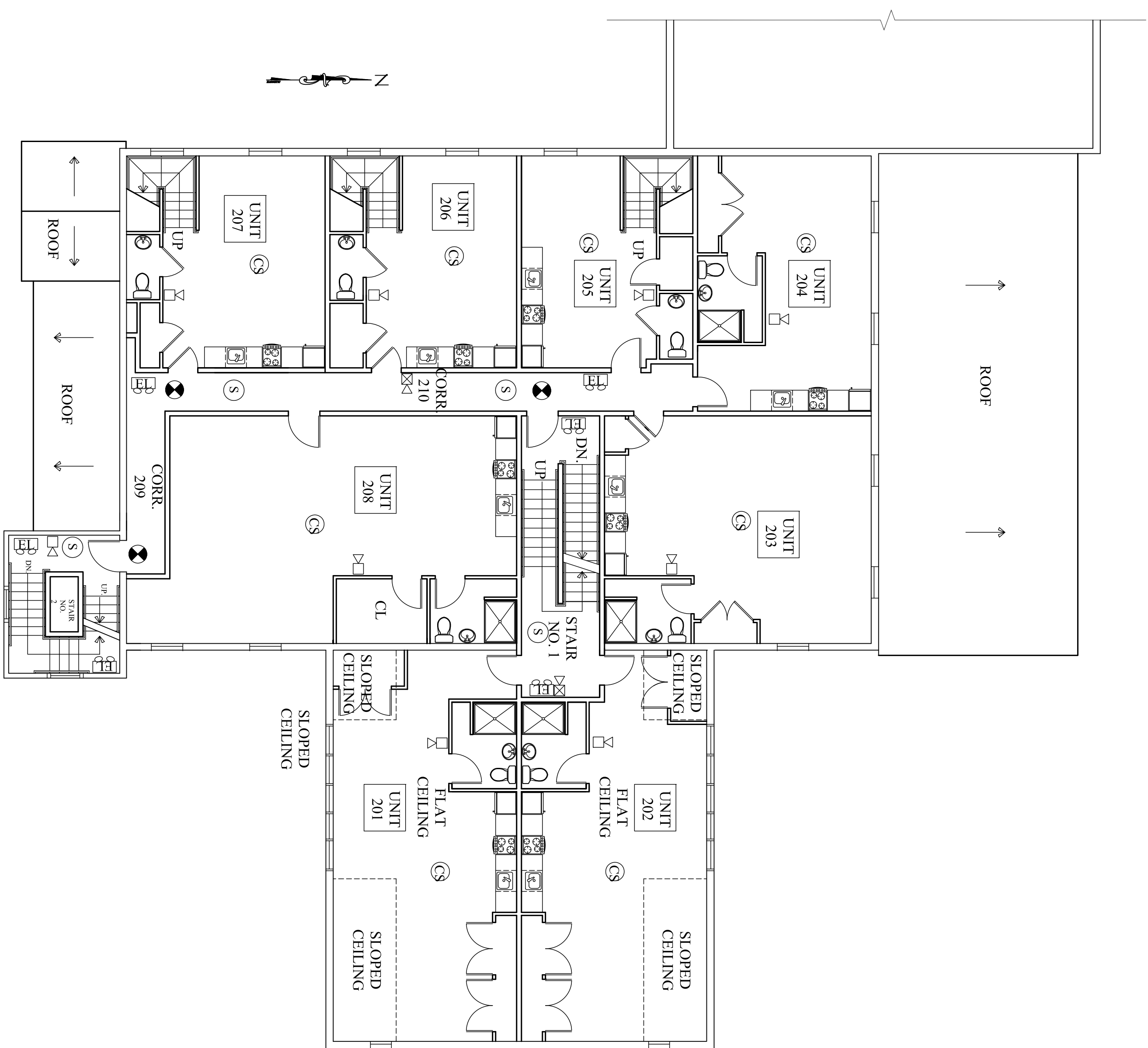
EL SELF CONTAINED EMERGENCY LIGHT W/2 HEADS DUAL-LITE (LED) MODEL LZ651-03L, 65 WATTS FOR 90 MINUTES, COLOR BY ARCHITECT.

EL EXIT LIGHT FIXTURE, UNSWITCHED, DUAL-LITE LX-U-R-W-E OR APPROVED EQUAL.

CS SMOKE & CARBON MONOXIDE DETECTOR - PHOTOELECTRIC TYPE. AUDIO VISUAL NOTIFICATION.

KEYED NOTES

- ELECTRICAL PANELS.
- GAS BOILER & WATER HEATER.
- SPRINKLER ENTRANCE.
- SEWER OUTGO.
- BRICK COLUMN (TYP.).
- DOMESTIC WATER ENTRANCE.



1 BASEMENT PLAN
1/8" = 1'-0"



Owner
HARDYPOND DEVELOPMENT, LLC
7 TEE DRIVE
Portland, Maine 04103

Architect
SHIELDS ARCHITECTURE
CUMBERLAND, MAINE
(207) 776-8926

Scale
1/8" = 1'-0"
Project:
PLEASANT AVENUE
PORTLAND, MAINE

Date: 2/3/16
Revisions: No.4 5/20/16 - mech. Rm. 008 added to Basement Plan and Stair No. 1 deleted from Basement Plan.

Drawing
FIRE ALARM & SMOKE/CO DETECTOR PLANS