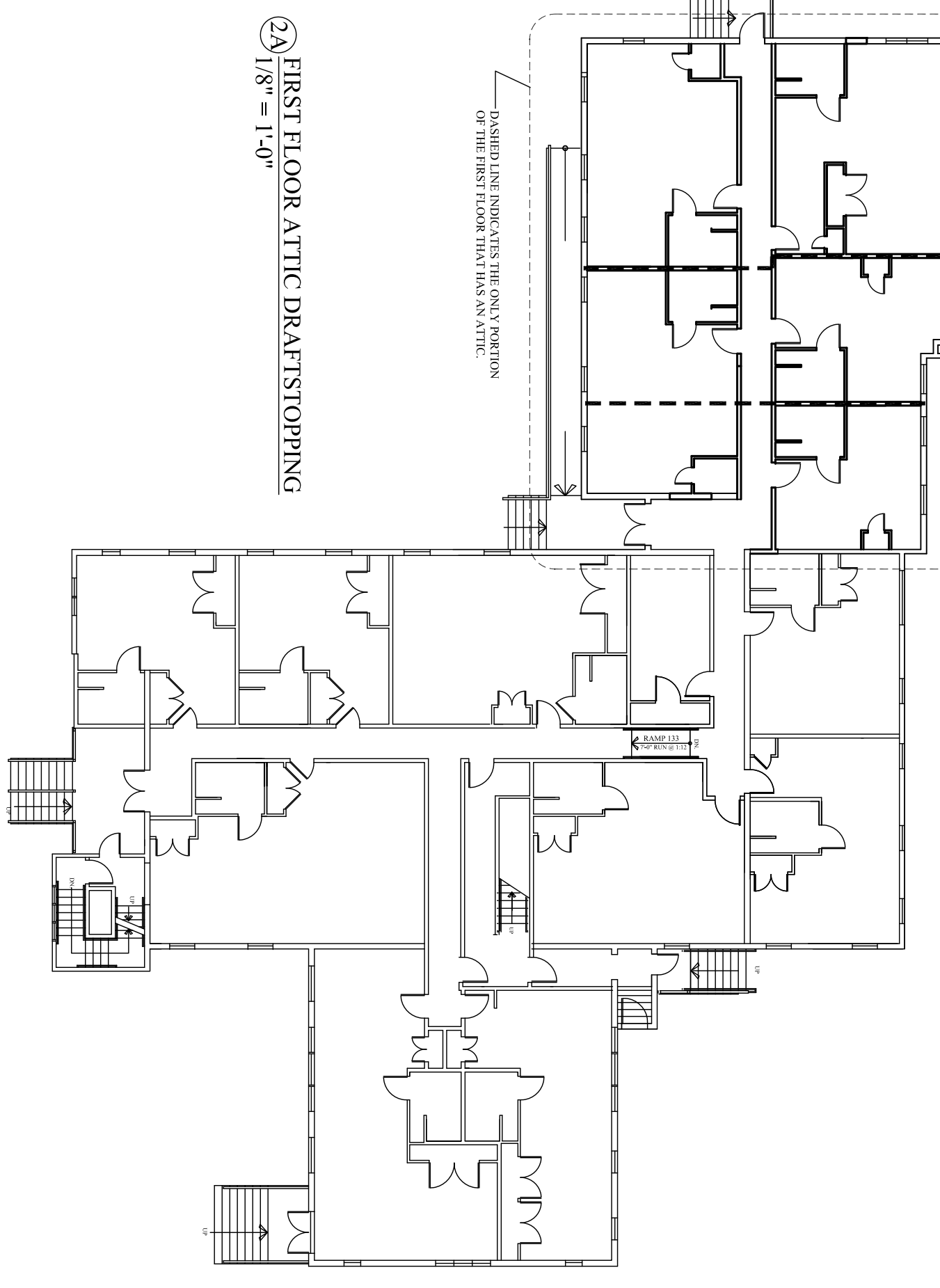


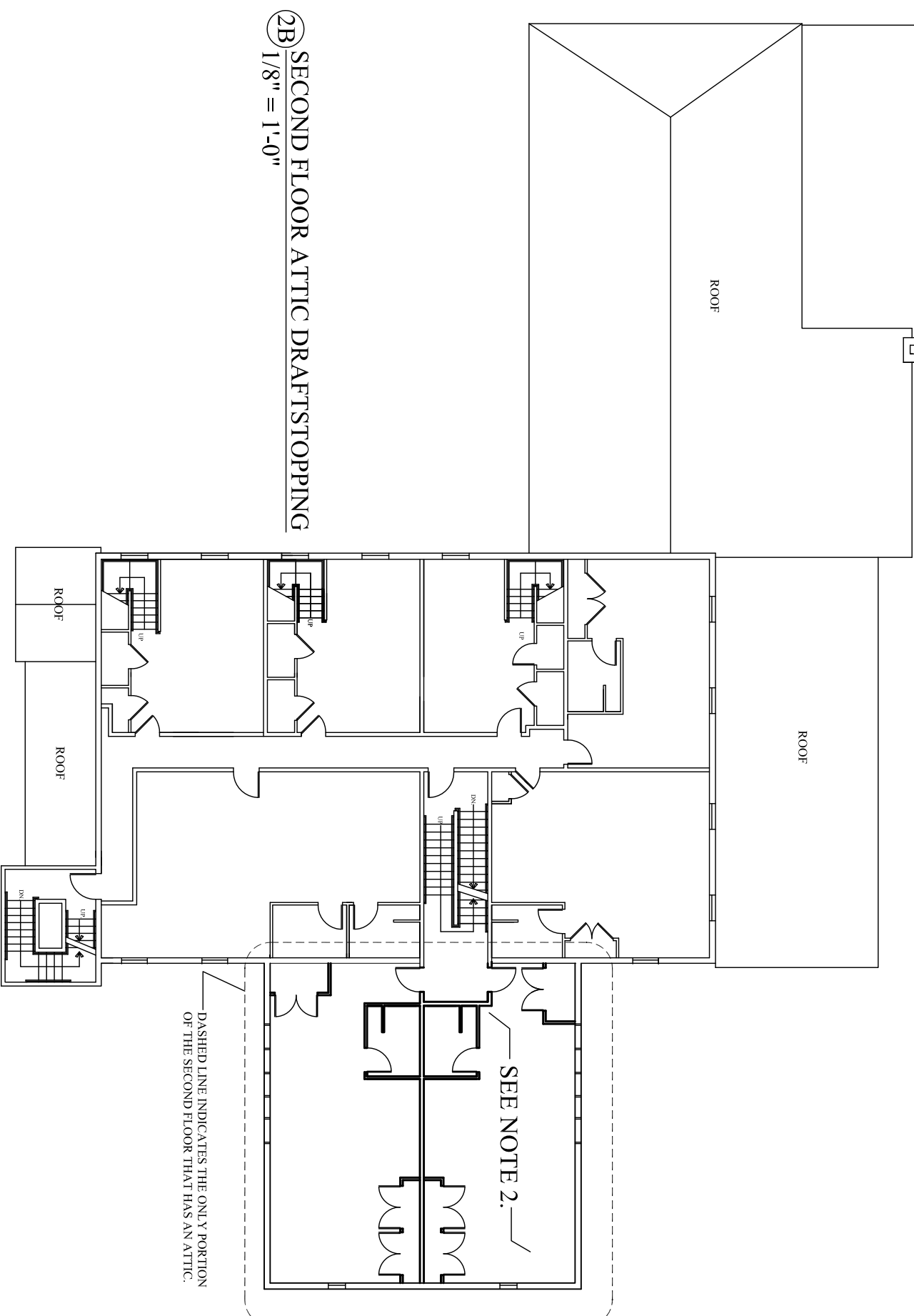
DRAFTSTOPPING

LEGEND
DRAFTSTOPPING

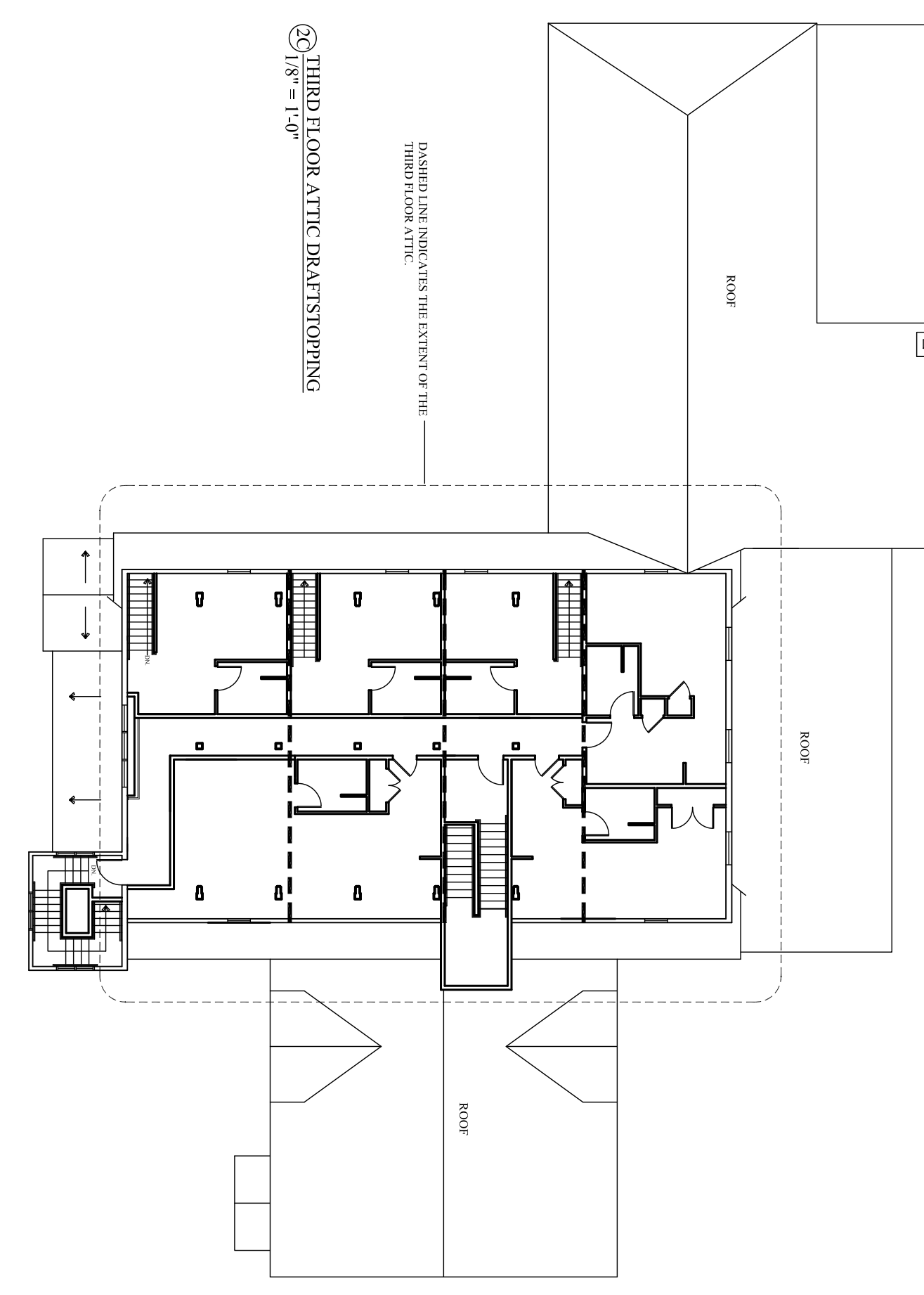
DRAFTSTOPPING NOTES:
1. DRAFTSTOPPING TO BE COINTEGRATED WITH 2x4 @ 24" O.C.
2. DRAFTSTOPPING NOT REQUIRED AT SECOND FLOOR ATTIC PER 2009 IBC SECTION 711.4.2, EXCEPTION 3 - TWO DWELLING UNITS OR FEWER



2A FIRST FLOOR ATTIC DRAFTSTOPPING
1/8" = 1'-0"



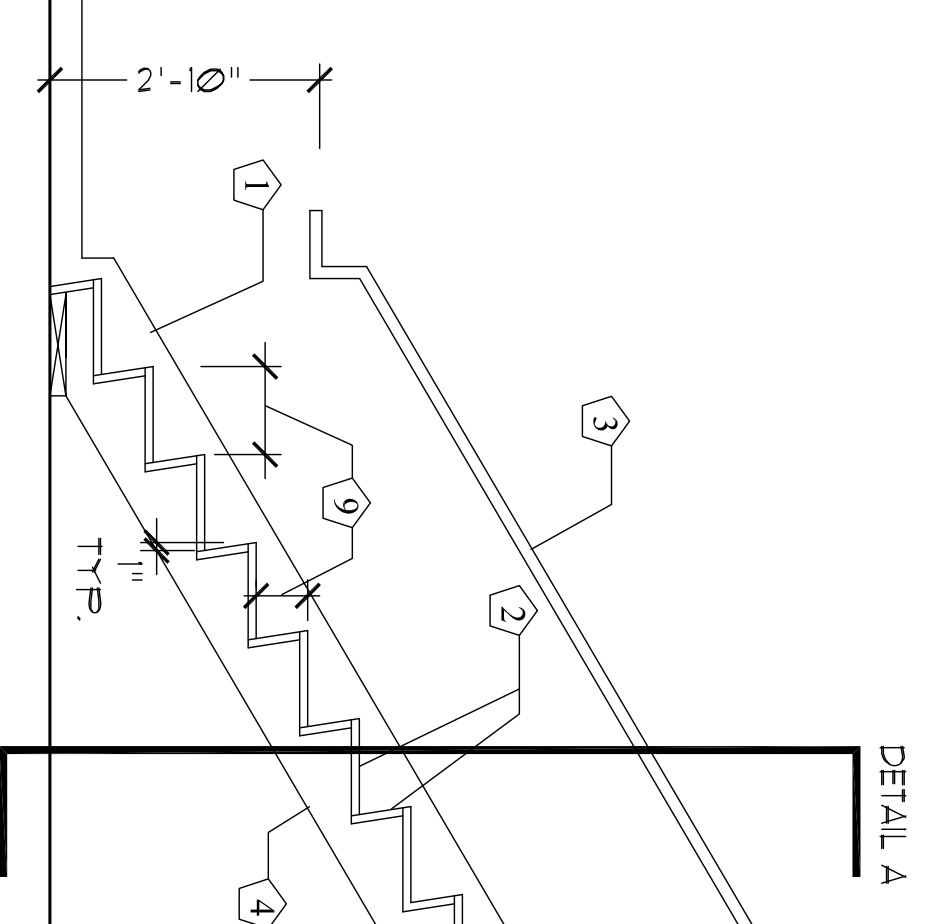
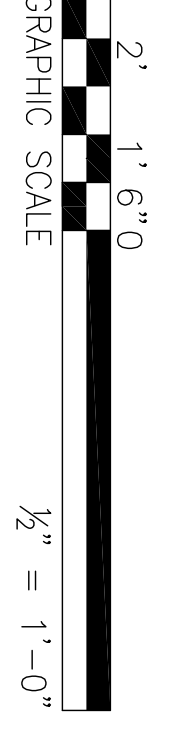
2B SECOND FLOOR ATTIC DRAFTSTOPPING
1/8" = 1'-0"



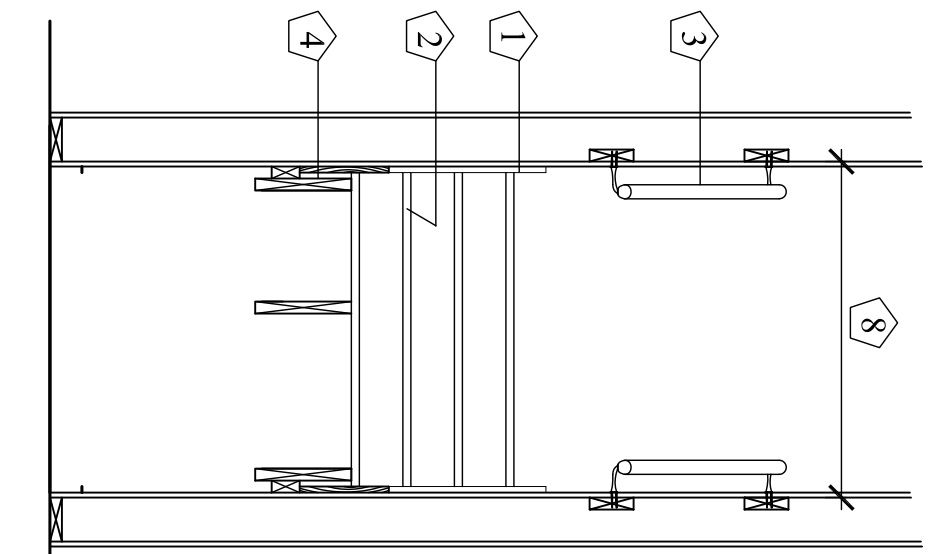
2C THIRD FLOOR ATTIC DRAFTSTOPPING
1/8" = 1'-0"

KEYED NOTES

- 1 1/2" FINISH STRONGER - FPD
- 2 TYPICAL TREAD AND RISER
FLOOR SHEATHING - GUE AND NAIL
2. INTERNAL STAIRS IN UNITS 205, 206, 207, 1" OAK TREADS, 3/4" SOUTHERN PINE RISERS
- 3 1 1/2" DIA HANDRAIL - SEE DETAIL B
- 4 (3) 2X2 CARTRIDGES
- 5 1 1/2" X 3/4" OAK HANDRAIL
- 6 BRASS SOCKET & 3/8" DIA. O.C. W/2" SOLID END OF BALING RETURN TO WALL (3/8" FROM NOSING & LANDING & LIFT OFF 1/8" FROM RAIL OR CHANGE IN DIRECTION (SEE 5 INCLUDED)
- 7 3/8" SOLID BLOCKING
- 8 STRIKE UP/PL. SLOD TO STUD
1. 5/8" X 1" - 3'-9"
- 2. 5/8" X 1" - 3'-6"
- 3. UNIT 205, 206, 207, INTERNAL STAIRS 3'-4"
- 9 TREAD & RISERS
1. 1 1/2" X 3/4" RISER, 1 1/2" TREAD
2. PORTAL 102, 103, 104 - 1 1/2" X 3/4" RISER, 1 1/2" TREAD
3. INTERNAL STAIRS IN UNITS 205, 206, 207 - 1 1/2" X 3/4" RISER, 1 1/2" TREAD
MAX RISER 6" TREAD

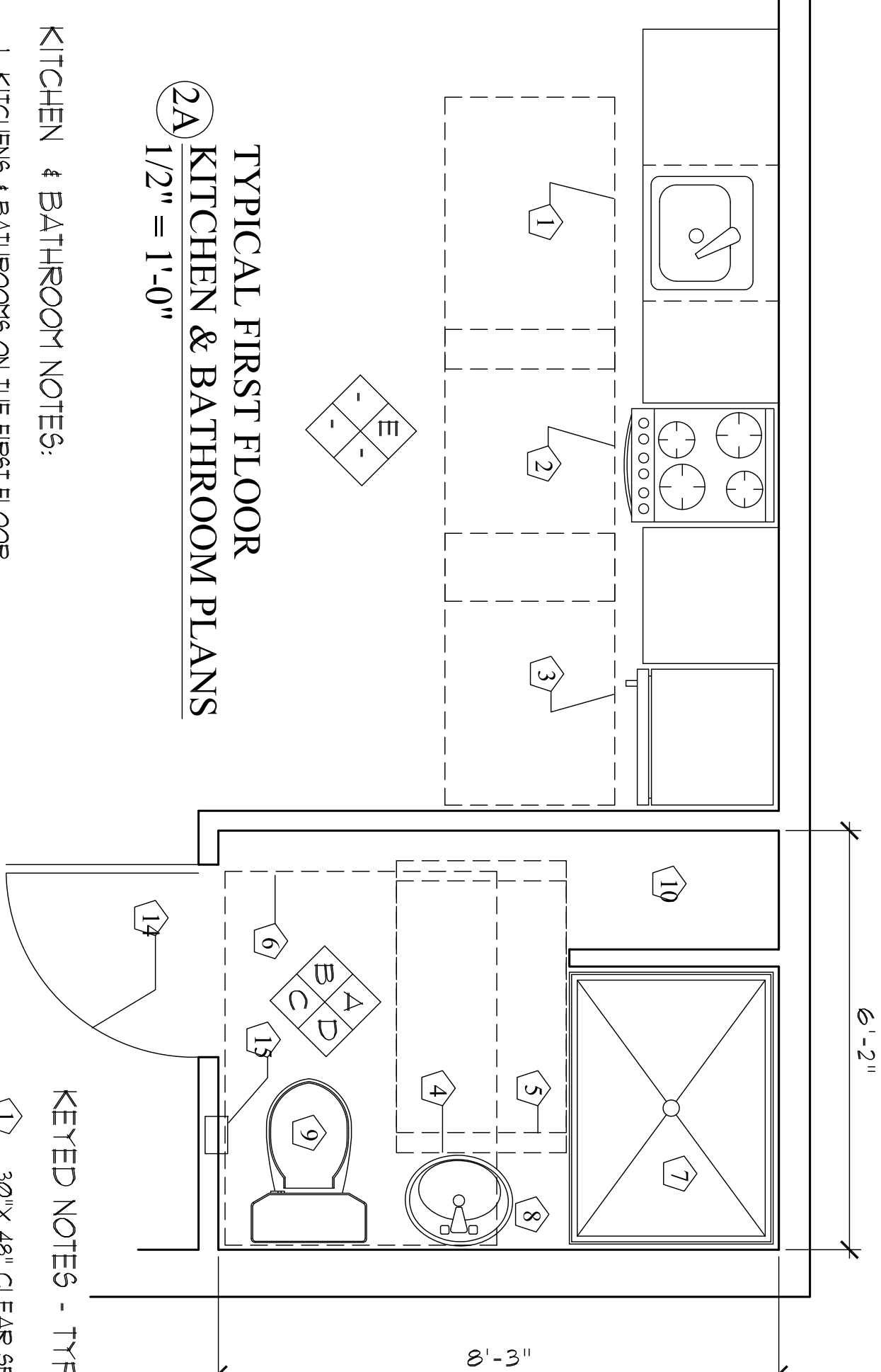


1 TYPICAL STAIR SECTION
1/2" = 1'-0"

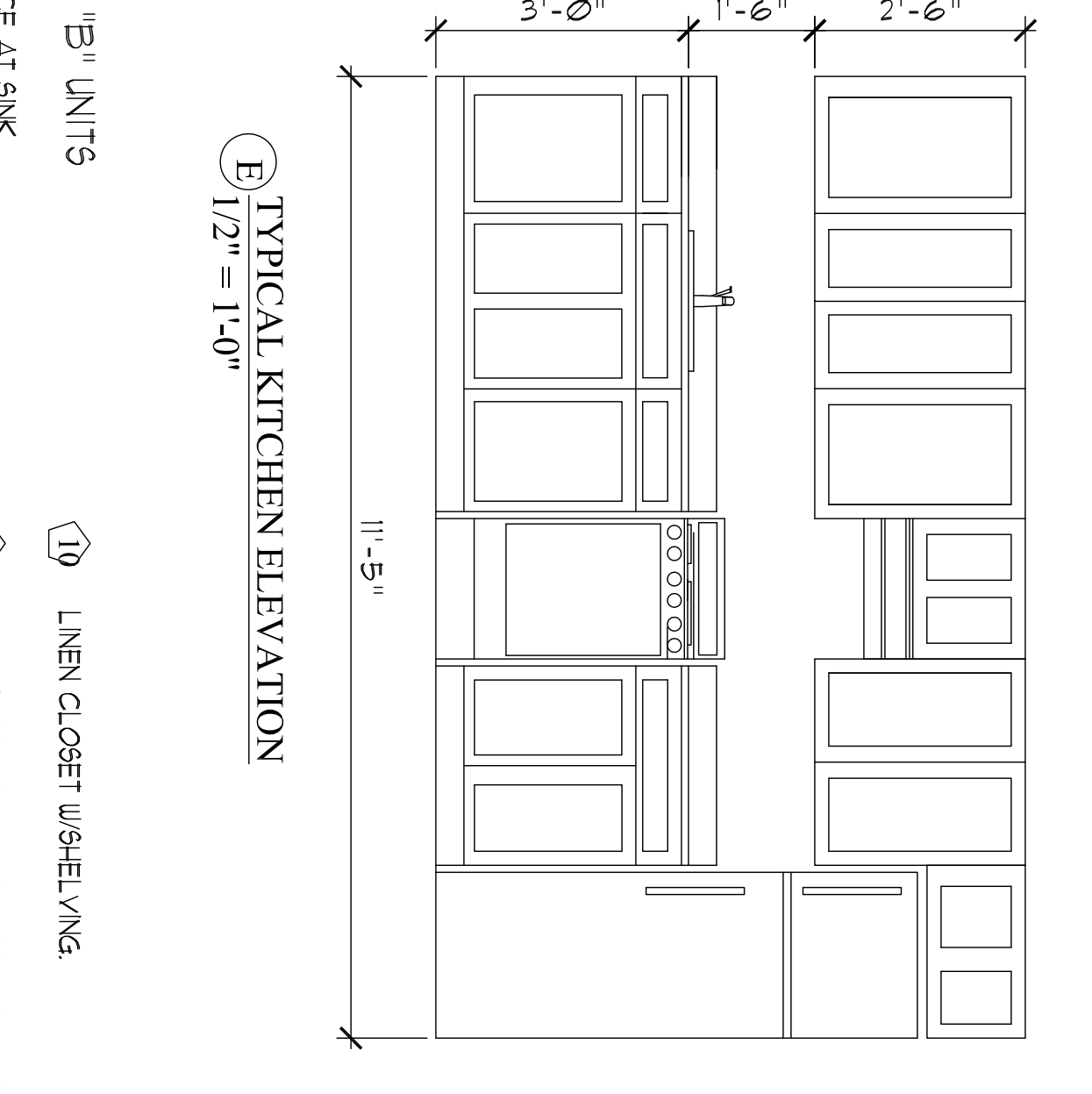


2 STAIR HANDRAIL DETAIL
SCALE: 3/4" = 1'-0"

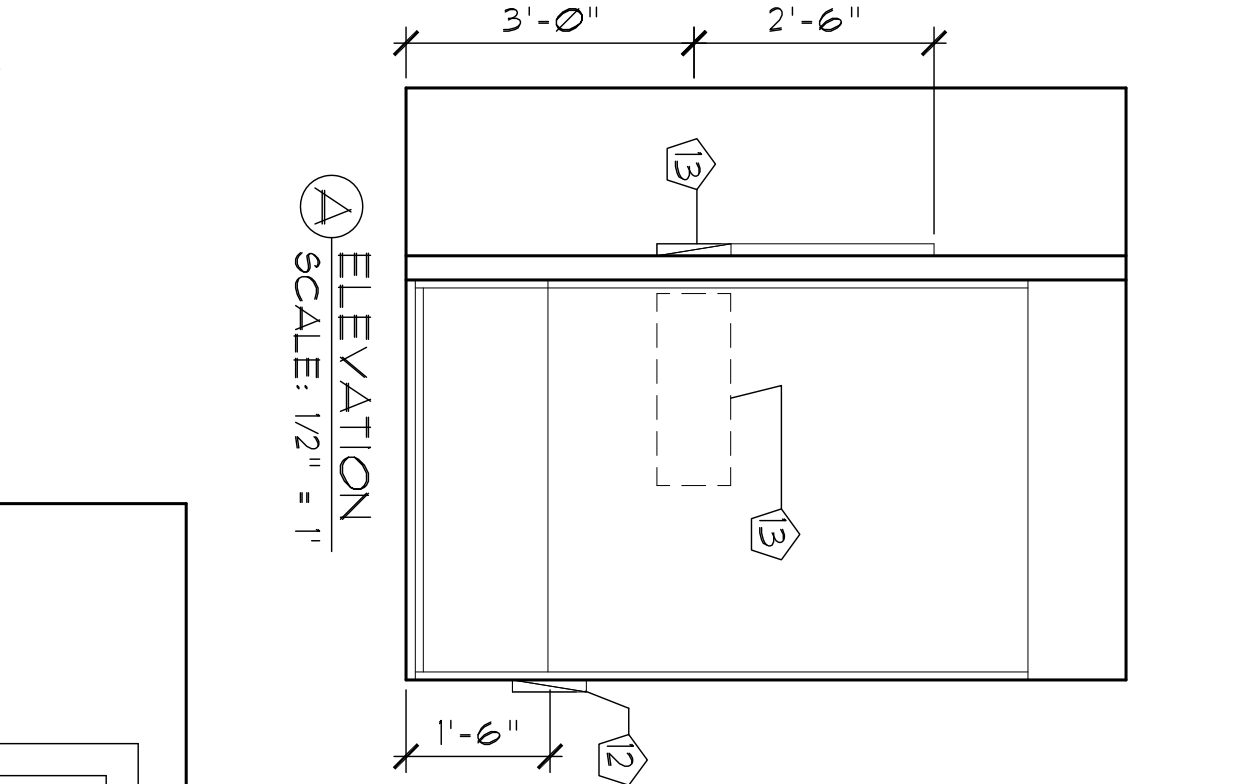
TYPICAL FIRST FLOOR KITCHEN & BATHROOM PLANS
1/2" = 1'-0"



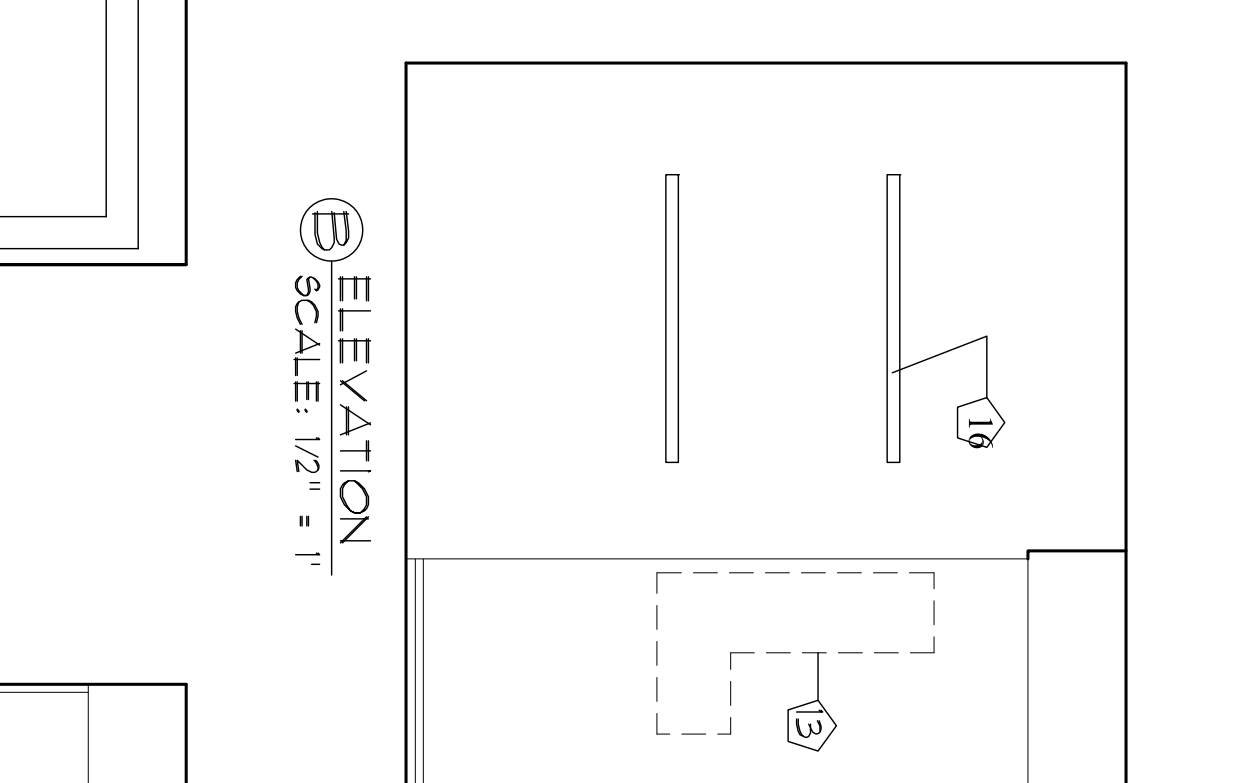
KITCHEN & BATHROOM NOTES:
1. KITCHENS & BATHROOMS ON THE FIRST FLOOR COMPLETE WITH ANSI 2009 ICC ALTI TYPE 'B' UNITS PER THE RAISE HUMAN RIGHTS ACT AND OPERABLE DEVICES IN THE 'B' UNITS SHALL BE LOCATED 44" AFF MAX AND 'B' AFF MIN.



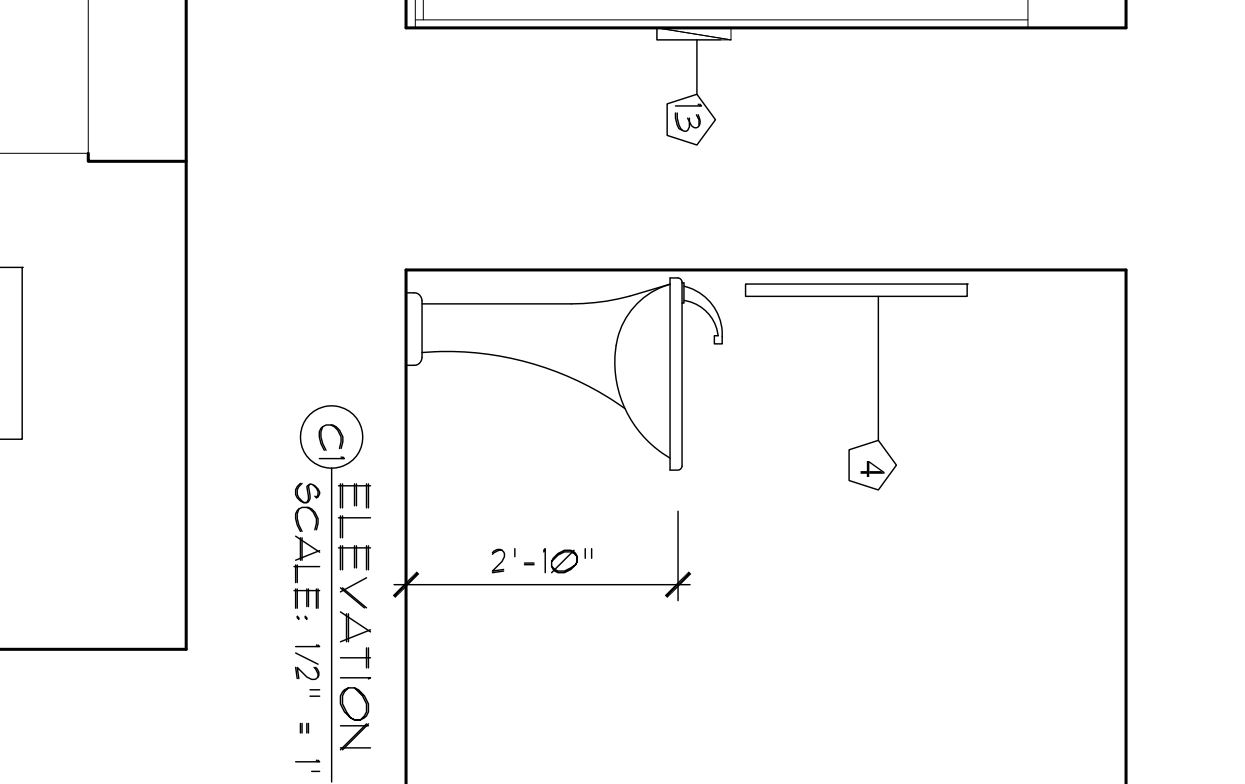
2A TYPICAL KITCHEN ELEVATION
1/2" = 1'-0"



2B TYPICAL KITCHEN ELEVATION
SCALE: 1/2" = 1'



2C TYPICAL KITCHEN ELEVATION
SCALE: 1/2" = 1'

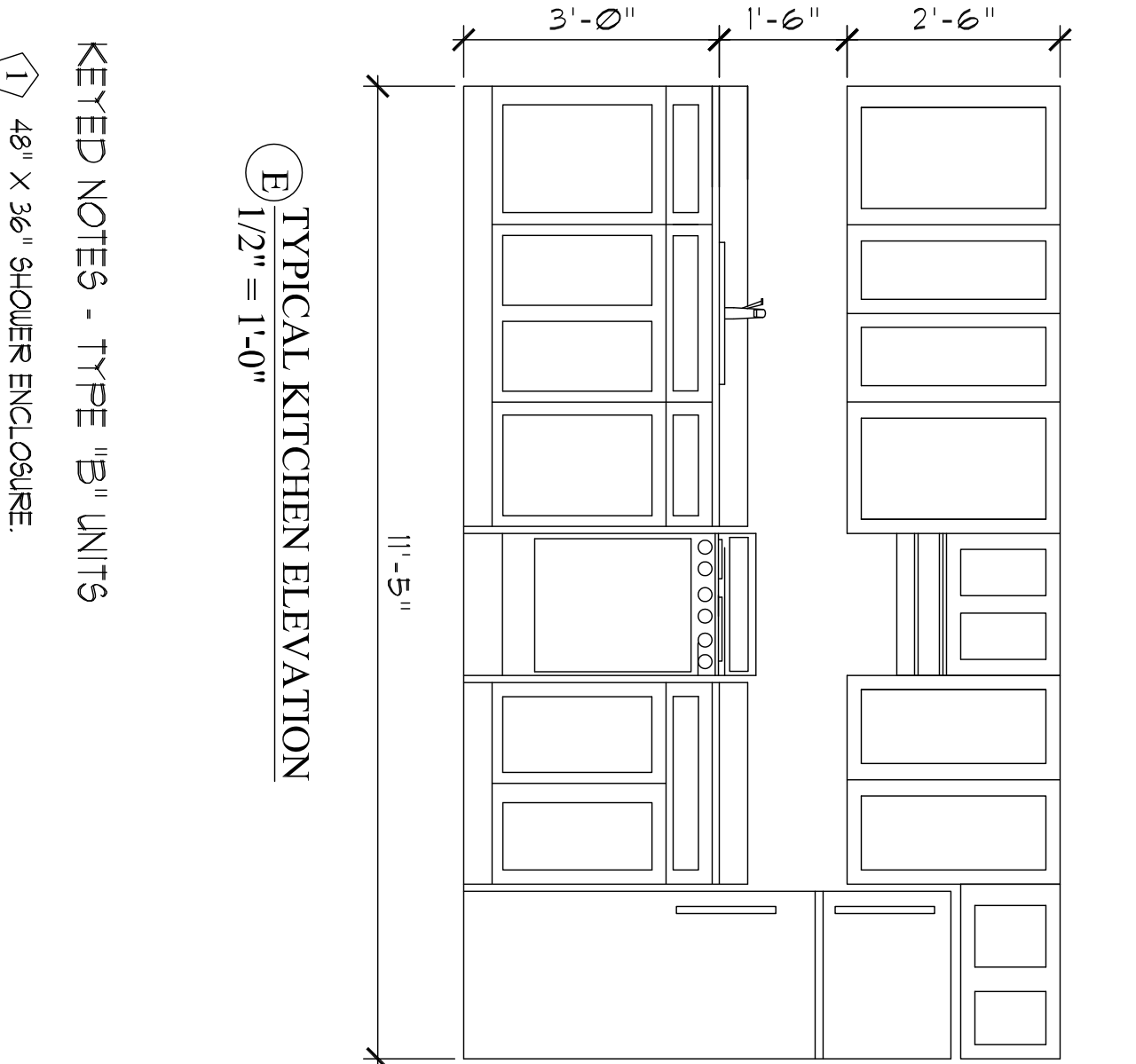
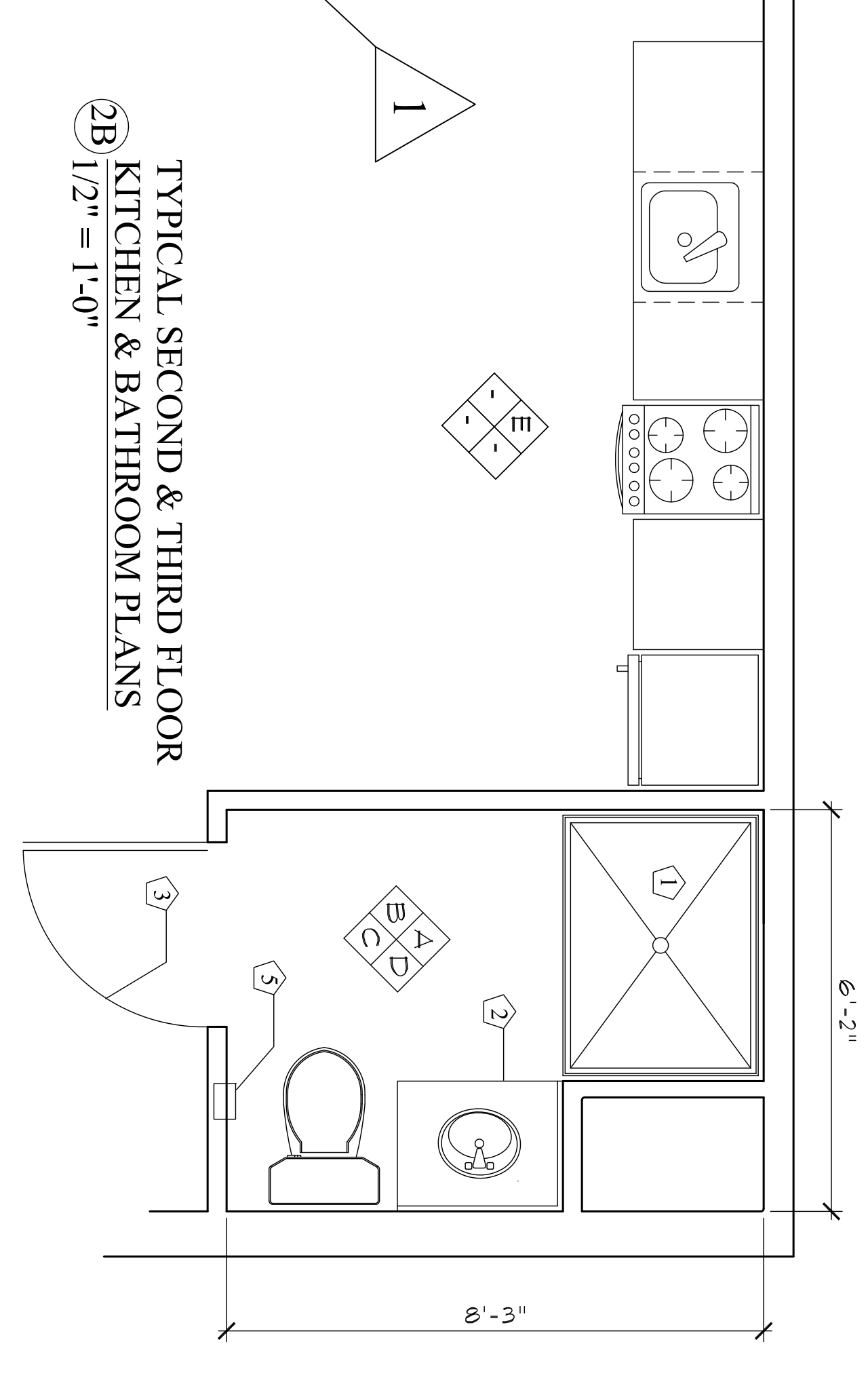


2D TYPICAL KITCHEN ELEVATION
SCALE: 1/2" = 1'

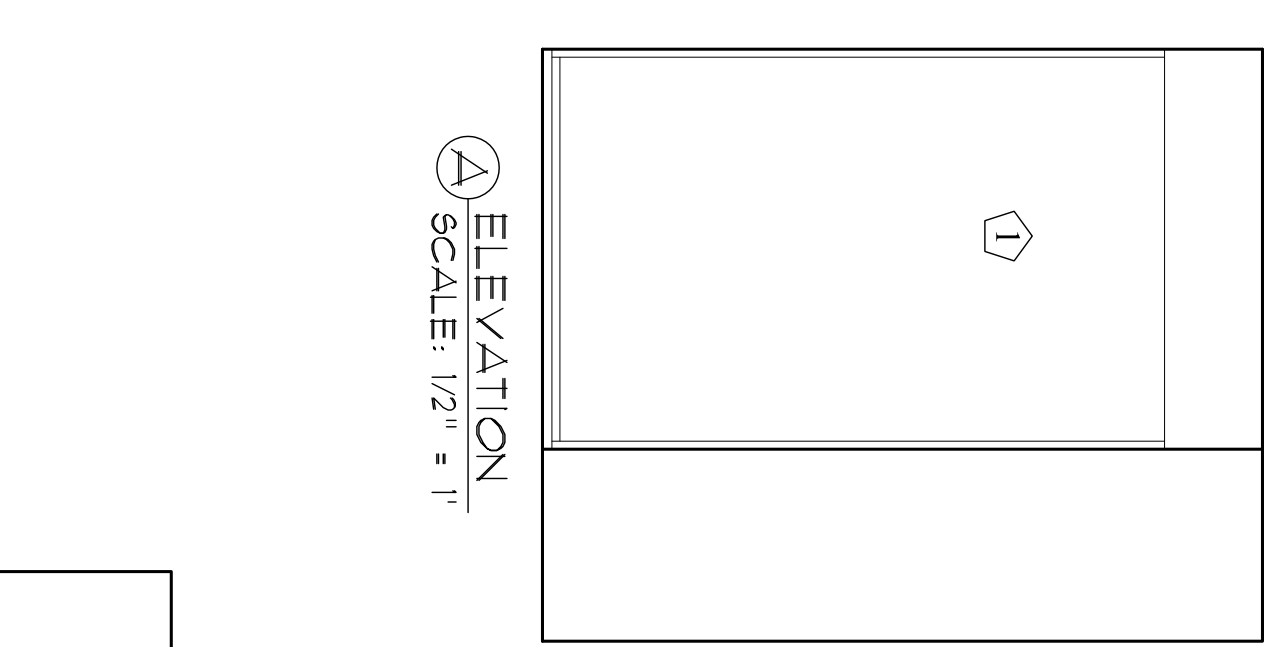
- KEYED NOTES - TYPE 'B' UNITS
- 1 30" X 48" CLEAR SPACE AT SINK
 - 2 30" X 48" CLEAR SPACE AT RANGE
 - 3 30" X 48" CLEAR SPACE AT REFRIGERATOR
 - 4 30" X 48" CLEAR SPACE AT SHOWER
 - 5 30" X 48" CLEAR SPACE AT LAVATORY
 - 6 48" X 56" CLEAR SPACE AT WATER CLOSET
 - 7 48" X 36" ADA COMPLIANT SHOWER ENCLOSURE
 - 8 ADA COMPLIANT LAVATORY
 - 9 ADA COMPLIANT WATER CLOSET
 - 10 LINEN CLOSET SHELVING
 - 11 3/8" SOLID WOOD BLOCKING FOR 2'-0" GUESS BAR
 - 12 3/8" SOLID WOOD BLOCKING AT SEAT LOCATIONS
 - 13 2'-0" X 6'-8" DOOR
 - 14 TP DISPENSER
 - 15 TUBEL BAR (TPP)
 - 16 ROBE HOOK
 - 17 HIEROCABINET

4

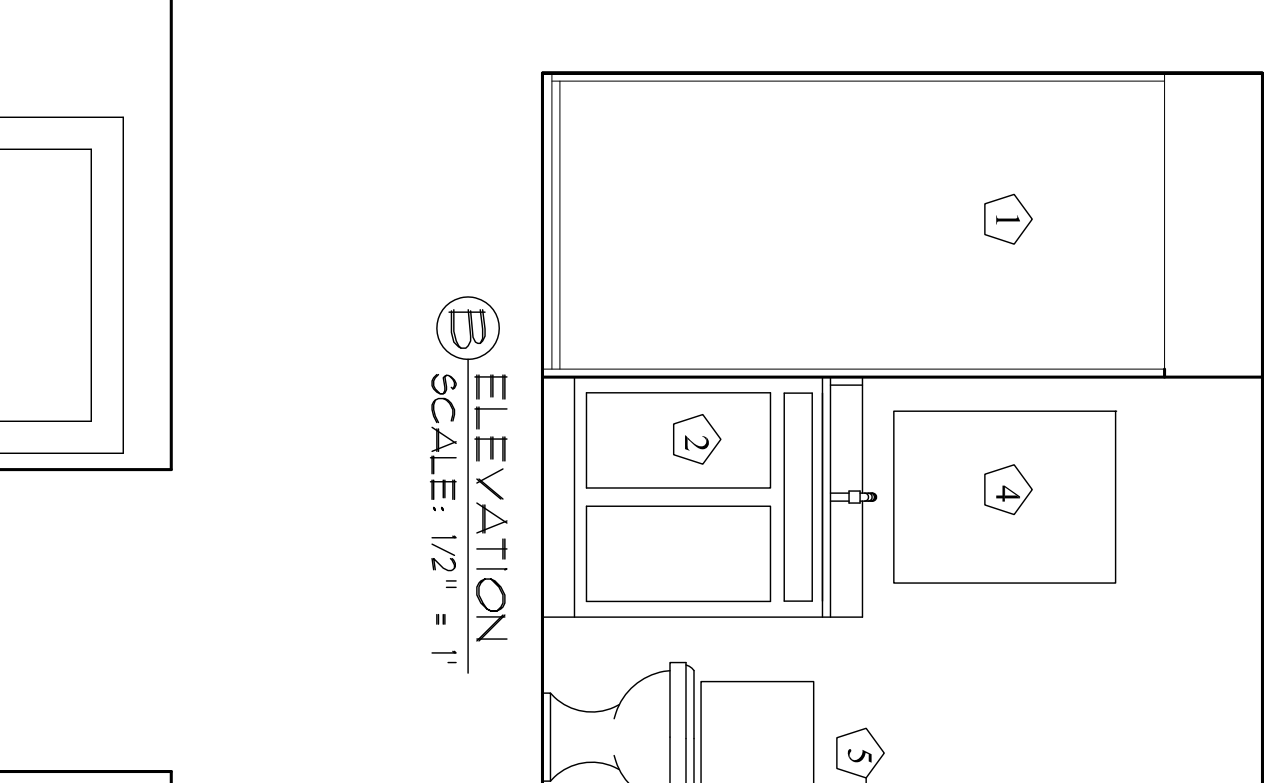
TYPICAL SECOND & THIRD FLOOR KITCHEN & BATHROOM PLANS
1/2" = 1'-0"



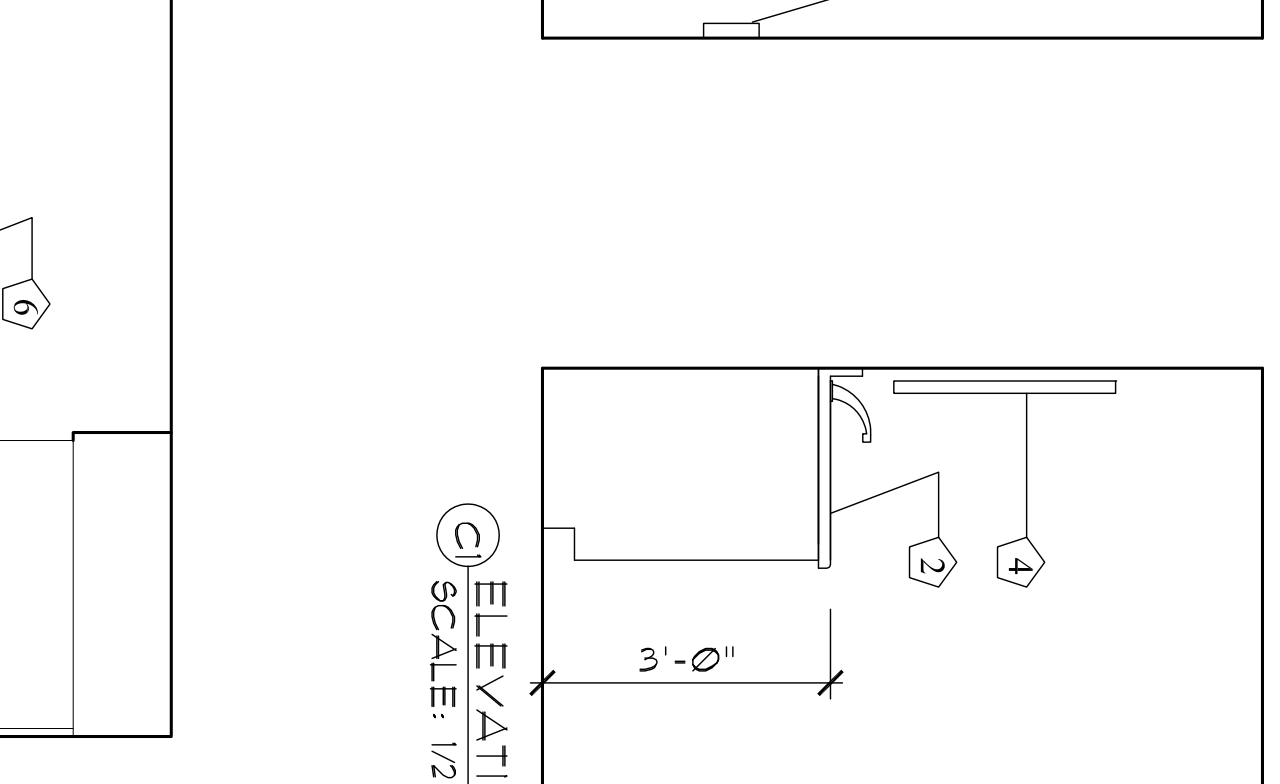
2A TYPICAL KITCHEN ELEVATION
1/2" = 1'-0"



2B TYPICAL KITCHEN ELEVATION
SCALE: 1/2" = 1'



2C TYPICAL KITCHEN ELEVATION
SCALE: 1/2" = 1'



2D TYPICAL KITCHEN ELEVATION
SCALE: 1/2" = 1'

TYPICAL DRAFTSTOPPING ASSEMBLY
1/4" = 1'-0"

- KEYED NOTES:
- 1 2x4 AT 24" O.C.
 - 2 1 1/2" GB - T-MRF & MUD
 - 3 2x4 BOTTOM & TOP PLATES - SEAL AIR GAPS

- KEYED NOTES - TYPE 'B' UNITS
- 1 48" X 36" SHOWER ENCLOSURE
 - 2 2'-0" X 2'-6" VANITY
 - 3 2'-0" X 6'-8" DOOR
 - 4 HIEROCABINET
 - 5 TP DISPENSER
 - 6 TUBEL BAR (TPP)
 - 7 ROBE HOOK

ELEVATION
SCALE: 1/2" = 1'

ELEVATION
SCALE: 1/2" = 1'