

A	B	C	D	E	Area in Sq.Ft. enclosed by a single rectangle: Area = A x B	Area in Sq.Ft. enclosed by two rectangles: Area = (A x D) + (A x E)	PART NUMBER
12"	7'-8 ³ / ₄ "	8 ³ / ₄ "	5'-2"	2'-3 ¹ / ₂ "	7.73	7.46	QZ-CL-12-MCRW
18"	11'-7"	13 ¹ / ₄ "	6'-10 ¹ / ₂ "	3'-6 ¹ / ₂ "	17.37	16.80	QZ-CL-18-MCRW
24"	15'-5 ¹ / ₂ "	17 ³ / ₄ "	10'-4"	4'-7 ¹ / ₄ "	30.90	29.87	QZ-CL-24-MCRW
30"	19'-4"	22 ¹ / ₄ "	12'-11"	5'-9"	48.33	46.67	QZ-CL-30-MCRW
36"	23'-2"	26 ¹ / ₂ "	13'-9"	7'-1"	69.50	62.50	QZ-CL-36-MCRW
42"	27'-0 ¹ / ₂ "	31"	18'-1"	8'-0 ³ / ₄ "	94.65	91.51	QZ-CL-42-MCRW

RACEWAY MOUNTED INTERNALLY ILLUMINATED CHANNEL LETTERS - COLORED FACES FOR USE ON WHITE FASCIAS

"QUIZNOS" SPECIFICATIONS

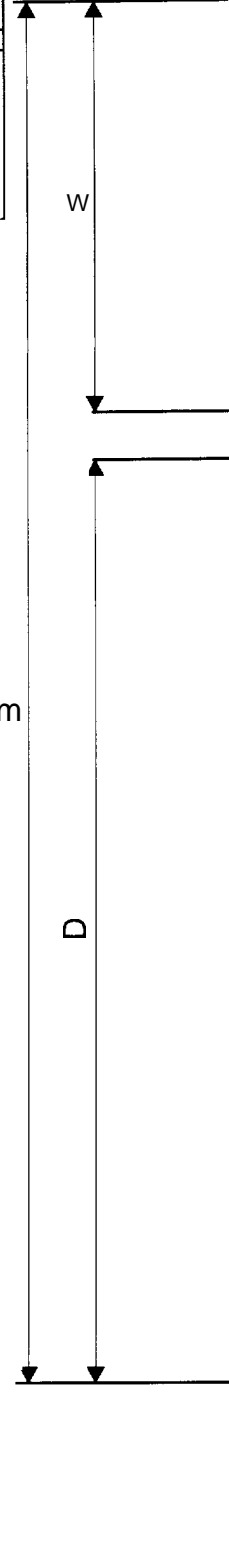
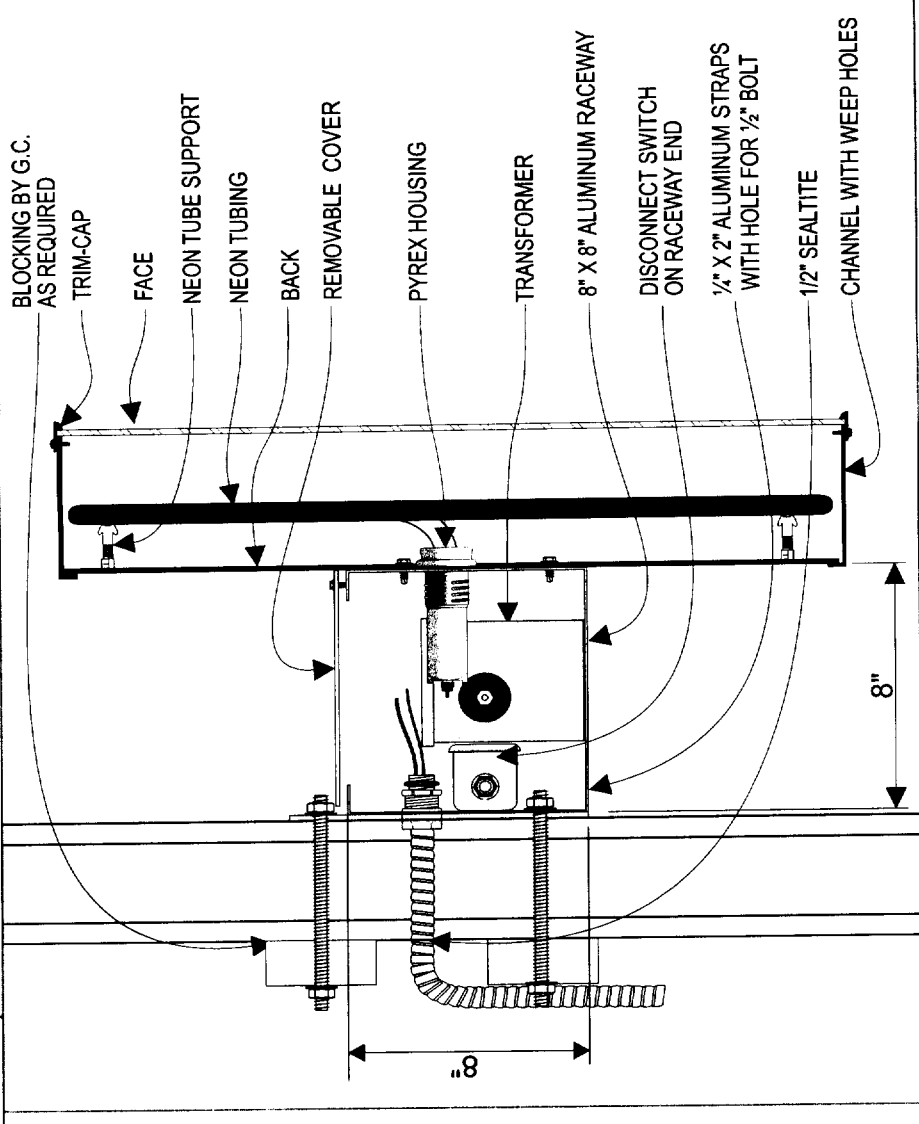
- FACES: 7328 MATTE WHITE 3/16" ACRYLIC WITH TRANSLUCENT VINYL OVERLAY, 3M VT #11399 GREEN
- RETURNS: SEMI-GLOSS BLACK, .040 ALUM., 5" DEEP
- BACKS WHITE ALUMINUM .050" UP TO AND INCLUDING 24", AND .063" OVER 24".
- TRIM-CAP: GREEN JEWELITE #JA44QGREENFR - 3/4" FOR 30" LETTERS AND SMALLER, 1" FOR LETTERS ABOVE 30"
- (2) 1/2" DIA. WEEP HOLES FOR EACH LETTER
- ILLUMINATION: 15MM VOLTARC GREEN, ARGON GAS FILLED

"SUB" SPECIFICATIONS:

- FACES: 7328 MATTE WHITE 3/16" ACRYLIC WITH TRANSLUCENT VINYL OVERLAY, 3M VT #11398 RED
- RETURNS: SEMI-GLOSS BLACK, .040 ALUM., 5" DEEP
- BACKS WHITE ALUMINUM .050" UP TO AND INCLUDING 24", AND .063" OVER 24".
- TRIM-CAP: RED JEWELITE #JA44QREDFR - 3/4" FOR 30" LETTERS AND SMALLER, 1" FOR LETTERS ABOVE 30"
- (2) 1/2" DIA. WEEP HOLES FOR EACH LETTER
- ILLUMINATION: 15MM CLEAR RED

RACEWAY SPECIFICATIONS:

- EXTRUDED ALUM. RACEWAY, 8" X 8" X .090" ALUMINUM PAINTED TO MATCH FASCIA
- DISCONNECT SWITCH ON RACEWAY END
- U.L. AND MANUFACTURERS LABELS



artwork exclusive property of
MANDEVILLE SIGN
making your mark.

NAME	MANDEVILLE SIGN	EST.	SINCE 1917
LOCATION	676 GEORGE WASHINGTON HIGHWAY, LINCOLN, RI 02865-4255		
PHONE	401-334-9100	FAX	401-334-7799
WEB	www.mandevillesign.com		

APPROVED VENDOR FOR

Quiznos SUB

QZ-CL-XX-MCRW

RACEWAY MOUNTED ILLUMINATED CHANNEL LETTERS-COLORED FACES

8/27/03hd 9/29/03hd 10/03/03hd

5.1

NO SCALE