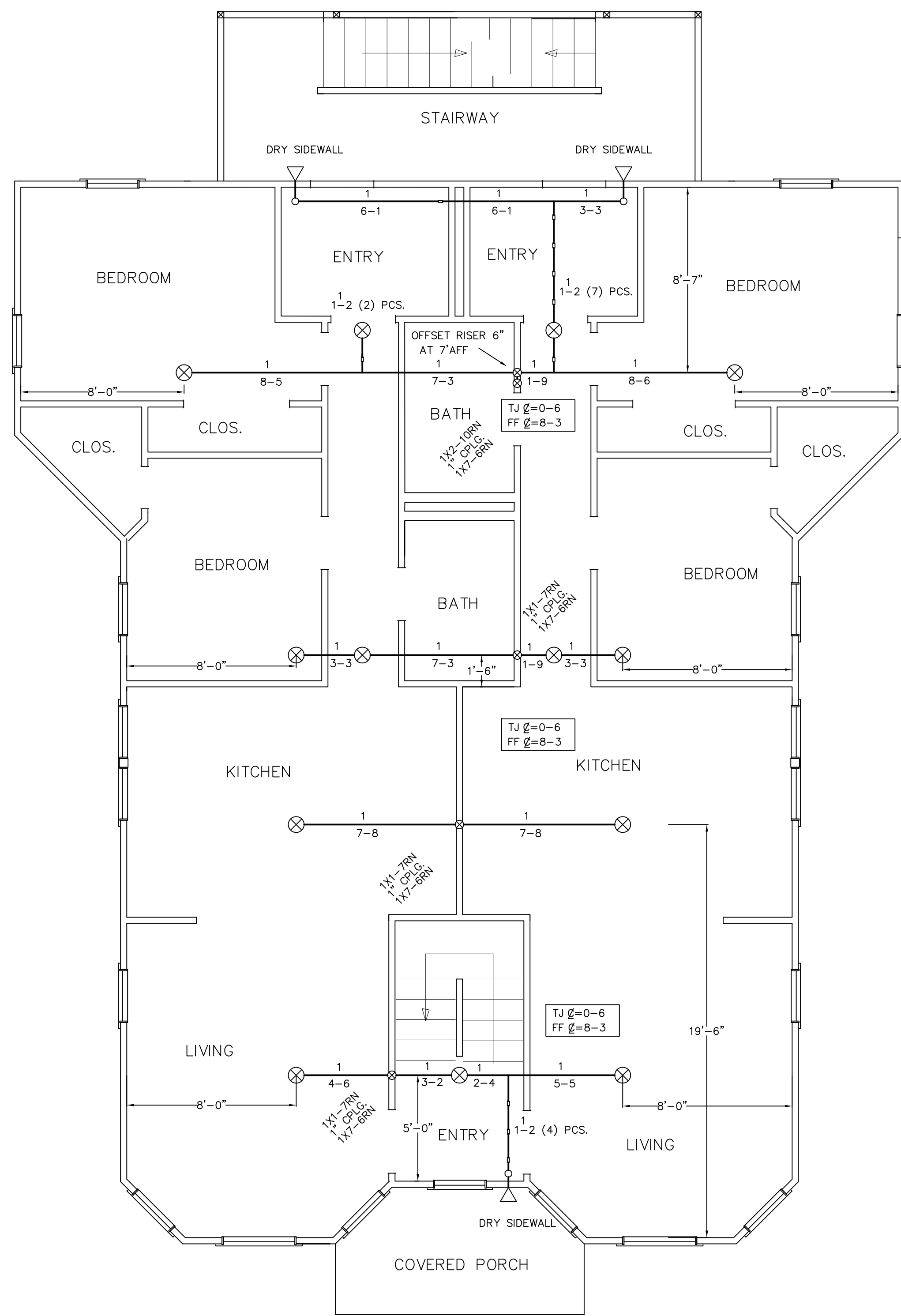
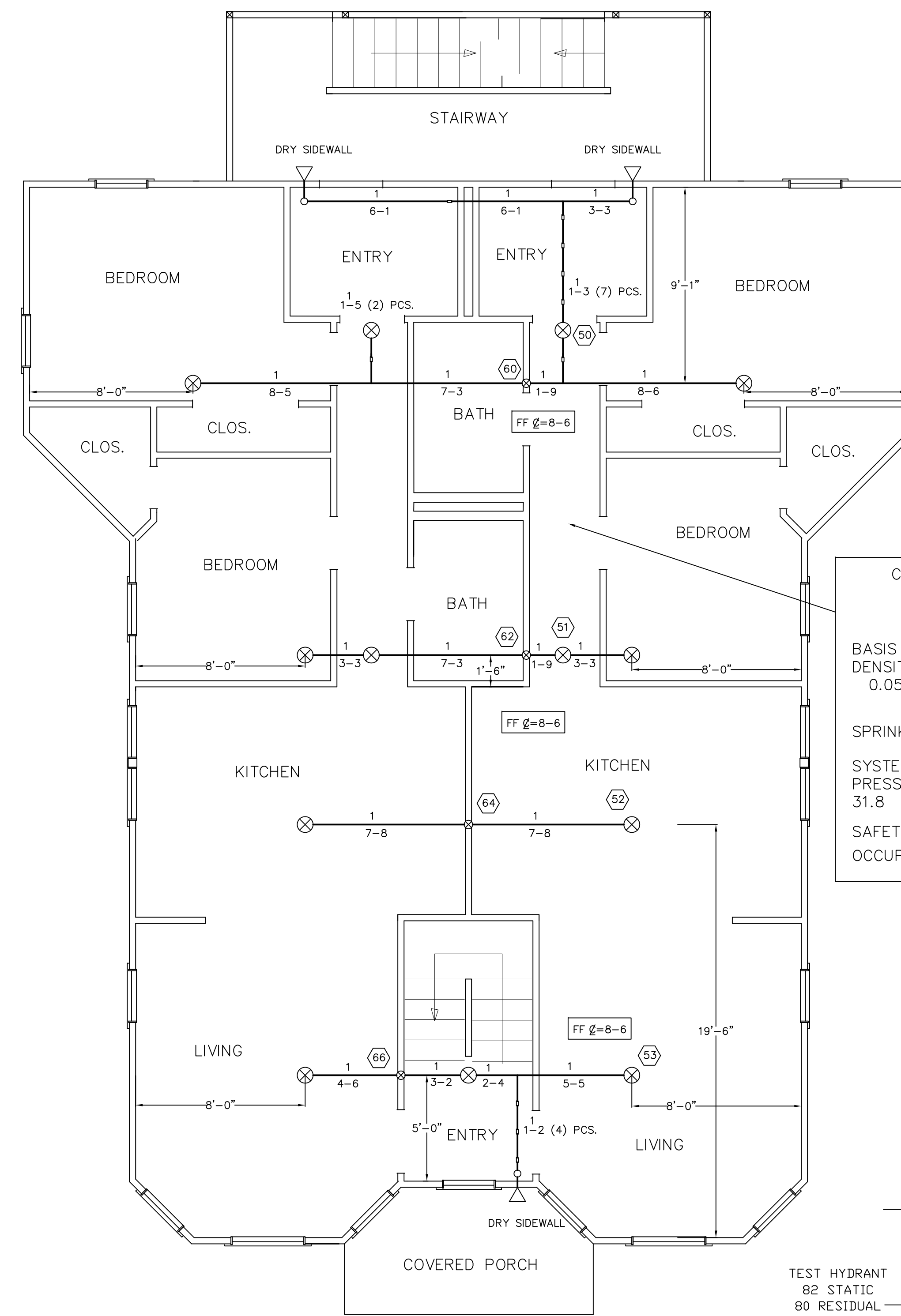


FIRST FLOOR



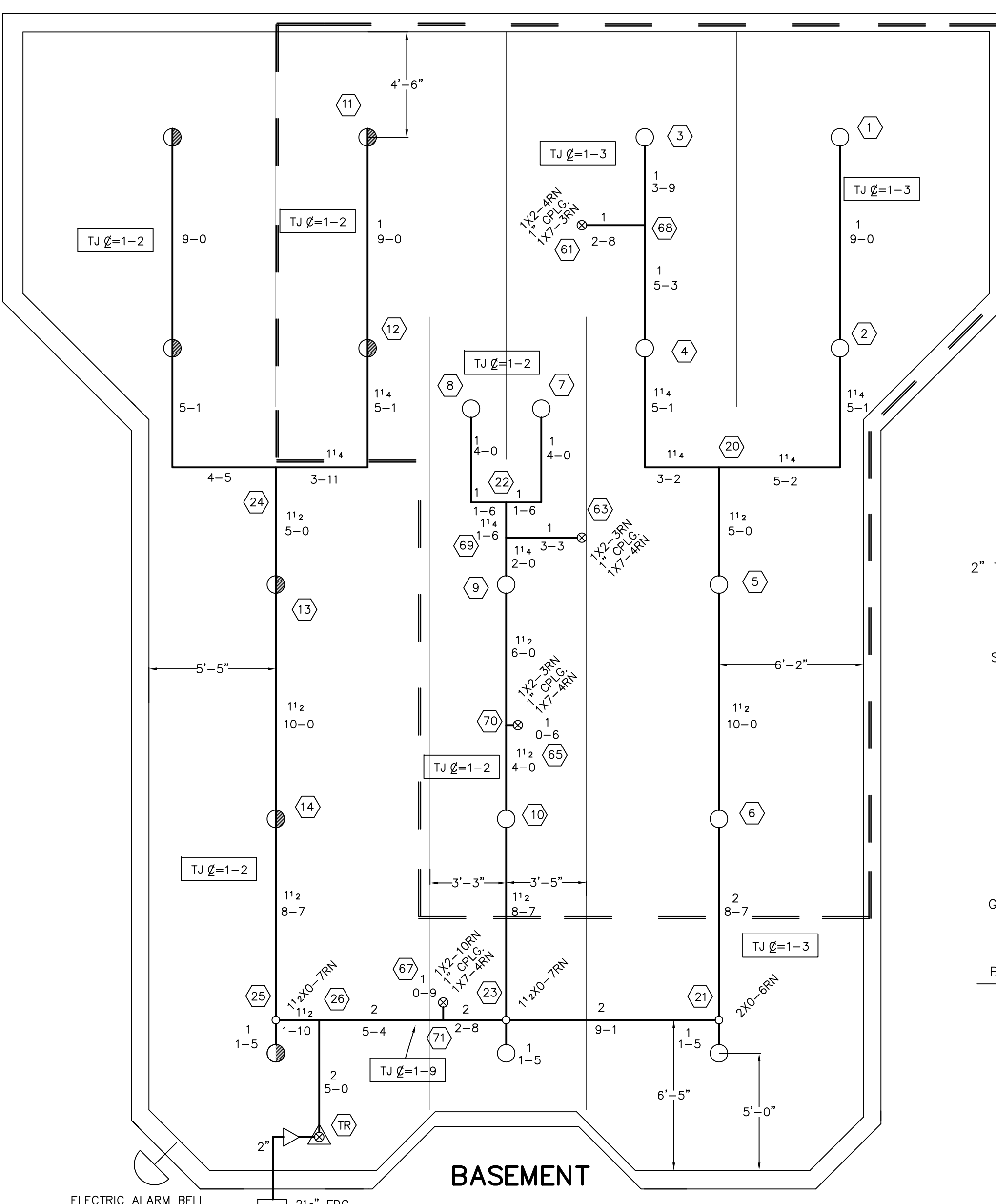
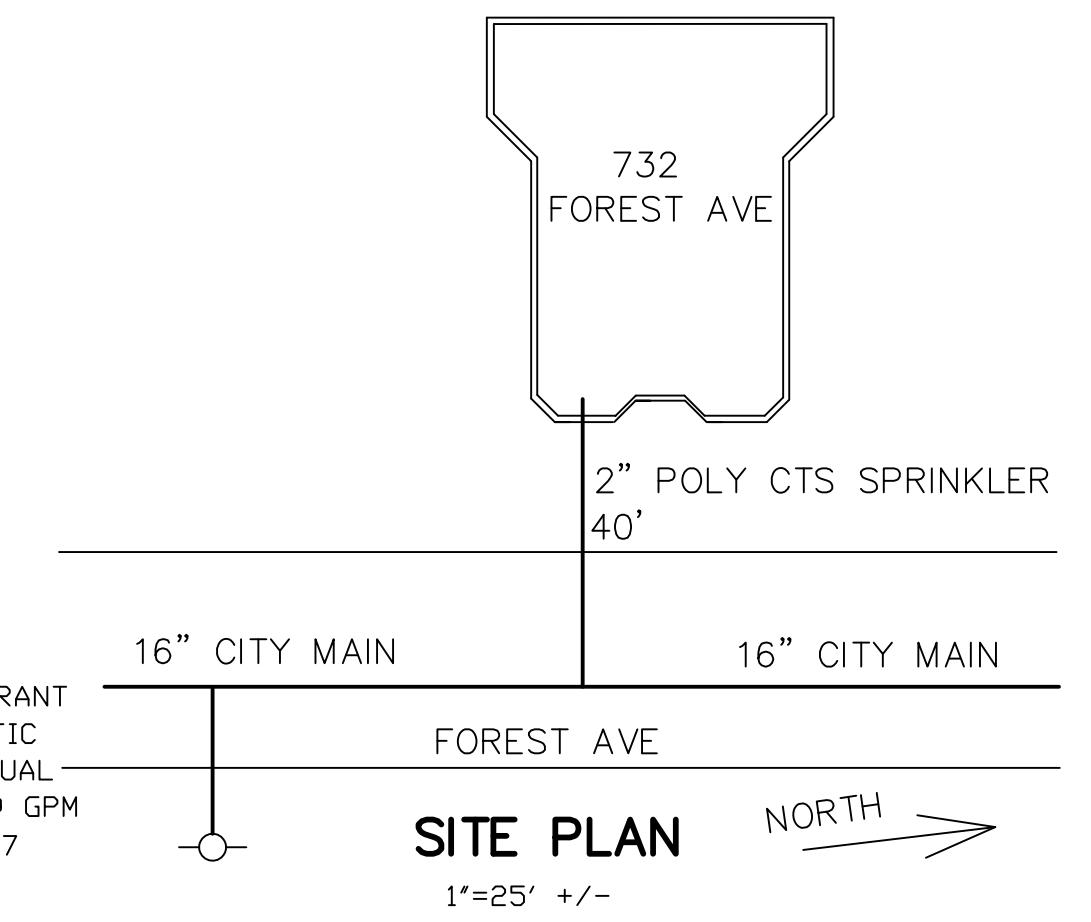
SECOND FLOOR

REQUIRED INSULATION METHODS PER NFPA STANDARDS ARE REQUIRED TO BE FURNISHED BY THE BUYER/OWNER OVER PIPES.



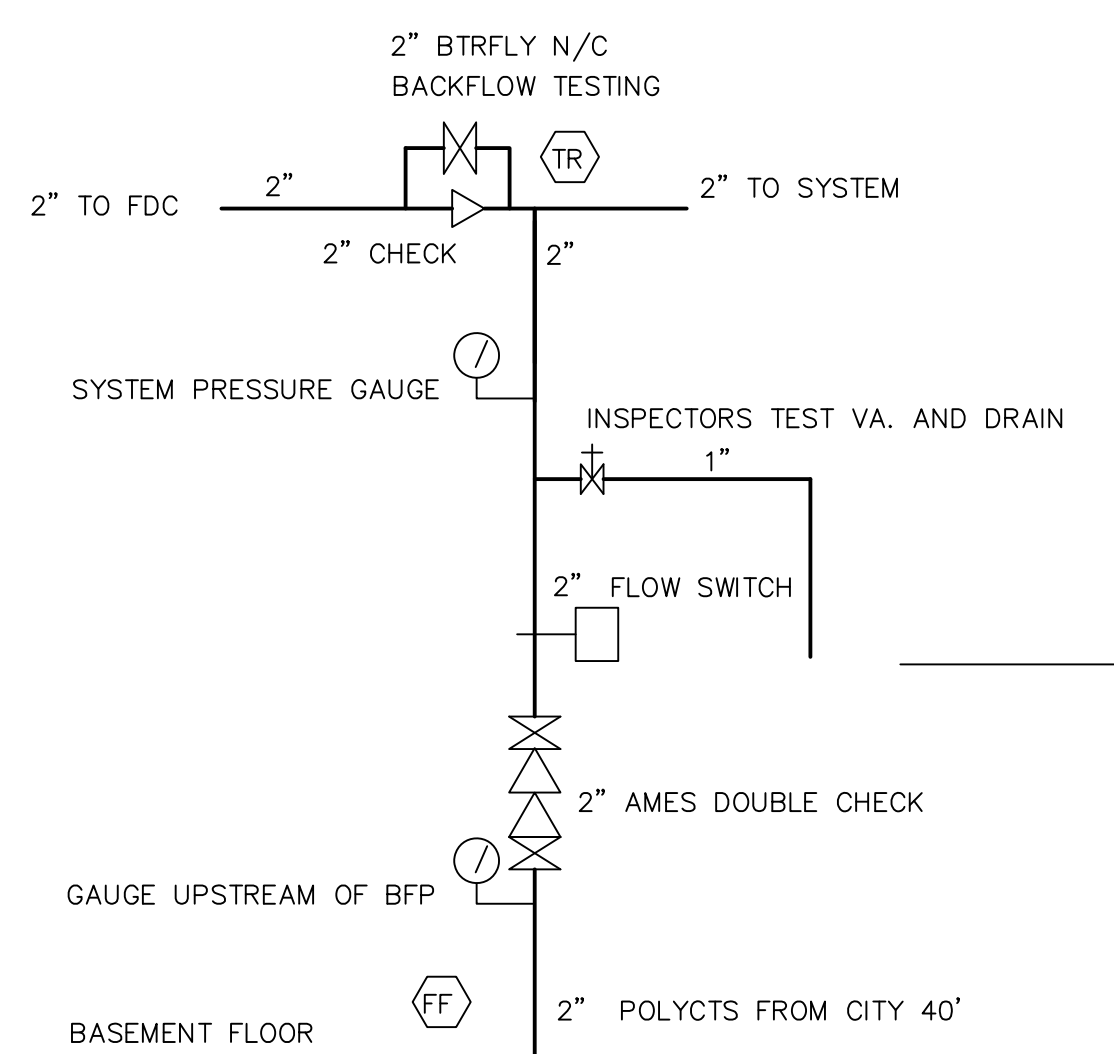
THIRD FLOOR

CALC: 732 FOREST AVE
 THIRD FLOOR .WXF
 HYDRAULIC DATA:
 BASIS OF DESIGN:
 DENSITY 0.05 AREA OF COVERAGE 4
 SPRINKLERS TOTAL ORIFICE TEMP 4 7/16" 155"
 SYSTEM DEMAND AT CITY:
 PRESSURE FLOW HOSE 31.8 52.7 0
 SAFETY MARGIN 50.2 PSI
 OCCUPANCY: APARTMENTS

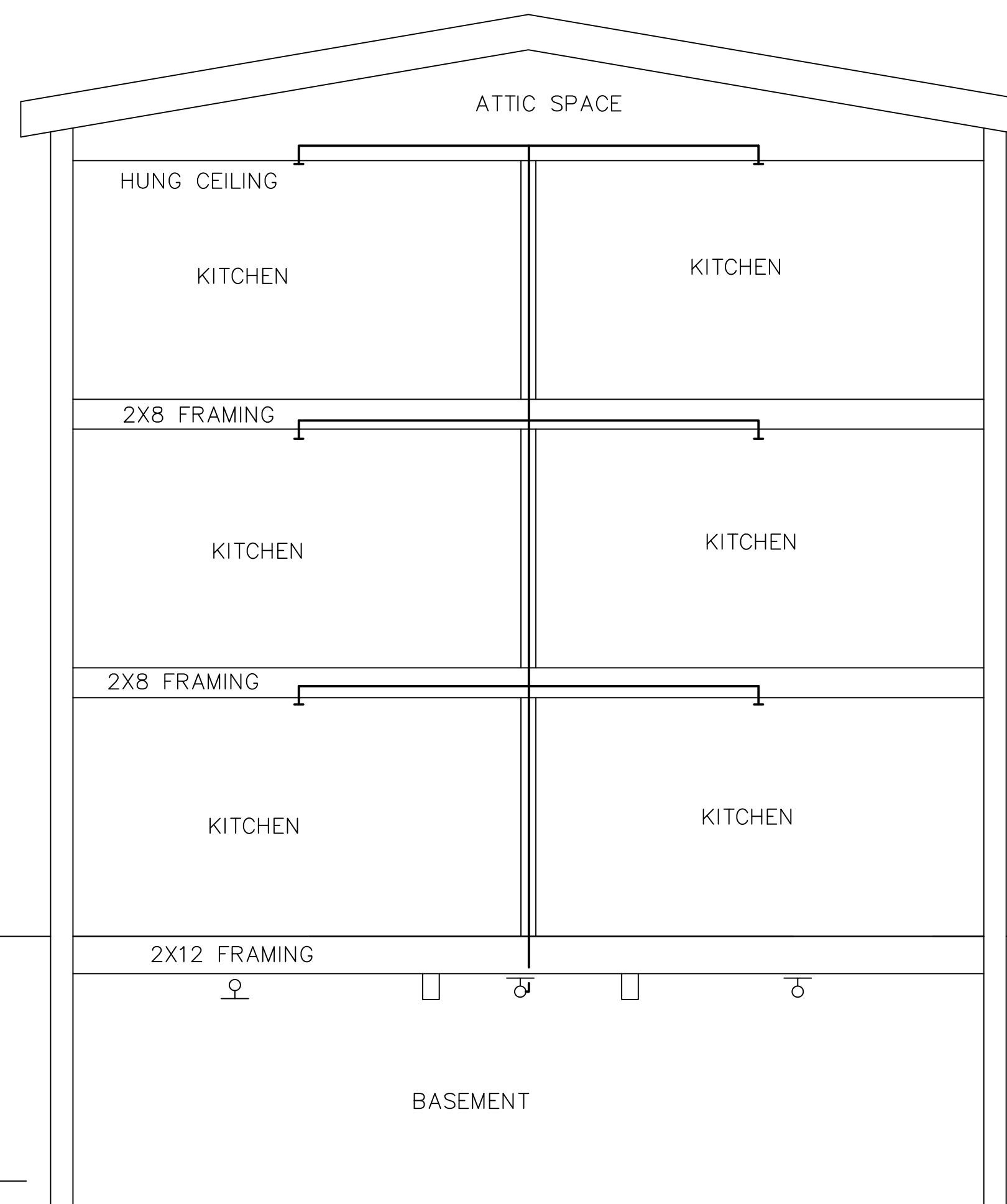


BASEMENT

CALC: 732 FOREST AVE
 BASEMENT .WXF
 HYDRAULIC DATA:
 BASIS OF DESIGN:
 DENSITY 0.15 AREA OF COVERAGE 900 SQ FT
 SPRINKLERS TOTAL ORIFICE TEMP 12 1/2" 155"
 SYSTEM DEMAND AT CITY:
 PRESSURE FLOW HOSE 75.8 211 250
 SAFETY MARGIN 5.8 PSI
 OCCUPANCY: RES. BASEMENT



RISER SECTION
NO SCALE



SECTION

- 12-155' RELIABLE F1FR56 Q R BRASS UPRIGHTS BASEMENT
- 7-155' RELIABLE F1FR56 Q R BRASS PENDENTS BASEMENT
- ⊗ 39-155' RELIABLE F1RES49 WHITE RECESSED PENDENT LIVING SPACE
- ▷ 9-155' RELIABLE DRY SIDEWALL BRASS
- TJ g=XX TOP OF JOISTS TO CENTERLINE OF PIPE
- FF g=XX FIN FLR TO CENTERLINE OF PIPE
- BJ g=XX BOTTOM OF JOISTS TO CENTERLINE OF PIPE
- C g=XX CEILING TO CENTERLINE OF PIPE
- RISE OR DROP NIPPLE
- ⊗ RISER BETWEEN FLOORS

SYSTEM CLASSIFICATION

INSTALL AN NFPA #13R WET PIPE SYSTEM ON THE FIRST, SECOND AND THIRD FLOORS AND A NFPA #13 ORDINARY HAZARD WET PIPE SYSTEM IN THE BASEMENT TO MEET NFPA #13, STATE OF MAINE AND CITY OF PORTLAND CODES.

GENERAL NOTES

ALL DIMENSIONS ARE CENTER TO CENTER U/N
 ALL 2" AND SMALLER PIPE TO SCH 40 BLACK STEEL
 ALL SCREWED FITTINGS TO BE STD. WT. C.I. BLACK U/N
 ALL HANGER SPACING AND SIZES TO CONFORM TO NFPA #13.
 SUFFICIENT HEAT TO PREVENT FREEZING OF THE WET PIPE SPRINKLER SYSTEM AND REQUIRED INSULATION METHODS PER NFPA STANDARDS ARE REQUIRED TO BE FURNISHED BY THE BUYER/OWNER.

- ⊗ 39 RELIABLE F1RES49 RESIDENTIAL WHITE PENDENT RECESSED LIVING SPACE 1/2"x7/16" K=4.9
- 7 RELIABLE F1FR OR BRASS PENDENT BASEMENT 1/2"x1/2" K=5.6
- 12 RELIABLE F1FR OR BRASS UPRIGHT BASEMENT 1/2"x1/2" K=5.6
- ▷ 9 RELIABLE OR BRASS DRY SIDEWALL OUTSIDE DECKS 1/2"x1/2" K=5.6

DEAN & ALLYN, INC.
 FIRE PROTECTION · SPECIAL HAZARD
 116 LEWISTON ROAD, GRAY, MAINE 04039
 (207)657-5646 FAX:(207)657-5647

732 FOREST AVENUE
 PORTLAND MAINE

REVISIONS	DATE	APPROVED BY	DATE	DRAWN BY	DATE

NO. OF SPRINKLERS SHOWN ON THIS SHEET	67
NO. OF SPRINKLERS ON JOB	67
CONTRACT NO.	C171466

NO. OF SPRINKLERS SHOWN ON THIS SHEET	67
NO. OF SPRINKLERS ON JOB	67
CONTRACT NO.	C171466