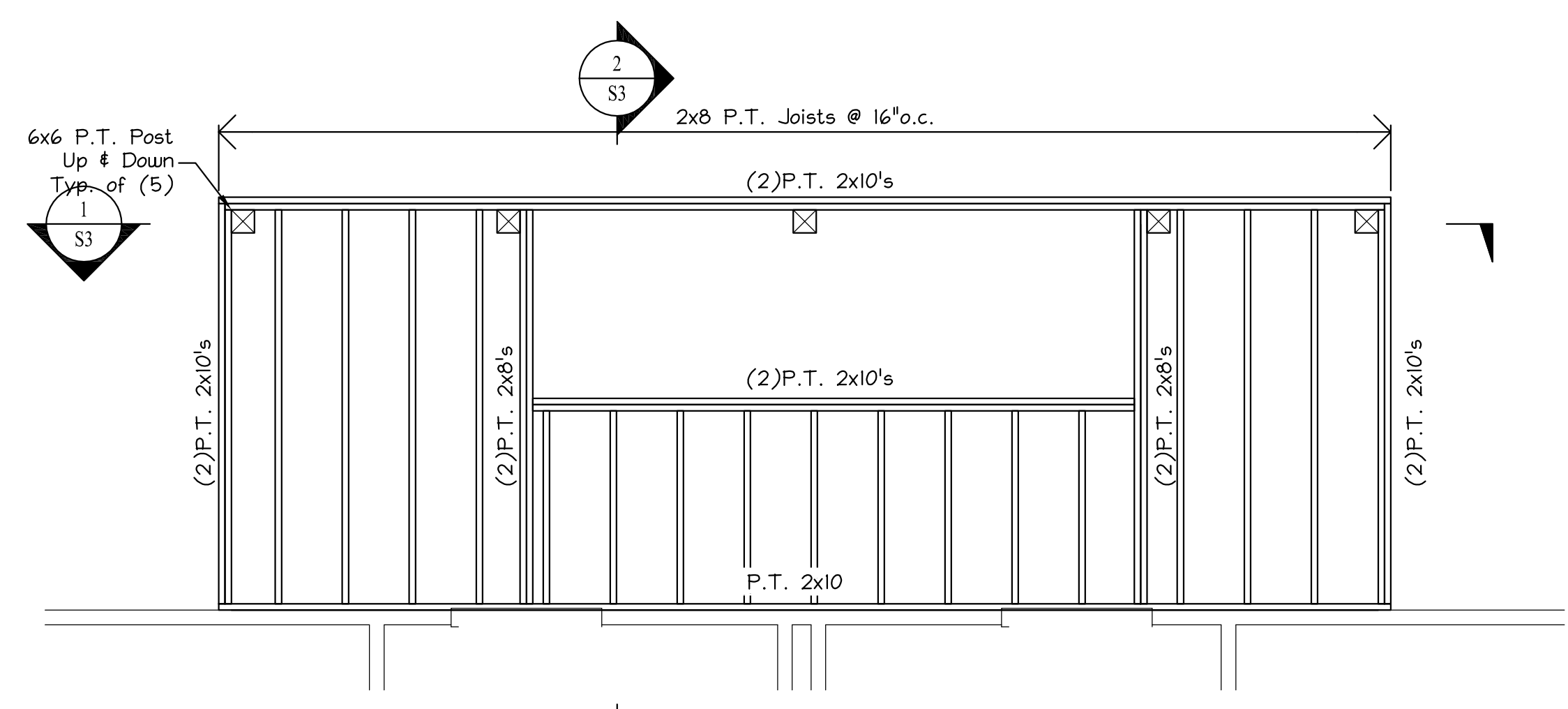
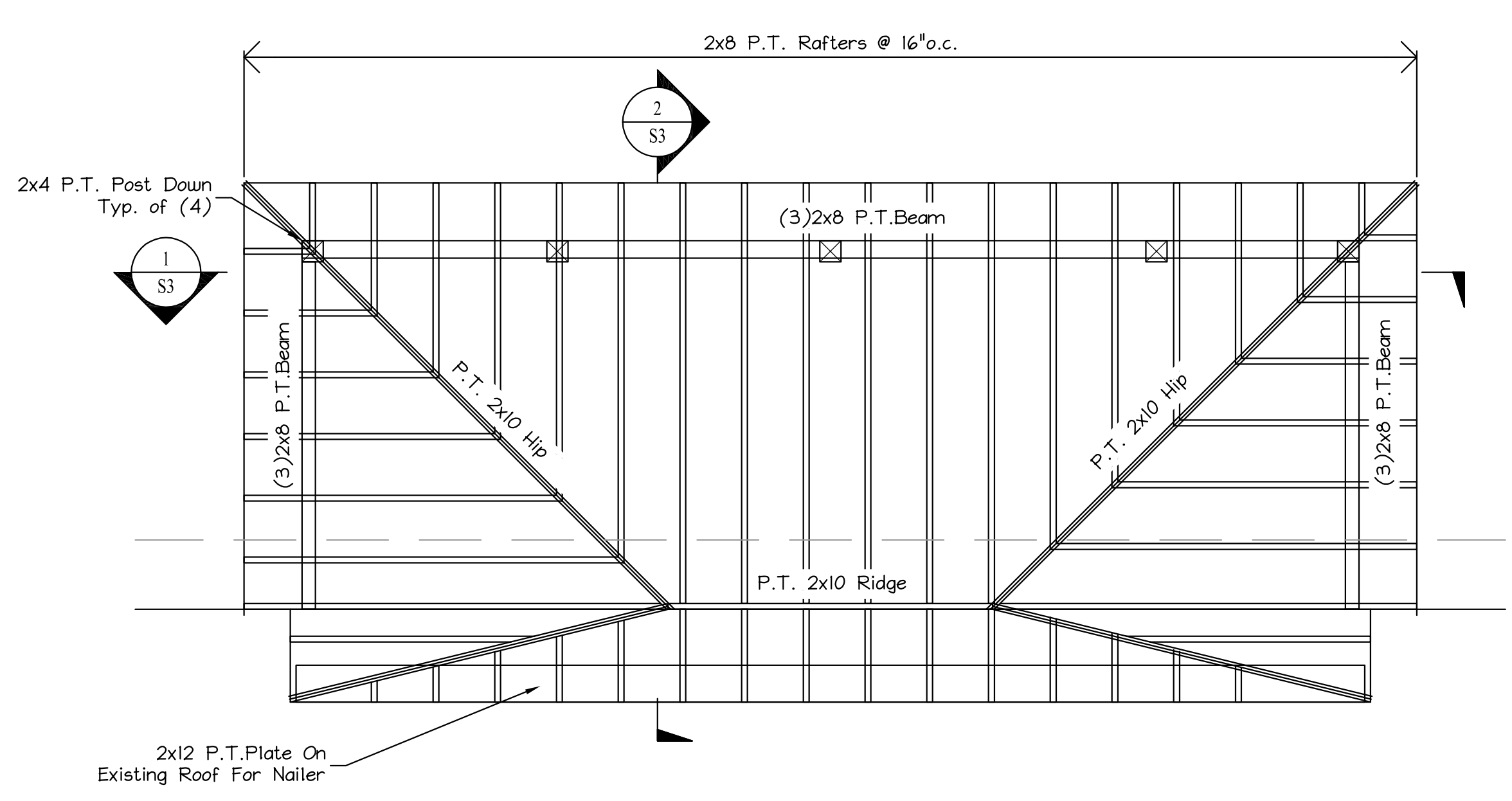


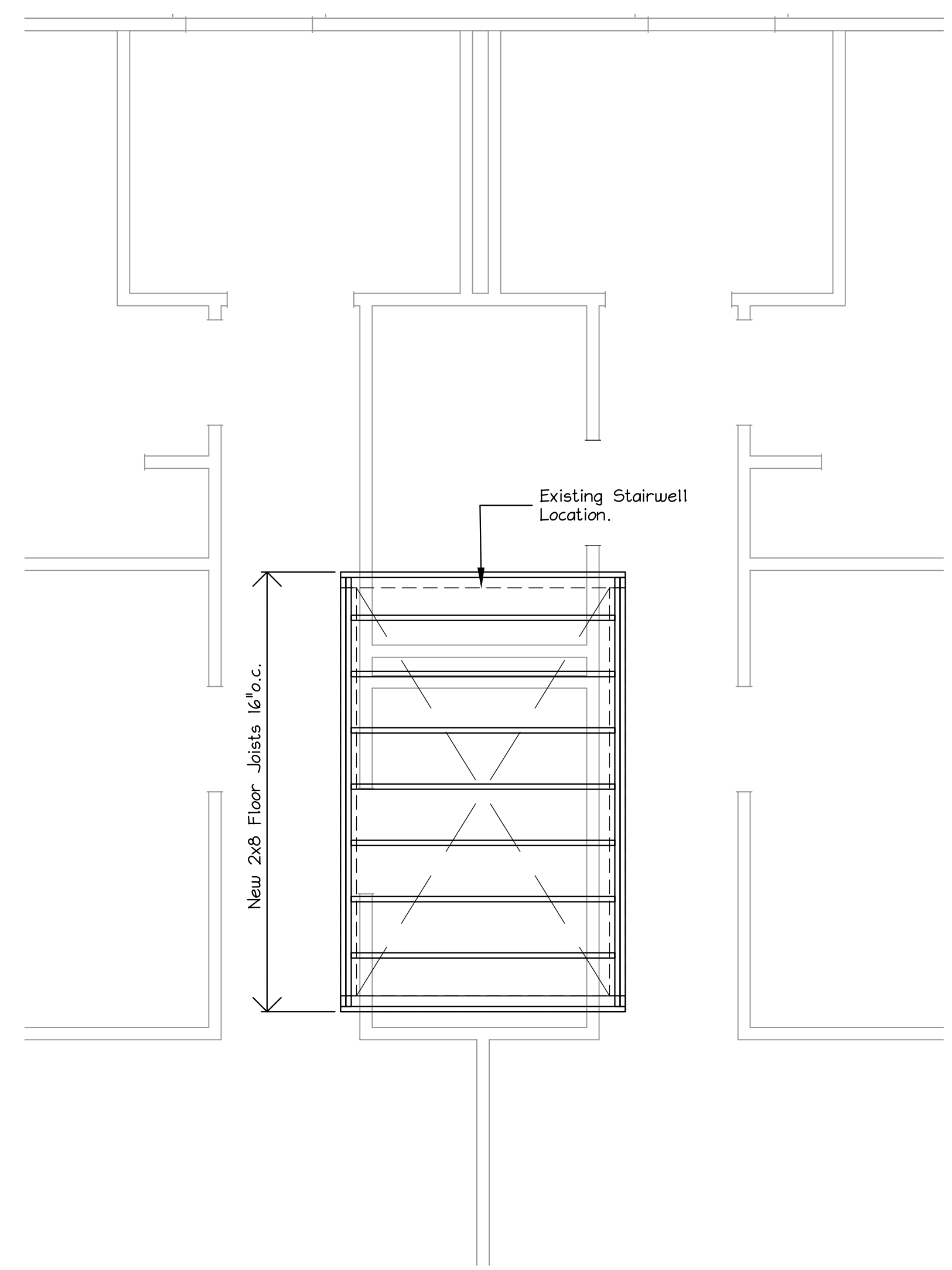
1ST FLOOR DECK FRAMING PLAN
Scale: 3/8" = 1'-0"



2ND & 3RD FLOOR DECK FRAMING PLAN
Scale: 3/8" = 1'-0"



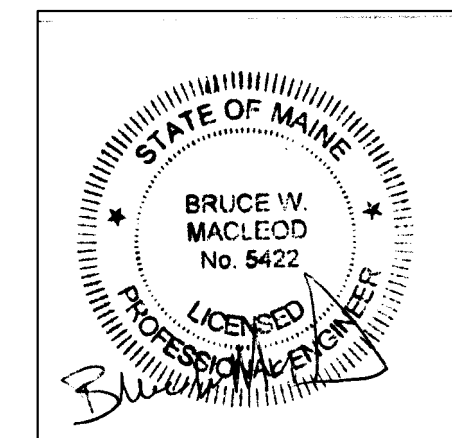
STAIR ROOF FRAMING PLAN
Scale: 3/8" = 1'-0"



FLOOR INFILL FRAMING PLAN
Scale: 3/8" = 1'-0"

HOOD FRAMING NOTES:

- STRUCTURAL LUMBER:
 SPRUCE PINE FIR NO1/NO2 OR BETTER
 Fb = 875 PSI Fv = 125 PSI
 Fc = 1150 PSI E = 1400000 PSI
 MANUFACTURED LUMBER:
 BOISE CASCADE VERSA-LAM 2.0 3100
 Fb = 3100 PSI Fv = 285 PSI
 Fc = 3000 PSI E = 2000000 PSI
- DESIGN CODE:
 IBC 2009 / NATIONAL DESIGN SPECIFICATIONS FOR WOOD CONSTRUCTION BY THE NATIONAL FOREST PRODUCTS ASSOCIATION.
- NAILING REQUIREMENTS FOR PLYWOOD SHEATHING:
 SEE CODE FOR NAILING AND SPACING REQUIREMENTS.
- SPIKE TOGETHER ALL FRAMING MEMBERS WHICH ARE BUILT-UP USING MULTIPLE 2x LUMBER.
- PROVIDE GALVANIZED METAL TIES EQUAL TO SIMPSON H2.5 HURRICANE TIES BETWEEN ROOF RAFTERS OR TRUSSES AND SUPPORTING WALL MEMBERS, UNLESS SHOWN OTHERWISE. PROVIDE GALVANIZED METAL CONNECTORS EQUAL TO SIMPSON TC26 TRUSS CONNECTOR BETWEEN ALL ROOF SCISSOR TRUSSES AND SUPPORTING WALL MEMBERS, UNLESS SHOWN OTHERWISE.
- PROVIDE PRESSURE TREATED LUMBER FOR ALL LUMBER IN CONTACT WITH MASONRY OR CONCRETE.
- ROOF SHEATHING: 5/8" APA RATED SHEATHING, EXTERIOR OR STRUCTURAL I OR II RATED SHEATHING, SPAN RATING 32/16 (TRUSSES), 24/12 (JOISTS). INSTALL SHEETS WITH FACE GRAIN DIRECTION PERPENDICULAR TO SUPPORTING MEMBERS.
- 1-JOISTS ARE DESIGNED BASED ON NORDIC JOISTS. FOLLOW MANUFACTURERS INSTRUCTIONS FOR INSTALLATION.
- ALL NAILS, SPIKES, BOLTS ETC. FASTENING MEMBERS TO PRESSURE TREATED LUMBER SHALL BE EITHER STAINLESS STEEL OR HEAVY GALVANIZED.



MacLeod Structural Engineers, PA 90 Bridge Street Ste252 Westbrook, Maine 04038 207.839.0980		
732 Forest Ave.		
Portland, Maine		
TITLE: Floor & Roof Framing Plans		
DATE: 4/25/17	DRAWN BY: BIM	DRAWING NUMBER:
SCALE: as noted	PROJ NO: 2017-031	S-2.0