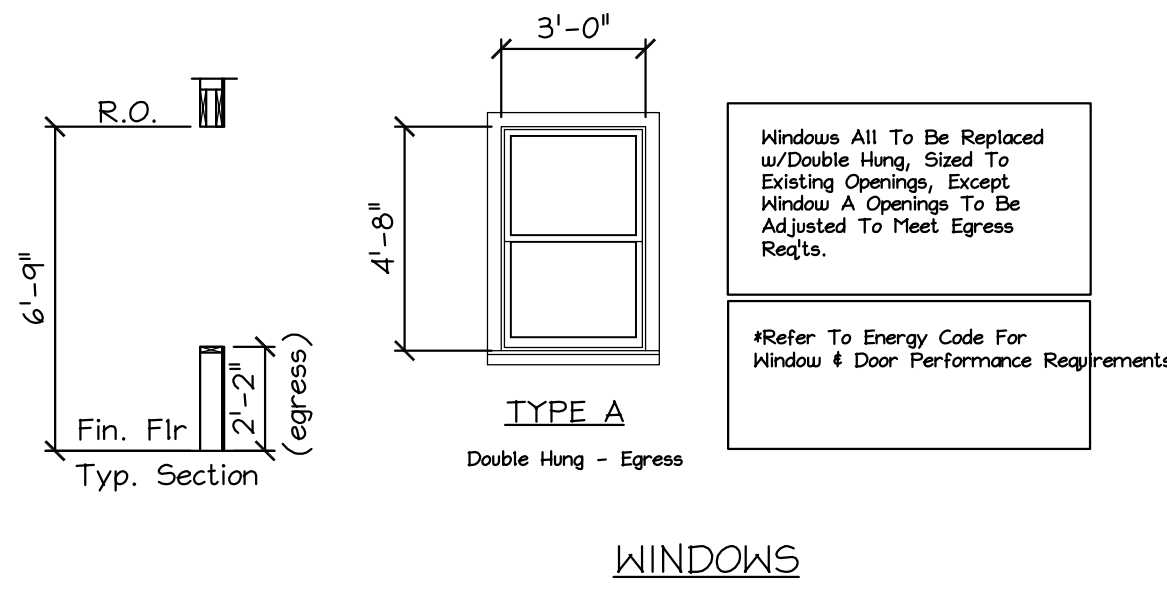


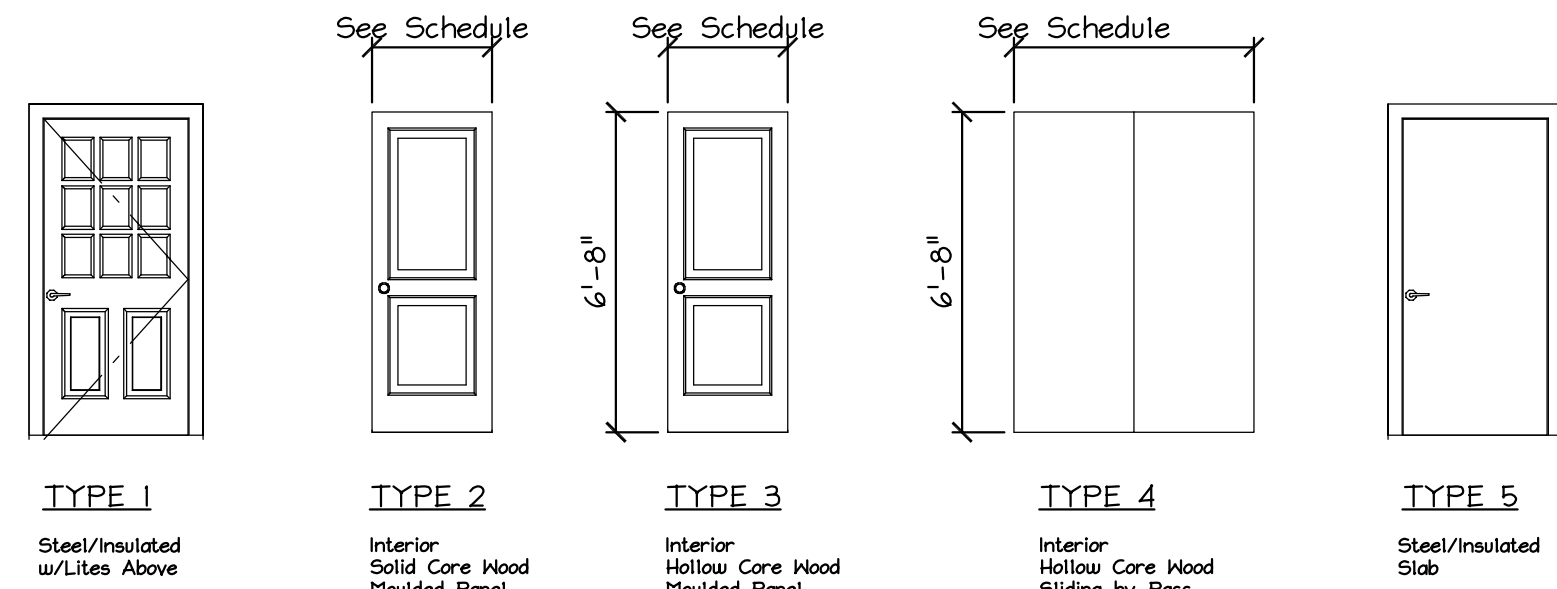
DOOR SCHEDULE

DOOR NO.	SIZE	LABEL	LOCATION	TYPE	ELEV	REMARKS
001	3'-0" x 6'-8"	---	BASEMENT	EXT./INSULATED	1	
101	3'-0" x 6'-8"	---	ENTRY	EXT./INSULATED	1	
201	3'-0" x 6'-8"	---	ENTRY	EXT./INSULATED	1	
301	3'-0" x 6'-8"	---	ENTRY	EXT./INSULATED	1	
102	3'-0" x 6'-8"	---	ENTRY UNIT	INT./SOLID CORE	2	IHR. RATED
103	2'-6" x 6'-8"	---	BATH	INT./HOLLOW CORE	3	
104	2'-6" x 6'-8"	---	BEDROOM 2	INT./HOLLOW CORE	3	
105	2'-0" x 6'-8"	---	CLOSET	INT./HOLLOW CORE	3	
106	2'-6" x 6'-8"	---	BEDROOM 1	INT./HOLLOW CORE	3	
107	5'-0" x 6'-8"	---	CLOSET	INT./HOLLOW CORE	4	SLIDING
108	3'-0" x 6'-8"	---	ENTRY UNIT	EXT./INSULATED	1	

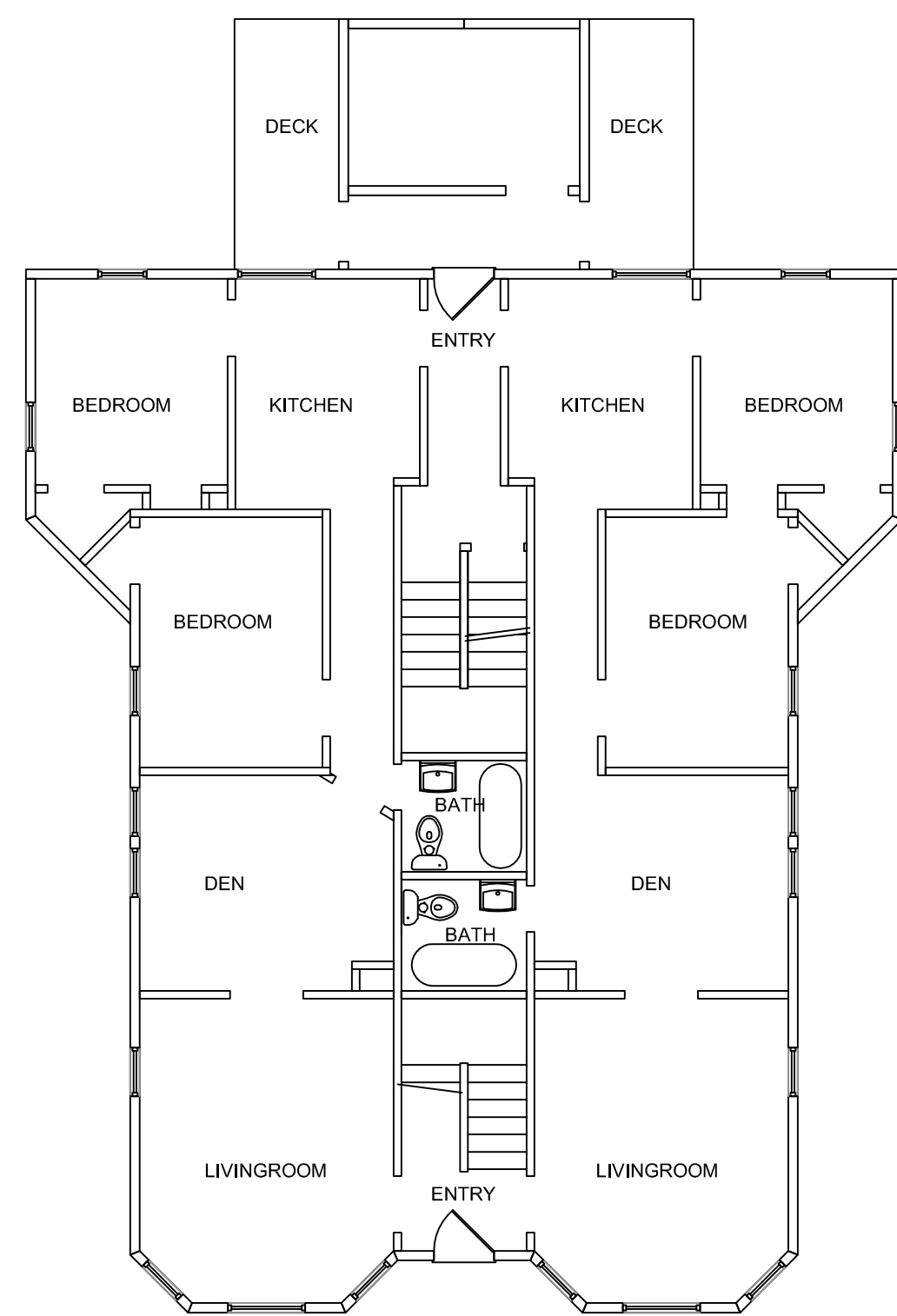
NOTE: DOORS 102-108 ARE TYPICAL FOR EACH UNIT, EACH FLOOR



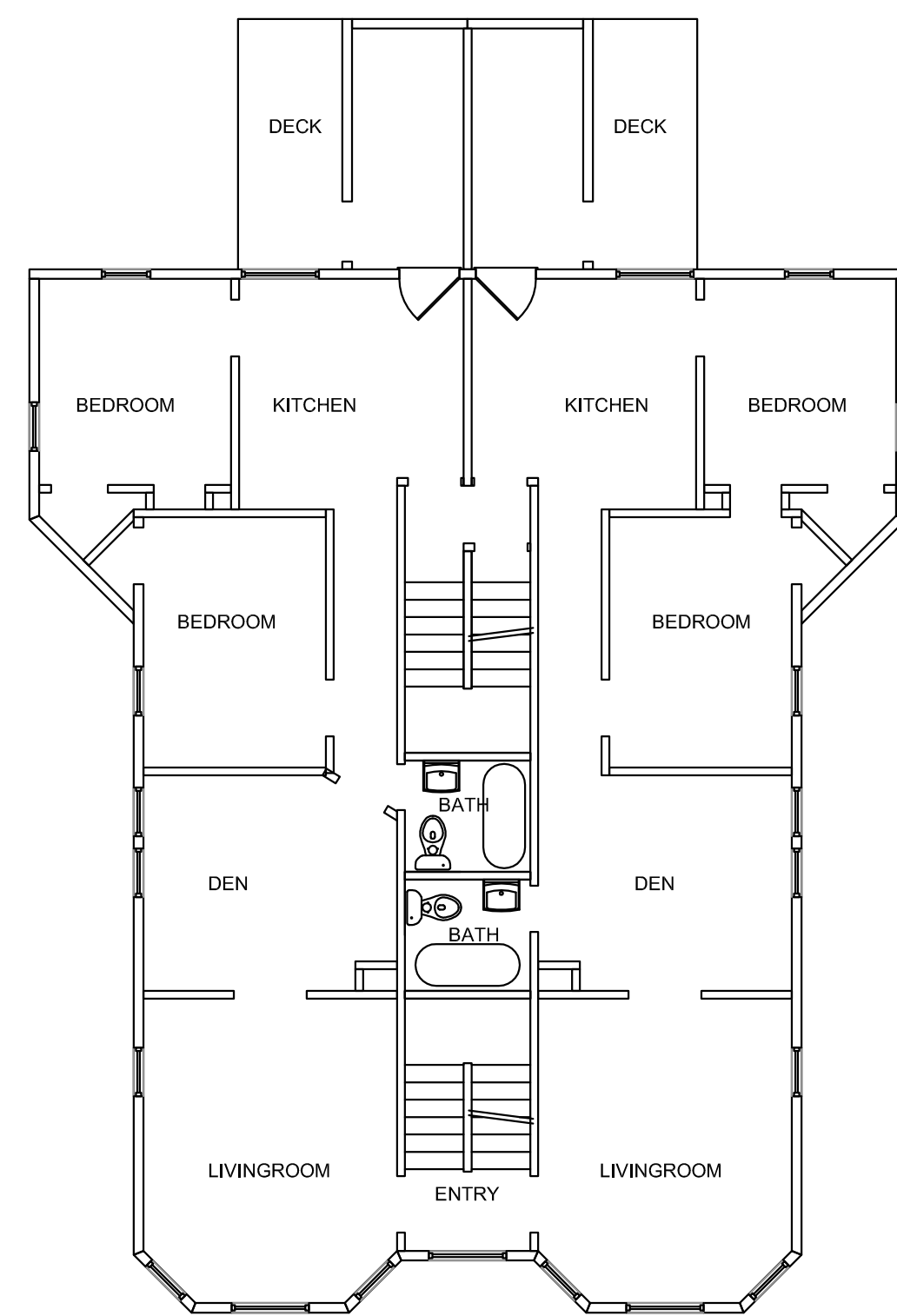
WINDOWS



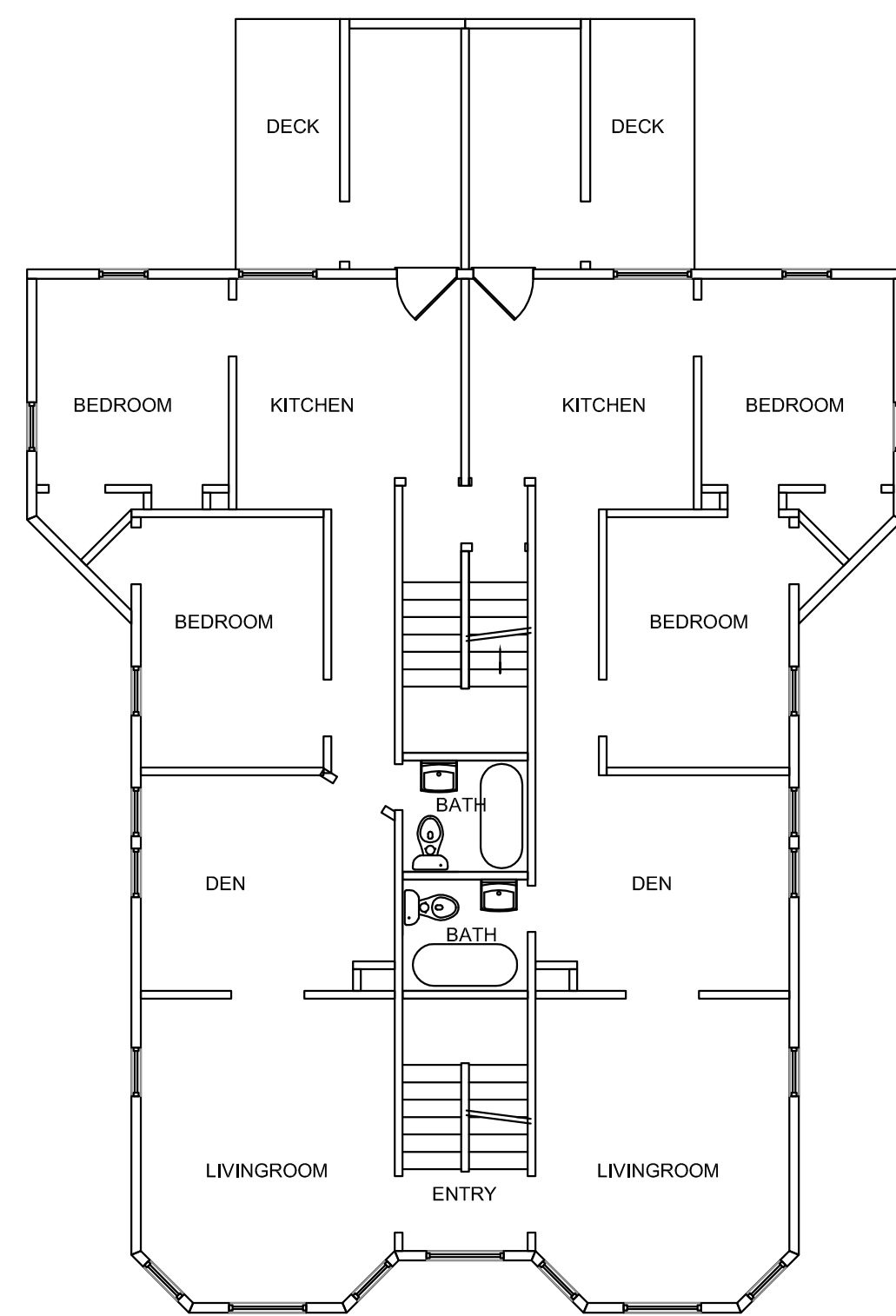
DOOR TYPES



FIRST FLOOR
Scale: 1/8" = 1'-0"

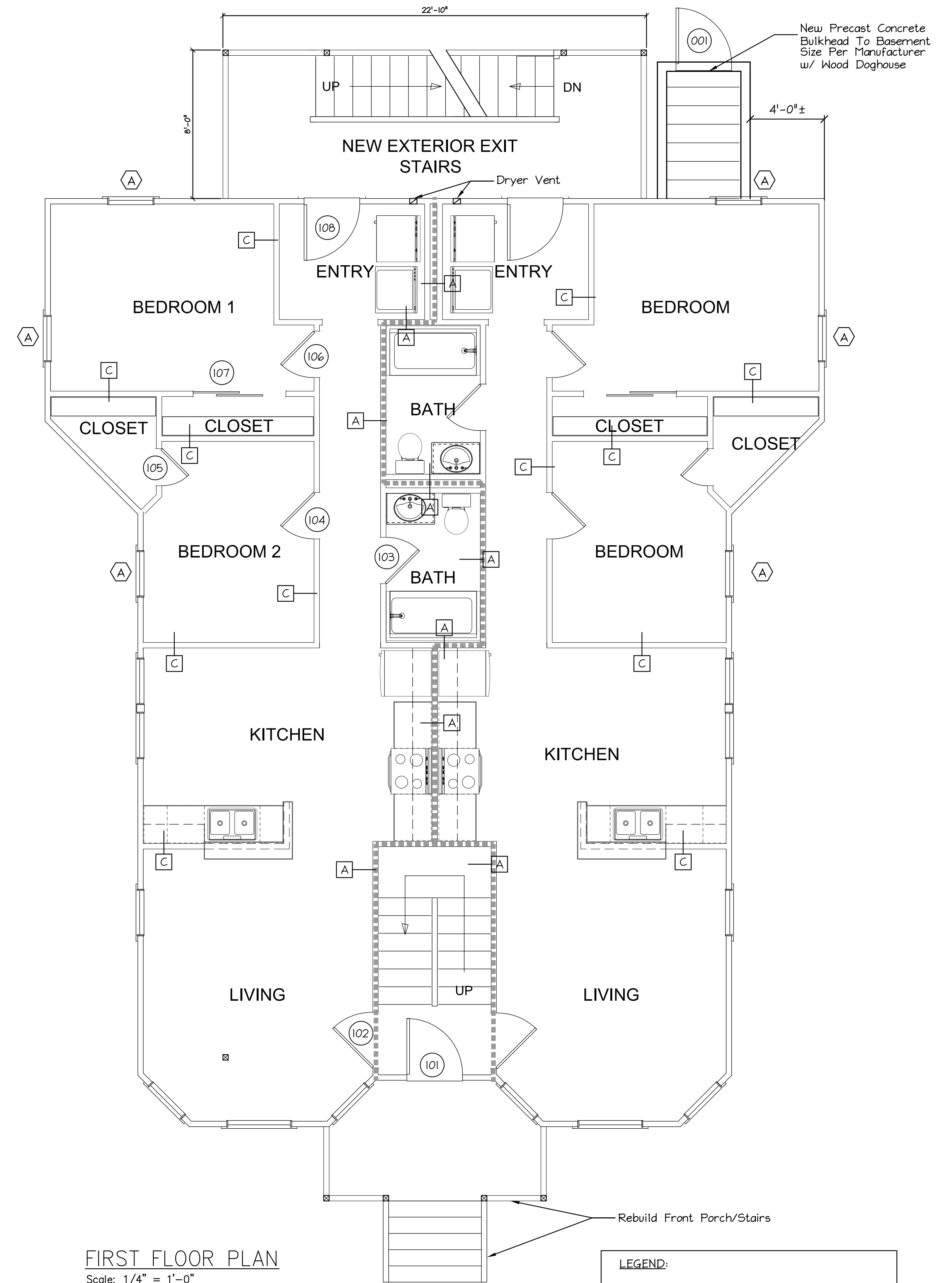


SECOND FLOOR
Scale: 1/8" = 1'-0"



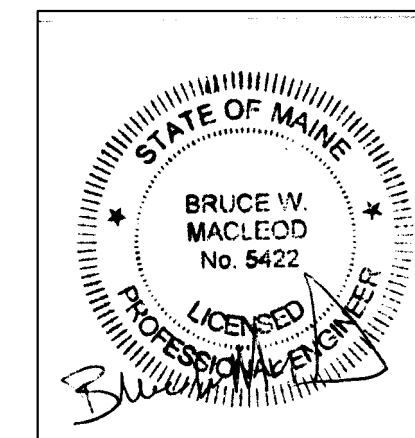
THIRD FLOOR
Scale: 1/8" = 1'-0"

EXISTING FLOOR PLANS
Scale: 1/4" = 1'-0"



FIRST FLOOR PLAN
Scale: 1/4" = 1'-0"

LEGEND:
 ===== = RATED WALL TYPE "A"
 Interior Partitions = Type "C" Unless Noted
 Exterior Walls = Existing to Remain.
 Repairs to Match Existing.



MacLeod
Structural Engineers, PA
90 Bridge Street Ste252 Westbrook, Maine 04038 207.839.0980
732 Forest Ave.
Portland, Maine

TITLE: First Floor Plan

DATE: 4/25/17 DRAWN BY: BIM DRAWING NUMBER: A-1.0
SCALE: as noted PROJ. NO: 2017-031