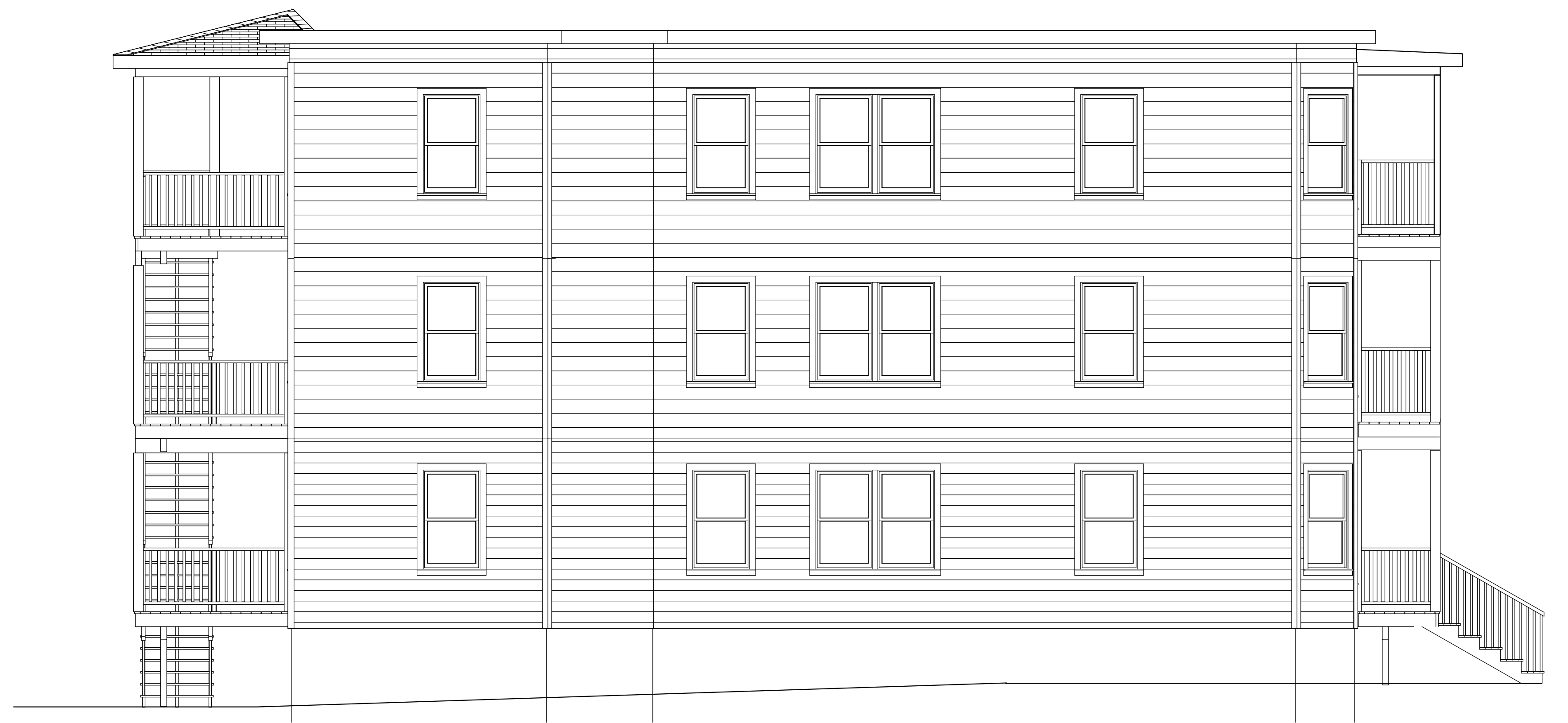




FRONT ELEVATION
Scale: 1/4" = 1'-0"



LEFT SIDE ELEVATION
Scale: 1/4" = 1'-0"

New Exterior Stairs
See Details, Sht. A3 & S3



REAR ELEVATION
Scale: 1/4" = 1'-0"



RIGHT SIDE ELEVATION
Scale: 1/4" = 1'-0"

MacLeod Structural Engineers, PA		
90 Bridge Street Ste252 Westbrook, Maine 04038 207.839.0980		
732 Forest Ave.		
Portland, Maine		
TITLE: EXTERIOR ELEVATIONS		
DATE: 4/25/17	DRAWN BY: BIM	DRAWING NUMBER:
SCALE: as noted	PROJ. NO: 2017-031	A-2.0