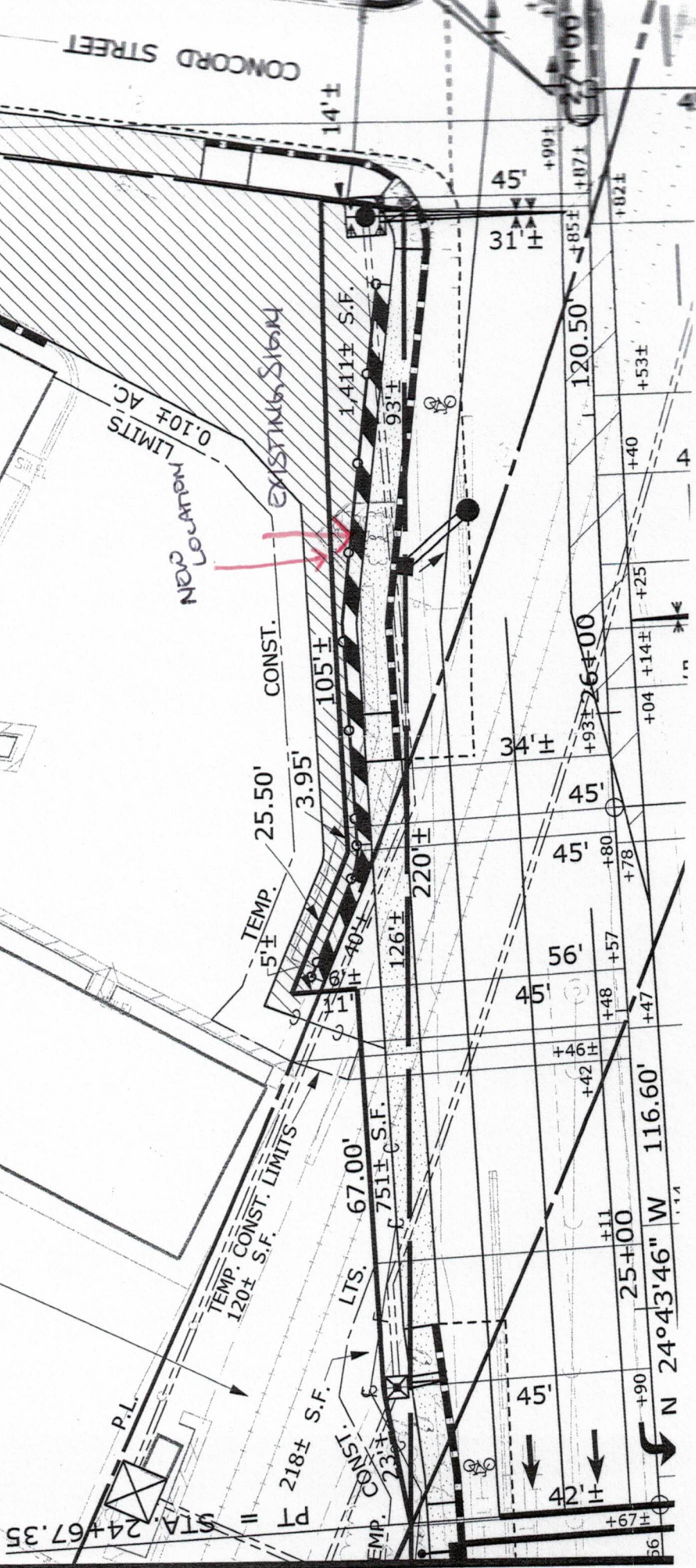


& PARTIAL TOPOGRAPHY SURVEY
 FOR JABBAR ESSA
 RECORD OWNER DELTA REALTY, LLC
 BY JAMES D. MADEAU, LLC
 DATED JANUARY 31, 2012
 LAST REVISION DATE - FEBRUARY 22, 2012
 JOB NO. - 2111269BR1
 UNRECORDED

DELTA REALTY LLC
 PARCEL NO. (23)
 LAND TAKEN = 1,411± S.F. = 0.10± AC. (1)
 TEMP. CONST. RIGHTS = 27,443± S.F.
 TOTAL AREA = 26,032± S.F. (CALC.)
 REM. AREA =

PORTLAND TERMINAL COMPANY
 PARCEL NO. (20)
 LAND = 751± S.F.
 (EASE. FOR HIGHWAY PURPOSES)
 TEMP. CONST. RIGHTS = 338± S.F. (2)
 TOTAL AREA = VAST HOLDINGS



CONCORD STREET

MAIN
 LOCATION
 LIMITS

EXISTING SIGN

N 24°43'46" W 116.60'

25±00

116.60'

45'

45'

45'

45'

45'

45'

45'

45'