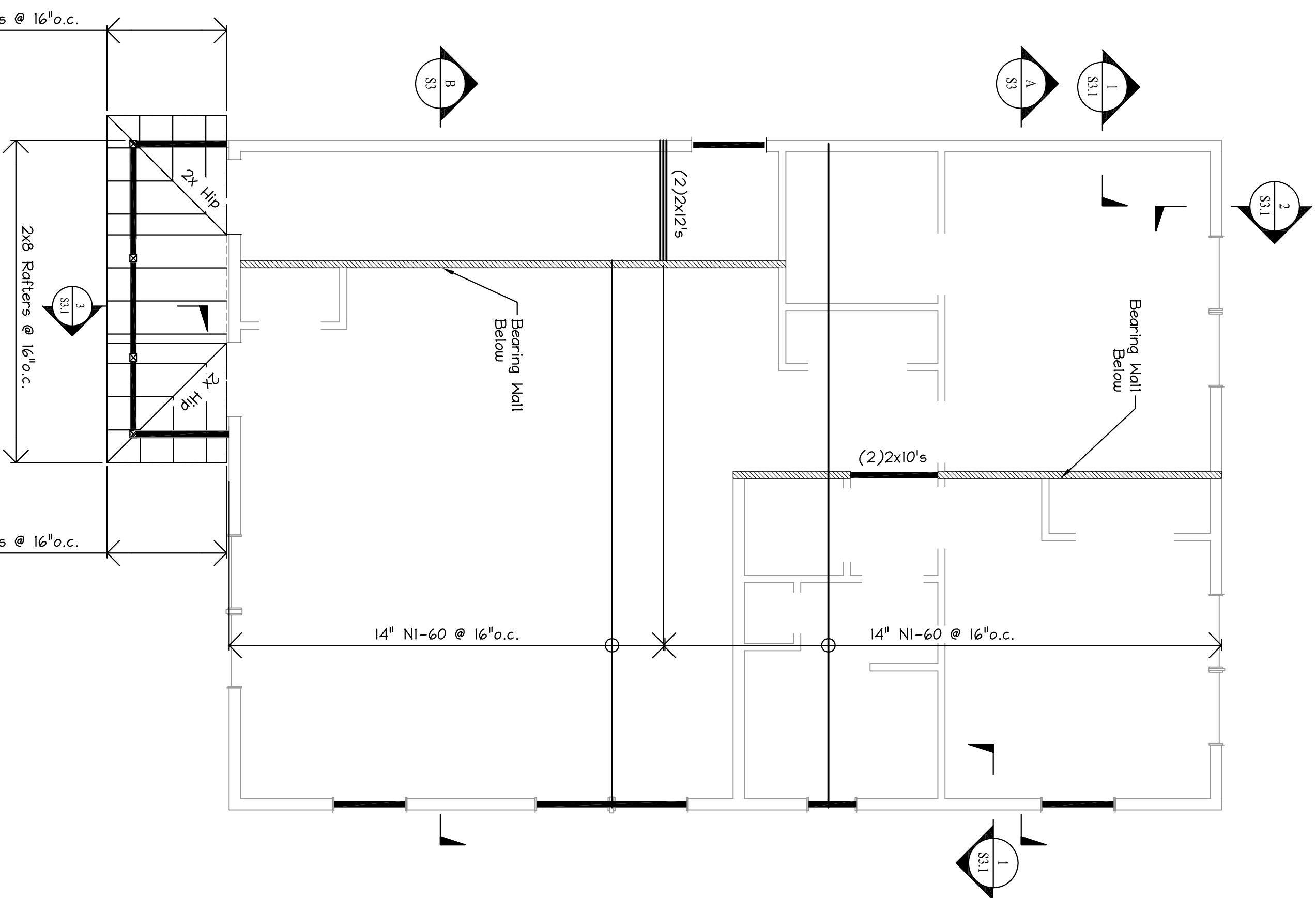
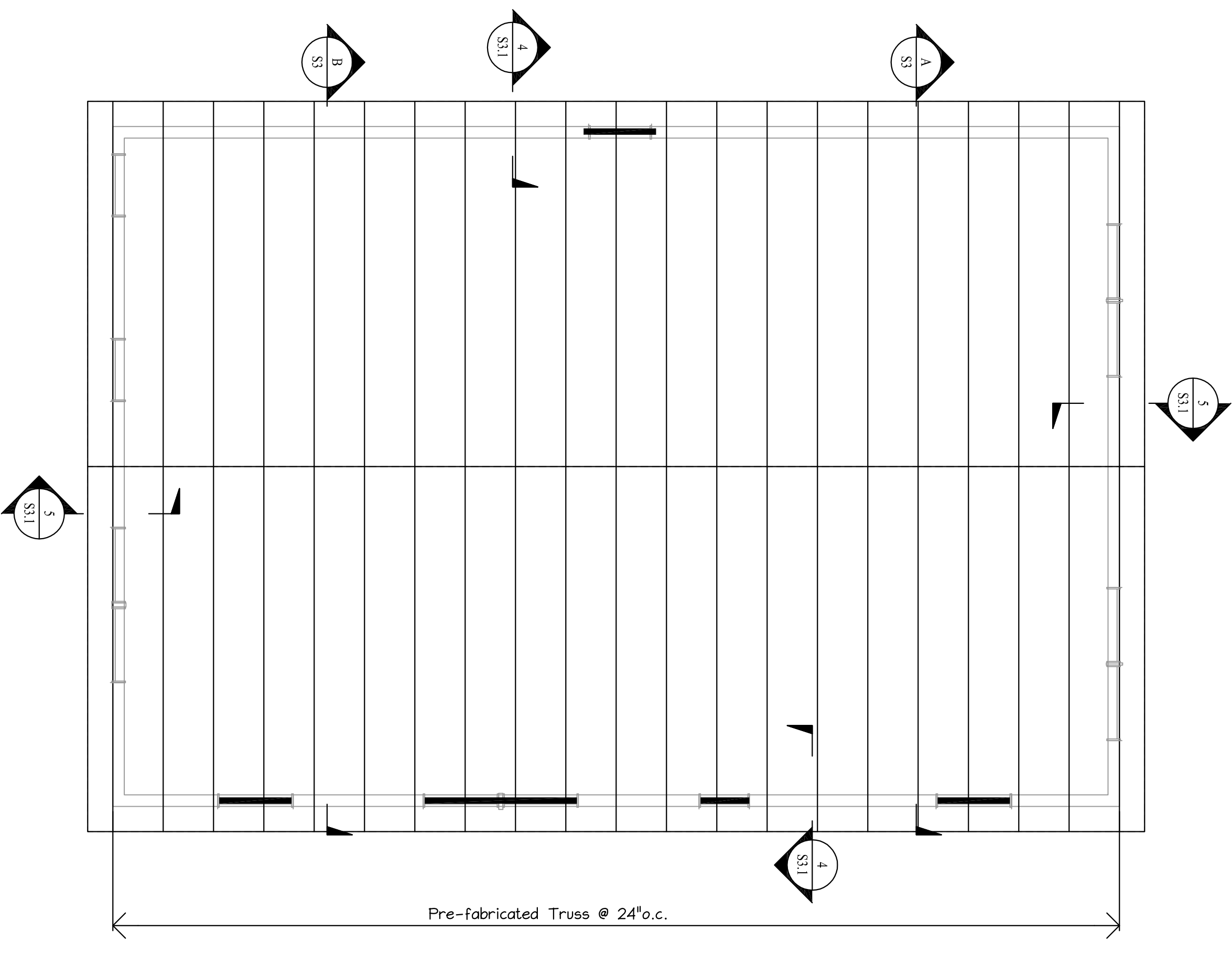


FIRST FLOOR FRAMING PLAN
Scale: 1/4" = 1'-0"



SECOND FLOOR FRAMING PLAN
Scale: 1/4" = 1'-0"

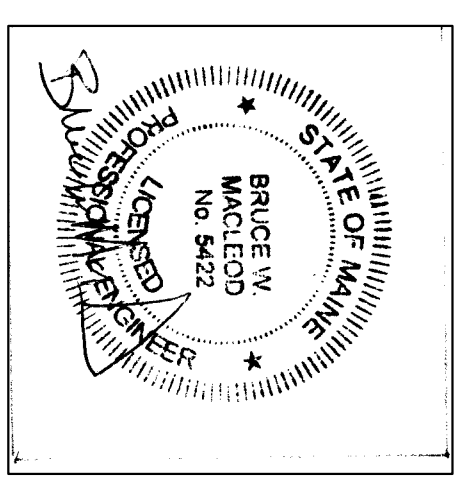


ROOF FRAMING PLAN
Scale: 1/4" = 1'-0"

OPENING HEADER SCHEDULE			
SPAN	DESCRIPTION	JACK STUDS (NUMBER)	KING STUDS (NUMBER)
3FT	(3) 2x8's	(1) Stud	(1) Studs
4FT	(3) 2x10's	(1) Stud	(1) Studs
6FT	(3) 2x12's	(2) Stud	(2) Studs
8FT	3 1/2"x4 1/4" LVL	(2) Stud	(2) Studs
10FT	3 1/2"x11 1/4" LVL	(3) Stud	N / A
12FT	3 1/2"x11 1/4" LVL	(3) Stud	N / A
15FT	5 1/4"x11 1/4" LVL	(3) Stud	N / A

NOTE: THIS TABLE MAY VARY FROM THE IRC. THIS TABLE HAS BEEN ENGINEERED FOR THE DESIGN CRITERIA NOTED HEREIN AND FOR THE LOADS IMPOSED.

FOR PERMIT
ISSUED
3/13/17



MacLeod
Structural Engineers Inc.
90 Bridge Street, Suite 202, Westbrook, Maine 04092, 207.239.0980
167-169 Woodford Street
Portland, Maine

Permit No. _____

DATE: 1/27/17
DRAWN BY: BWM
SCALE: as noted

TITLE: Floor & Roof Framing Plans
DRAWING NUMBER: S-2.0