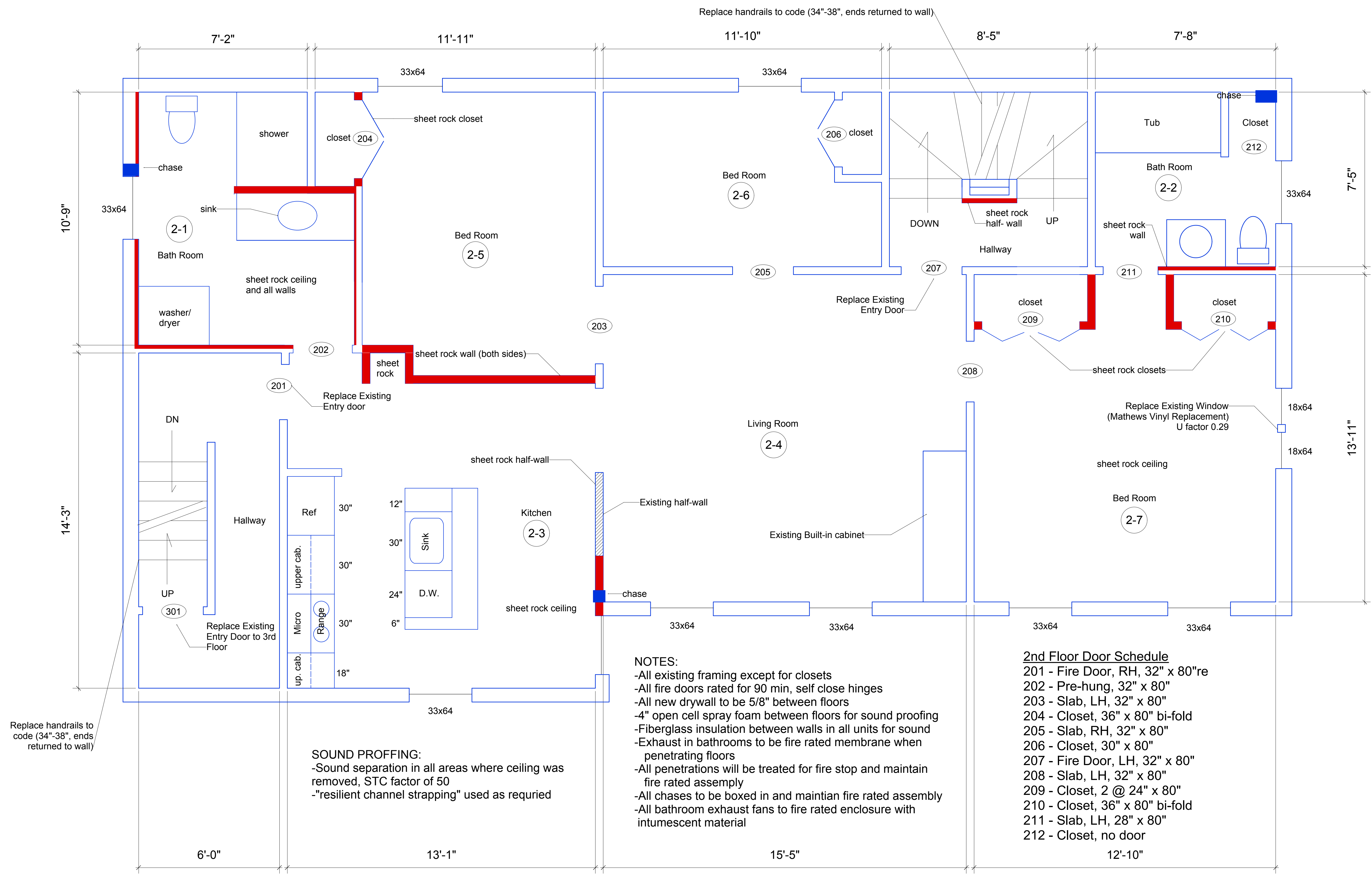


14 Saunders Street
Portland, Maine



SOUND PROFFING:
 -Sound separation in all areas where ceiling was removed, STC factor of 50
 -"resilient channel strapping" used as required

NOTES:
 -All existing framing except for closets
 -All fire doors rated for 90 min, self close hinges
 -All new drywall to be 5/8" between floors
 -4" open cell spray foam between floors for sound proofing
 -Fiberglass insulation between walls in all units for sound
 -Exhaust in bathrooms to be fire rated membrane when penetrating floors
 -All penetrations will be treated for fire stop and maintain fire rated assembly
 -All chases to be boxed in and maintain fire rated assembly
 -All bathroom exhaust fans to fire rated enclosure with intumescent material

2nd Floor Door Schedule

| | |
|-----|------------------------------|
| 201 | - Fire Door, RH, 32" x 80"re |
| 202 | - Pre-hung, 32" x 80" |
| 203 | - Slab, LH, 32" x 80" |
| 204 | - Closet, 36" x 80" bi-fold |
| 205 | - Slab, RH, 32" x 80" |
| 206 | - Closet, 30" x 80" |
| 207 | - Fire Door, LH, 32" x 80" |
| 208 | - Slab, LH, 32" x 80" |
| 209 | - Closet, 2 @ 24" x 80" |
| 210 | - Closet, 36" x 80" bi-fold |
| 211 | - Slab, LH, 28" x 80" |
| 212 | - Closet, no door |

█ = 5/8" sheet rock existing walls, exposed
█ = Existing Framing

2nd Floor Plan
1/2" = 1'-0"