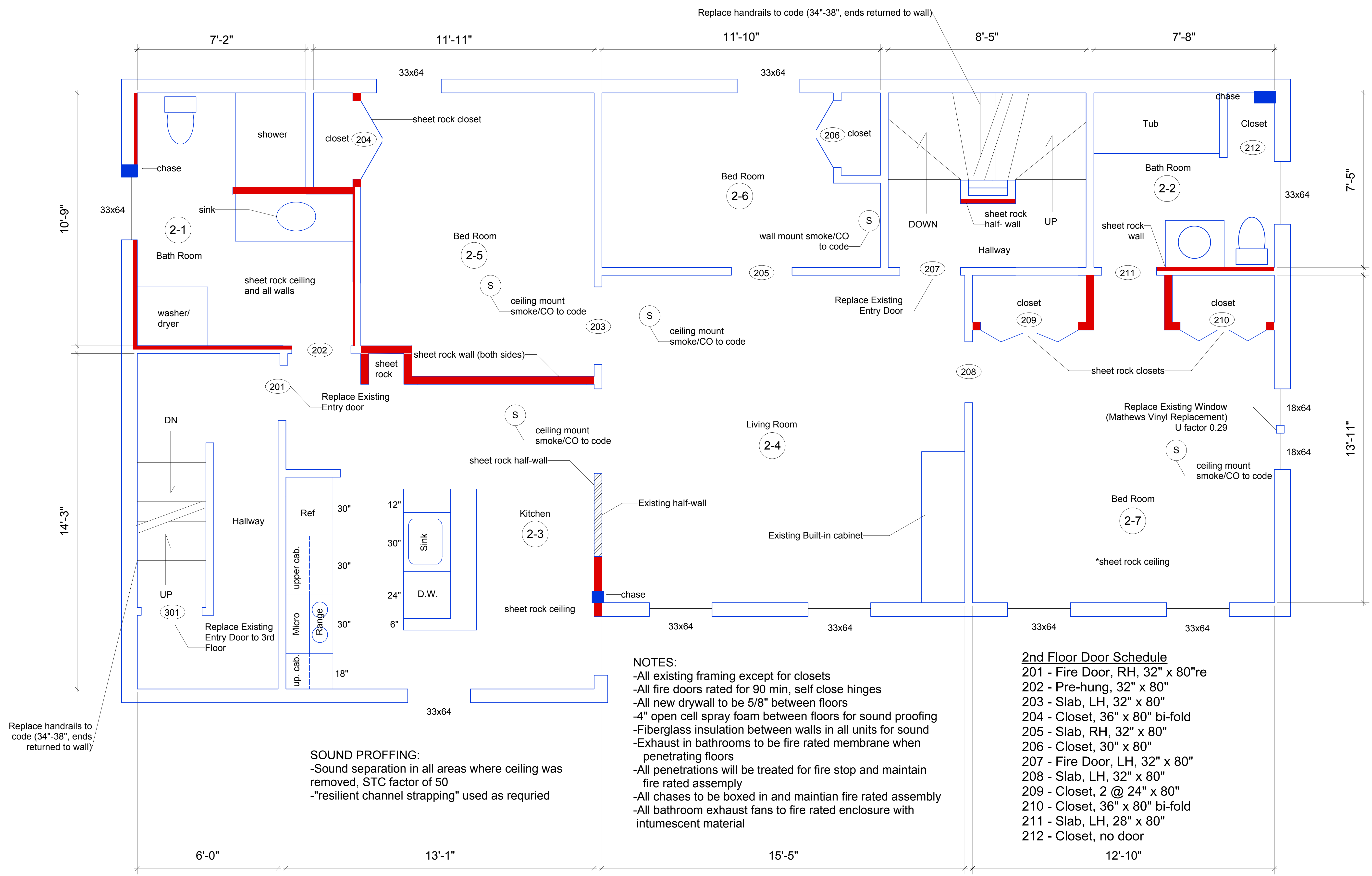


**14 Saunders Street
 Portland, Maine**

1st Floor Plan
 1/2" = 1'-0"

14 Saunders Street
Portland, Maine



SOUND PROFFING:
 -Sound separation in all areas where ceiling was removed, STC factor of 50
 -"resilient channel strapping" used as required

NOTES:
 -All existing framing except for closets
 -All fire doors rated for 90 min, self close hinges
 -All new drywall to be 5/8" between floors
 -4" open cell spray foam between floors for sound proofing
 -Fiberglass insulation between walls in all units for sound
 -Exhaust in bathrooms to be fire rated membrane when penetrating floors
 -All penetrations will be treated for fire stop and maintain fire rated assembly
 -All chases to be boxed in and maintain fire rated assembly
 -All bathroom exhaust fans to fire rated enclosure with intumescent material

2nd Floor Door Schedule

201	- Fire Door, RH, 32" x 80"re
202	- Pre-hung, 32" x 80"
203	- Slab, LH, 32" x 80"
204	- Closet, 36" x 80" bi-fold
205	- Slab, RH, 32" x 80"
206	- Closet, 30" x 80"
207	- Fire Door, LH, 32" x 80"
208	- Slab, LH, 32" x 80"
209	- Closet, 2 @ 24" x 80"
210	- Closet, 36" x 80" bi-fold
211	- Slab, LH, 28" x 80"
212	- Closet, no door

Legend:
█ = 5/8" sheet rock existing walls, exposed
█ = Existing Framing

2nd Floor Plan
1/2" = 1'-0"

