

█ = 5/8" sheet rock existing walls, exposed

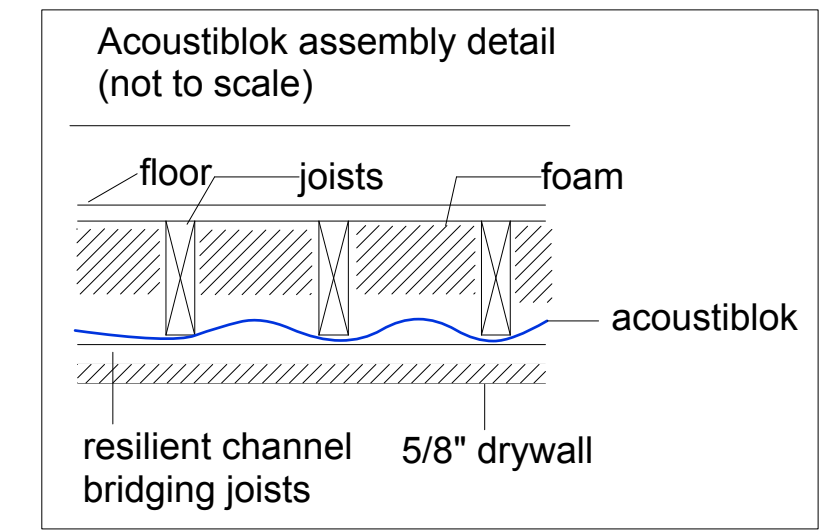
— = Existing Framing

- NOTES:**
- All existing framing except for closets
 - All fire doors rated for 90 min, self close hinges
 - All new drywall to be 5/8" between floors
 - 4" open cell spray foam between floors for sound proofing
 - Fiberglass insulation between walls in all units for sound proofing
 - Exhaust in bathrooms to be fire rated membrane when penetrating floors
 - All penetrations will be treated for fire stop and maintain fire rated assembly
 - All chases to be boxed in and maintain fire rated assembly
 - All bathroom exhaust fans to fire rated enclosure with intumescent material

SOUND PROFFING:

- Sound separation in all areas where ceiling was removed, STC factor of 50, "Acoustiblok"

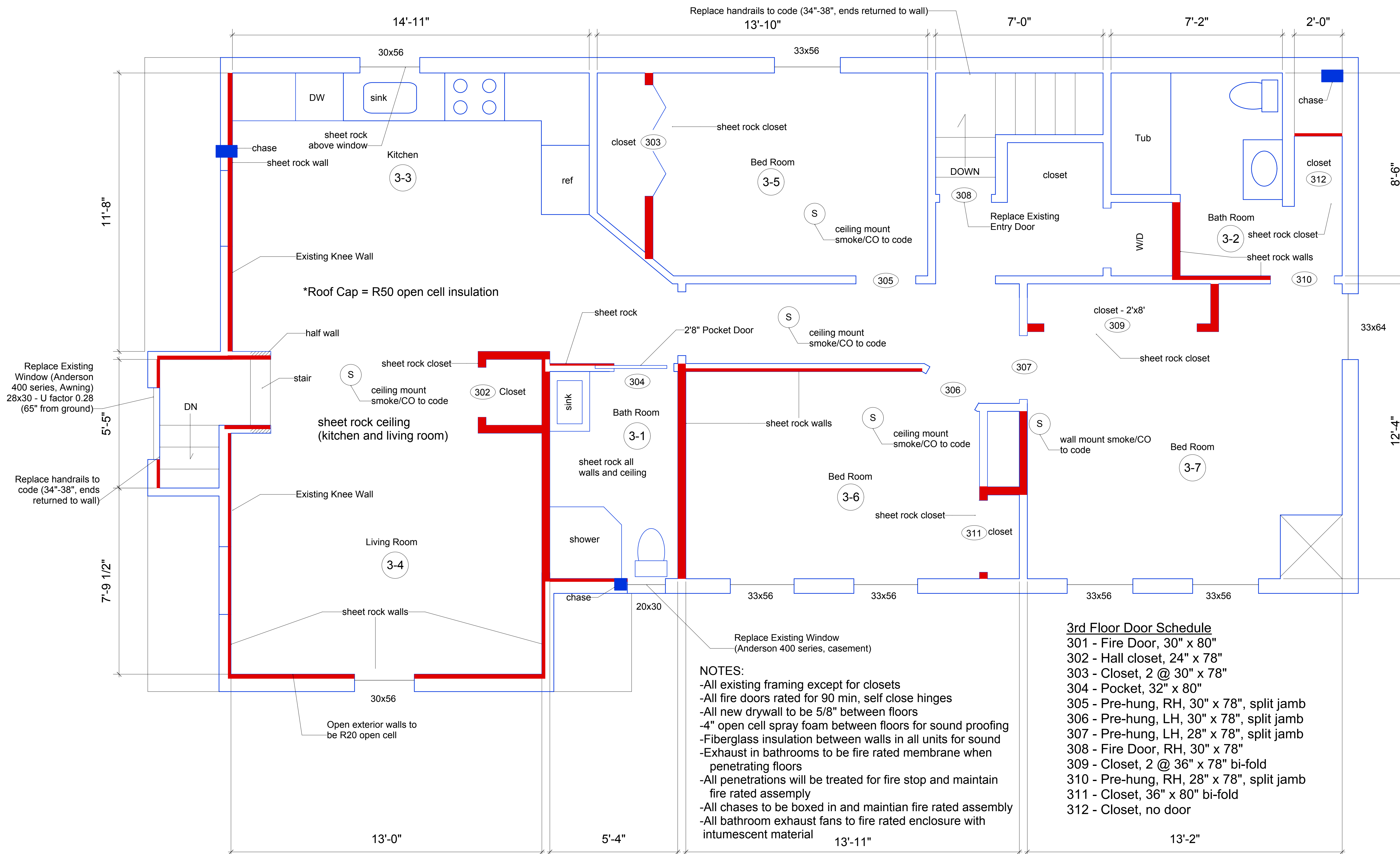
- 1st Floor Door Schedule**
- 101 - Fire Door, RH, 32" x 80"
 - 102 - Pre-hung, RH, 32" x 80"
 - 103 - Pre-hung, LH, 32" x 78"
 - 104 - double, 2 @ 24" x 78"
 - 105 - pocket, 32" x 80"
 - 106 - pocket, 32" x 80"
 - 107 - Fire door, RH, 32" x 80"
 - 108 - Pre-hung, RH, 32" x 80"
 - 109 - Closet, 2 @ 24" x 80"
 - 110 - Closet, 2 @ 24" x 80"
 - 111 - Entry door with glass (Existing)
 - 112 - Closet, 36" x 80" bi-fold
 - 113 - Closet, 2 @ 24" X 80"
 - 114 - Fire rated door to basement
 - 115 - Existing exterior door



14 Saunders Street
Portland, Maine

1st Floor Plan
1/2" = 1'-0"

14 Saunders Street
Portland, Maine



- 3rd Floor Door Schedule**
- 301 - Fire Door, 30" x 80"
 - 302 - Hall closet, 24" x 78"
 - 303 - Closet, 2 @ 30" x 78"
 - 304 - Pocket, 32" x 80"
 - 305 - Pre-hung, RH, 30" x 78", split jamb
 - 306 - Pre-hung, LH, 30" x 78", split jamb
 - 307 - Pre-hung, LH, 28" x 78", split jamb
 - 308 - Fire Door, RH, 30" x 78"
 - 309 - Closet, 2 @ 36" x 78" bi-fold
 - 310 - Pre-hung, RH, 28" x 78", split jamb
 - 311 - Closet, 36" x 80" bi-fold
 - 312 - Closet, no door
- NOTES:**
- All existing framing except for closets
 - All fire doors rated for 90 min, self close hinges
 - All new drywall to be 5/8" between floors
 - 4" open cell spray foam between floors for sound proofing
 - Fiberglass insulation between walls in all units for sound
 - Exhaust in bathrooms to be fire rated membrane when penetrating floors
 - All penetrations will be treated for fire stop and maintain fire rated assembly
 - All chases to be boxed in and maintain fire rated assembly
 - All bathroom exhaust fans to fire rated enclosure with intumescent material

= 5/8" sheet rock existing walls, exposed
 = Existing Framing

3rd Floor Plan
1/2" = 1'-0"