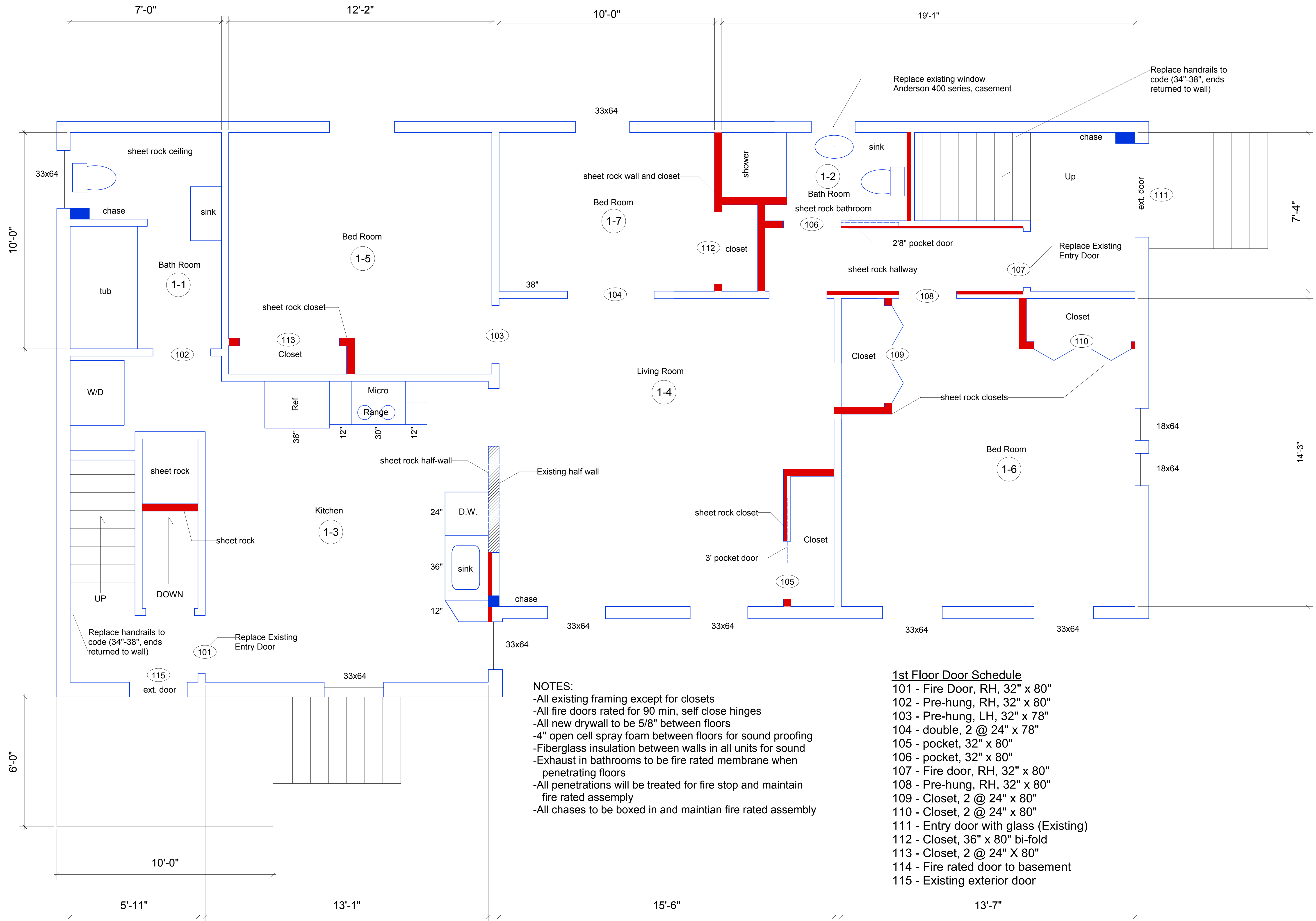


█ = 5/8" sheet rock existing walls, exposed

— = Existing Framing



NOTES:
 -All existing framing except for closets
 -All fire doors rated for 90 min, self close hinges
 -All new drywall to be 5/8" between floors
 -4" open cell spray foam between floors for sound proofing
 -Fiberglass insulation between walls in all units for sound
 -Exhaust in bathrooms to be fire rated membrane when penetrating floors
 -All penetrations will be treated for fire stop and maintain fire rated assembly
 -All chases to be boxed in and maintain fire rated assembly

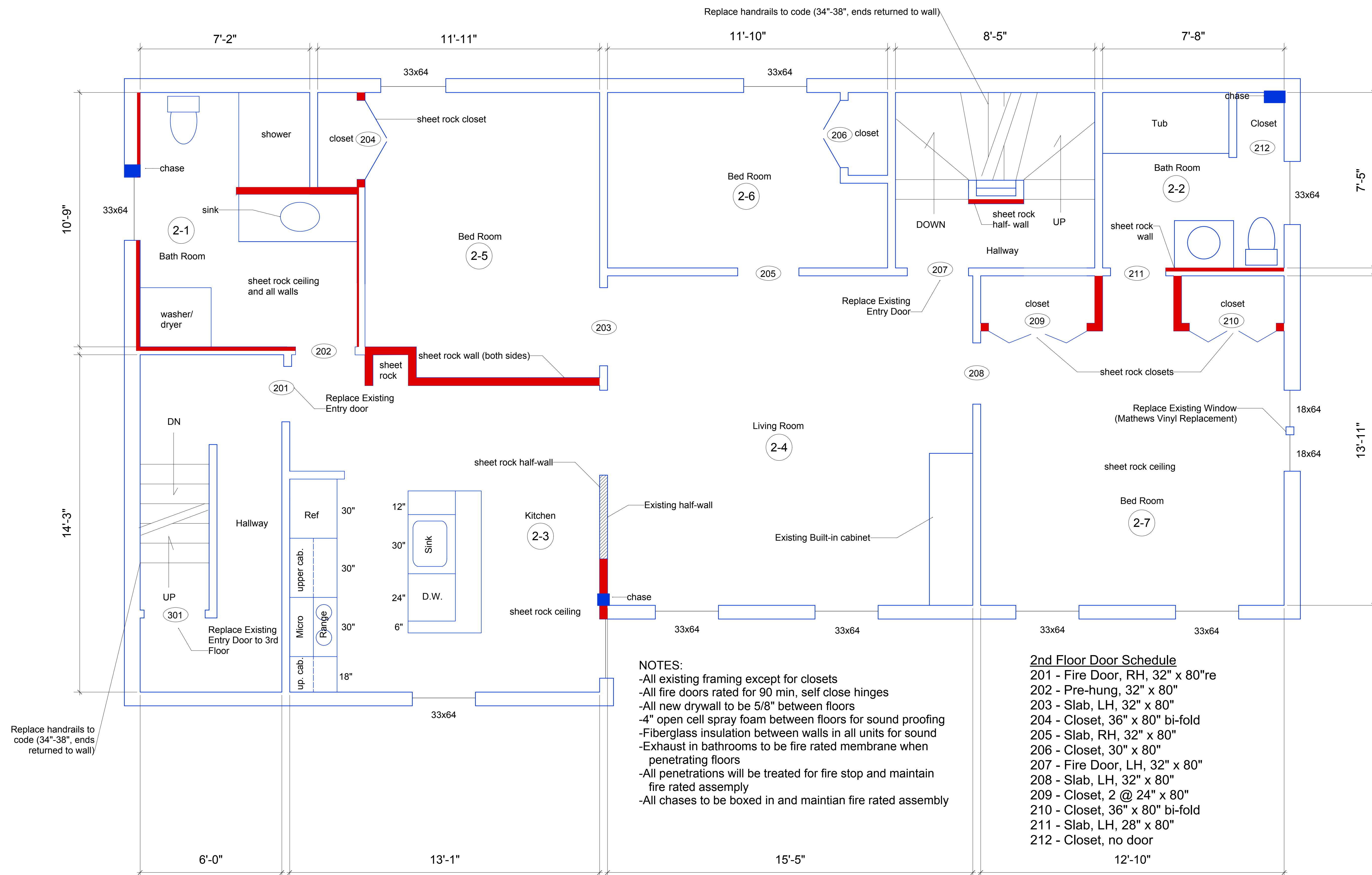
1st Floor Door Schedule

- 101 - Fire Door, RH, 32" x 80"
- 102 - Pre-hung, RH, 32" x 80"
- 103 - Pre-hung, LH, 32" x 78"
- 104 - double, 2 @ 24" x 78"
- 105 - pocket, 32" x 80"
- 106 - pocket, 32" x 80"
- 107 - Fire door, RH, 32" x 80"
- 108 - Pre-hung, RH, 32" x 80"
- 109 - Closet, 2 @ 24" x 80"
- 110 - Closet, 2 @ 24" x 80"
- 111 - Entry door with glass (Existing)
- 112 - Closet, 36" x 80" bi-fold
- 113 - Closet, 2 @ 24" X 80"
- 114 - Fire rated door to basement
- 115 - Existing exterior door

14 Saunders Street
 Portland, Maine

1st Floor Plan
 1/2" = 1'-0"

14 Saunders Street
Portland, Maine



- NOTES:**
- All existing framing except for closets
 - All fire doors rated for 90 min, self close hinges
 - All new drywall to be 5/8" between floors
 - 4" open cell spray foam between floors for sound proofing
 - Fiberglass insulation between walls in all units for sound
 - Exhaust in bathrooms to be fire rated membrane when penetrating floors
 - All penetrations will be treated for fire stop and maintain fire rated assembly
 - All chases to be boxed in and maintain fire rated assembly

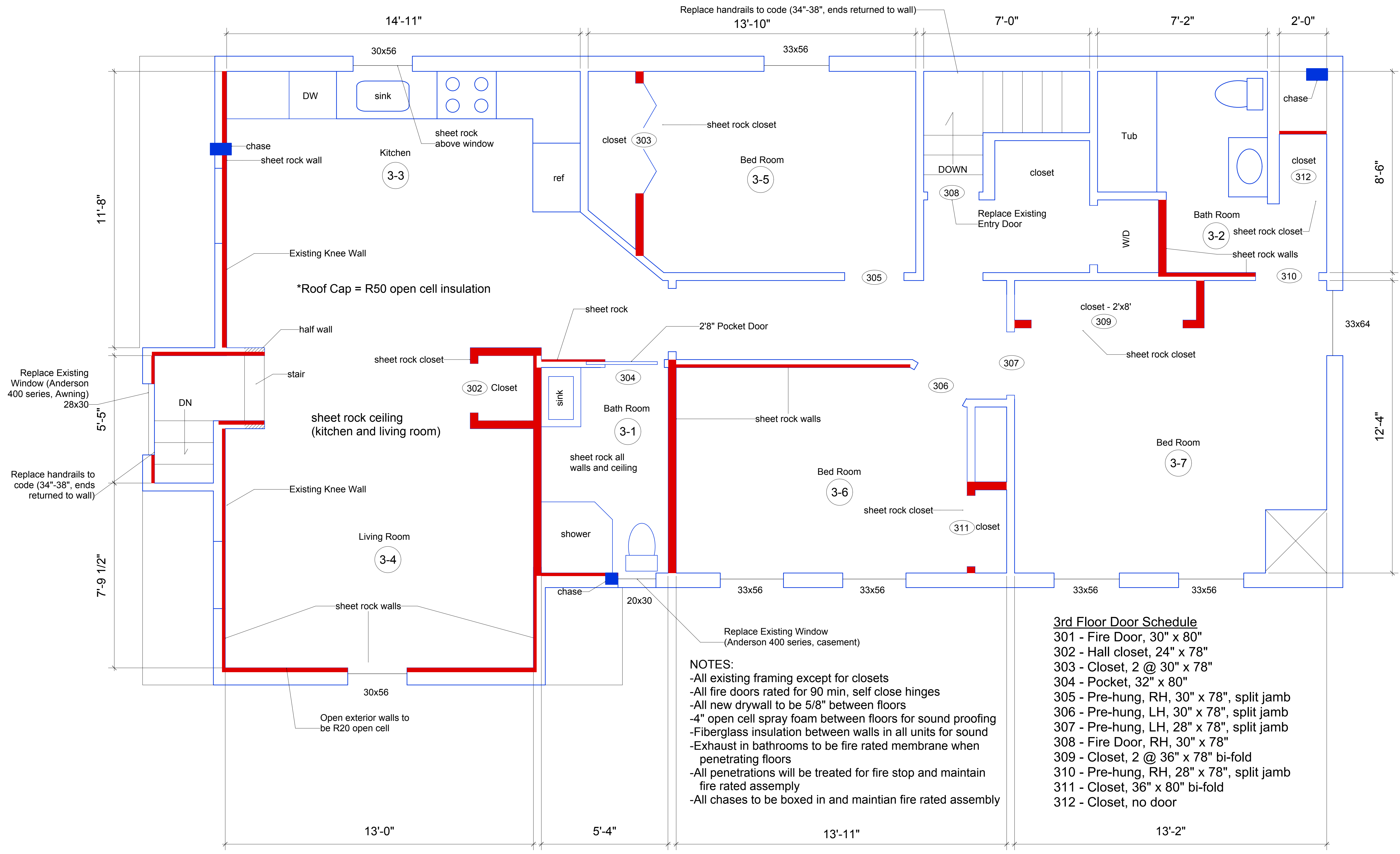
2nd Floor Door Schedule

201	- Fire Door, RH, 32" x 80"re
202	- Pre-hung, 32" x 80"
203	- Slab, LH, 32" x 80"
204	- Closet, 36" x 80" bi-fold
205	- Slab, RH, 32" x 80"
206	- Closet, 30" x 80"
207	- Fire Door, LH, 32" x 80"
208	- Slab, LH, 32" x 80"
209	- Closet, 2 @ 24" x 80"
210	- Closet, 36" x 80" bi-fold
211	- Slab, LH, 28" x 80"
212	- Closet, no door

█ = 5/8" sheet rock existing walls, exposed
█ = Existing Framing

2nd Floor Plan
1/2" = 1'-0"

14 Saunders Street
Portland, Maine



- NOTES:**
- All existing framing except for closets
 - All fire doors rated for 90 min, self close hinges
 - All new drywall to be 5/8" between floors
 - 4" open cell spray foam between floors for sound proofing
 - Fiberglass insulation between walls in all units for sound
 - Exhaust in bathrooms to be fire rated membrane when penetrating floors
 - All penetrations will be treated for fire stop and maintain fire rated assembly
 - All chases to be boxed in and maintain fire rated assembly

3rd Floor Door Schedule

301	- Fire Door, 30" x 80"
302	- Hall closet, 24" x 78"
303	- Closet, 2 @ 30" x 78"
304	- Pocket, 32" x 80"
305	- Pre-hung, RH, 30" x 78", split jamb
306	- Pre-hung, LH, 30" x 78", split jamb
307	- Pre-hung, LH, 28" x 78", split jamb
308	- Fire Door, RH, 30" x 78"
309	- Closet, 2 @ 36" x 78" bi-fold
310	- Pre-hung, RH, 28" x 78", split jamb
311	- Closet, 36" x 80" bi-fold
312	- Closet, no door

█ = 5/8" sheet rock existing walls, exposed
— = Existing Framing

3rd Floor Plan
1/2" = 1'-0"