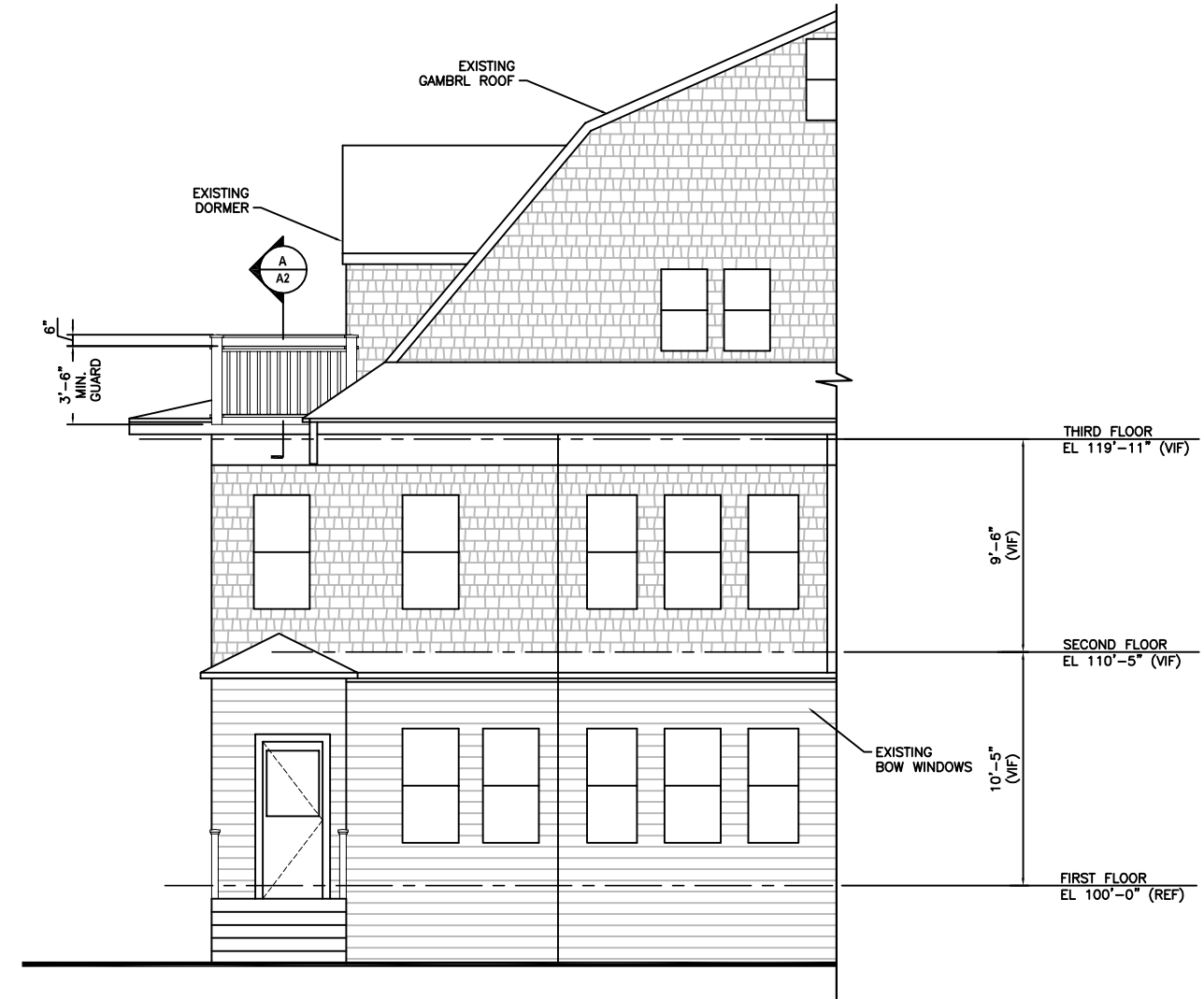
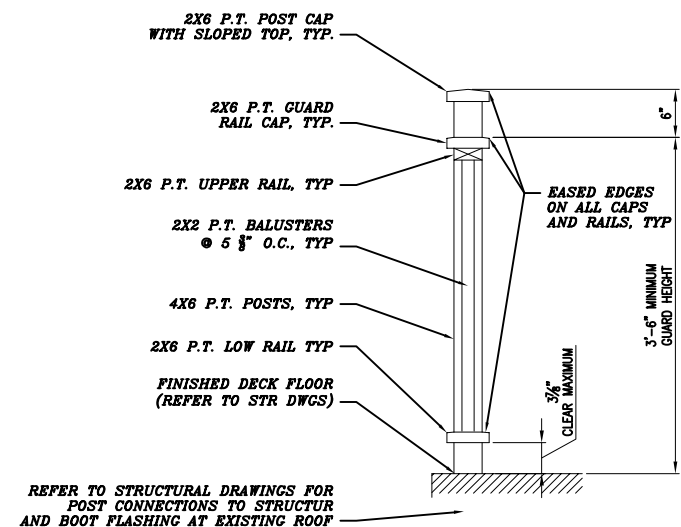


WEST ELEVATION
1/4" = 1'-0"



PARTIAL SOUTH ELEVATION
1/4" = 1'-0"



SECTION A
1" = 1'-0"

REV.	DATE	STATUS
0	0-22-14	ISSUED

OCTOBER 21, 2014
DECK ADDITION TO: EXISTING 3 STORY
40 NORWOOD STREET PORTLAND, MAINE
RESIDENTIAL BUILDING
 EXTERIOR ELEVATIONS & GUARD DETAIL

A2