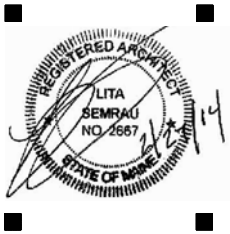


PORT CITY ARCHITECTURE

65 NEWBURY STREET
PORTLAND, ME 04101
207.761.9000
fax: 207.761.2010
info@portcityarch.com



Unit 2 = 771 s.f.
Occupant Load = 3 persons

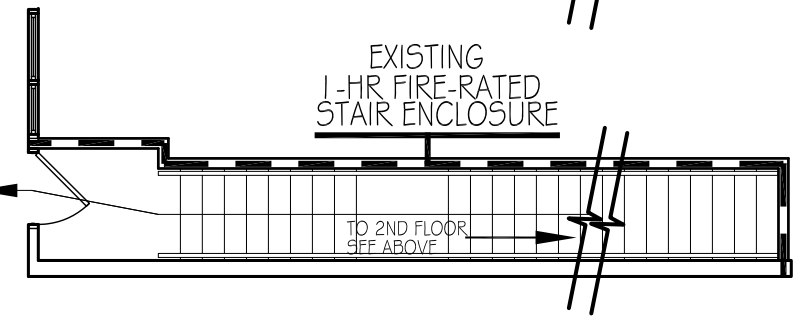
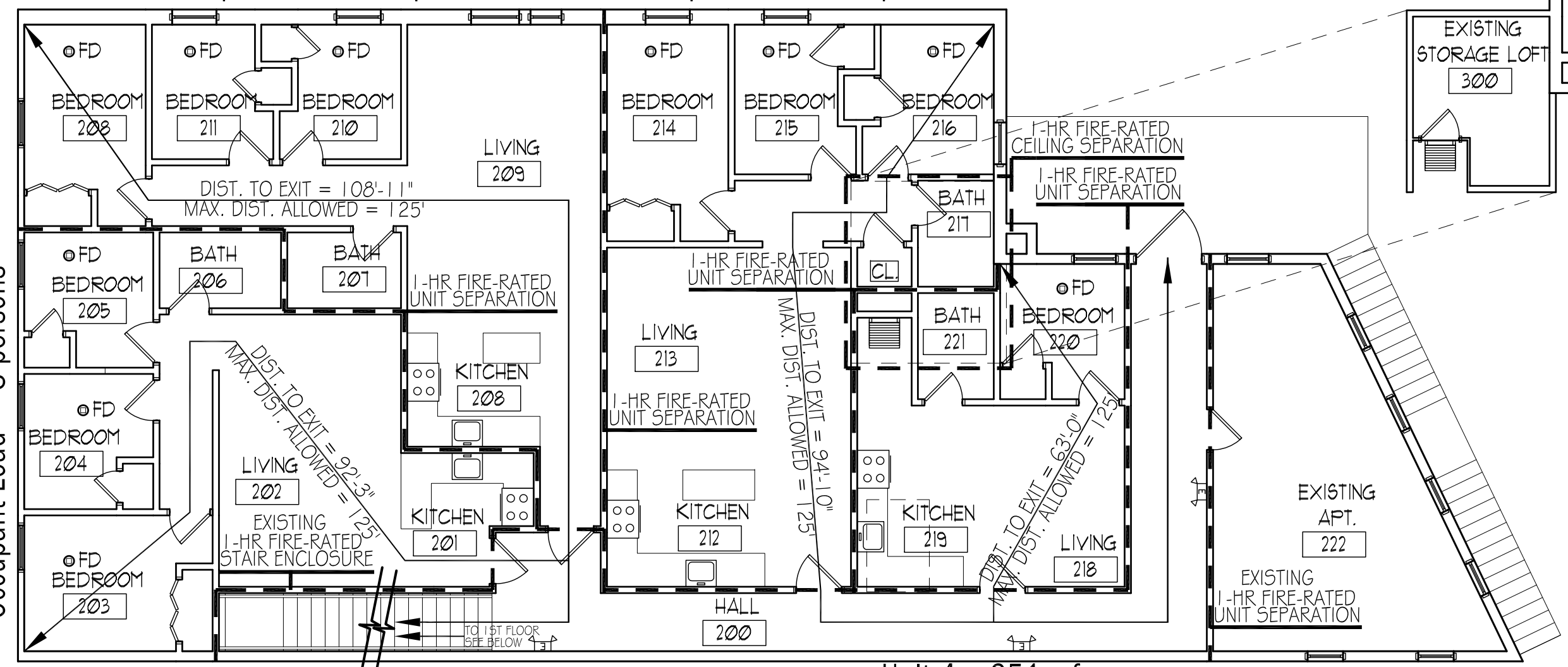
Unit 3 = 759 s.f.
Occupant Load = 3 persons

Unit 1 = 668 s.f.
Occupant Load = 3 persons

Unit 4 = 351 s.f.
Occupant Load = 1 person

EXISTING STORAGE LOFT
300

EXISTING APT.
222



671-675 Forest Ave.
Apartments
Portland, Maine

REVISIONS		
#	DATE	DESCRIPTION

Date Issued: MAY 21, 2014
 Project Number: 13118
 Drawing Scale: SHEET NAME
LIFE SAFETY
 Drawn By: JAP
 Checked By: LAS
LS1.0