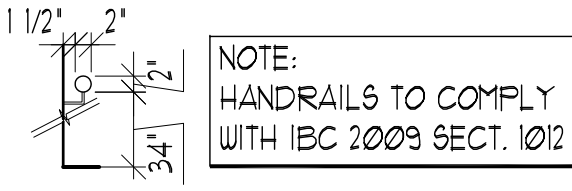
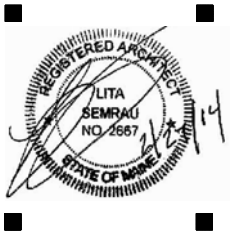


PORT CITY ARCHITECTURE

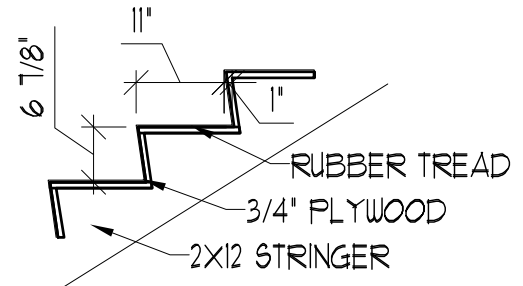
65 NEWBURY STREET  
PORTLAND, ME 04101  
207.761.9000  
fax: 207.761.2010  
info@portcityarch.com



NOTE:  
HANDRAILS TO COMPLY  
WITH IBC 2009 SECT. 1012

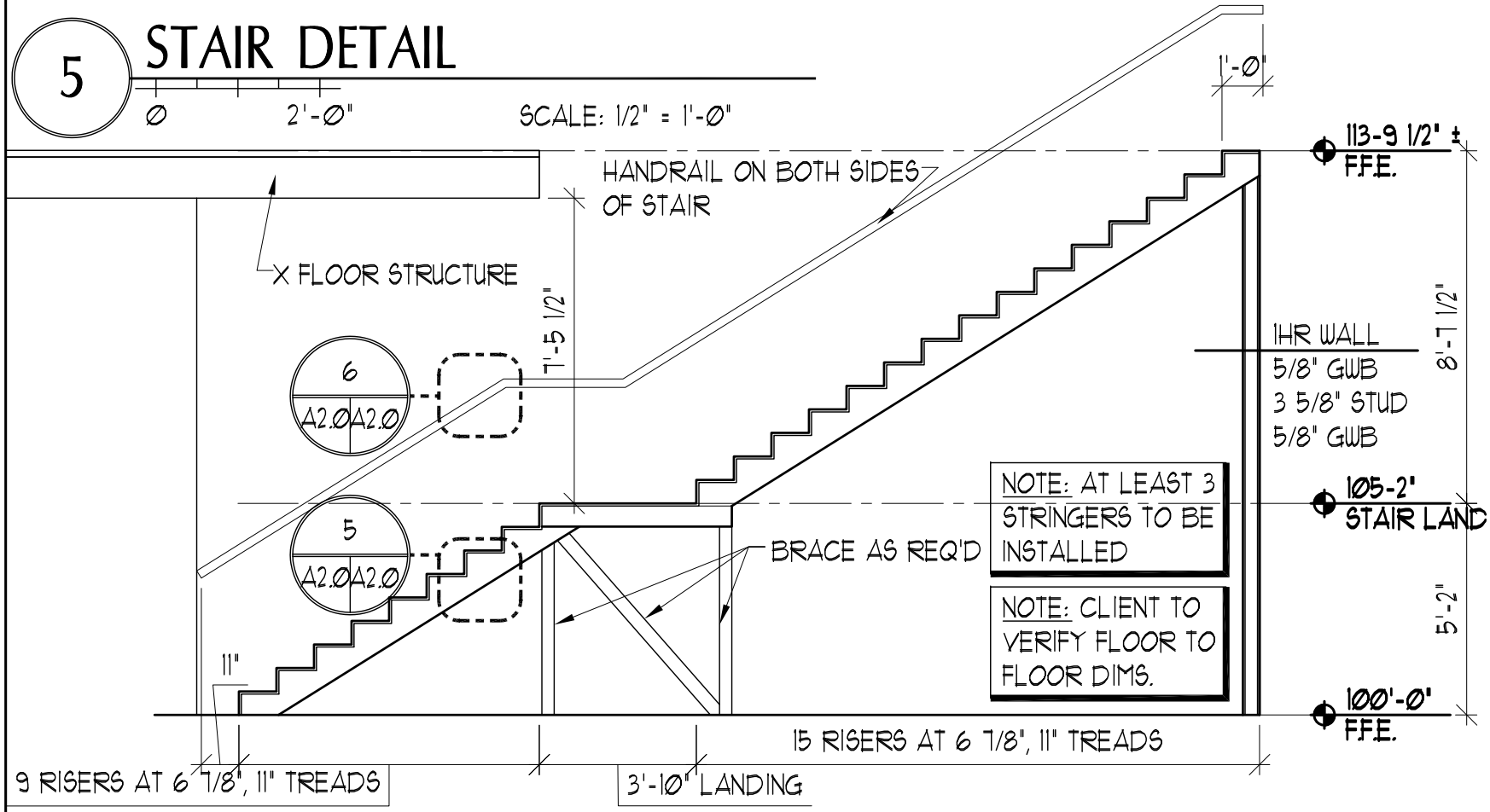
### 6 TYP. HANDRAIL DETAIL

SCALE: 1/2" = 1'-0"



### 5 STAIR DETAIL

SCALE: 1/2" = 1'-0"

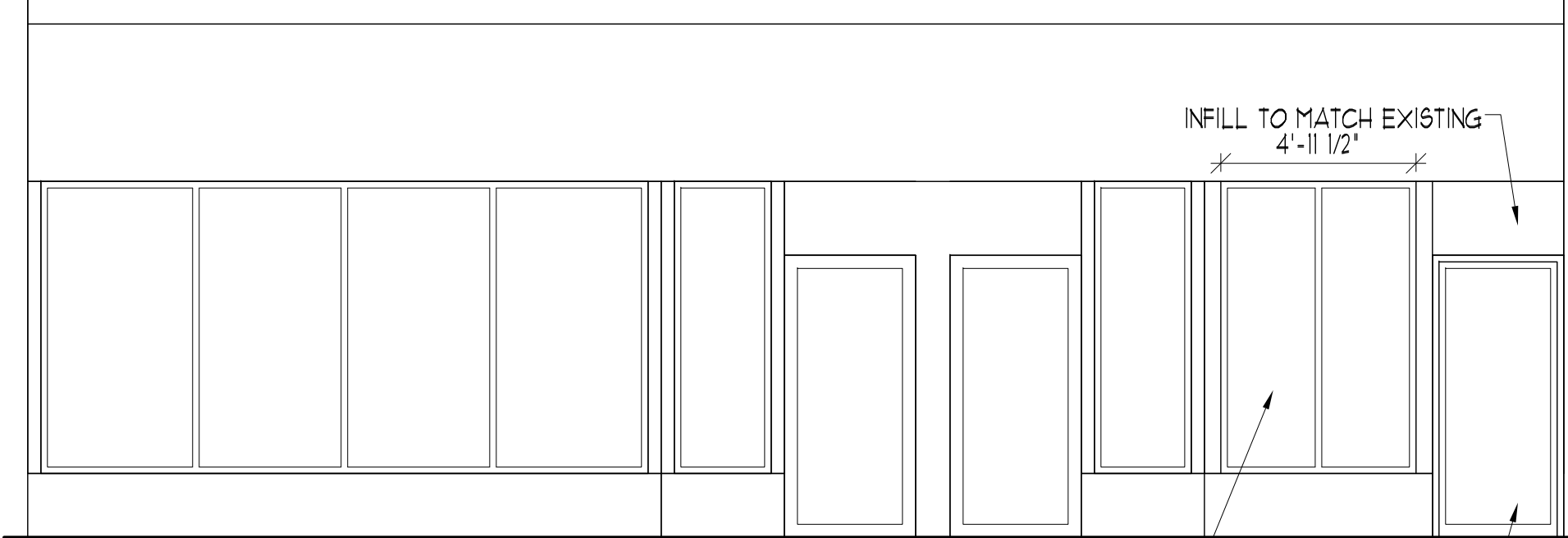


NOTE: AT LEAST 3  
STRINGERS TO BE  
INSTALLED

NOTE: CLIENT TO  
VERIFY FLOOR TO  
FLOOR DIMS.

### 4 STAIR SECTION AND DETAIL

SCALE: 1/4" = 1'-0"

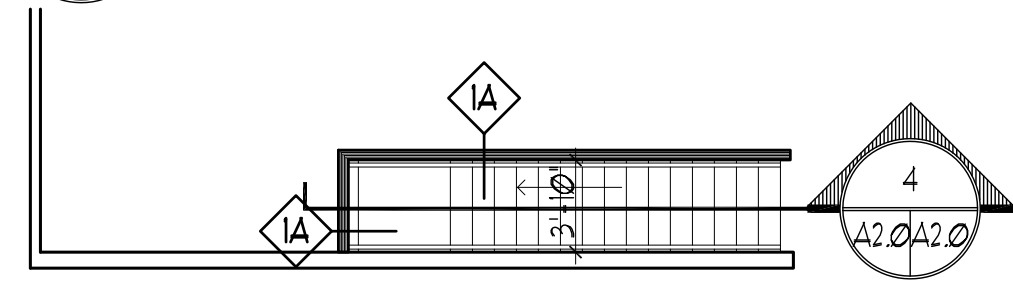


4'-11 1/2" X 7'-0" WINDOW,  
TO MATCH EXISTING

3'-0" X 7'-0" DOOR, TO  
MATCH EXISTING

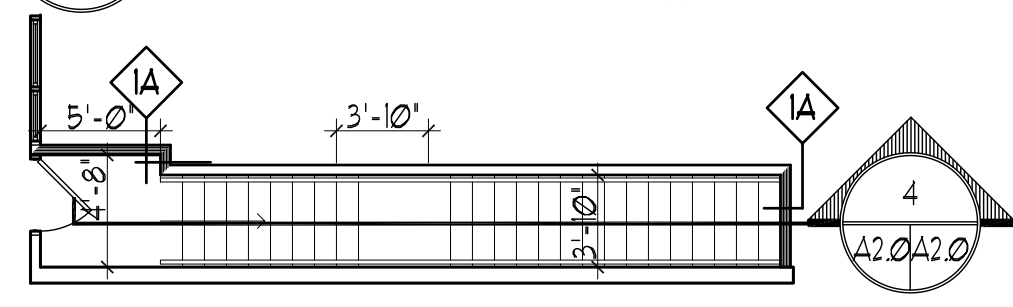
### 3 EXTERIOR ELEVATION

SCALE: 1/4" = 1'-0"



### 2 2ND FLOOR STAIR PLAN

SCALE: 1/8" = 1'-0"



### 1 1ST FLOOR STAIR PLAN

SCALE: 1/8" = 1'-0"

671-675 Forest Ave.  
Apartments

Portland, Maine

REVISIONS		
#	DATE	DESCRIPTION
1	5.13.14	STAIR REV

Date Issued: APRIL 25, 2014

Project Number: 13118

Drawing Scale: SHEET NAME

DET./ELEV

Drawn By: JAP

Checked By: LAS

A2.0