

STREET

23 CODMAN ST.

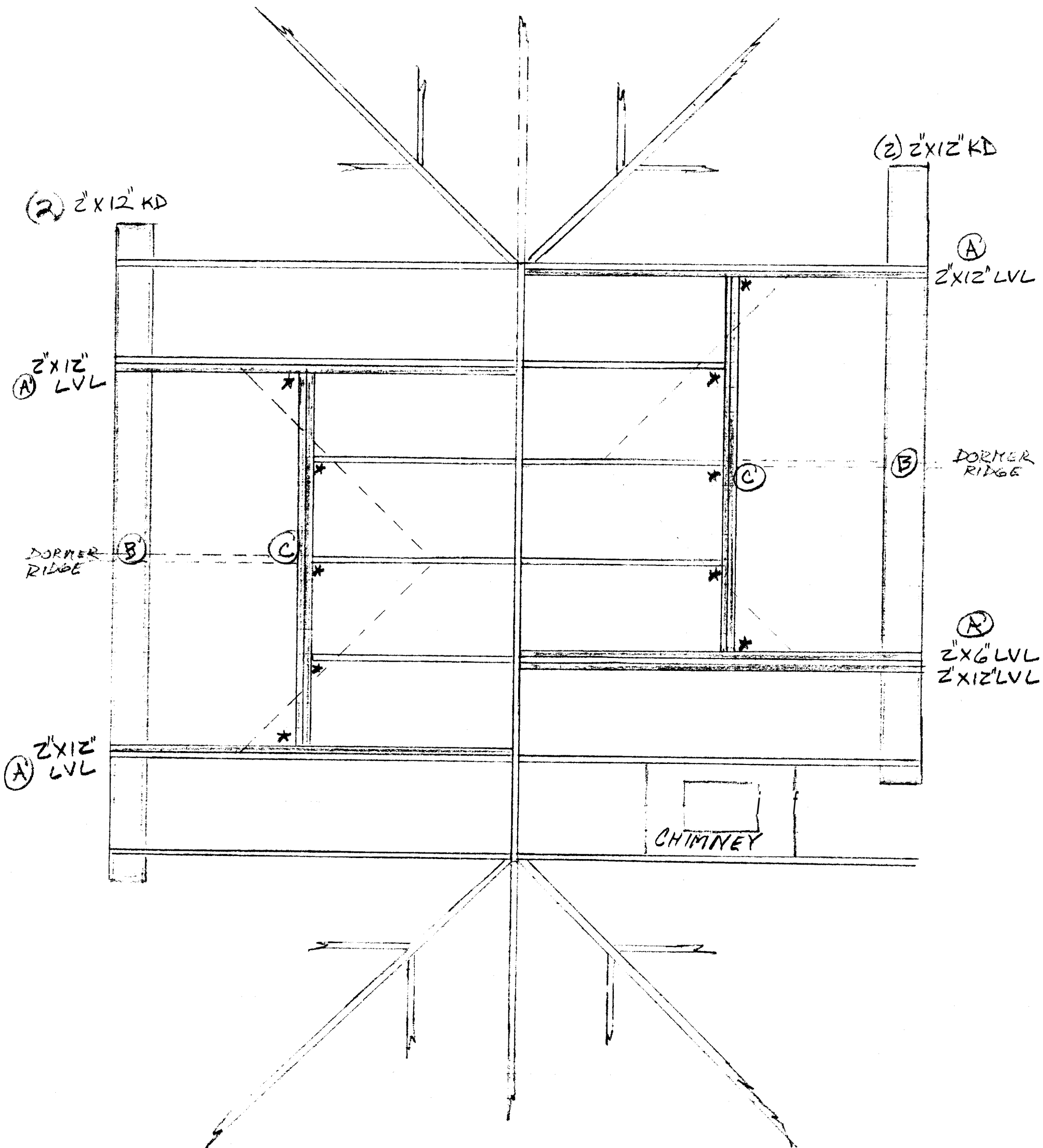
→ RAFTER SUPPORT

==== = EXISTING

==== = ADDED

==== = REPLACED

\* = JOIST HANGER



(A) • 2"x12" LVLS GLUED & SCREWED TO EXISTING RAFTERS

(B) • LVLS BEAR ON DOUBLE 2"x12" KD PLATES

(C) • DOUBLE 2"x8" HEADERS REPLACE EXISTING SINGLE 2"x6" HEADERS