

Project Name:

23 Ocean Ave Portland, Maine

Owner:
Steven & Roberta Cope
172 Concord Street
Portland, Maine 04103

Consultants:
Architect
Kevin Moquin, Architect
Hammond Street
Portland, Maine 04104
207.615.6421



Landscape Architects
Carroll Associates
217 Commercial St.
Portland, ME 04101
207.772.1552



Civil Engineer
Ransom Consulting
400 Commercial St.
Portland, ME 04101
207.772.2891



Drawing Set:

No.	Date	Revision
1	12-14-16	FOR PERMIT

Drawing Set:

PERMITTING

Drawn:

PAB

Checked:

MAP

Approved:

PC



Drawing Title:

DETAILS

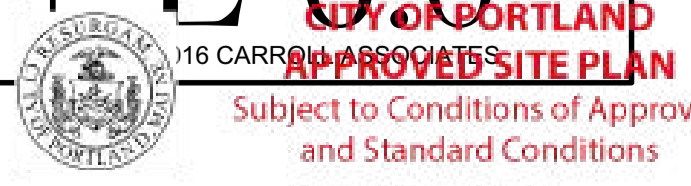
Job Number:

File:

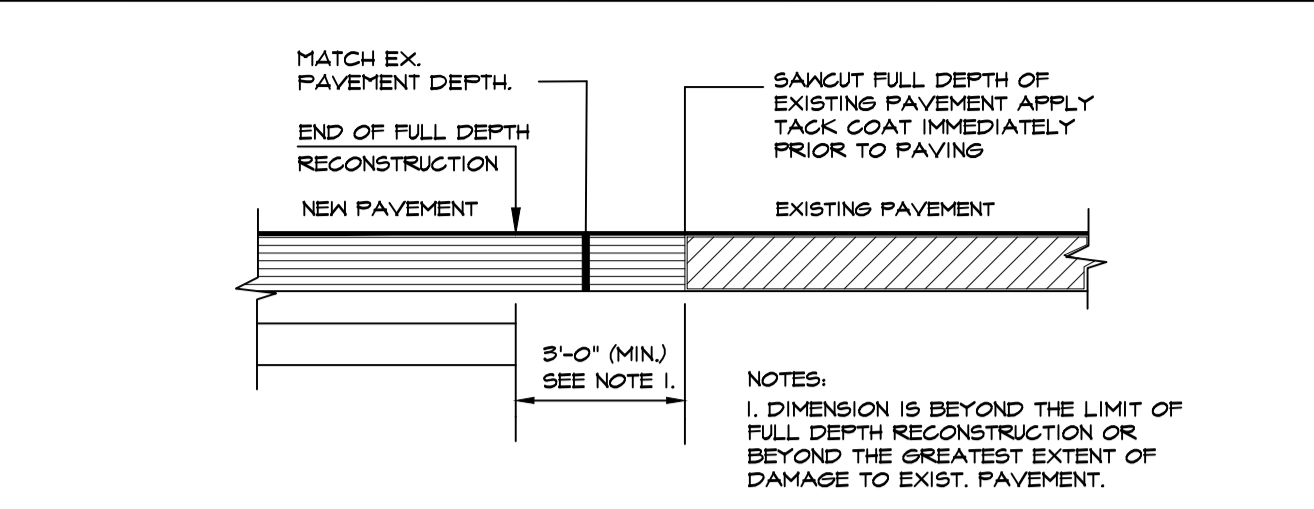
Date: 09-02-2016 Scale: AS SHOWN

Drawing Number:

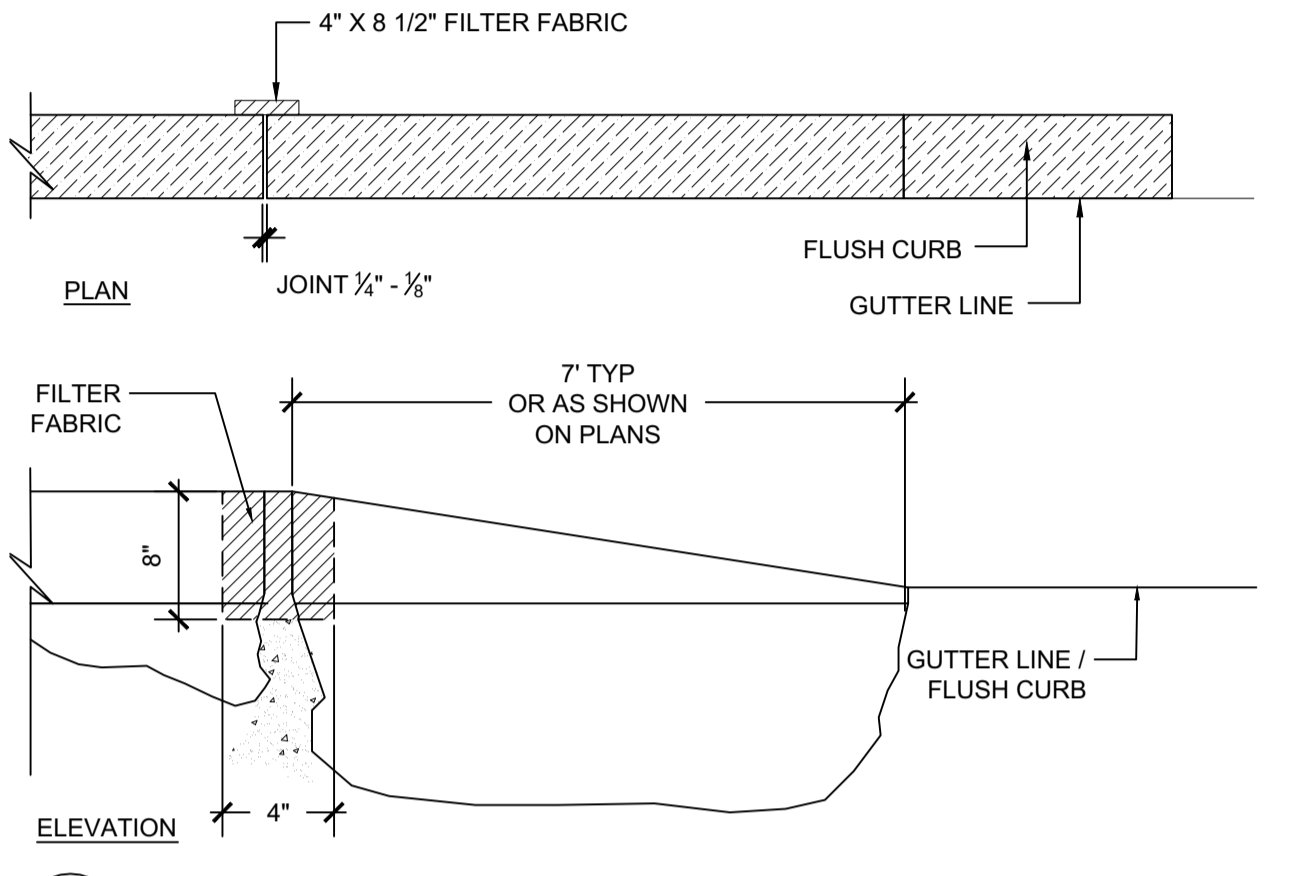
L-60



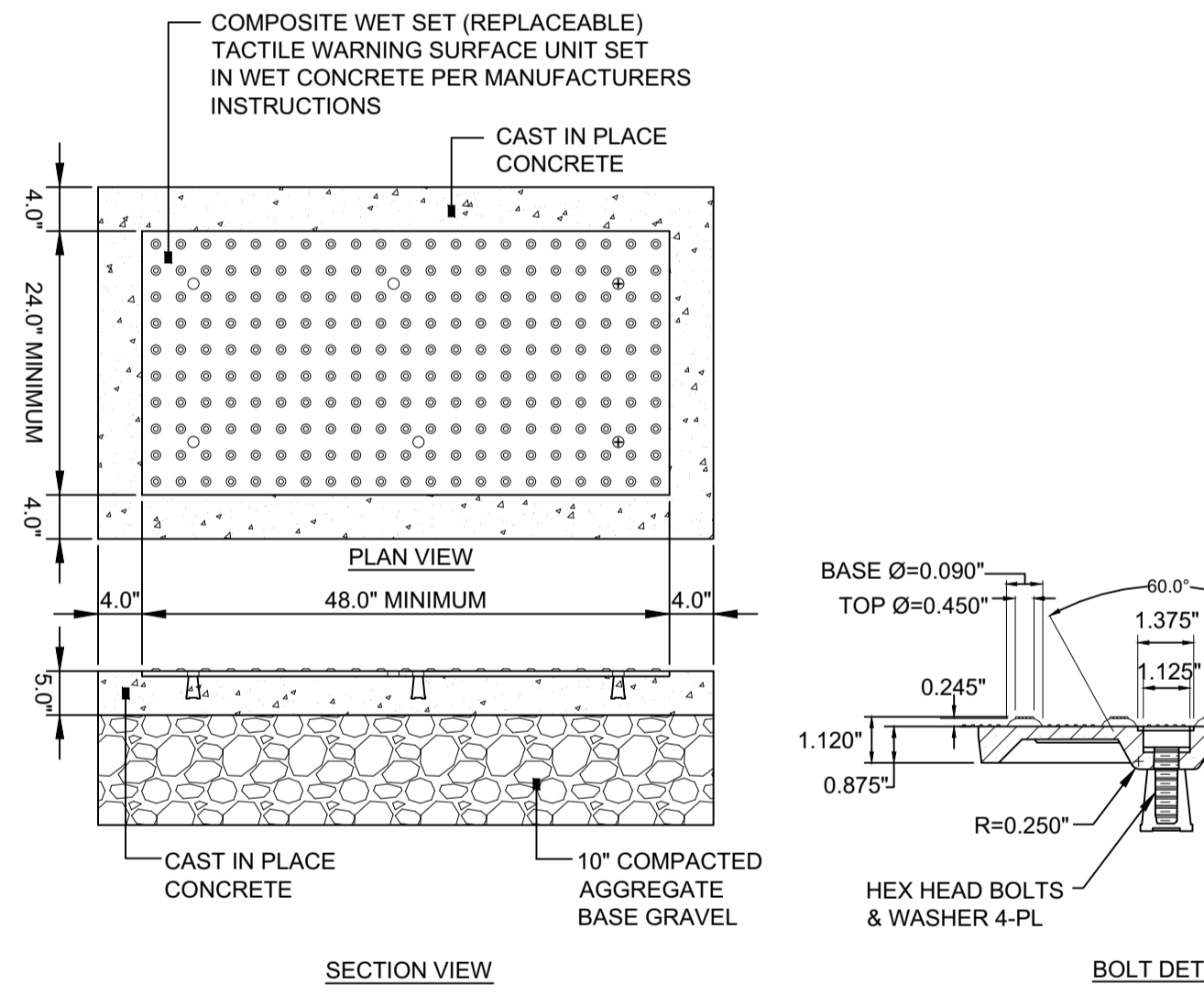
DATE OF APPROVAL 10/25/16
PLANNER Nell Donaldson
PROJECT NO. 2016-150



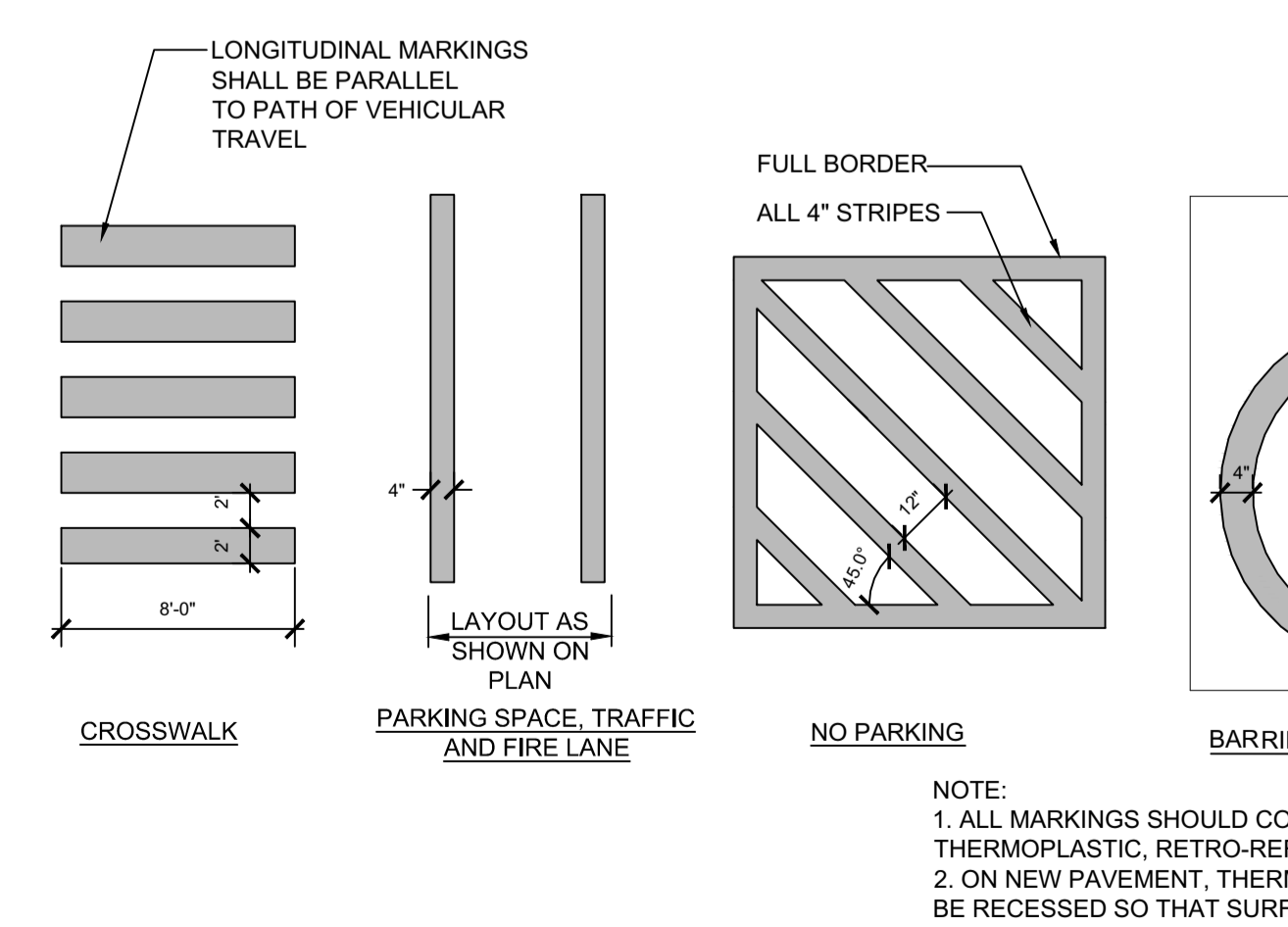
1 PAVEMENT CUTTING/MATCHING
NOT TO SCALE



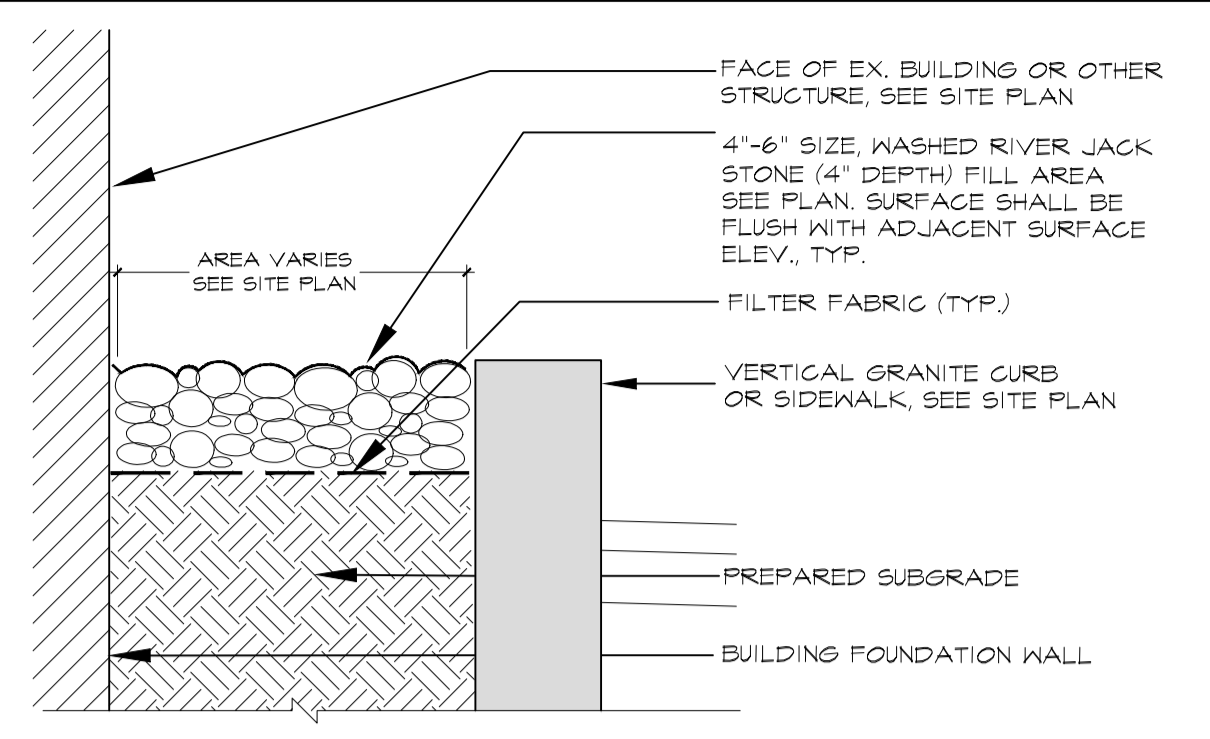
2 TIP DOWN CURB
NOT TO SCALE



3 SIDEWALK RAMP DETECTABLE WARNING TILE AND APEX RAMP
NOT TO SCALE



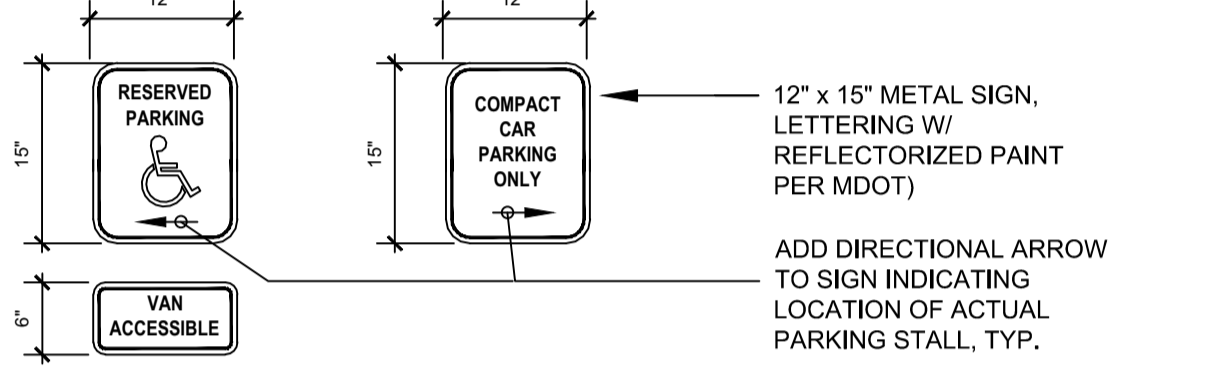
4 PAINT STRIPING
NOT TO SCALE



5 RIVER ROCK SURFACE
NOT TO SCALE

NOTES:

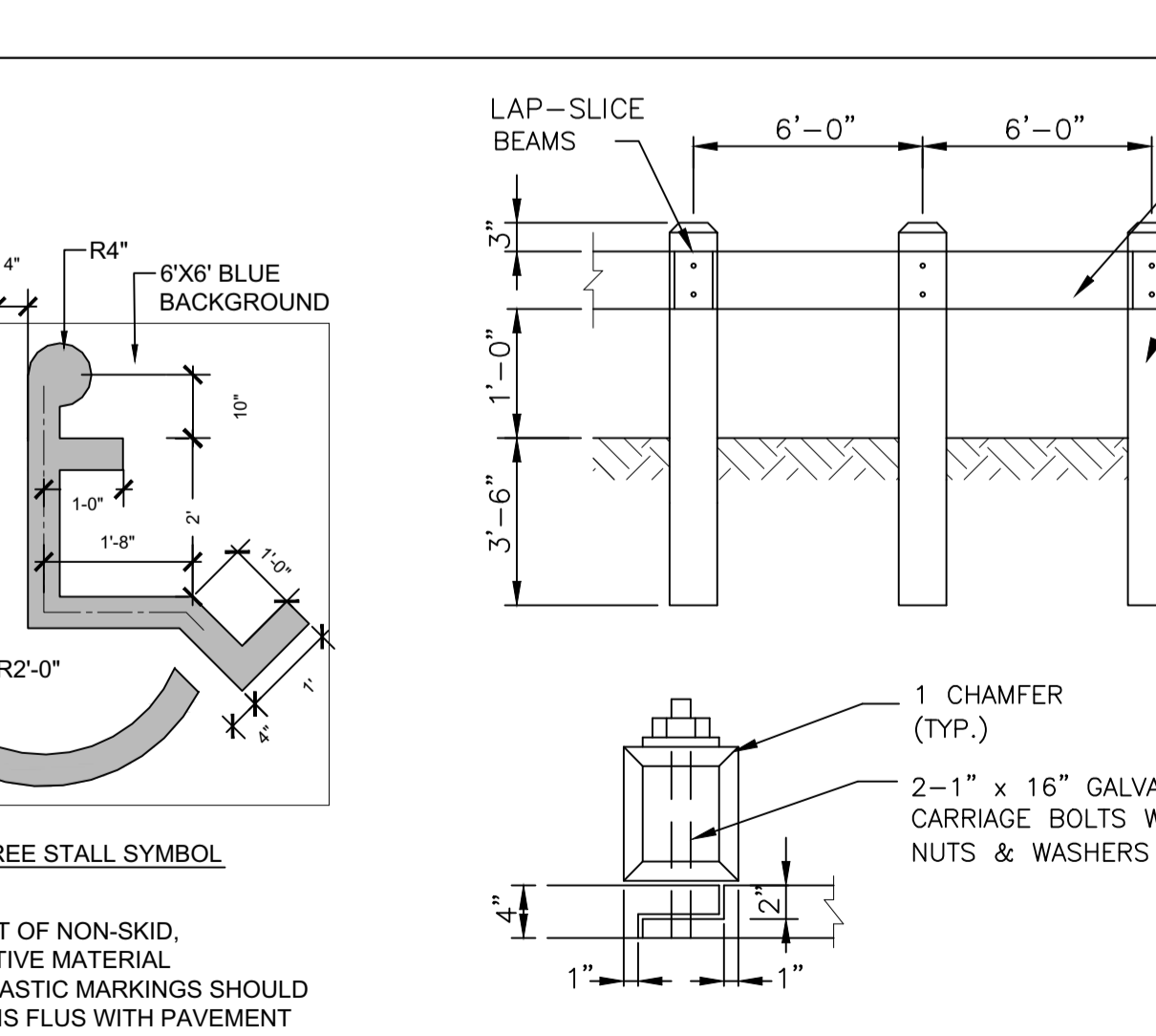
- SIGNS SHALL BE FABRICATED & INSTALLED IN ACCORDANCE WITH MAINE DEPARTMENT OF TRANSPORTATION STANDARD SPECIFICATIONS, HIGHWAYS AND BRIDGES REVISION OF DECEMBER 2002, SECTION 645.
- ALL PERMANENT SIGNS ON THIS PROJECT ARE CLASSIFIED UNDER SECTION 645.03(b) TYPE 1 REGULATORY WARNING AND ROUTE MARKER ASSEMBLY SIGNS.
- ALL SIGNS SHALL BE SURFACE MOUNTED TO BUILDING OR COLUMN AT A HEIGHT OF 7'-0" TO BOTTOM OF SIGN, TYP.



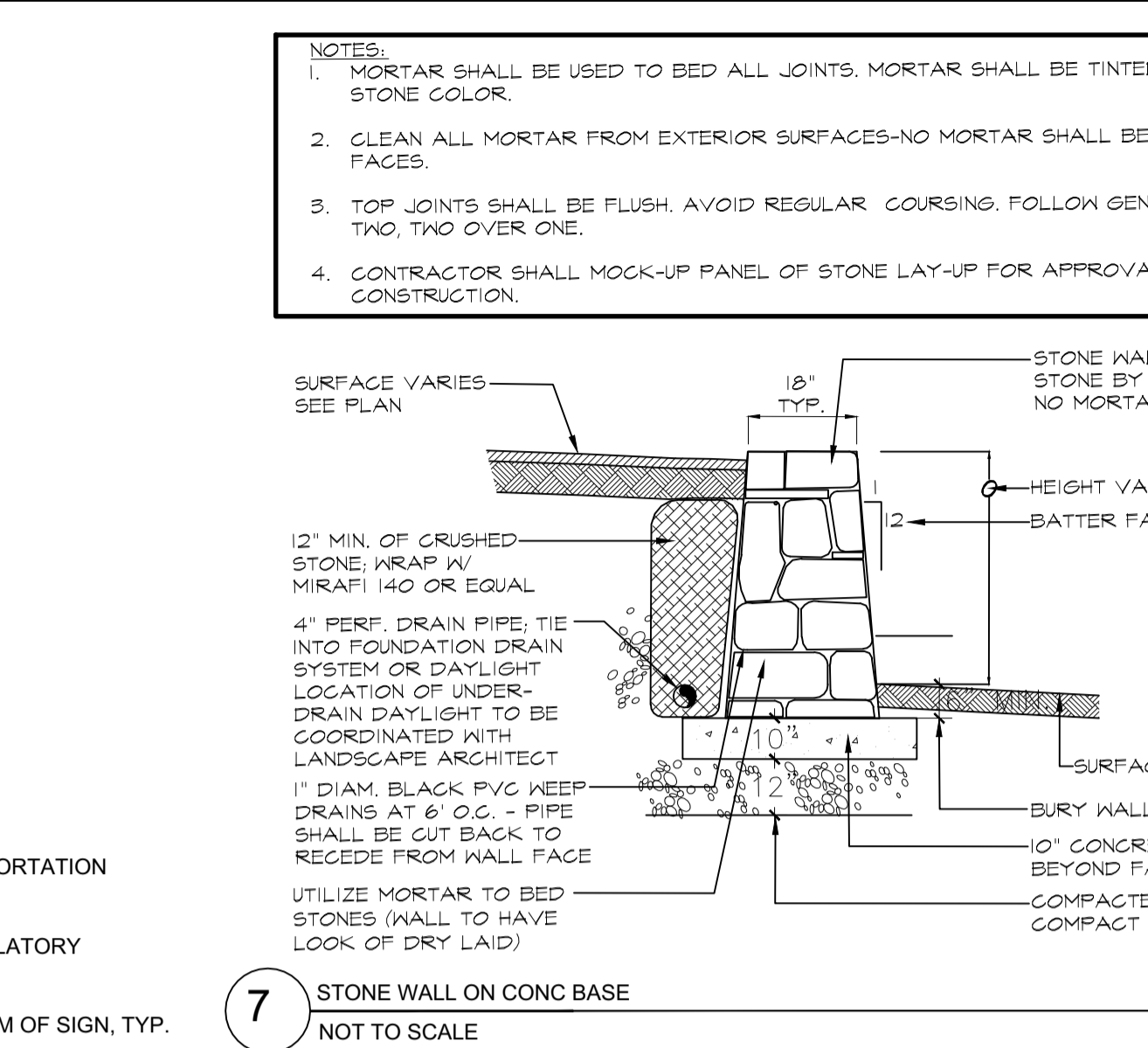
6 SITE SIGNAGE
NOT TO SCALE

NOTES:

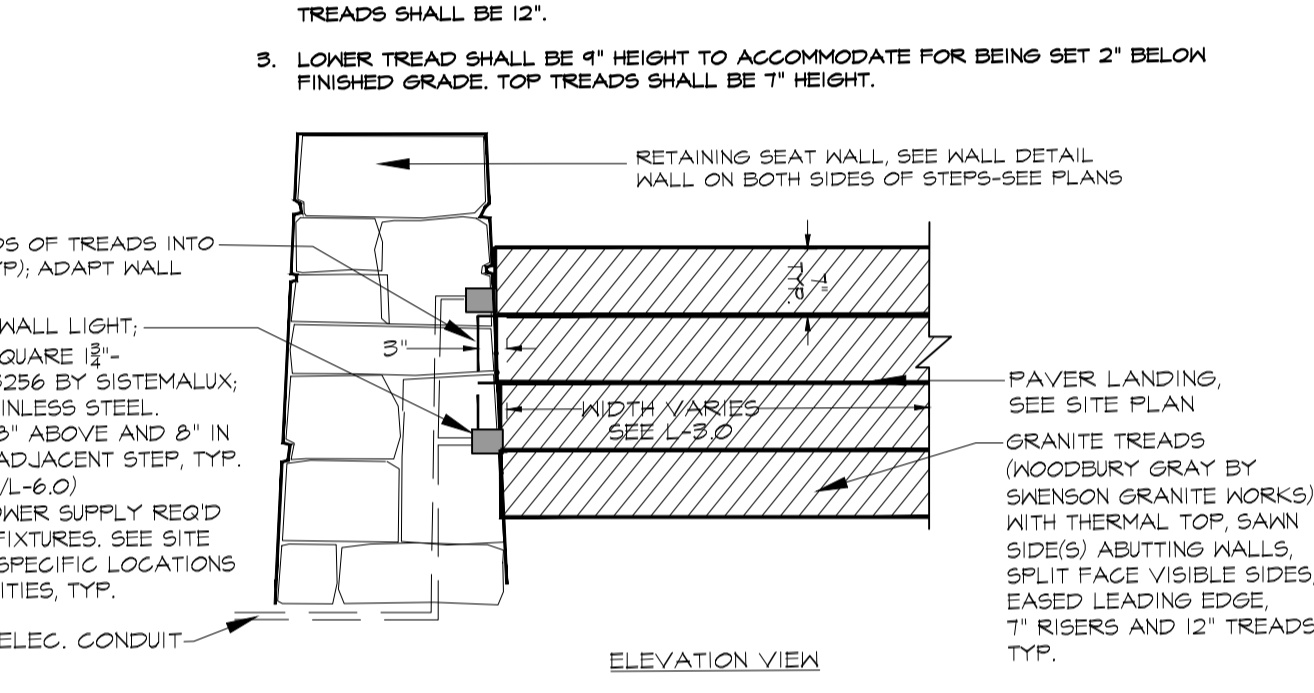
- COMPOSITE WET SET (REPLACEABLE) TACTILE WARNING SURFACE UNITS SHALL BE AS MANUFACTURED BY ADA SOLUTIONS, INC. (WWW.ADATILE.COM), OR APPROVED EQUAL.
- CAST IN PLACE CONCRETE SHALL MEET SPECIFICATIONS FOR MDOT CLASS A STRUCTURAL CONCRETE, MINIMUM COMPRESSIVE STRENGTH 4,000 PSI. THE CONCRETE SHALL BE SEALED PRIOR TO SETTING PANELS. THE EXPOSED CONCRETE BORDER SHALL RECEIVE A GROOVED EDGE BETWEEN THE TILE AND CONCRETE, ALONG WITH A UNIFORM BROOM FINISH PERPENDICULAR TO THE FLOW OF PEDESTRIAN TRAFFIC.
- TRUNCATED DOMES SHALL BE ALIGNED IN ROWS, PARALLEL AND PERPENDICULAR TO THE PREDOMINANT DIRECTION OF TRAVEL. TRUNCATED DOME BRICKS AND GRANITE PAVERS ARE NOT ALLOWED.
- FOR ALL SIDEWALK RAMP MADE OF CONCRETE OR ASPHALT, FEDERAL YELLOW COLORED (#33538) TILES SHALL BE USED. FOLLOW MANUFACTURER'S INSTRUCTIONS FOR INSTALLATION.
- FOR ALL SIDEWALK RAMP MADE OF BRICK, SEATTLE YELLOW (#23594) COATED COLORED TILES SHALL BE USED.
- SIZE: THE DETECTABLE WARNING PANEL(S) SHALL EXTEND 24 INCHES MINIMUM IN THE DIRECTION OF TRAVEL AND THE FULL WIDTH OF THE CURB RAMP, LANDING, OR BLENDED TRANSITION TO THE STREET.
- ORIENTATION: THE DETECTABLE WARNING PANEL SHALL BE LOCATED SO THAT THE EDGE NEAREST THE CURB LINE IS 6 INCHES MINIMUM AND 8 INCHES MAXIMUM FROM THE CURB LINE. THE PANEL SHALL BE ORIENTATED TO THE DIRECTION OF TRAVEL AS IDENTIFIED BY THE POINT OF EGRESS.



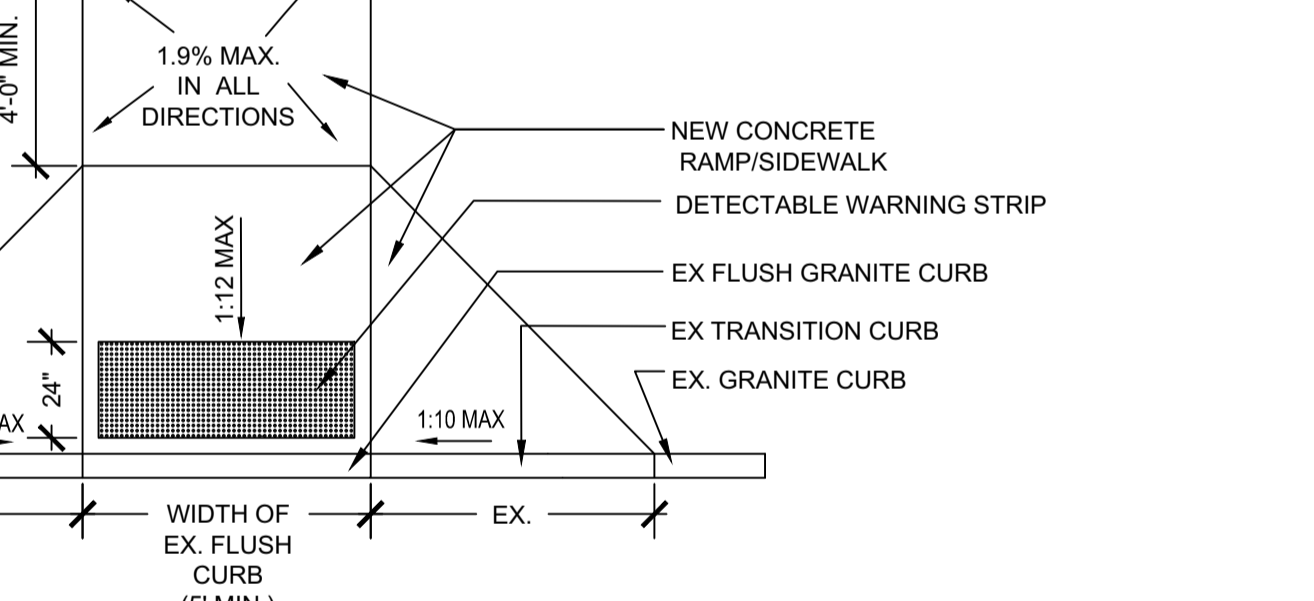
7 STONE WALL ON CONC BASE
NOT TO SCALE



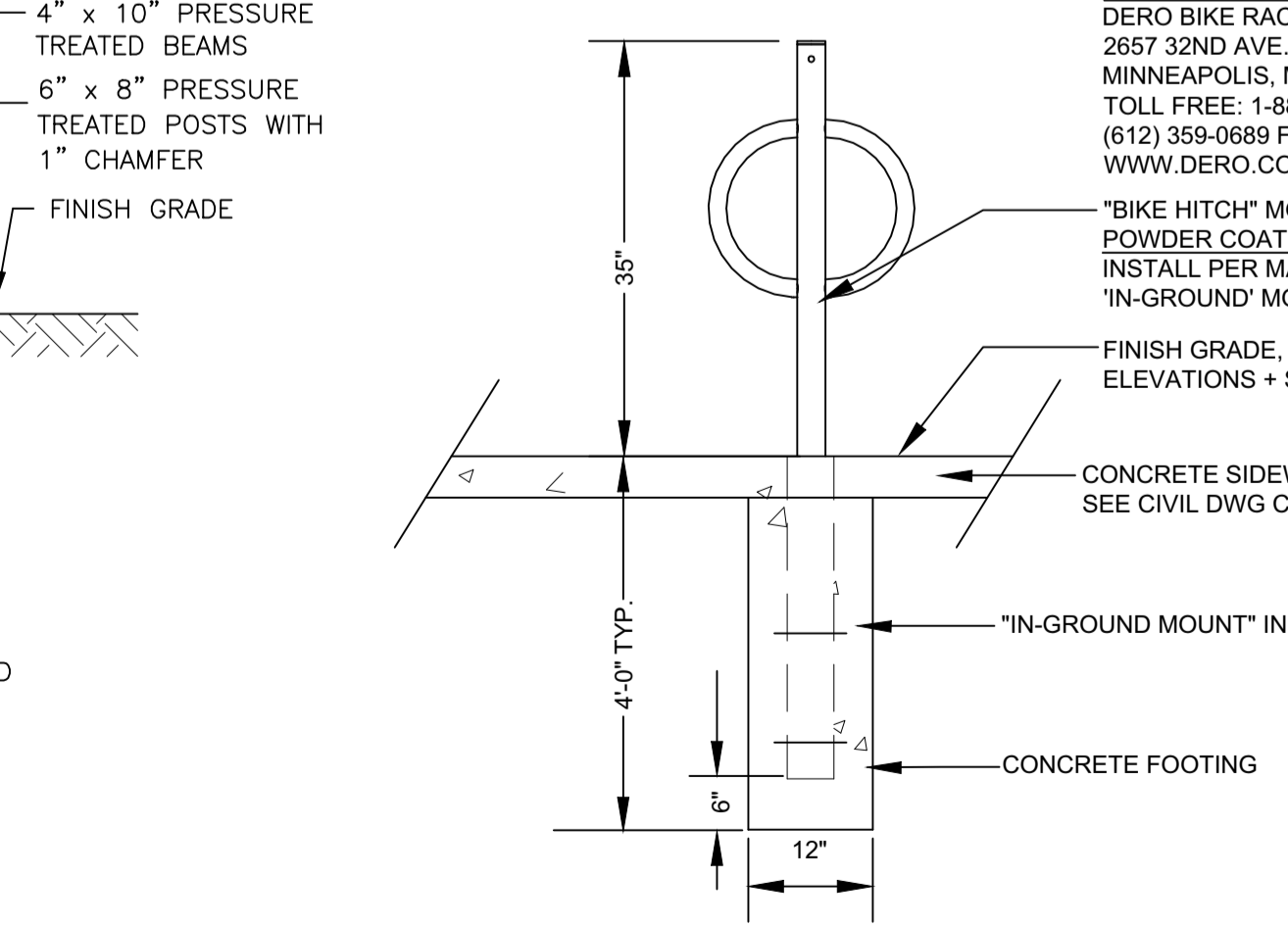
8 STONE STEPS
NOT TO SCALE



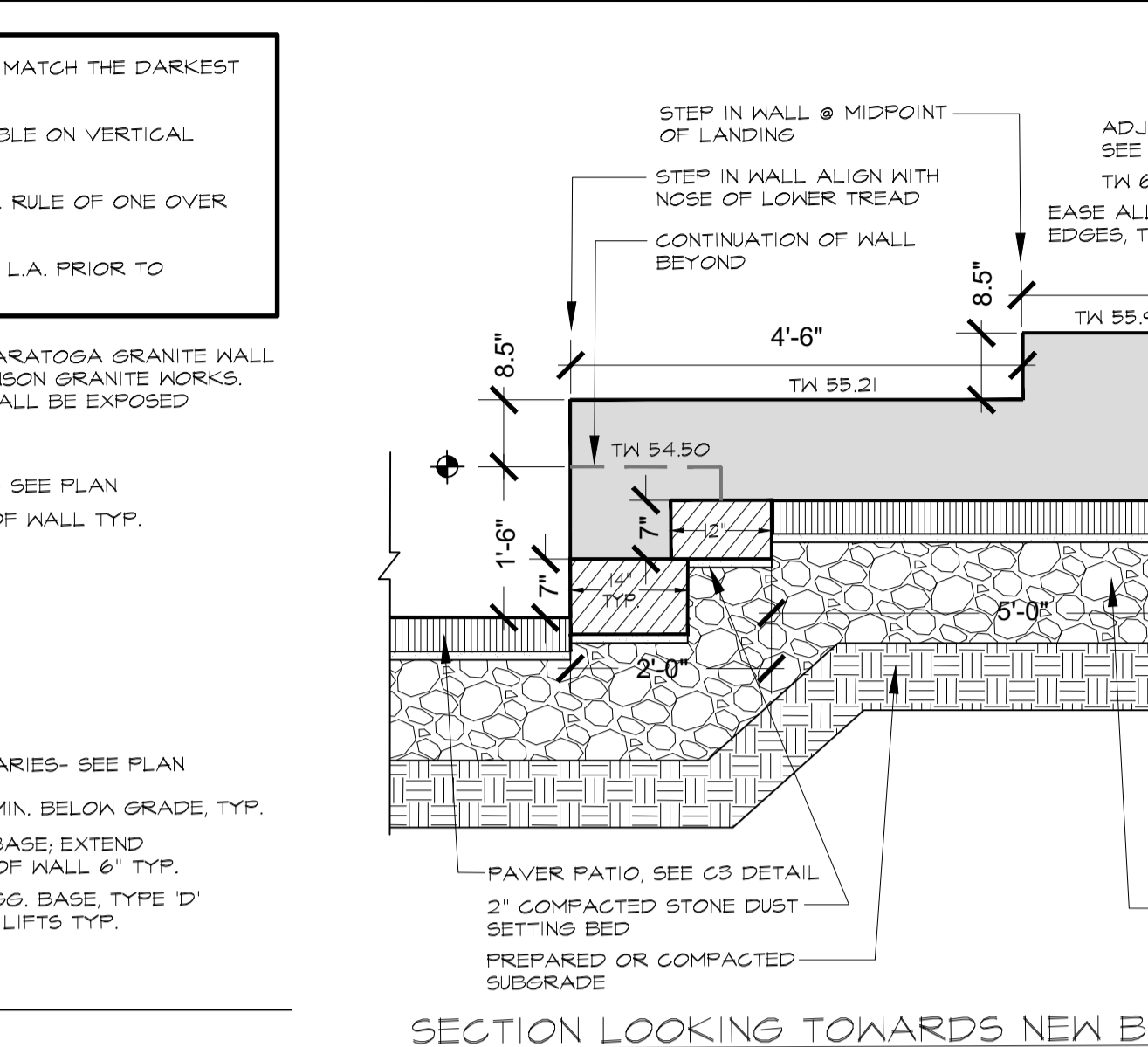
9 WOOD GUARDRAIL
NOT TO SCALE



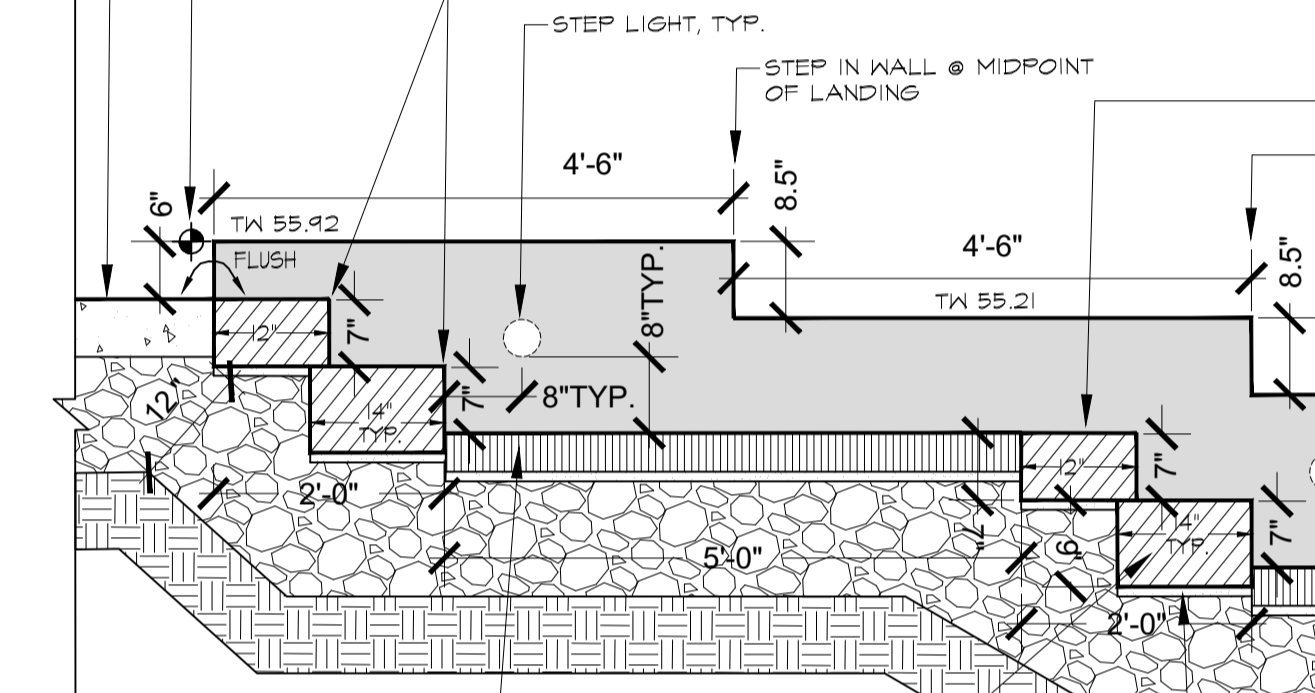
10 BICYCLE RACK AND CONCRETE PAD
NOT TO SCALE



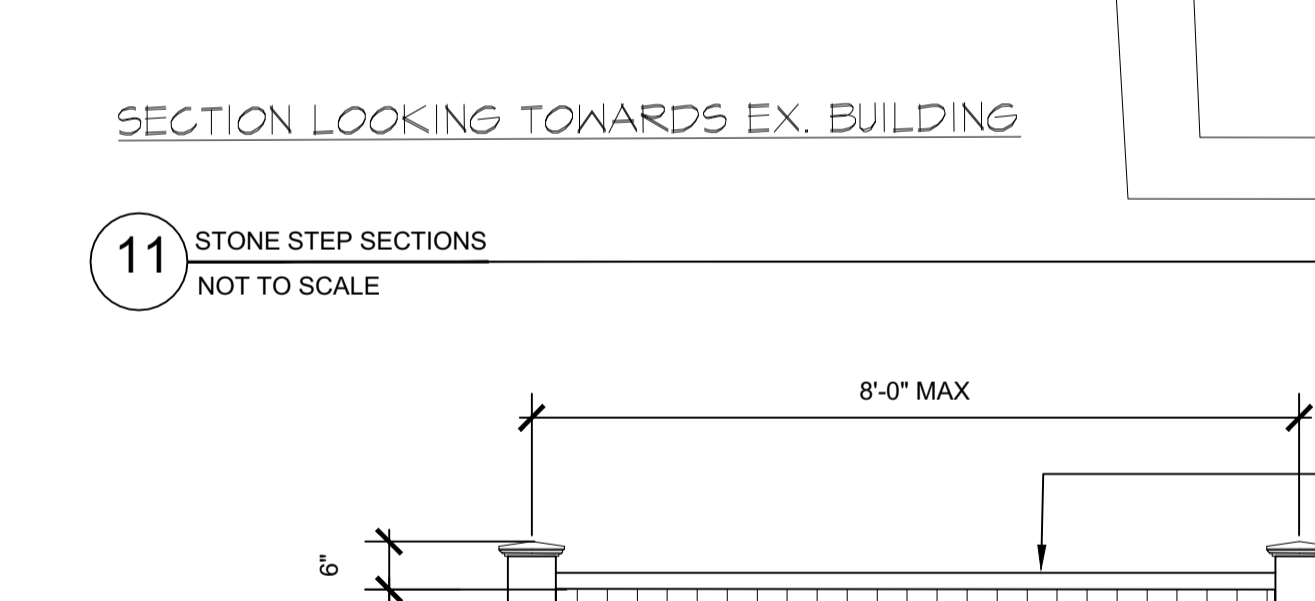
11 STONE STEP SECTIONS
NOT TO SCALE



12 WOOD FENCE DETAIL
NOT TO SCALE



13 SECTION LOOKING TOWARDS NEW BUILDING



14 SECTION LOOKING TOWARDS EX. BUILDING