



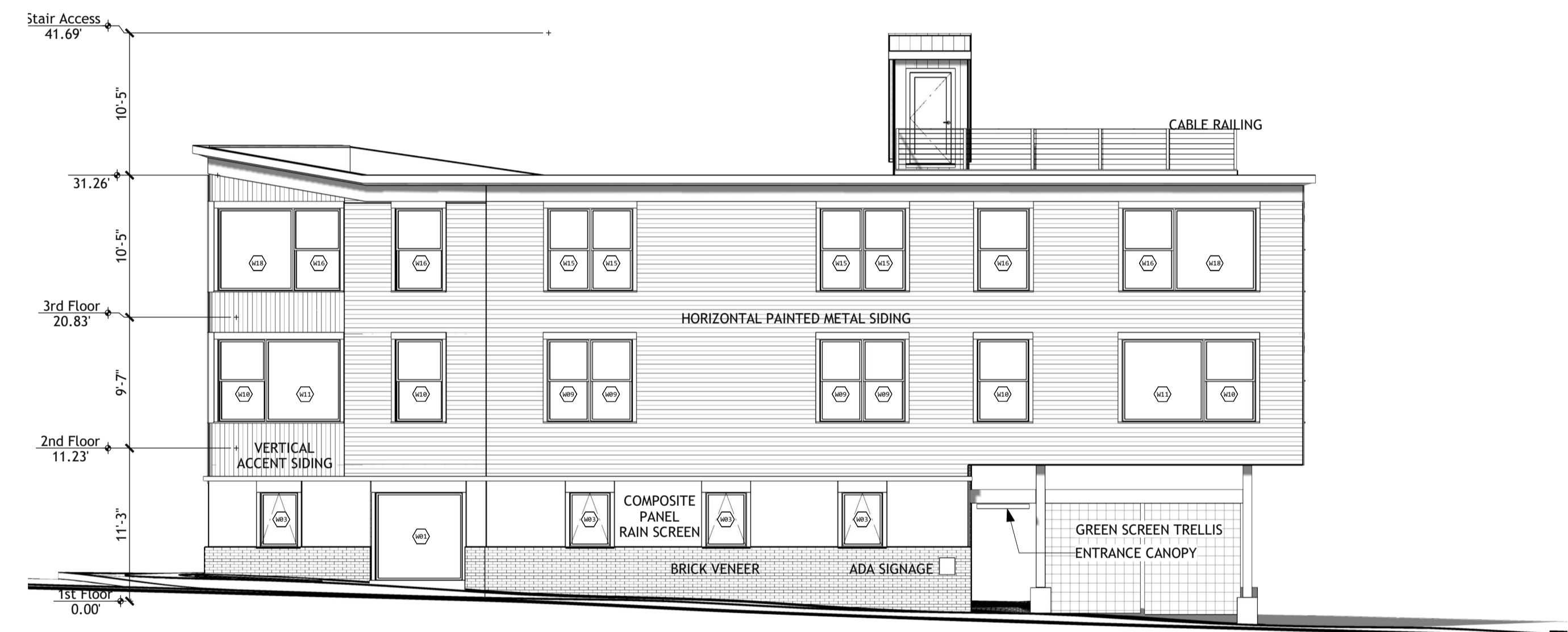
1 : East Elevation : 1/8 in = 1 ft



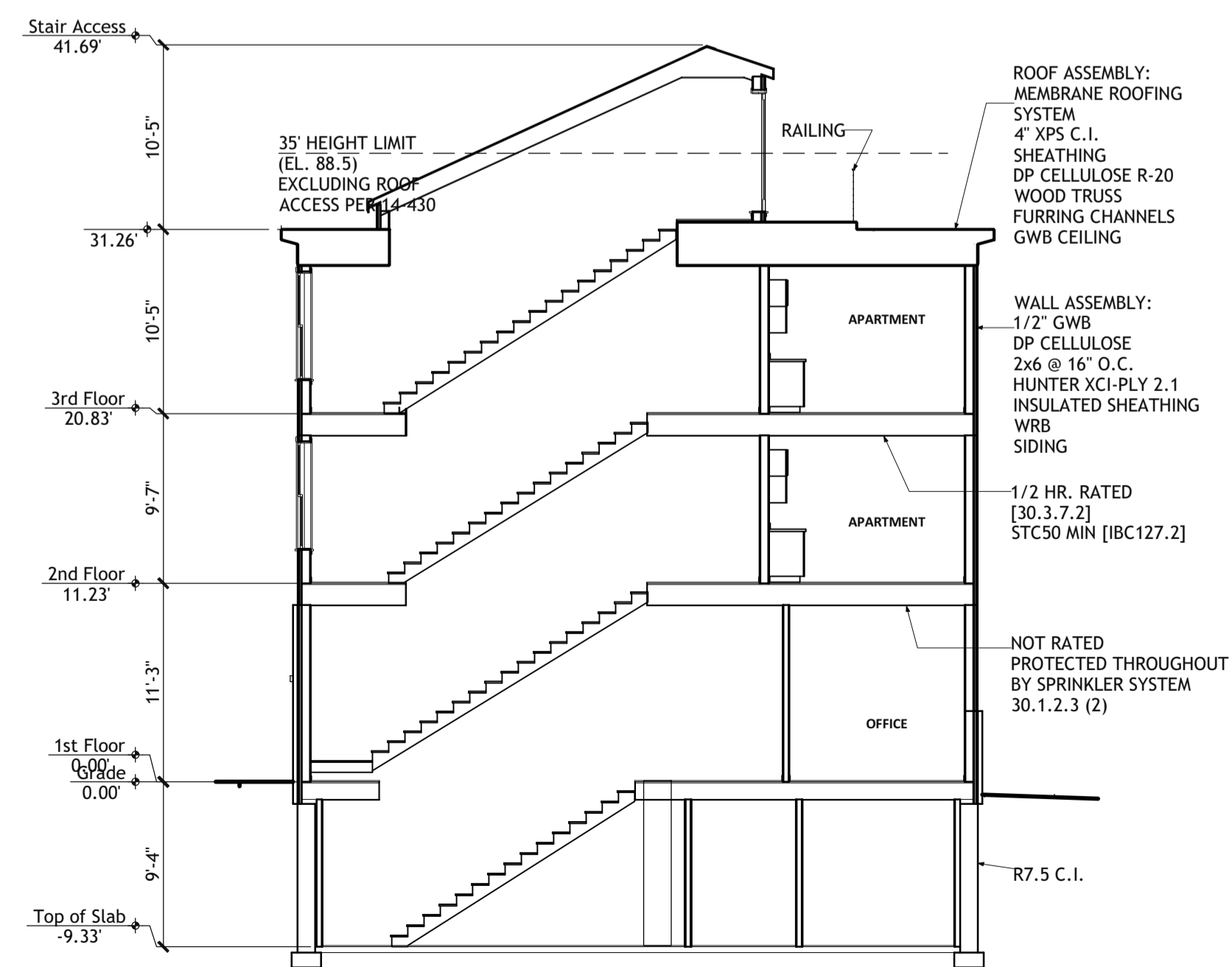
2 : North Elevation : 1/8 in = 1 ft



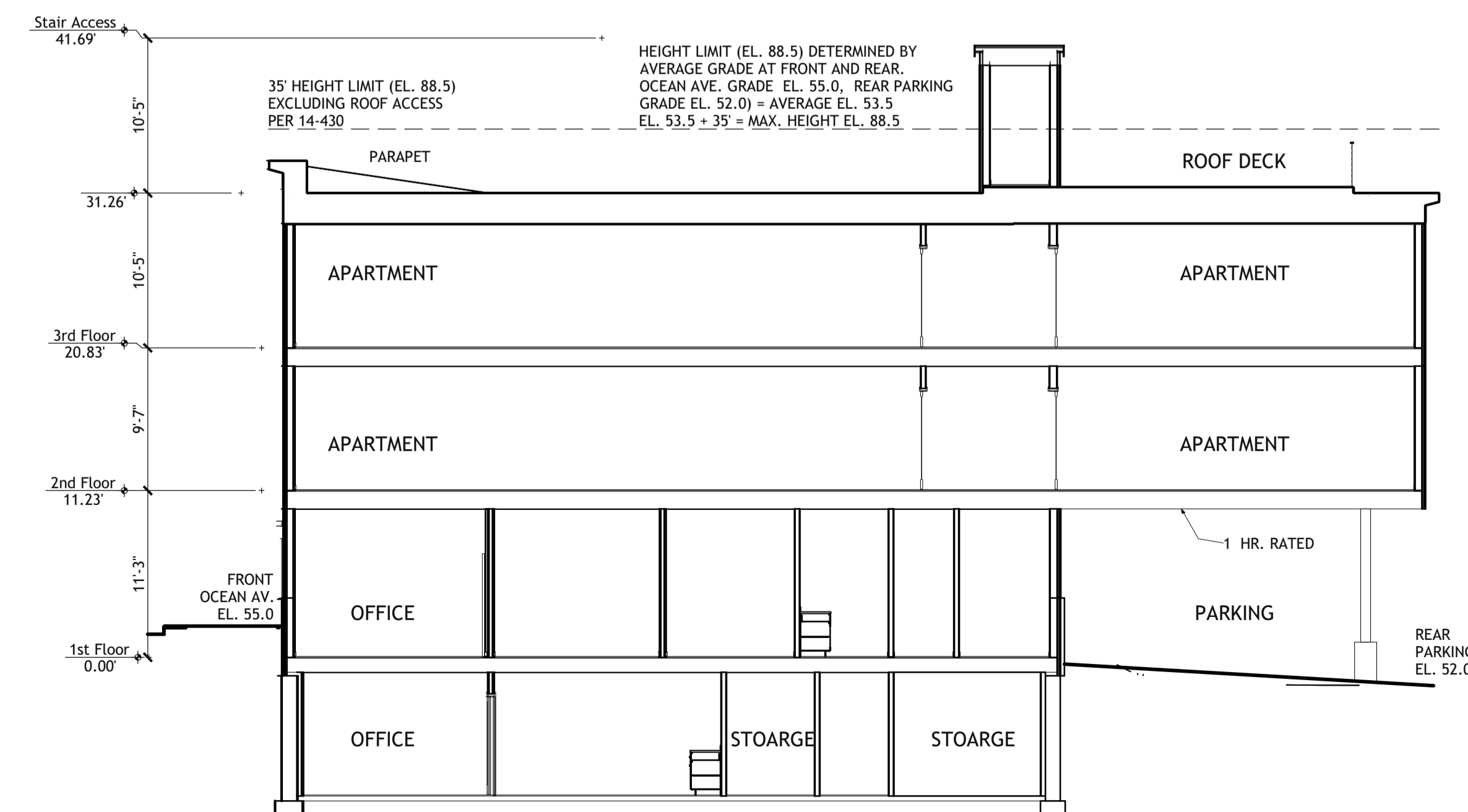
3 : West Elevation : 1/8 in = 1 ft



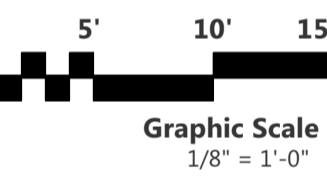
4 : South Elevation : 1/8 in = 1 ft



5 : Section at Stair : 1/8 in = 1 ft



6 : Longitudinal Section : 1/8 in = 1 ft



Kevin Moquin Architect
 Portland, ME
 Info@km-a.me
 (207)-615-6421
 Revisions:

23 Ocean
 Portland, ME

ELEVATIONS
 & SECTIONS

CITY OF PORTLAND
 APPROVED SITE PLAN
 Subject to Conditions of Approval
 and Standard Conditions
 9/6/2016
 DATE OF APPROVAL 10/2/2016
 PLANNER Neil Donaldson
 PROJECT NO. 2016-150