



Helen Donaldson &lt;hcd@portlandmaine.gov&gt;

---

**draft subdivision plat review**

---

**William Clark** <wbc@portlandmaine.gov>  
To: Helen Donaldson <hcd@portlandmaine.gov>

Mon, Jul 11, 2016 at 10:36 AM

Hi Nell,

A nice clean subdivision plan.

Several items as shown on the attached survey review.

1. The sidewalk at corner of Ocean Ave and Hersey St shows as being constructed on the private property. Currently the sidewalk is within the City street ROW limits for Ocean Ave and Hersey St. If it is expanded onto the private property the City will need a public easement for that area and a detail on the plan showing bearings, distances, and curve data for the easement metes and bounds description.
2. The proposed aerial licences in Ocean Ave and Hersey St will need bearings, distances, and curve data added to the plan for the license metes and bounds descriptions. The vertical clearance in the license areas will also need to be stated.

Thanks,

Bill

[Quoted text hidden]

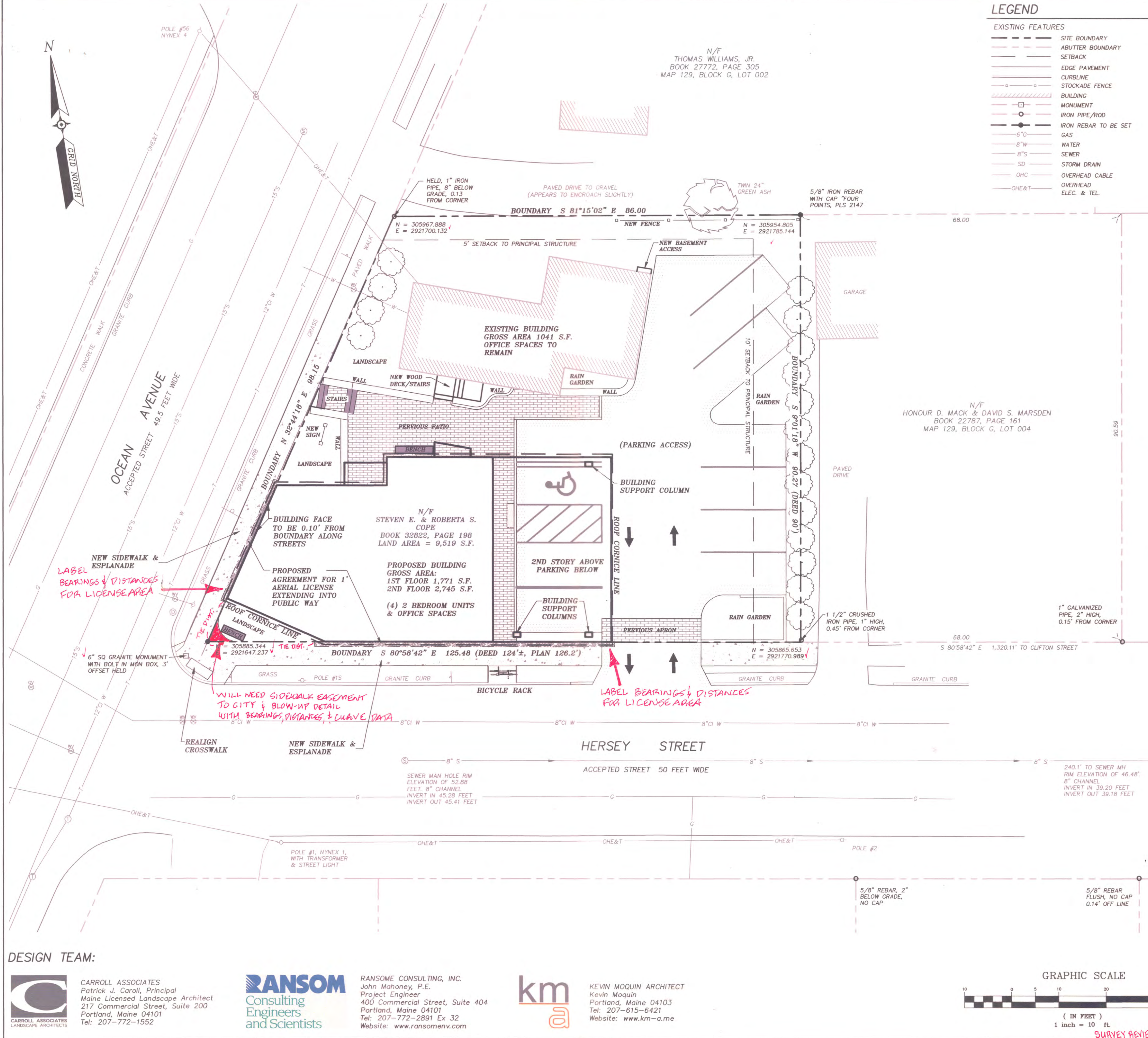
--

William Clark, PLS  
Senior Project Engineer  
DPW Engineering  
City of Portland  
55 Portland St.  
Portland, ME 04101  
[207 874 8847](tel:2078748847)



**Ocean Ave No 23 Site Subdivision Plat 6 07 2016 Survey Review 7 11 2016.PDF**

859K



**STATE OF MAINE**  
CUMBERLAND COUNTY SS REGISTRY OF DEEDS  
RECEIVED \_\_\_\_\_ 2016  
AT \_\_\_\_\_ M. AND RECORDED IN  
PLAN BOOK \_\_\_\_\_ PAGE \_\_\_\_\_  
REGISTER

**REVISIONS TO BUILDING FOOTPRINT, COLUMNS AND OTHER IMPROVEMENTS PER DESIGN TEAM RECEIVED 06/06/16**

REV.	DATE	STATUS	DESCRIPTION
B	06/07/2016	REVISED	REVISIONS TO BUILDING FOOTPRINT, COLUMNS AND OTHER IMPROVEMENTS PER DESIGN TEAM RECEIVED 06/06/16
A	06/04/2016	ADD	PROPOSED BUILDING/PARKING/WALKS, PRELIMINARY SUBMISSION

PROJ. NO: 15069  
DWG NAME: 23 OCEAN SCALE: 1" = 10'

**APPROVED BY CITY OF PORTLAND PLANNING BOARD**

DATE \_\_\_\_\_  
CHAIRPERSON \_\_\_\_\_

**DESIGN TEAM:**

**CARROLL ASSOCIATES**  
Patrick J. Carroll, Principal  
Maine Licensed Landscape Architect  
217 Commercial Street, Suite 200  
Portland, Maine 04101  
Tel: 207-772-1552

**RANSOM Consulting Engineers and Scientists**  
RANSOME CONSULTING, INC.  
John Mahoney, P.E.  
Project Engineer  
400 Commercial Street, Suite 404  
Portland, Maine 04101  
Tel: 207-615-6421  
Website: www.ransomenv.com

**km Kevin Moquin ARCHITECT**  
Kevin Moquin  
Portland, Maine 04103  
Tel: 207-772-2891 Ex 32  
Website: www.km-a.me

**Four Points Associates, Inc.**  
Donald E. Dostie PLS, Principal  
P.O. Box 1398  
Portland, Maine 04104  
9 Ralph Avenue, Lewiston, ME 04240  
Tel: 207-577-5840

**FOR RECORD OWNERS:**  
**STEVEN E. AND ROBERTA S. COPE**  
PORTLAND, MAINE 04104

**LOCATION MAP**  
SCALE: 1" = 200'

PLAN DATE: 06/04/2016

**DESIGN TEAM:**

**CARROLL ASSOCIATES**  
LANDSCAPE ARCHITECTS

**RANSOM**  
Consulting  
Engineers  
and Scientists

**RANSOME CONSULTING, INC.**  
John Mahoney, P.E.  
Project Engineer  
400 Commercial Street, Suite 404  
Portland, Maine 04101  
Tel: 207-615-6421  
Website: www.ransomenv.com

**km**  
Kevin Moquin ARCHITECT  
Kevin Moquin  
Portland, Maine 04103  
Tel: 207-772-2891 Ex 32  
Website: www.km-a.me

