

Project Name:

23 Ocean Ave Portland, Maine

Owner:
Steven & Roberta Cope
172 Concord Street
Portland, Maine 04103

Consultants:

Architect
Kevin Moquin, Architect
Hammond Street
Portland, Maine 04104
207.615-6421



Landscape Architects
Carroll Associates
217 Commercial St.
Portland, ME 04101
207.772.1552



Civil Engineer
Ransom Consulting
400 Commercial St.
Portland, ME 04101
207.772.2891



Drawing Set:

No.	Date	Revision

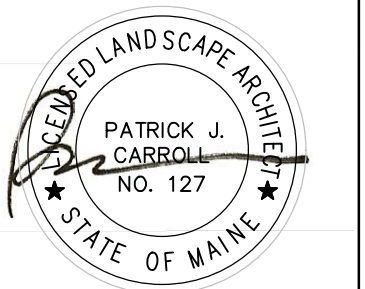
Drawing Set:

FOR PERMITTING

Drawn:
PAB

Checked:
PC

Approved:



Drawing Title:

DETAILS

Job Number:

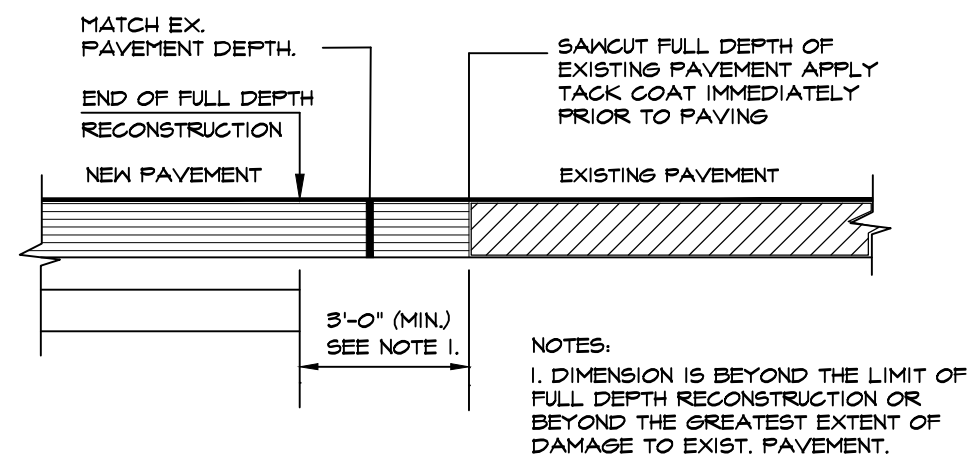
File:

Date: 6-6-16 Scale: As Shown

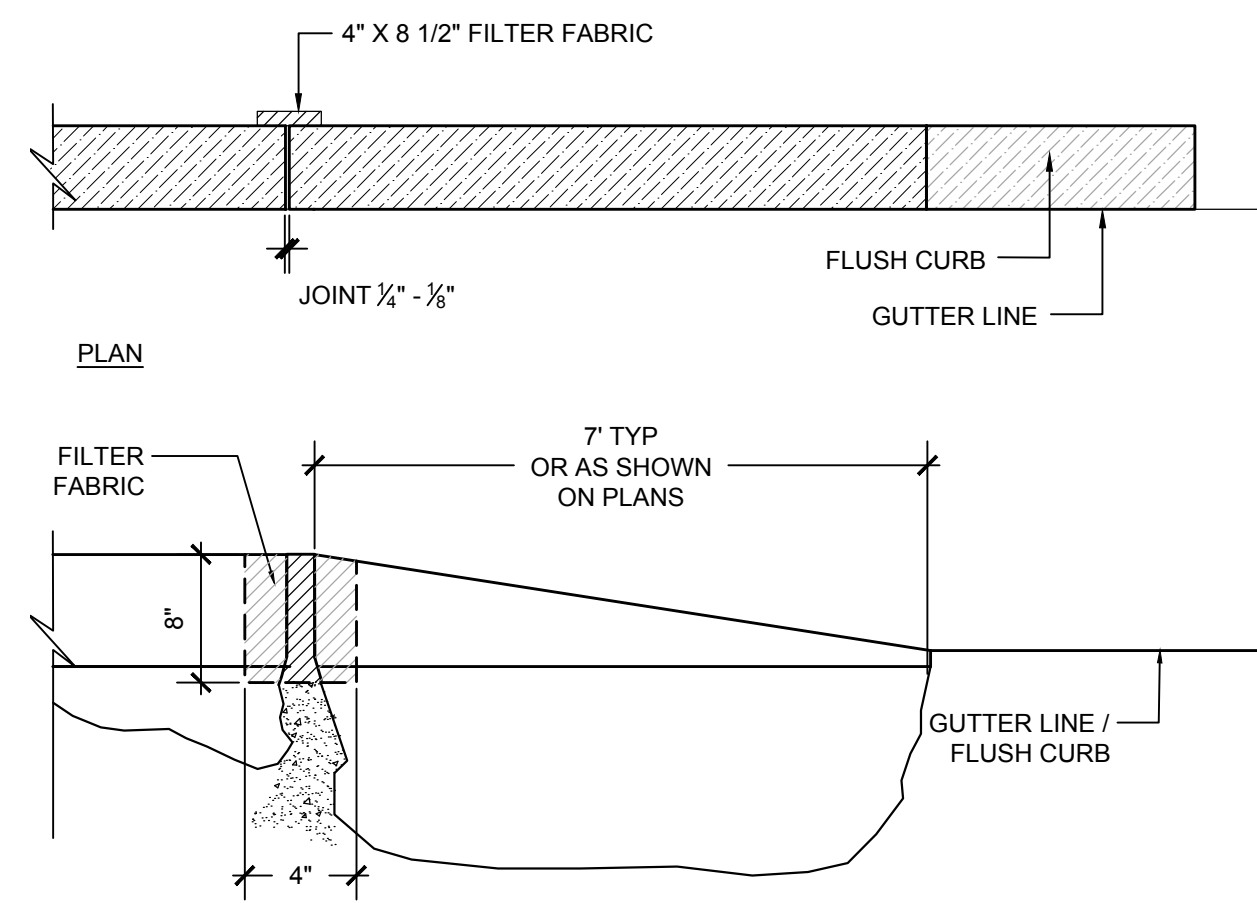
Drawing Number:

L-6.0

© 2016 CARROLL ASSOCIATES



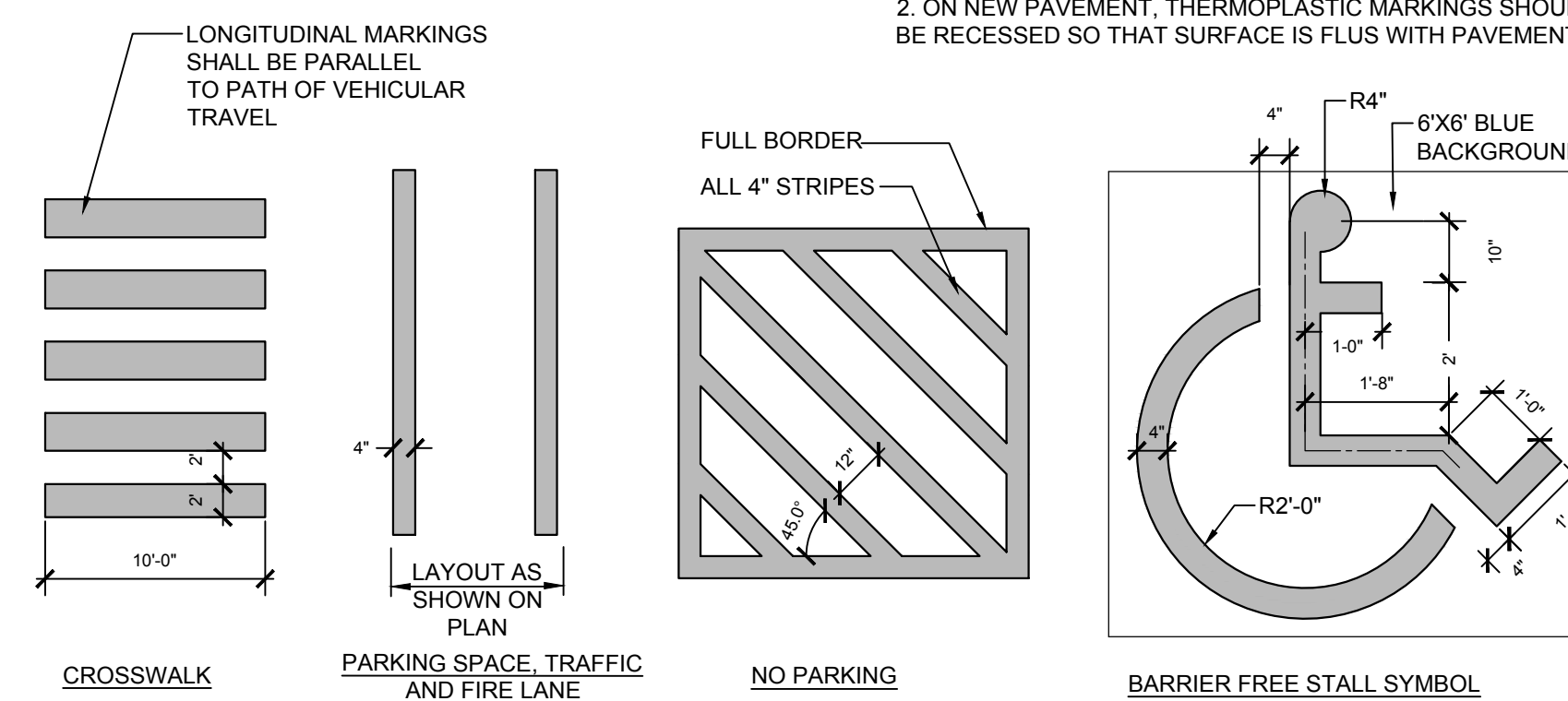
X PAVEMENT CUTTING/MATCHING
NOT TO SCALE



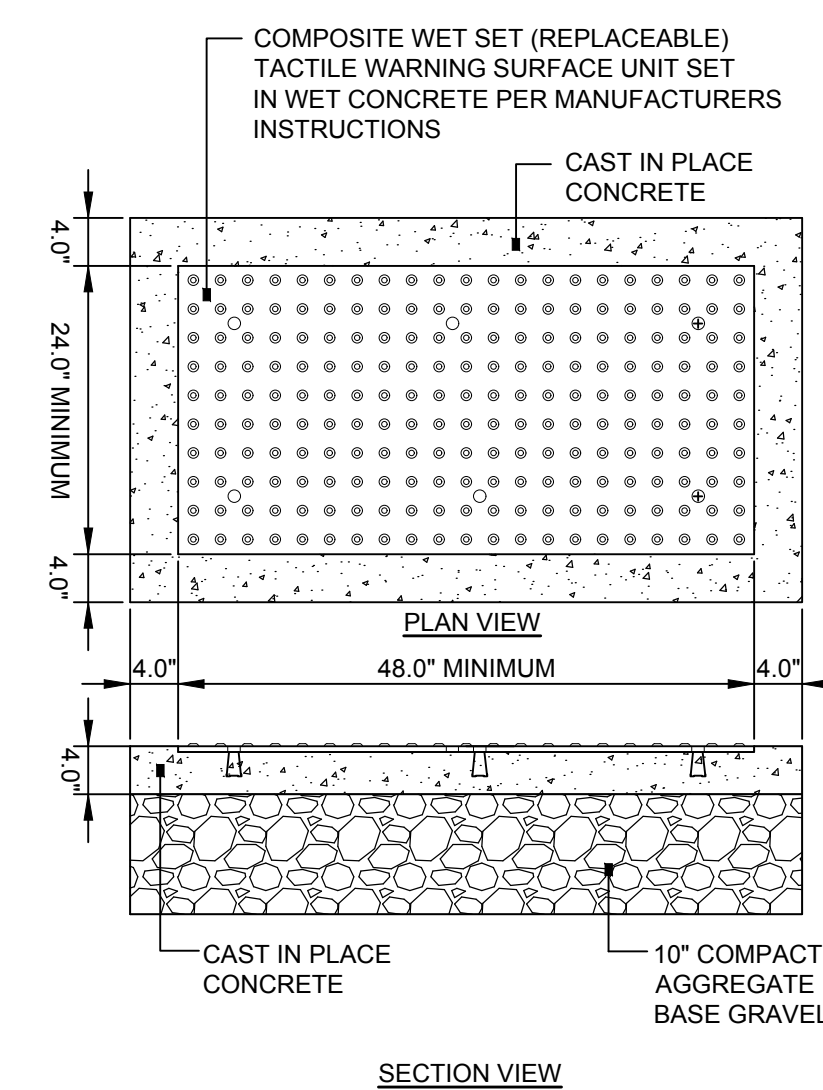
X TIP DOWN CURB
NOT TO SCALE

NOTE:

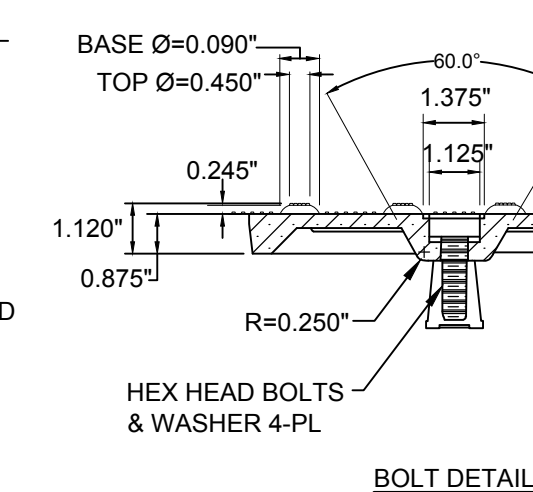
1. ALL MARKINGS SHOULD CONSIST OF NON-SKID, THERMOPLASTIC, RETRO-REFLECTIVE MATERIAL
2. ON NEW PAVEMENT, THERMOPLASTIC MARKINGS SHOULD BE RECESSED SO THAT SURFACE IS FLUS WITH PAVEMENT



X PAINT STRIPING
NOT TO SCALE



X SIDEWALK RAMP DETECTABLE WARNING TILE
NOT TO SCALE



NOTES:

1. COMPOSITE WET SET (REPLACEABLE) TACTILE WARNING SURFACE UNITS SHALL BE AS MANUFACTURED BY ADA SOLUTIONS, INC. (WWW.ADATILE.COM), OR APPROVED EQUAL.
2. CAST IN PLACE CONCRETE SHALL MEET SPECIFICATIONS FOR MDOT CLASS A STRUCTURAL CONCRETE. MINIMUM COMPRESSIVE STRENGTH 4,000 PSI. THE CONCRETE SHALL BE SEALED PRIOR TO SETTING PANELS. THE EXPOSED CONCRETE BORDER SHALL RECEIVE A GROOVED EDGE BETWEEN THE TILE AND CONCRETE, ALONG WITH A UNIFORM BROOM FINISH PERPENDICULAR TO THE FLOW OF PEDESTRIAN TRAFFIC.
3. TRUNCATED DOMES SHALL BE ALIGNED IN ROWS, PARALLEL AND PERPENDICULAR TO THE PREDOMINANT DIRECTION OF TRAVEL. TRUNCATED DOME BRICKS AND GRANITE PAVERS ARE NOT ALLOWED.
4. FOR ALL SIDEWALK RAMP MADE OF CONCRETE OR ASPHALT, FEDERAL YELLOW COLORED (#33538) TILES SHALL BE USED. FOLLOW MANUFACTURER'S INSTRUCTIONS FOR INSTALLATION.
5. FOR ALL SIDEWALK RAMP MADE OF BRICK, SEATTLE YELLOW (#23594) COATED COLORED TILES SHALL BE USED.

NOT FOR CONSTRUCTION