

Owner / Developer:
Steven & Roberta Cope
172 Concord Street
Portland, Maine 04103

Consultants:



Architect
Kevin Moquin, Architect
Hammond Street
Portland, Maine 04104
207.615-6421



Landscape Architect
Carroll Associates
217 Commercial Street
Portland, Maine 04101
207.772.1552

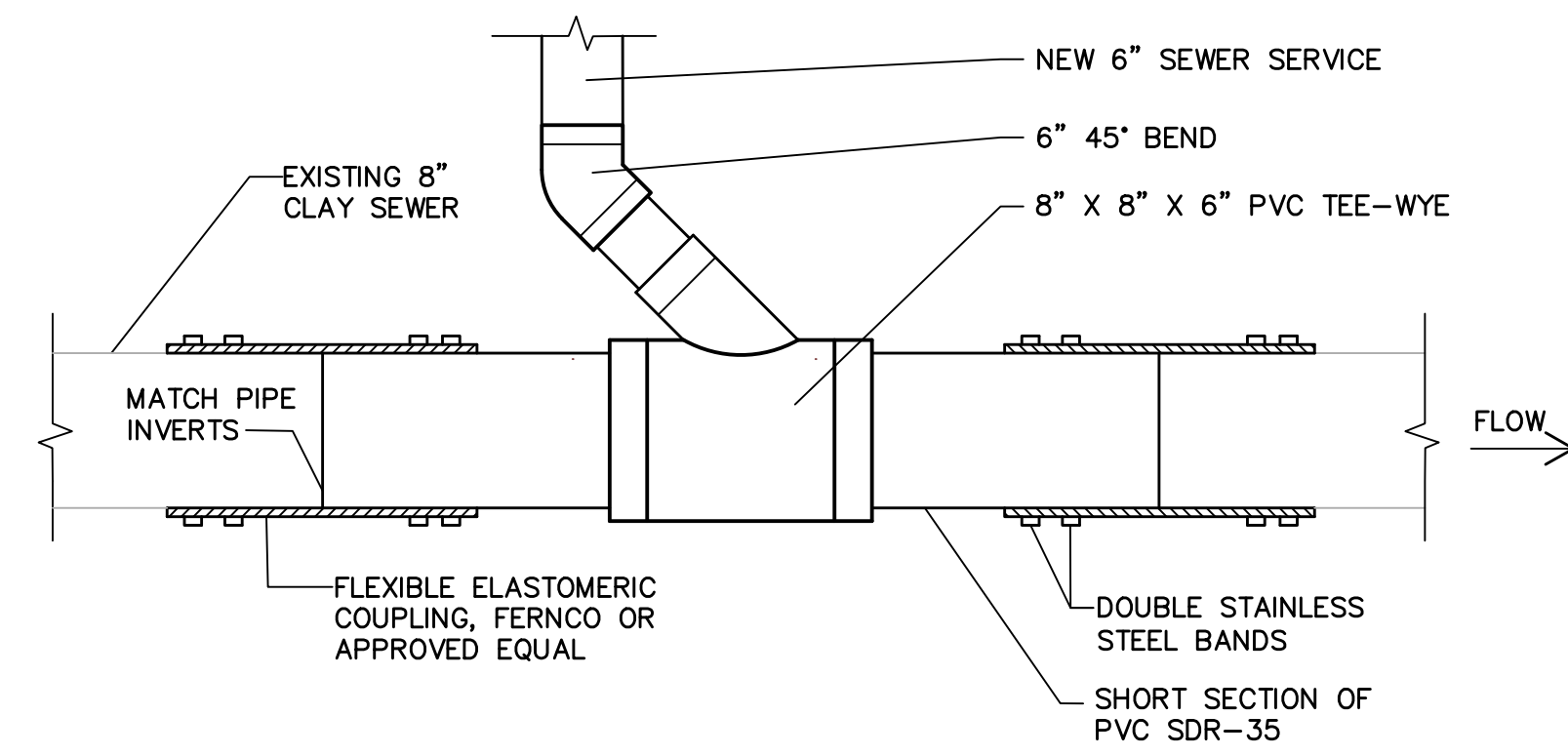


Civil Engineer
Ransom Consulting, Inc.
400 Commercial Street, Suite 404
Portland, Maine 04101
207-772-2891



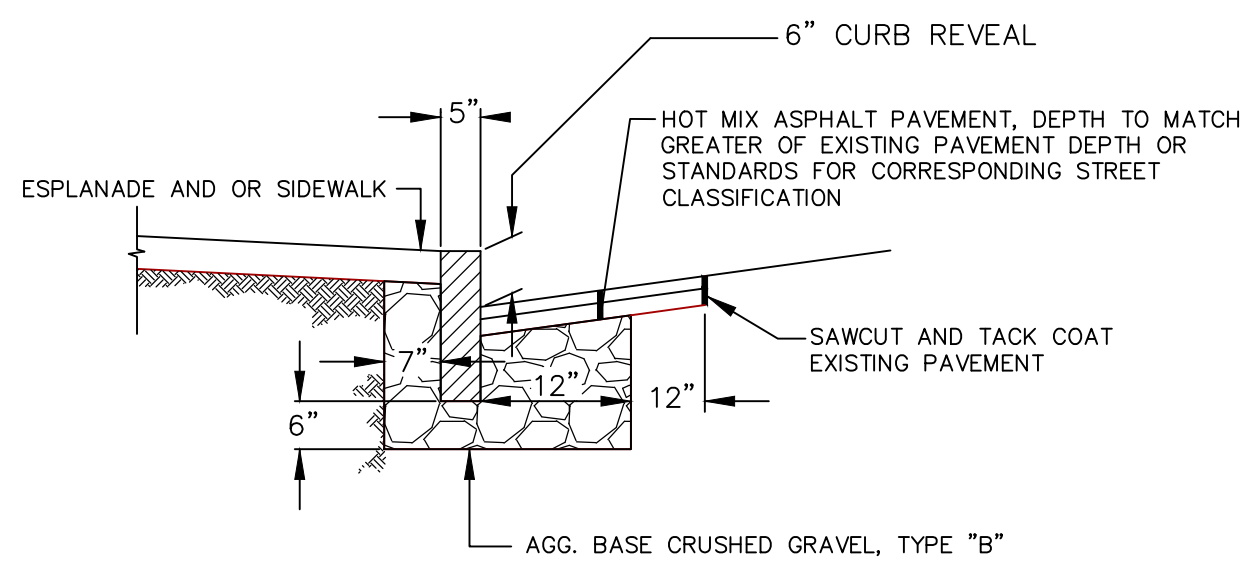
CIVIL DETAILS

No.	Revision/Issue	Date
A	SITE PLAN PERMITTING	6-6-16
Design by:	JIM	Checked by: SJB
Drawn by:	JIM	Approved by: SJB
Project:	161.06035	
Sheet No:	C2	



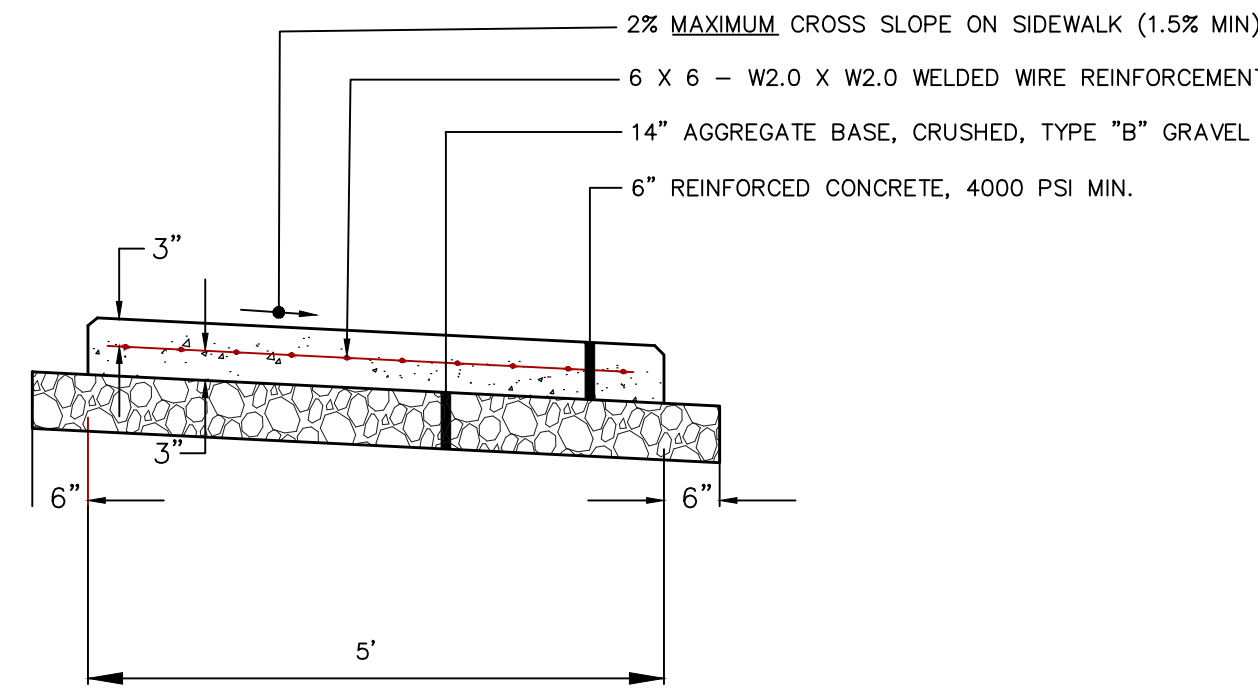
- If the existing sewer is PVC then the connection shall be made using bell and spigot joints, NOT Ferncos.
- All damaged piping shall be removed by saw cutting or removing an entire segment of pipe and replaced with new PVC. Contractor shall remove clay bell(s) (by saw cutting) to facilitate Fernco installation. Saw cuts shall be square so that joints between new and existing pipes do not have gaps, particular attention shall be paid to maintaining a smooth invert.
- Contractor is responsible for maintaining sewer flows while while making the new sewer service and drain connections. If required, bypass pumping shall be coordinated with the City. Contractor shall provide the City 24 hours notice.
- Bypass pumping may be required and shall be coordinated with the City

CONNECTION TO SANITARY SEWER
NOT TO SCALE

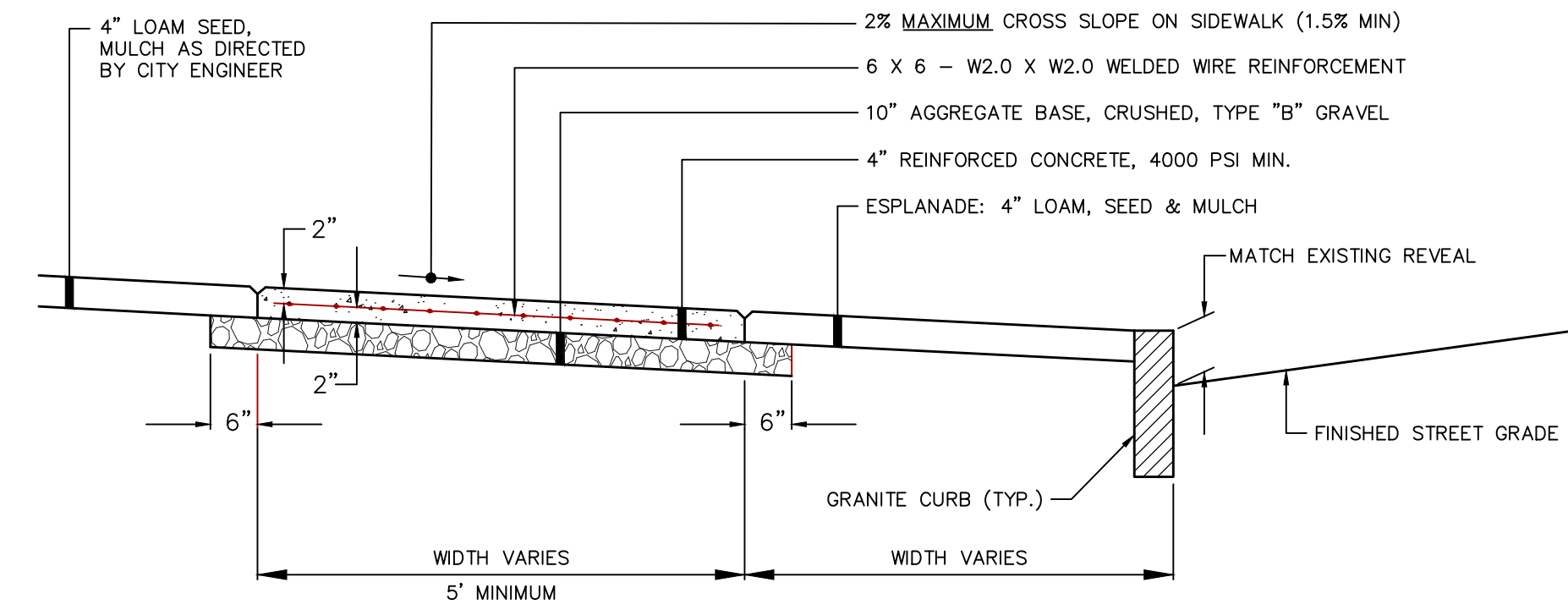


VERTICAL GRANITE CURB CROSS SECTION

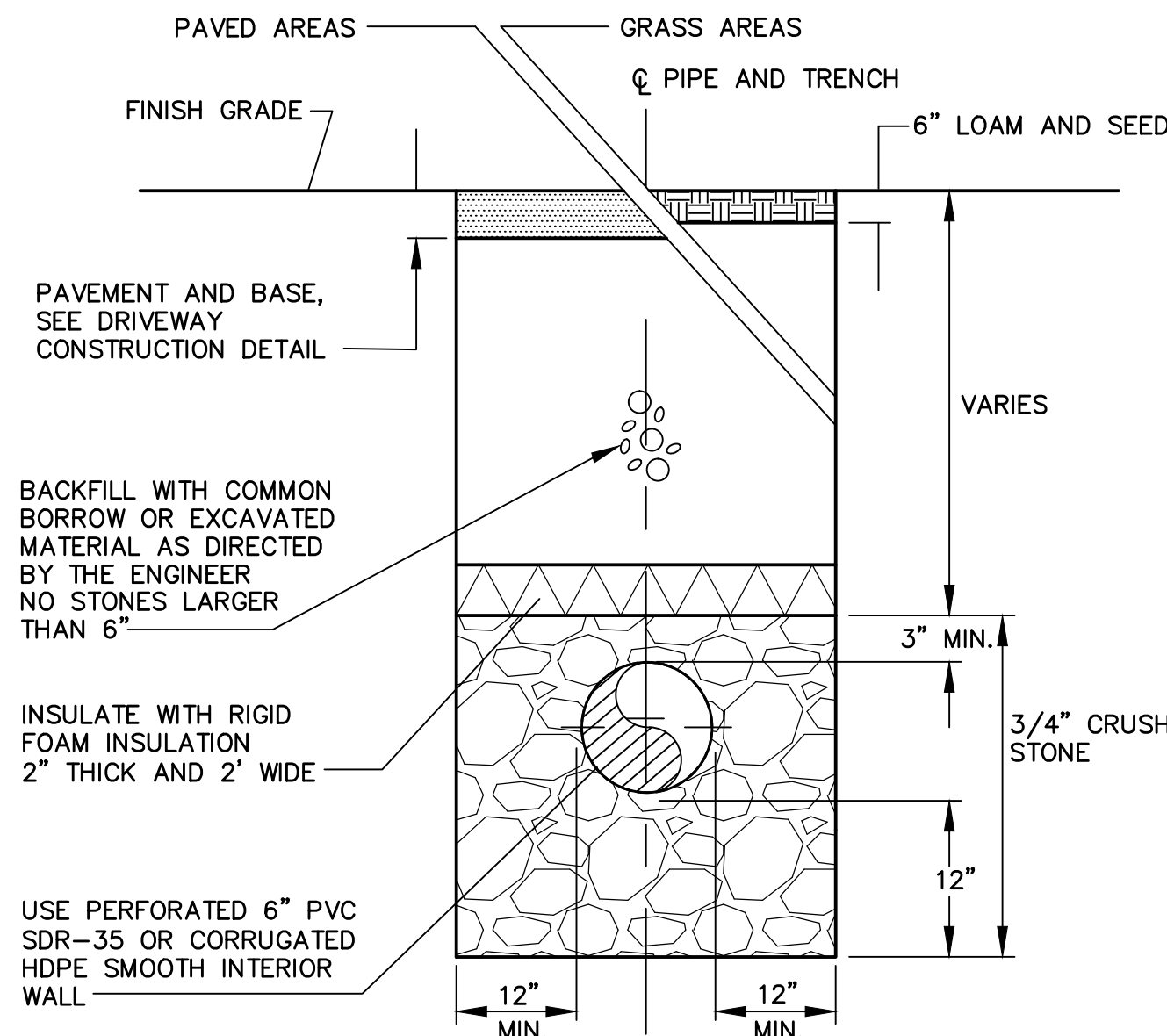
VERTICAL GRANITE CURB INSTALLATION IN EXISTING STREETS
NOT TO SCALE



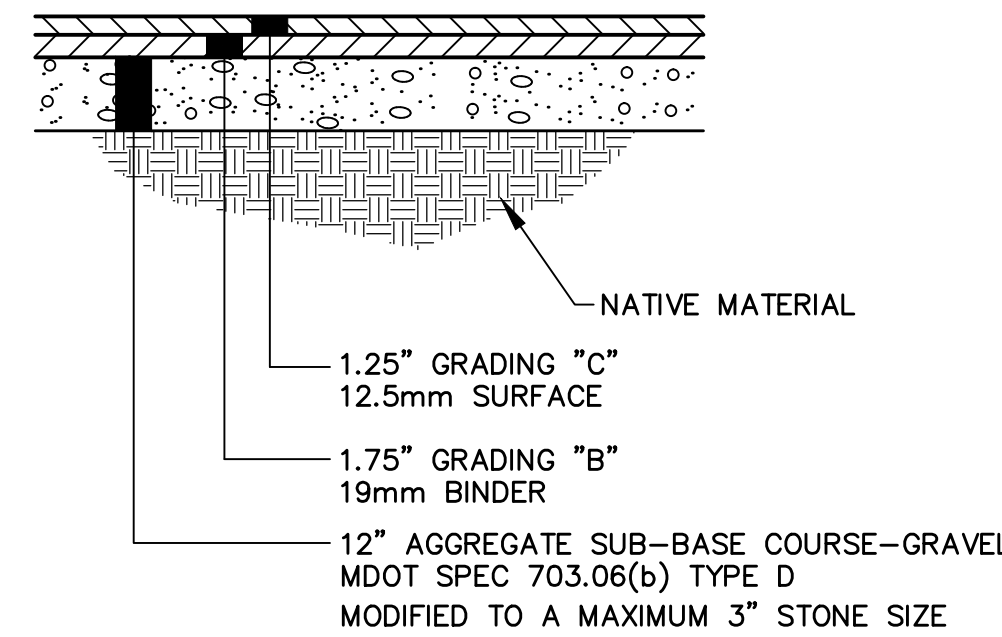
REINFORCED CONCRETE DRIVEWAY APRON
NOT TO SCALE



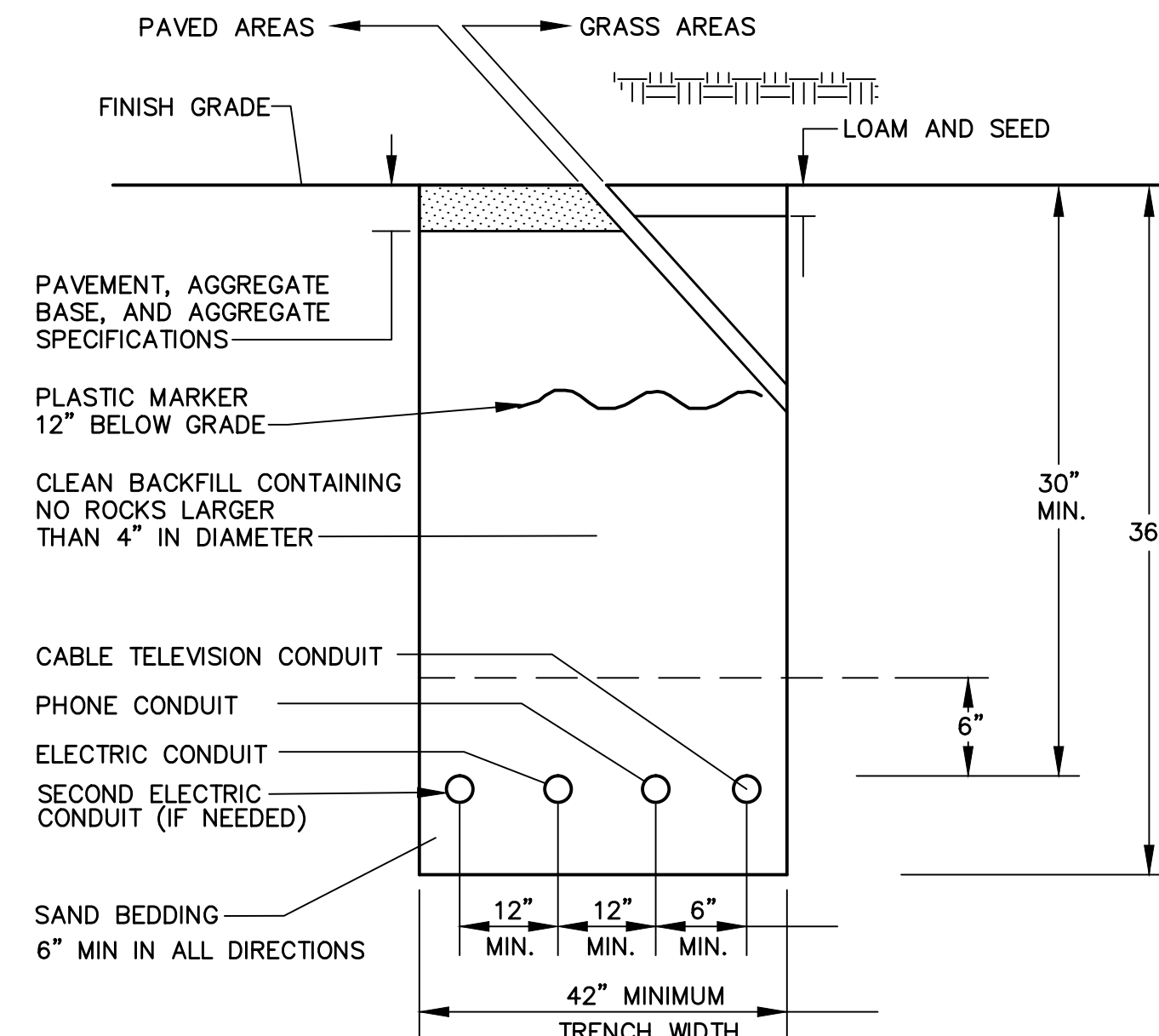
REINFORCED CONCRETE SIDEWALK
NOT TO SCALE



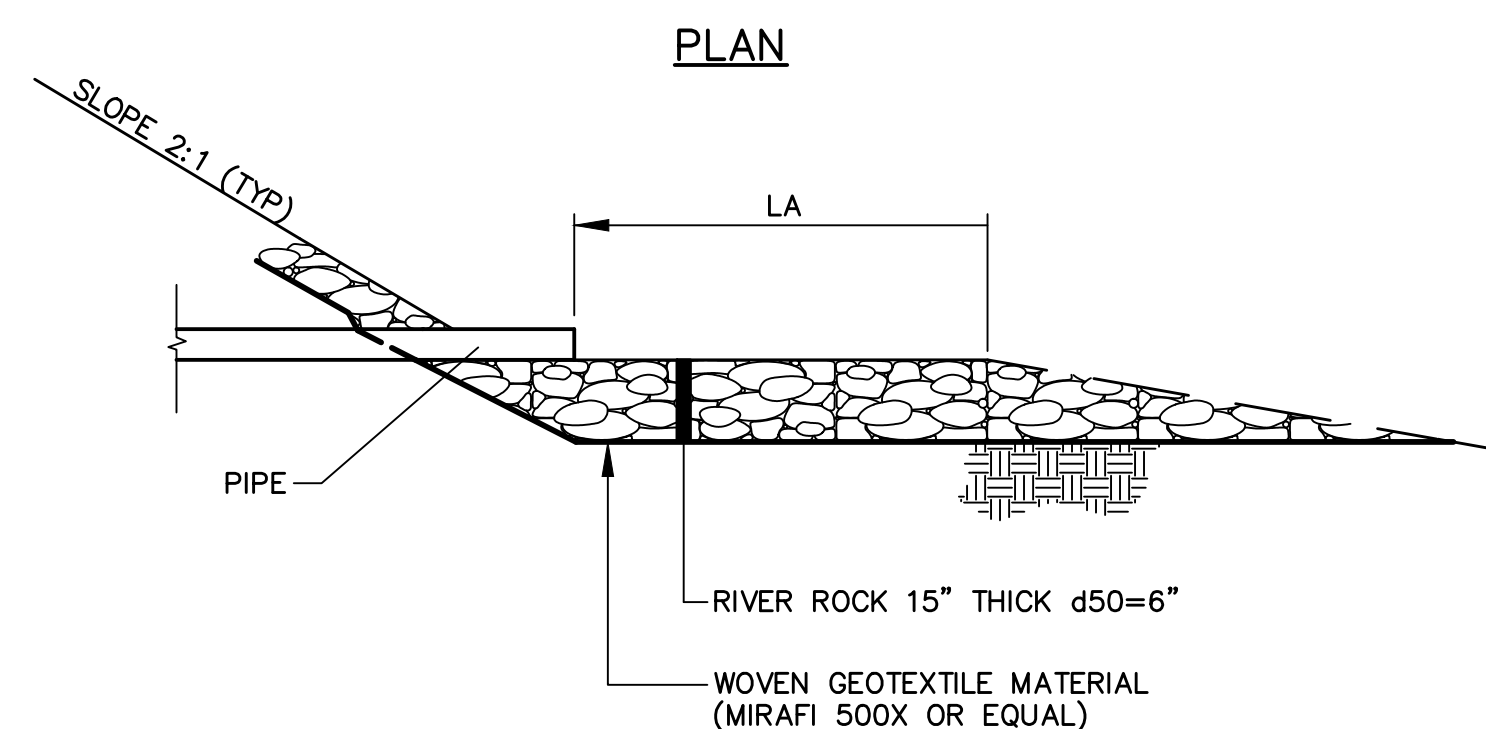
UNDERDRAIN DETAIL FOR ROOF DRAIN COLLECTION SYSTEM
NOT TO SCALE



TYPICAL DRIVEWAY CONSTRUCTION OUTSIDE OF RIGHT OF WAY
NOT TO SCALE



UNDERGROUND ELECTRIC/COMMUNICATIONS UTILITY TRENCH DETAIL
NOT TO SCALE

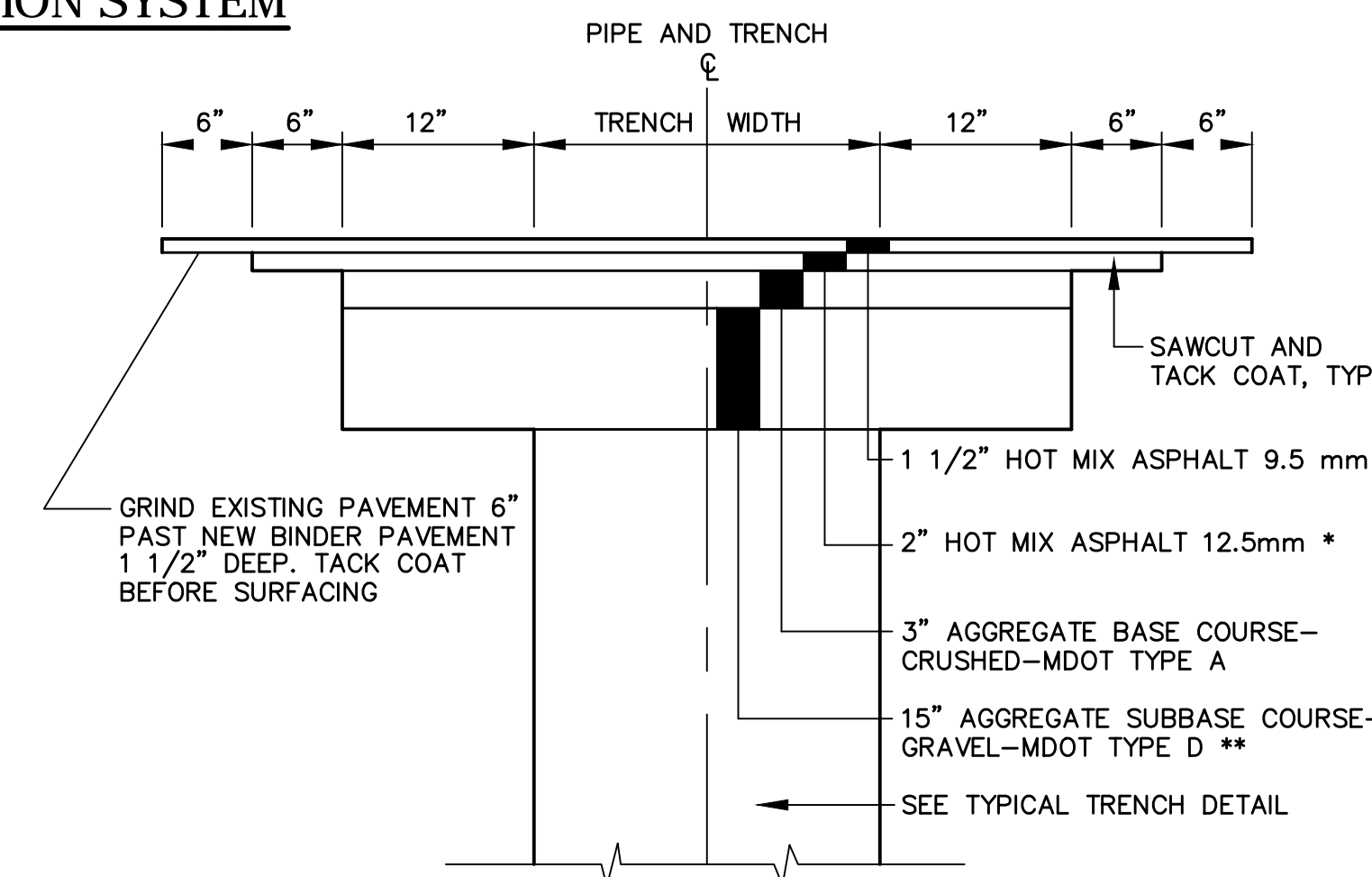


SECTION A-A

APRON SCHEDULE*					
PIPE	RIPRAP**		RIPRAP**		
	d50 SIZE (FT)	THICKNESS t (INCH)	LENGTH LA (FT) (MIN)	WIDTH W1 (FT)	WIDTH W2 (FT)
12" OR LESS	0.5'	15"	10'	3.0'	12'

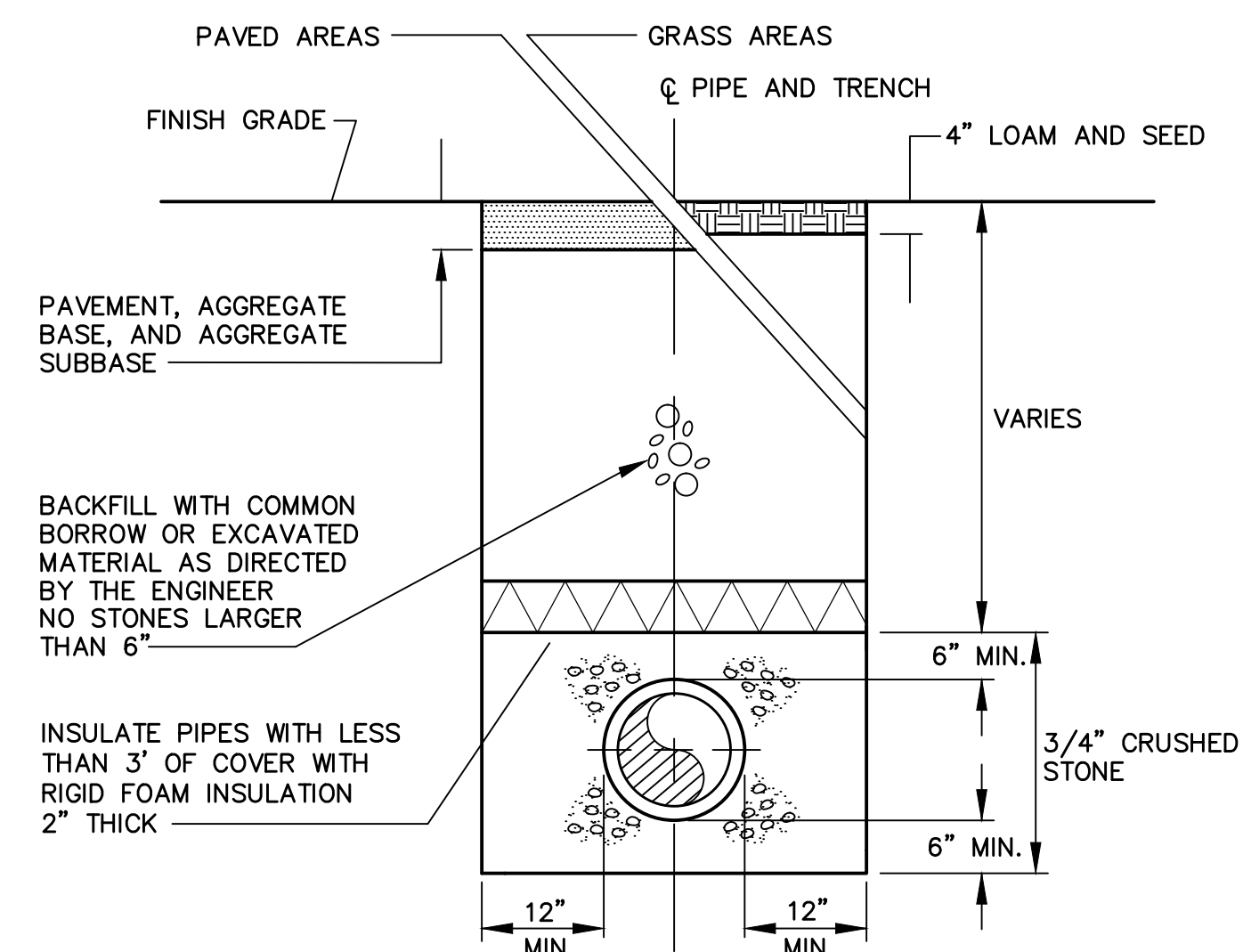
* SEE PLANS FOR SHAPE/SIZE OF ENERGY DISSIPATORS
** RIP RAP SHALL CONSIST OF ROUND NATURAL STONE SUCH AS RIVER ROCK

ENERGY DISSIPATER (RIVER ROCK) DETAIL
NOT TO SCALE



TYPICAL TRENCH PAVING DETAIL
NOT TO SCALE

* ON OCEAN AVENUE 12.5 mm HMA BASE SHALL BE 2.5" THICK
** ON OCEAN AVENUE TYPE D SUB BASE GRAVEL SHALL BE 18" THICK



TYPICAL TRENCH REPAIR DETAIL
NOT TO SCALE