



1 : East Elevation : 1/8 in = 1 ft



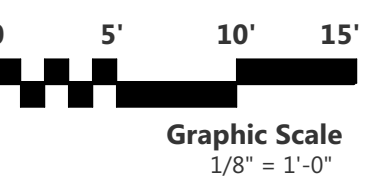
2 : North Elevation : 1/8 in = 1 ft



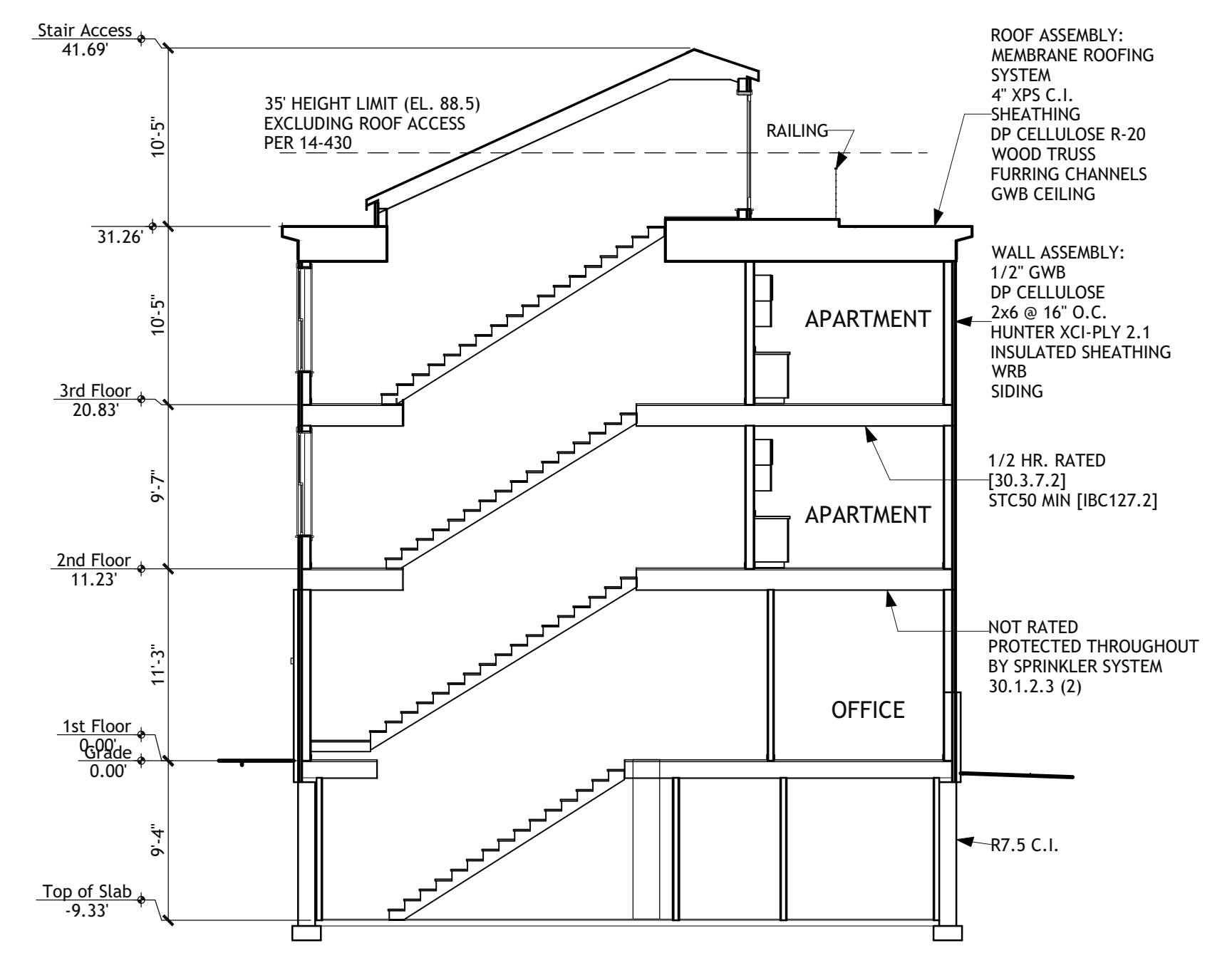
3 : West Elevation : 1/8 in = 1 ft



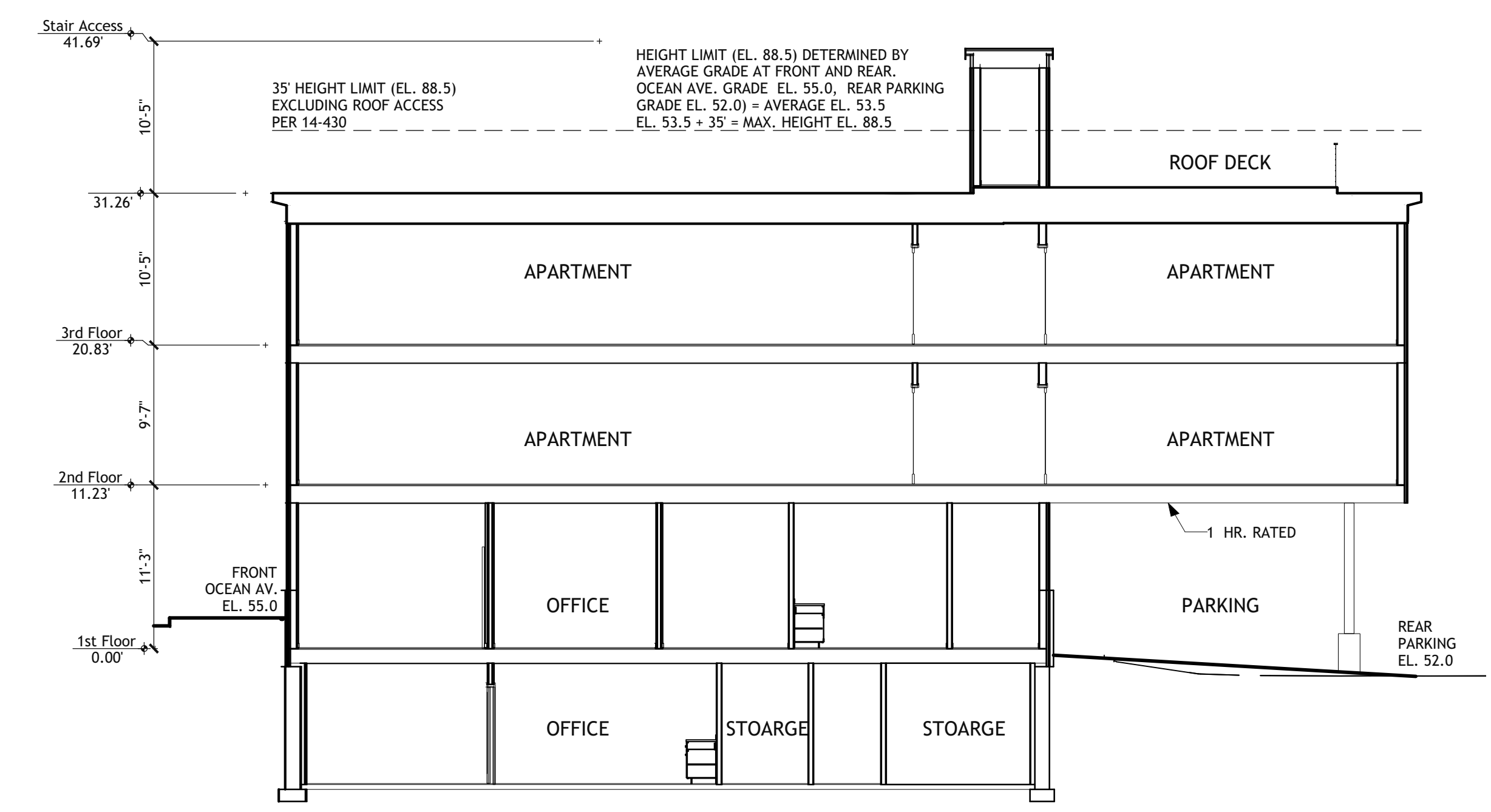
4 : South Elevation : 1/8 in = 1 ft



Kevin Moquin Architect
 Portland, ME
 Info@km-a.me
 (207)-615-6421
 Revisions:



5 : Section at Stair : 1/8 in = 1 ft



6 : Longitudinal Section : 1/8 in = 1 ft

23 Ocean
 Portland, ME

ELEVATIONS
 & SECTIONS
 6/6/2016
A-2.1
 PROGRESS PRINT
 3 of 3