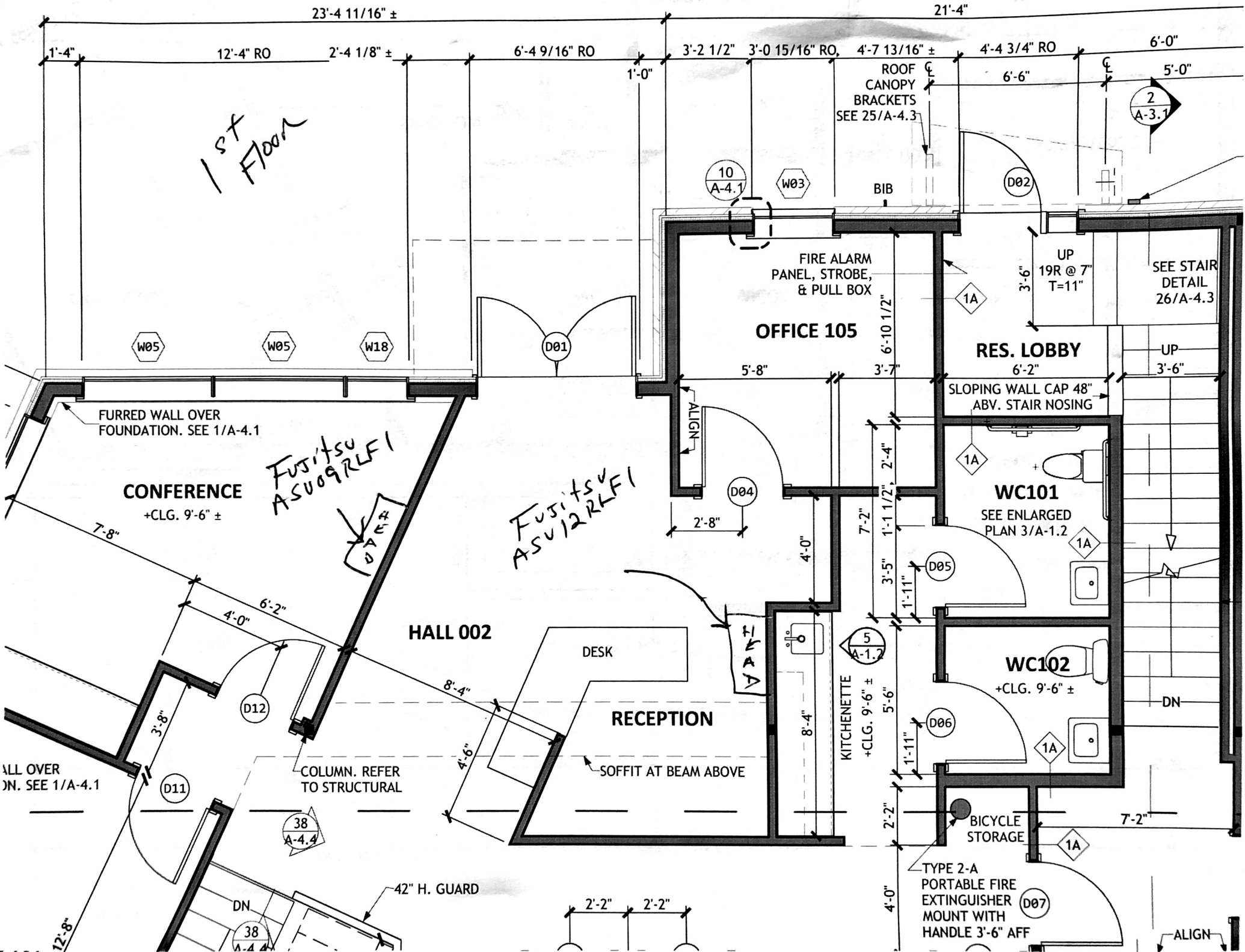


1st Floor



23'-4 11/16" ±

21'-4"

1'-4" 12'-4" RO 2'-4 1/8" ± 6'-4 9/16" RO 1'-0" 3'-2 1/2" 3'-0 15/16" RO 4'-7 13/16" ± 4'-4 3/4" RO 6'-0" 5'-0"

ROOF CANOPY BRACKETS SEE 25/A-4.3

2 A-3.1

10 A-4.1

W03

BIB

D02

UP 19R @ 7" T=11"

SEE STAIR DETAIL 26/A-4.3

FIRE ALARM PANEL, STROBE, & PULL BOX

RES. LOBBY

UP 3'-6"

FURRED WALL OVER FOUNDATION. SEE 1/A-4.1

CONFERENCE +CLG. 9'-6" ±

Fujitsu ASU09RLF

Fujitsu ASU12RLF

SLOPING WALL CAP 48" ABV. STAIR NOSING

WC101

SEE ENLARGED PLAN 3/A-1.2

HALL 002

DESK

RECEPTION

SOFFIT AT BEAM ABOVE

KITCHENETTE +CLG. 9'-6" ±

WC102 +CLG. 9'-6" ±

BICYCLE STORAGE

TYPE 2-A PORTABLE FIRE EXTINGUISHER MOUNT WITH HANDLE 3'-6" AFF

ALL OVER DN. SEE 1/A-4.1

COLUMN. REFER TO STRUCTURAL

42" H. GUARD

2'-2" 2'-2"

ALIGN

DN

38 A-4.4

38 A-4.4

5 A-1.2

D06

1A

1A

4'-0"

D07

D11

D12

D04

D05

12'-8"

DN

38 A-4.4

DN

DN