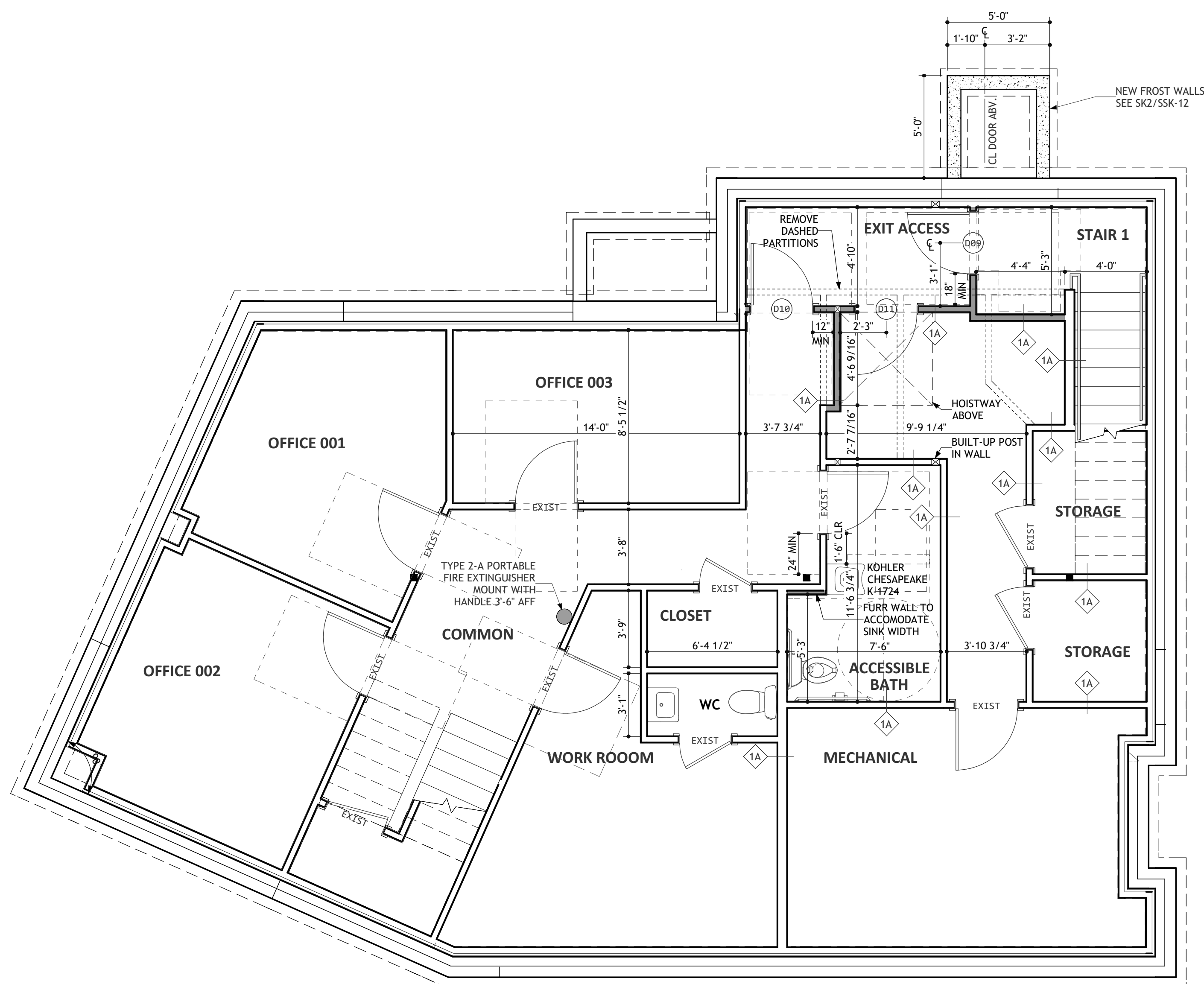


4 : Hoistway Section : 1/4 in = 1 ft



3 : Partial Basement : 1/4 in = 1 ft

NUMBER	QTY	FLOOR	WIDTH	HEIGHT	DESCRIPTION	COMMENTS
D01	1	1	36"	80"	HINGED-DOOR P01	CLOSER, 1HR RATED
D02	1	2	36"	80"	HINGED-DOOR P01	CLOSER, 1HR RATED
D03	1	2	34"	80"	HINGED-DOOR P01	
D04	1	2	34"	80"	HINGED-DOOR P01	
D05	1	2	30"	80"	HINGED-DOOR P01	
D06	1	2	34"	80"	HINGED-DOOR P01	
D07	1	2	34"	80"	HINGED-DOOR P01	
D08	1	2	34"	80"	HINGED-DOOR P01	
D09	1	0	36"	80"	HINGED-DOOR P01	CLOSER, 1HR RATED
D10	1	0	36"	80"	HINGED-DOOR P01	CLOSER, 1HR RATED
D11	1	0	36"	80"	HINGED-DOOR P01	1 HOUR RATED

LEVER HANDLES TYPICAL

**GA FILE # FC 5111**  
1 HOUR Fire  
50 - 54 STC

Fire Test:  
NRCC A-40.1

Sound Test:  
NRCC B-3150.2

IC & Test:  
(68 C & P) NRCC  
B-3150.2

**Wood Framed Floor-Ceiling System**

- Min. 5/8" OSB
- Min 9 1/2" I-Joist
- Resilient Channel 16" O.C. at right angle to joist
- Base Layer 1/2" Type-X GWB at right angle to channel, 1 1/4" type S screw
- Face Layer 1/2" Type-X GWB at right angle to channel, 1 5/8" type S screw. End joints midway between channel, Edge joints offset 24" from base layer
- 3-1/2" fiberglass sound batt

**Ceiling Types**

**UL U311**  
1 HOUR Fire  
50 STC

**Gypsum Wallboard, Wood Studs**

- One layer 5/8" GWB
- 2X4 wood studs @ 16" O.C.
- 3-1/2" fiberglass sound batt
- Resilient Channel 16" O.C.
- One layer 5/8" GWB

**GA FILE # WP 3239**  
1 HOUR Fire

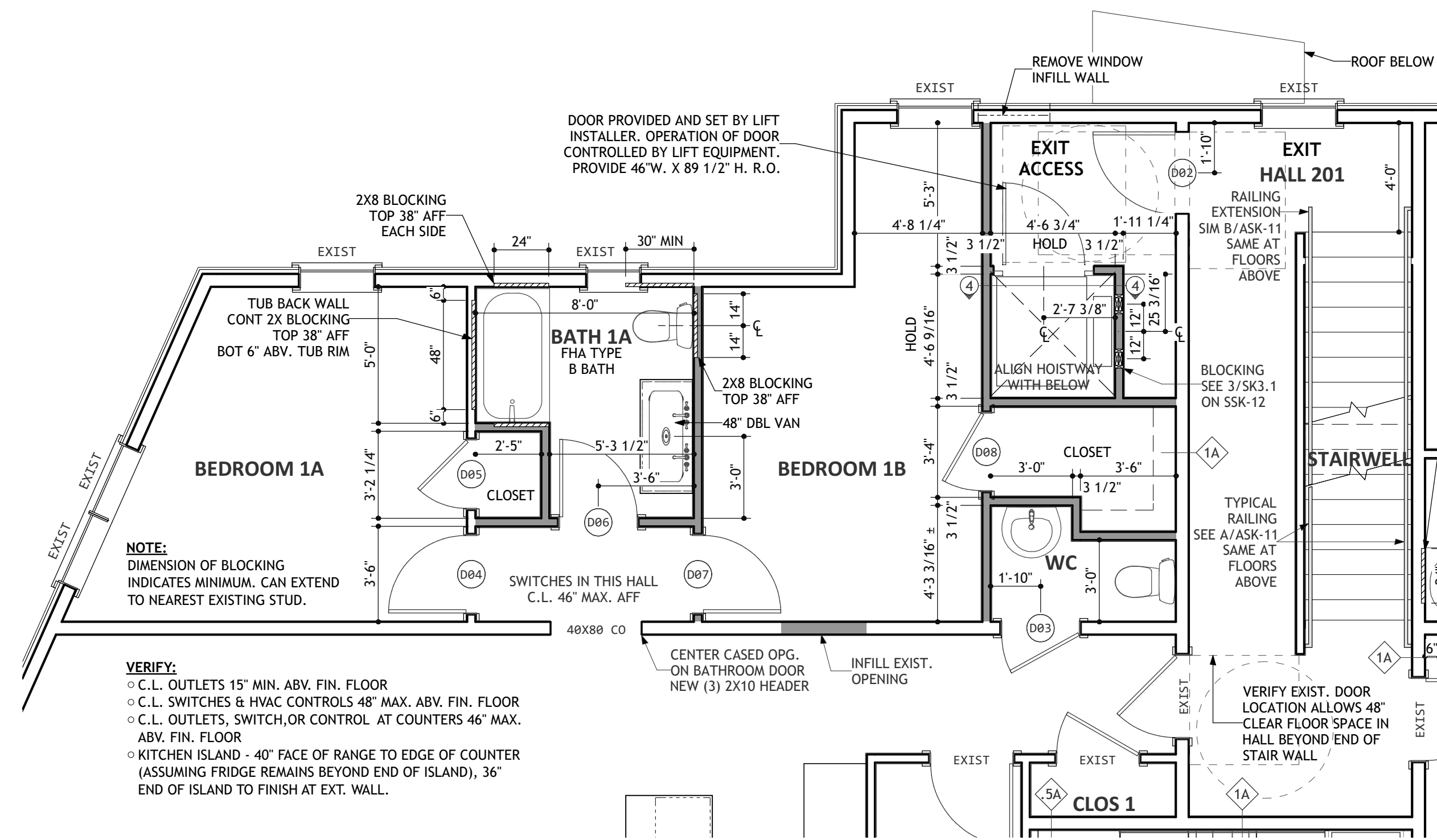
Fire Test:  
UL R1319  
10CA37600

UL Design U327

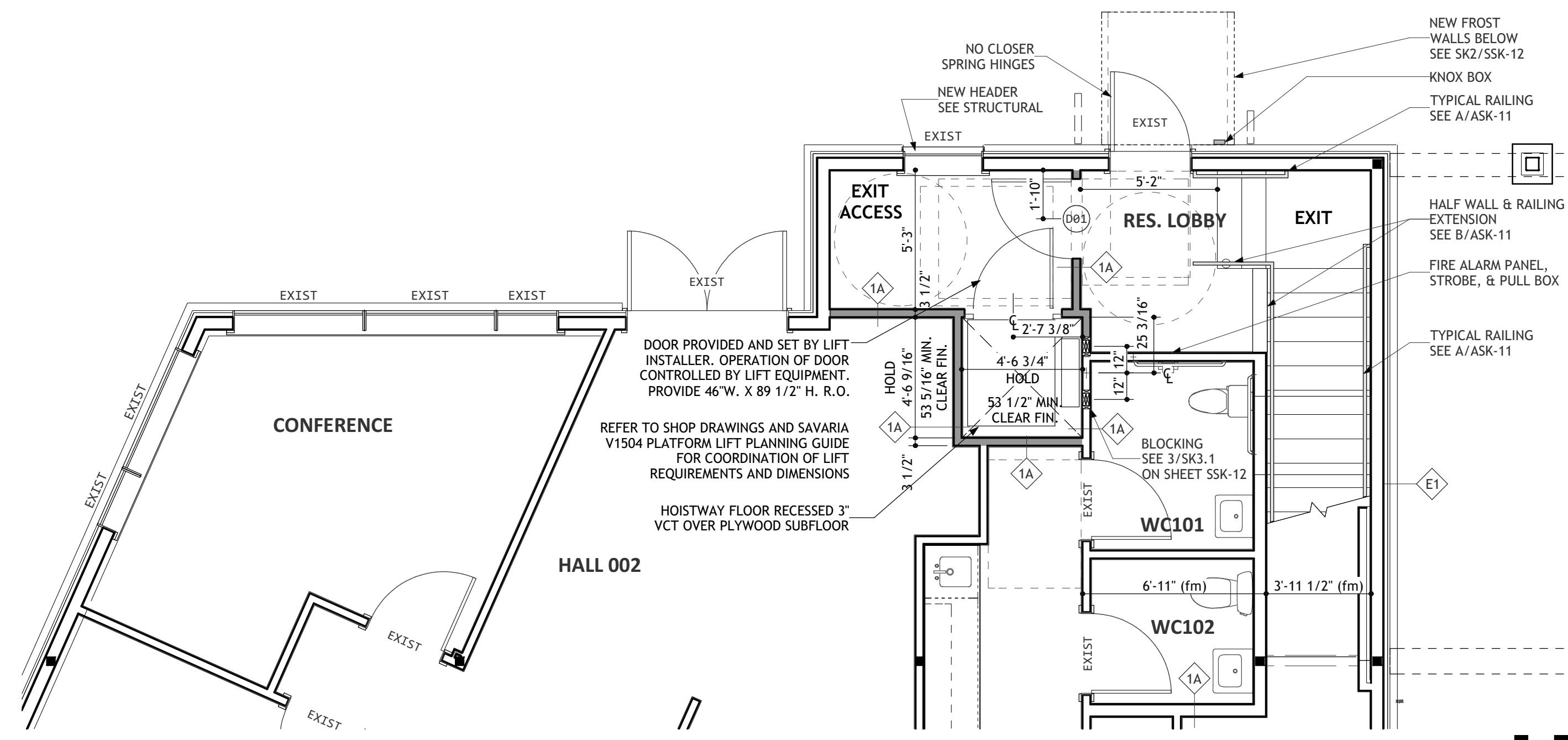
**Gypsum Wallboard, Wood Studs**

- One layer 5/8" Type X GWB each side of 2x stud framing, stagger joints on opposite side.
- 3-1/2" fiberglass sound batt

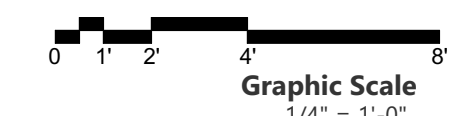
**Wall Types**



2 : Partial 2nd Floor : 1/4 in = 1 ft



1 : Partial 1st Floor : 1/4 in = 1 ft



**km**  
Kevin Moquin Architect  
Maine Licensed Architect  
1 Union St. #203 Portland, ME  
km-a.me - info@km-a.me  
(207) 615-6421

**23 Ocean**  
Portland, ME

PERMIT  
2017-00012  
AMENDMENT

**LICENSED ARCHITECT**  
KEVIN J. MOQUIN  
ARC3016  
MADE OF MAINE

Floor Plans

3/7/2018  
**ASK-10**  
2 of 4