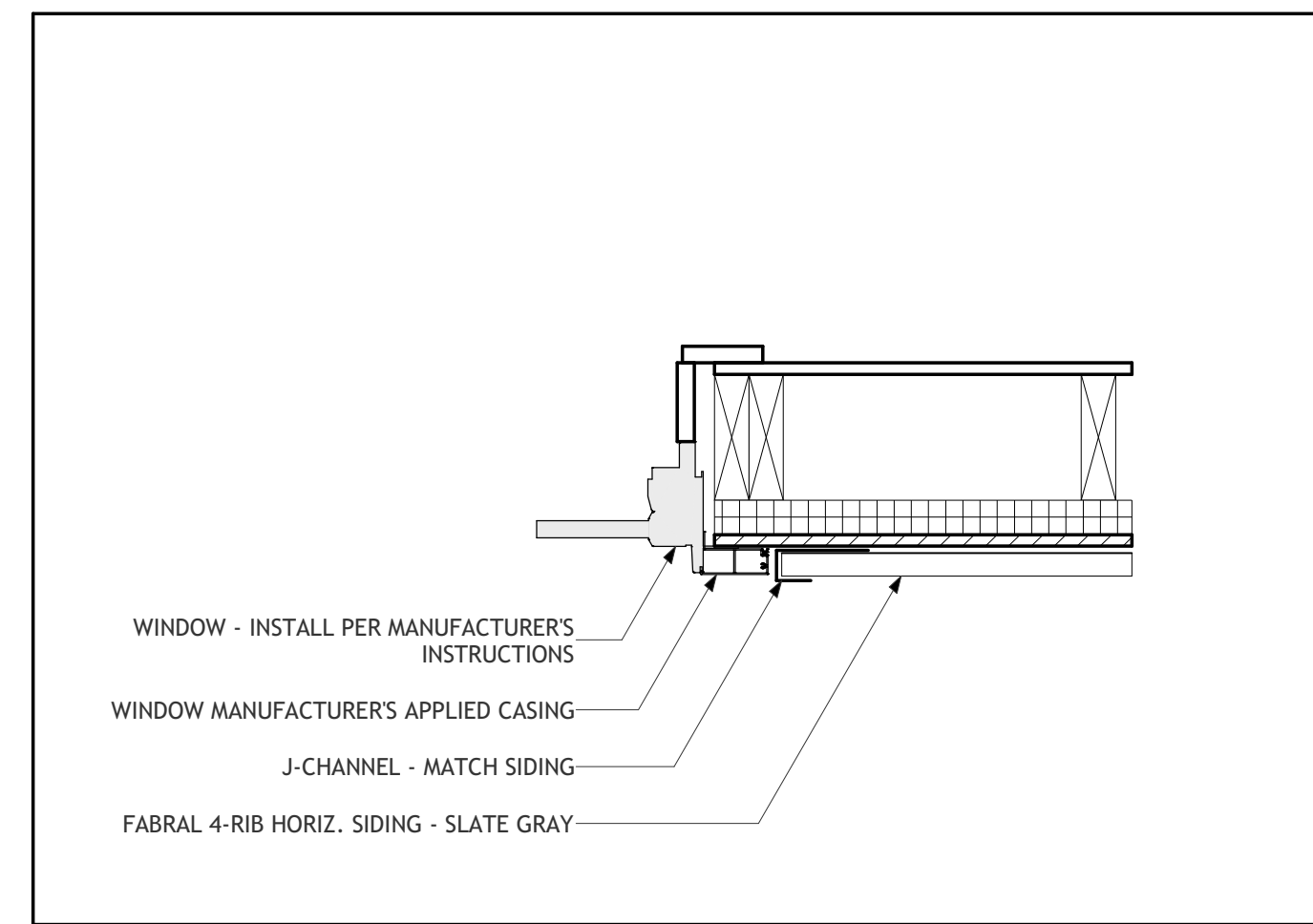
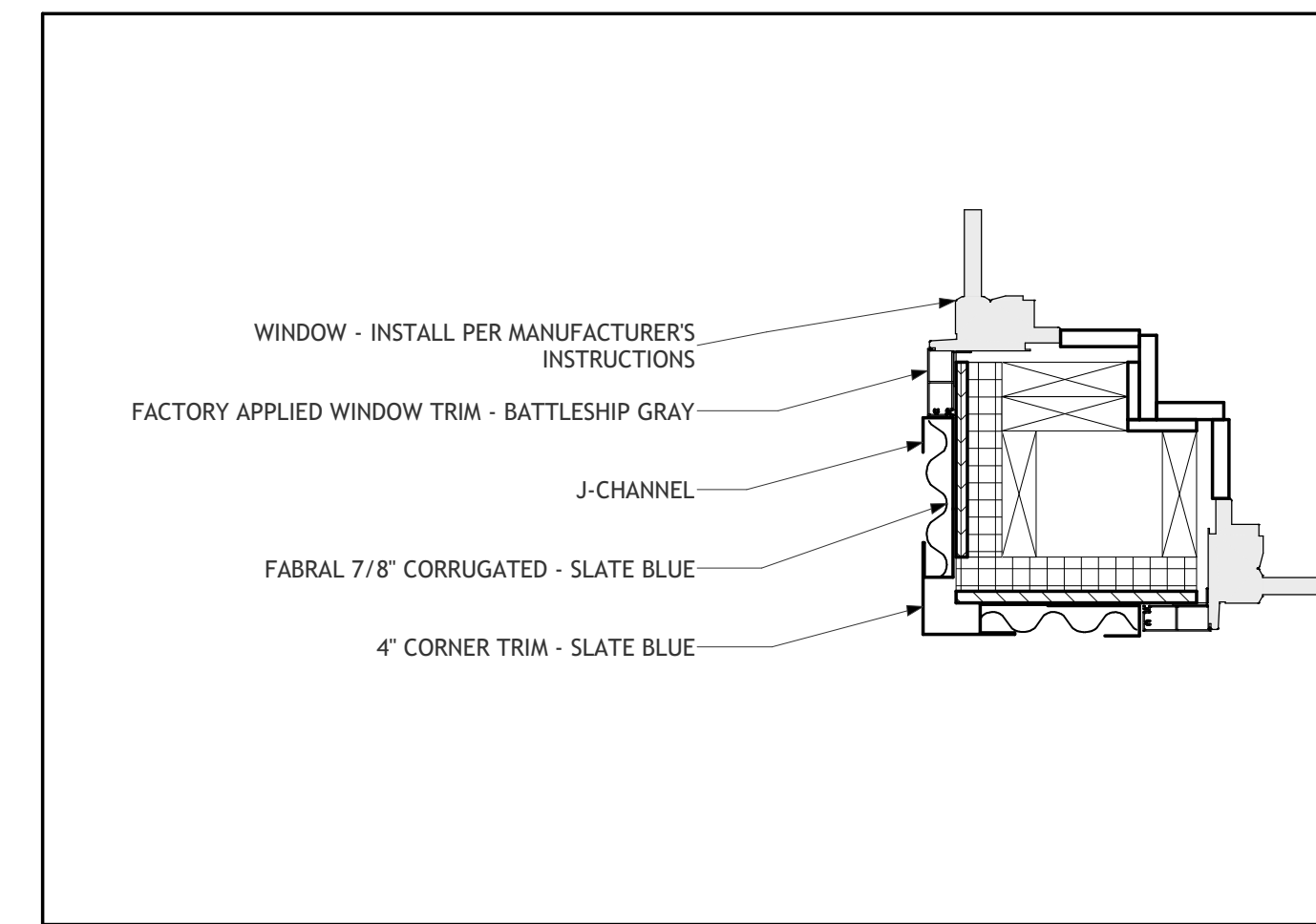


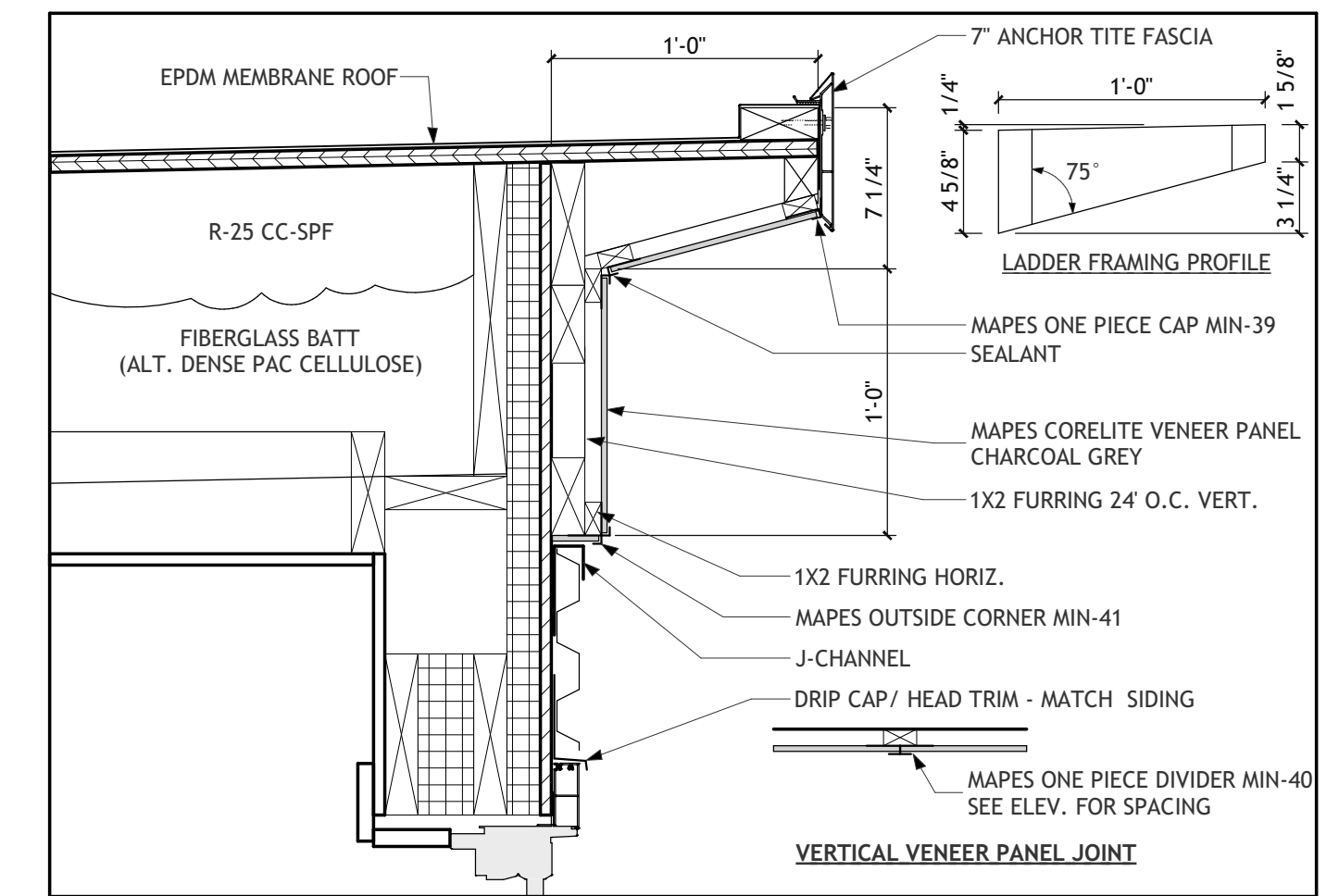
**Metal Siding Profile Transition**  
1 1/2" = 1'-0" **16**



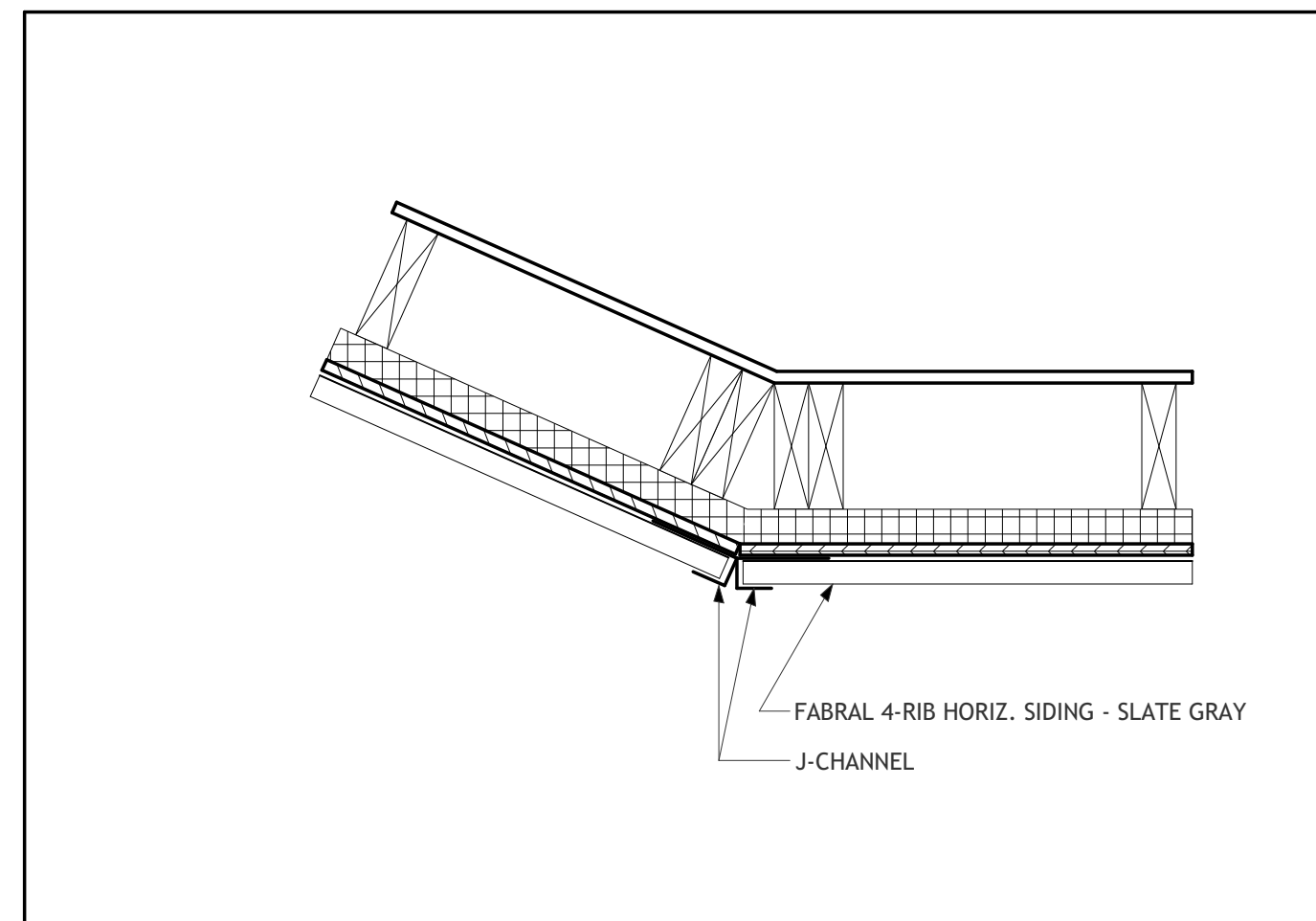
**Jamb at Metal Siding**  
1 1/2" = 1'-0" **12**



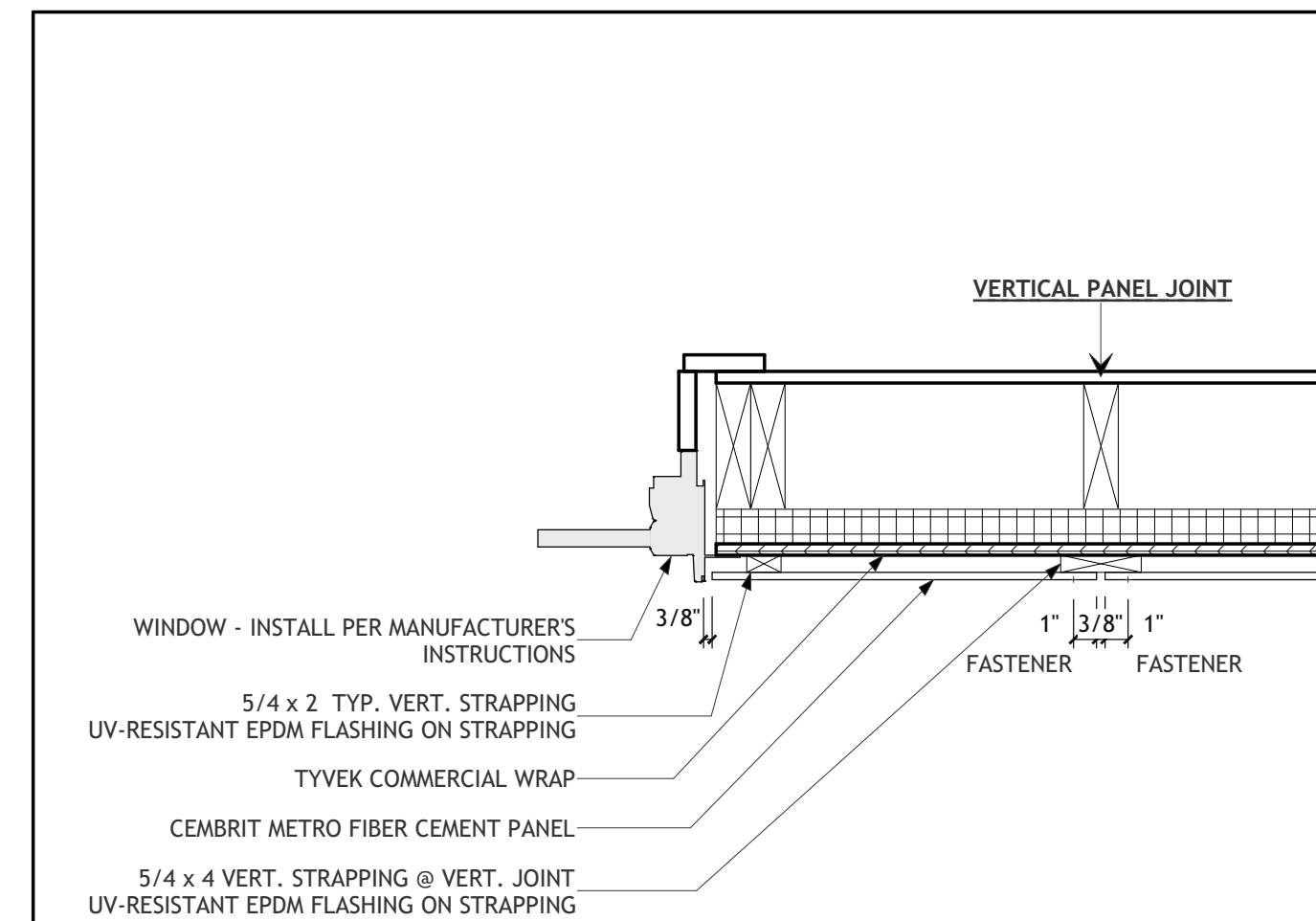
**Corner Window Detail**  
1 1/2" = 1'-0" **8**



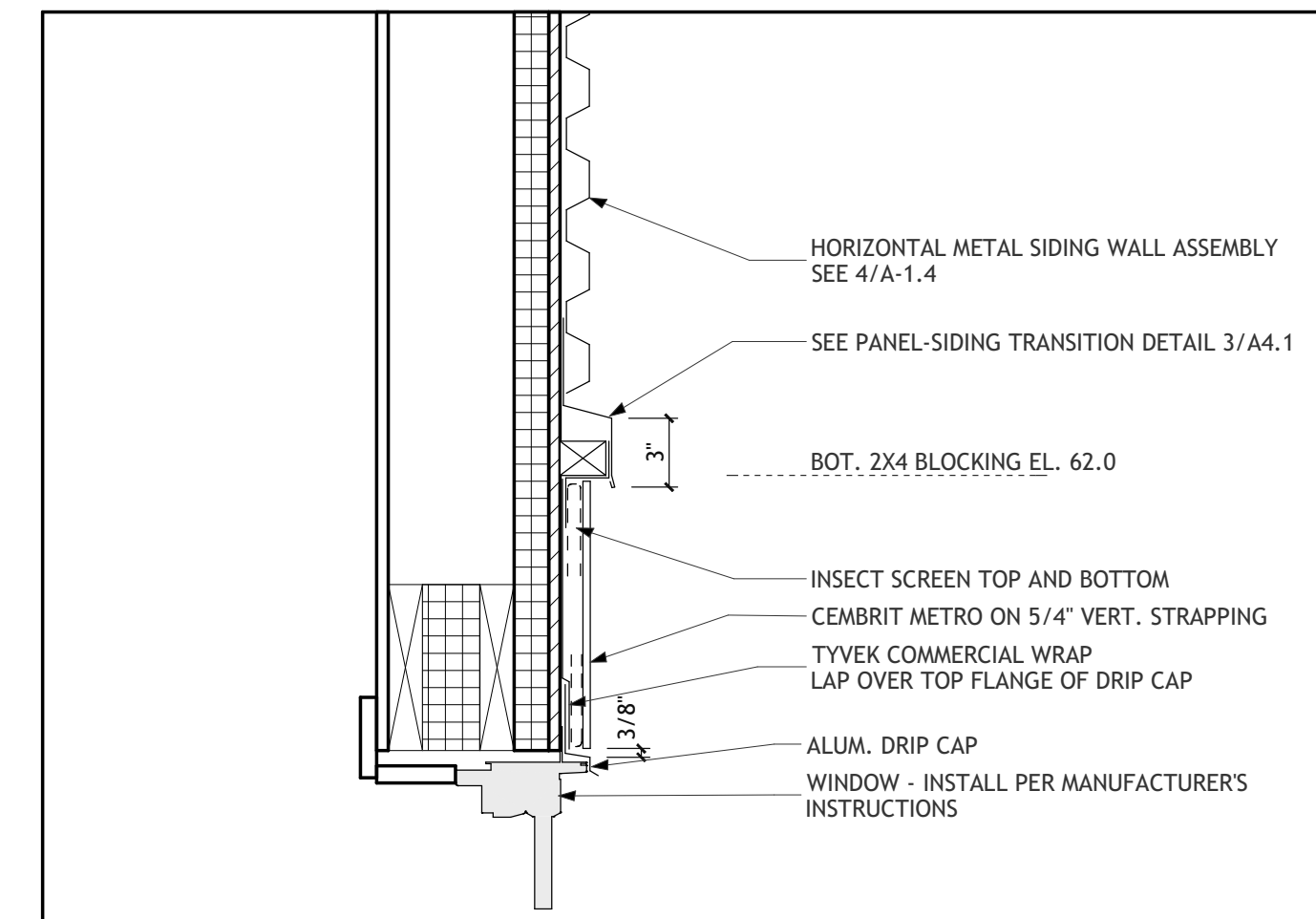
**Cornice**  
1 1/2" = 1'-0" **4**



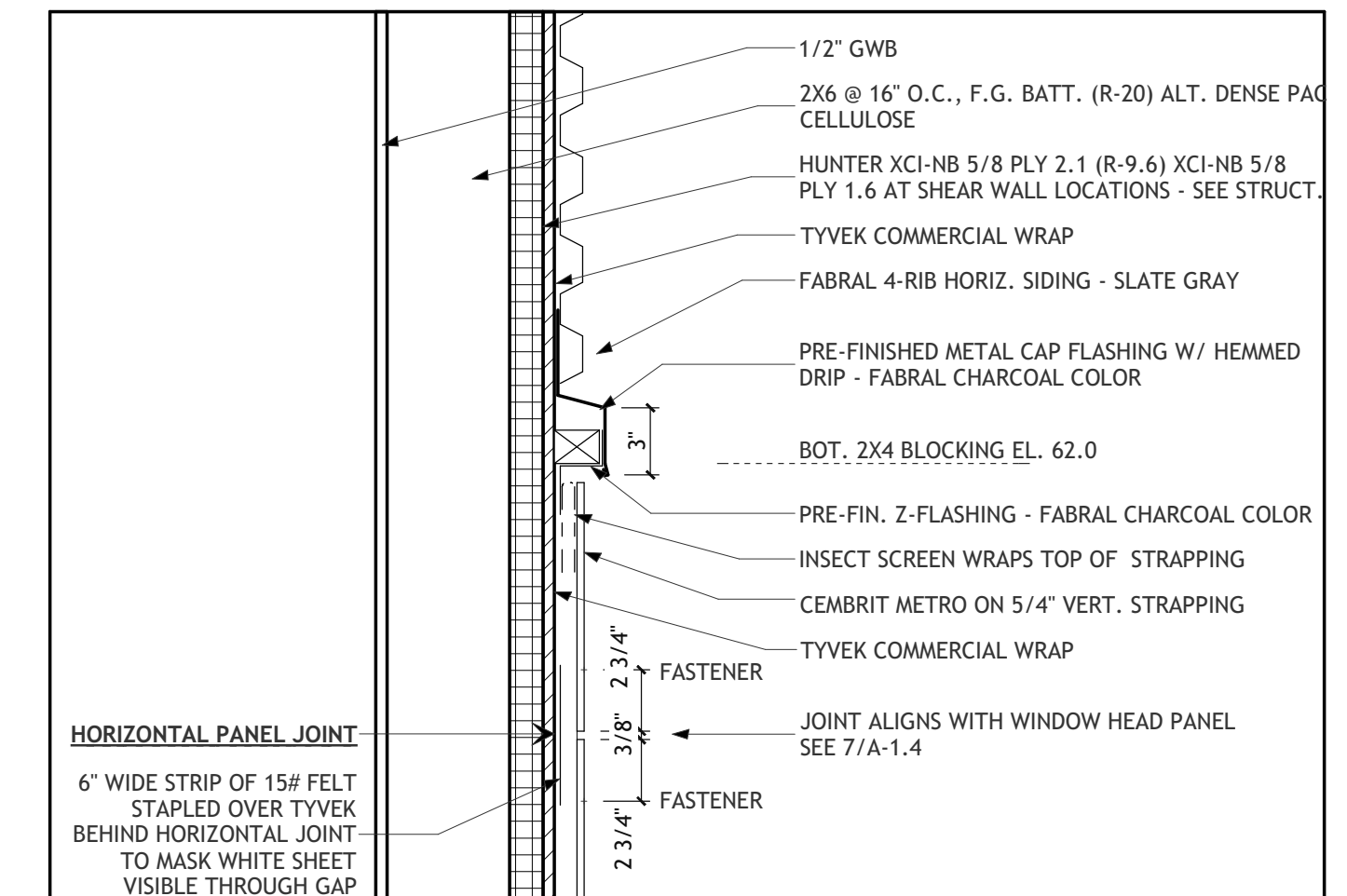
**Angle Corner @ Metal Siding**  
1 1/2" = 1'-0" **15**



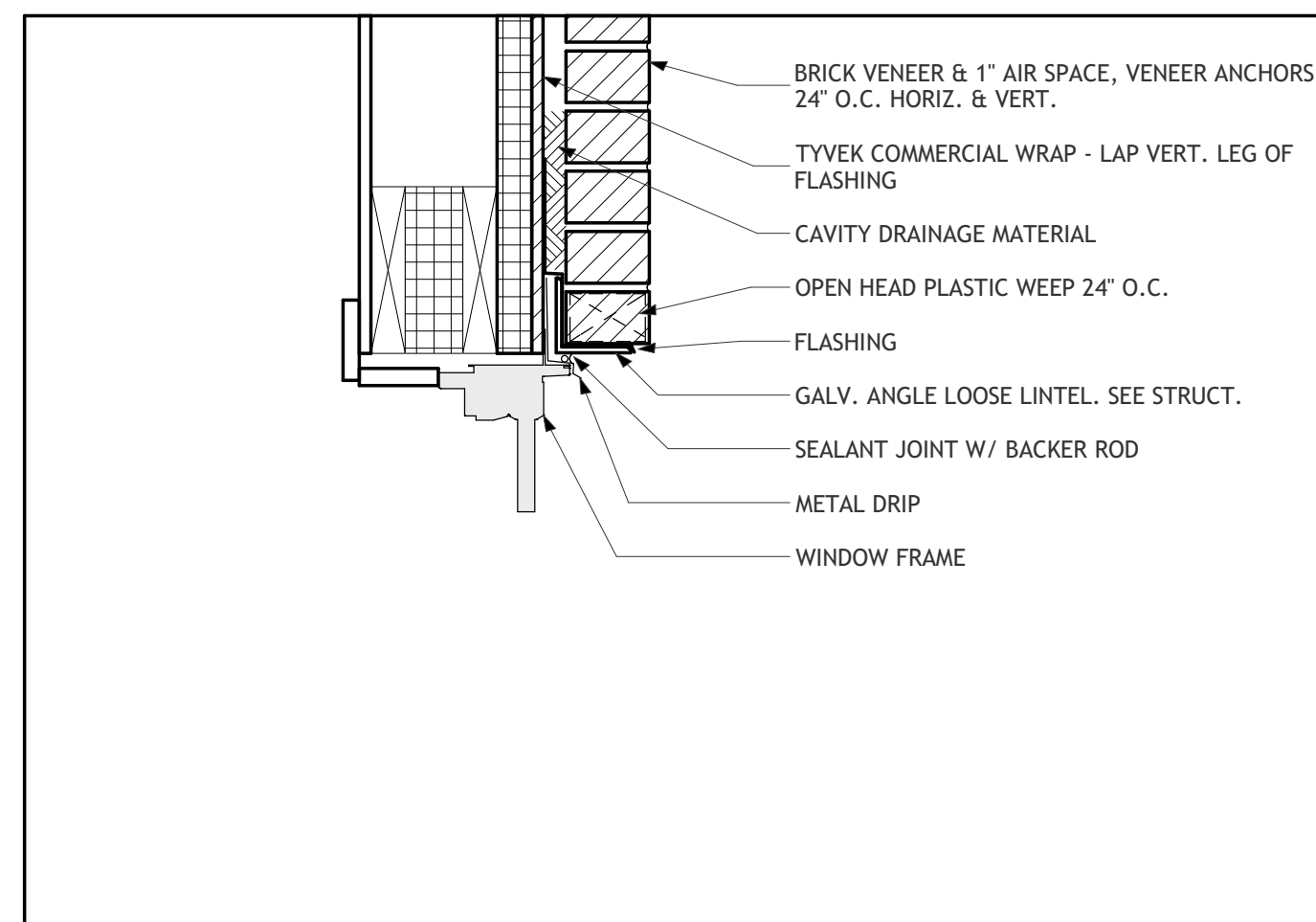
**Jamb at Panel & Vertical Joint**  
1 1/2" = 1'-0" **11**



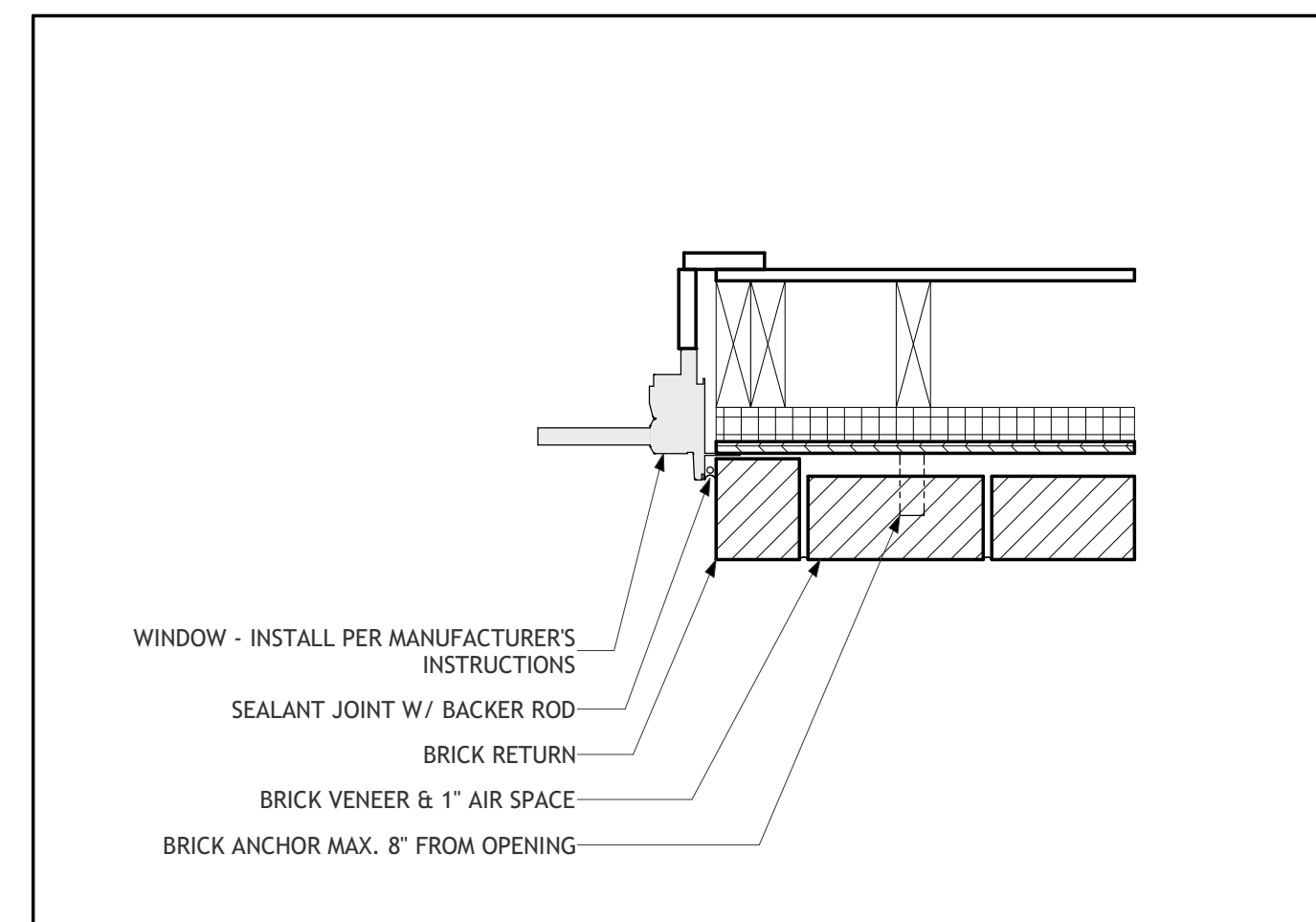
**Head at Panel Transition**  
1 1/2" = 1'-0" **7**



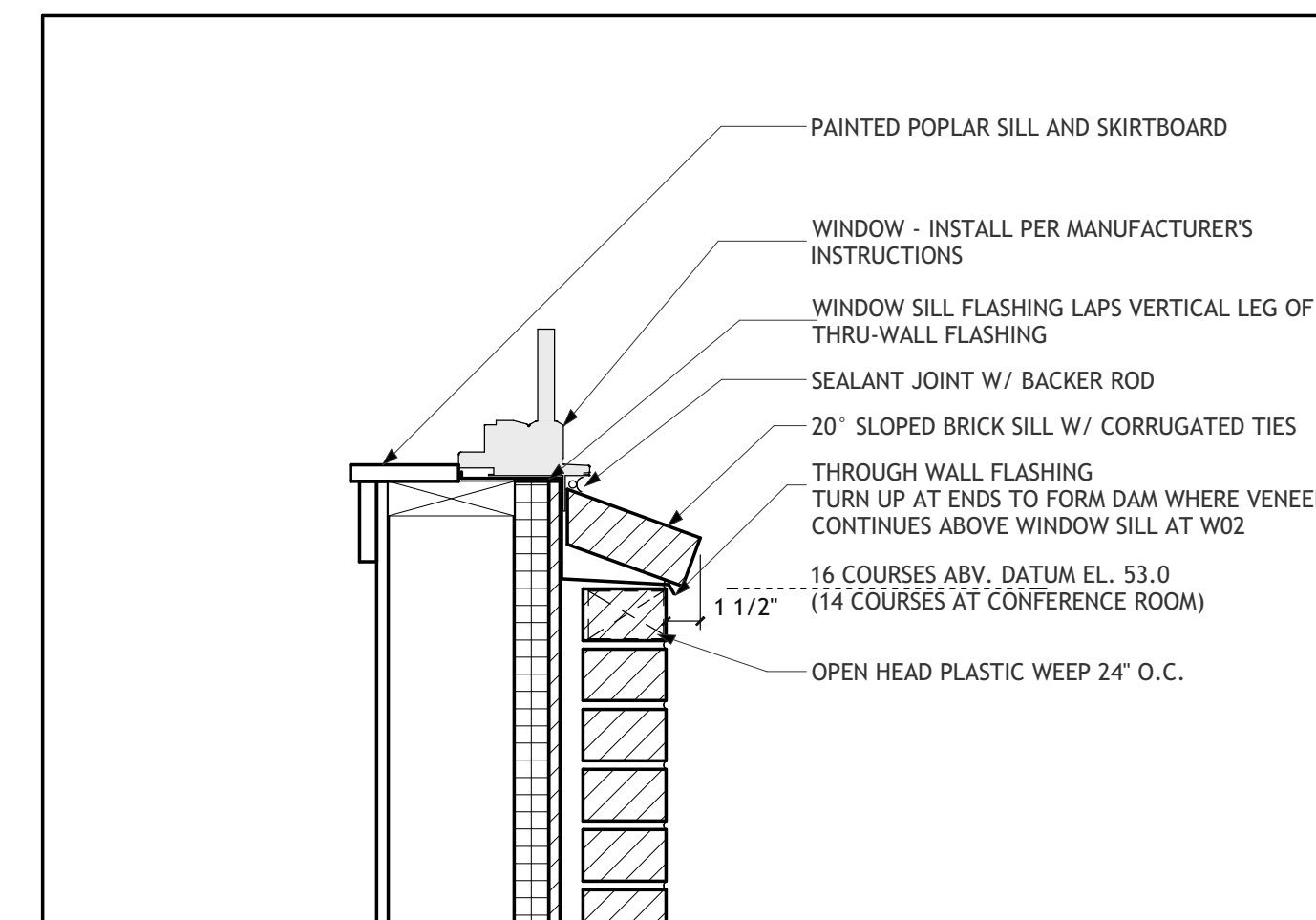
**Panel - Siding Transition & Horizontal Joint**  
1 1/2" = 1'-0" **3**



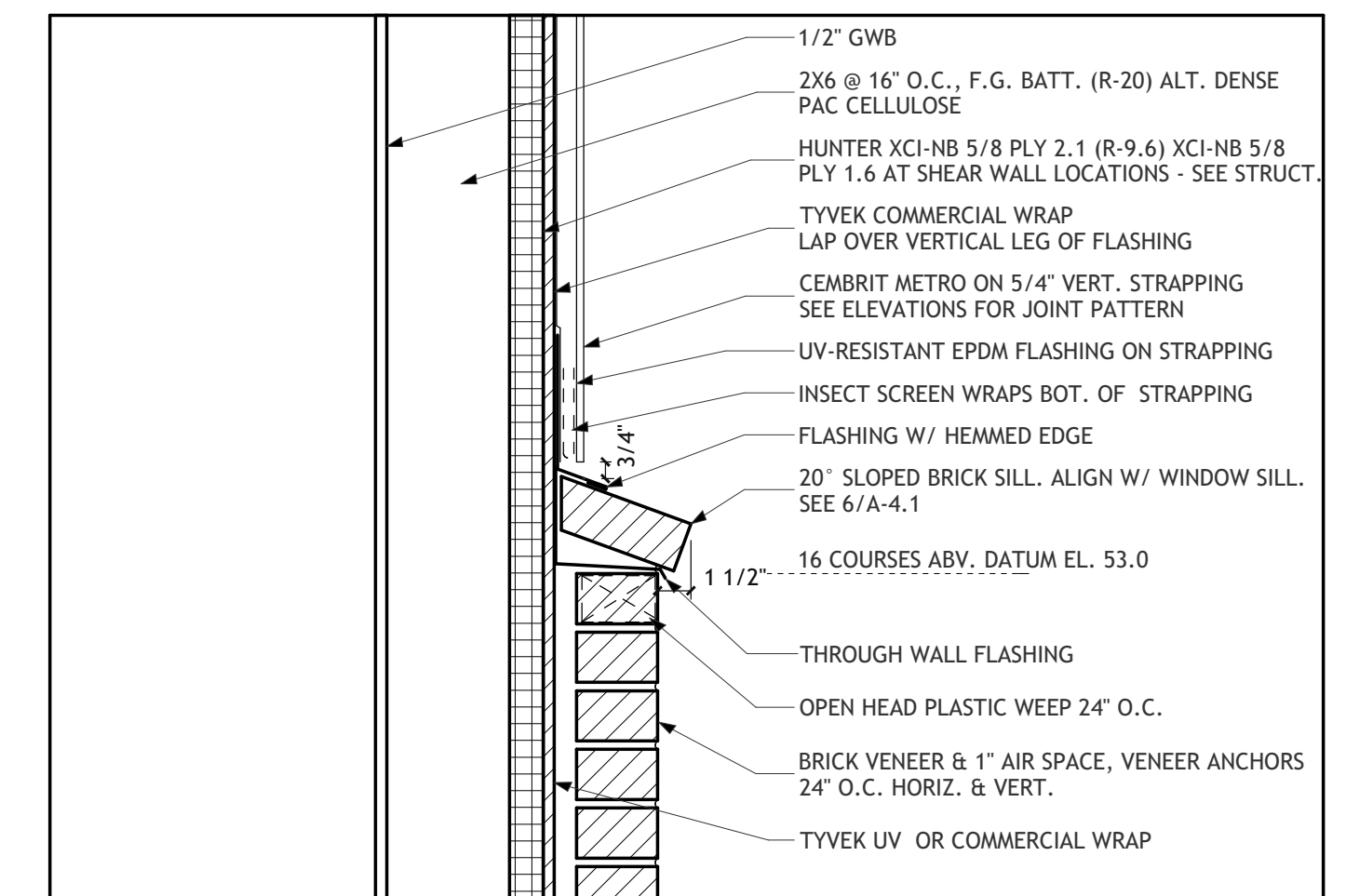
**Head @ Brick Veneer**  
1 1/2" = 1'-0" **14**



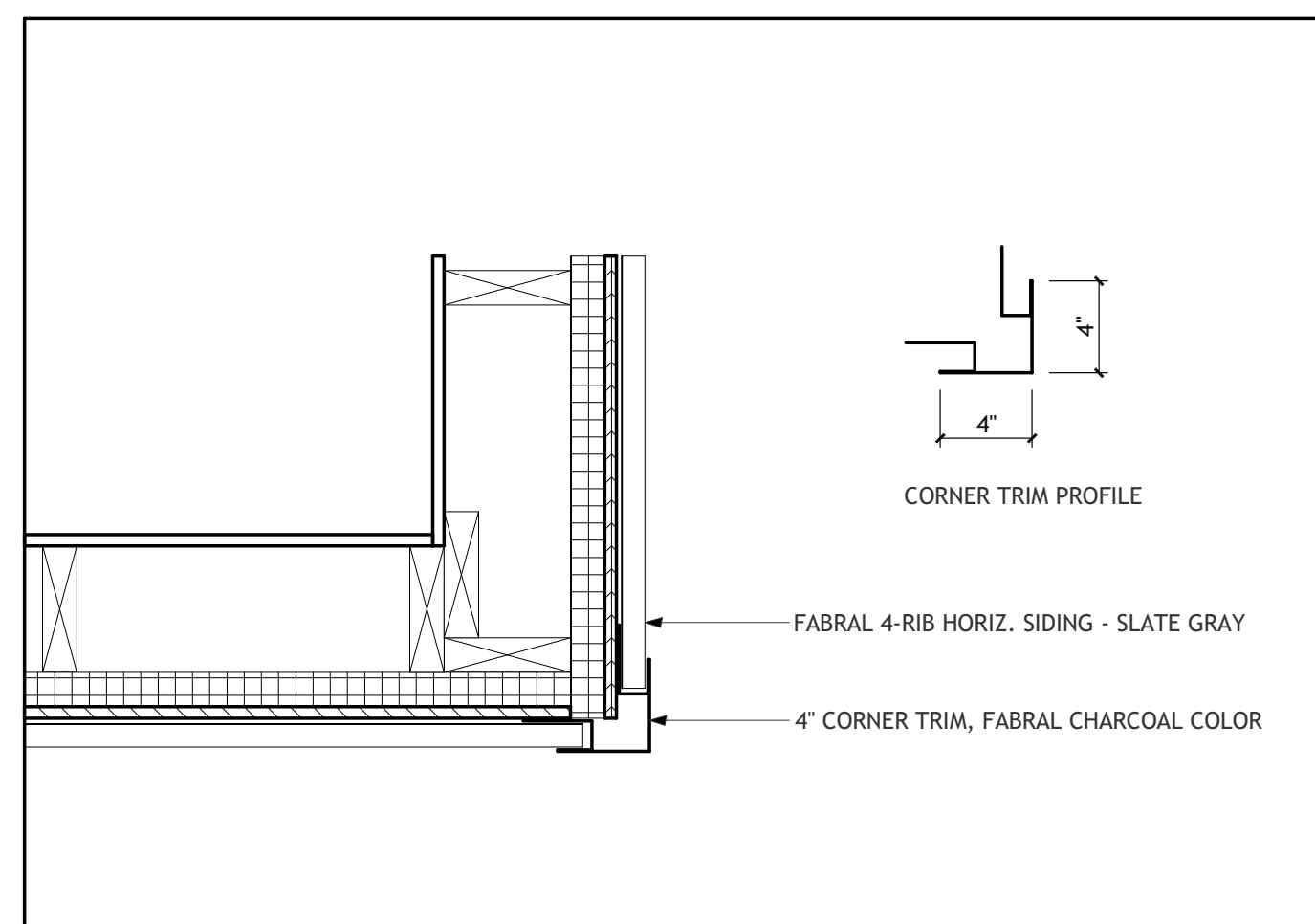
**Jamb at Brick Veneer**  
1 1/2" = 1'-0" **10**



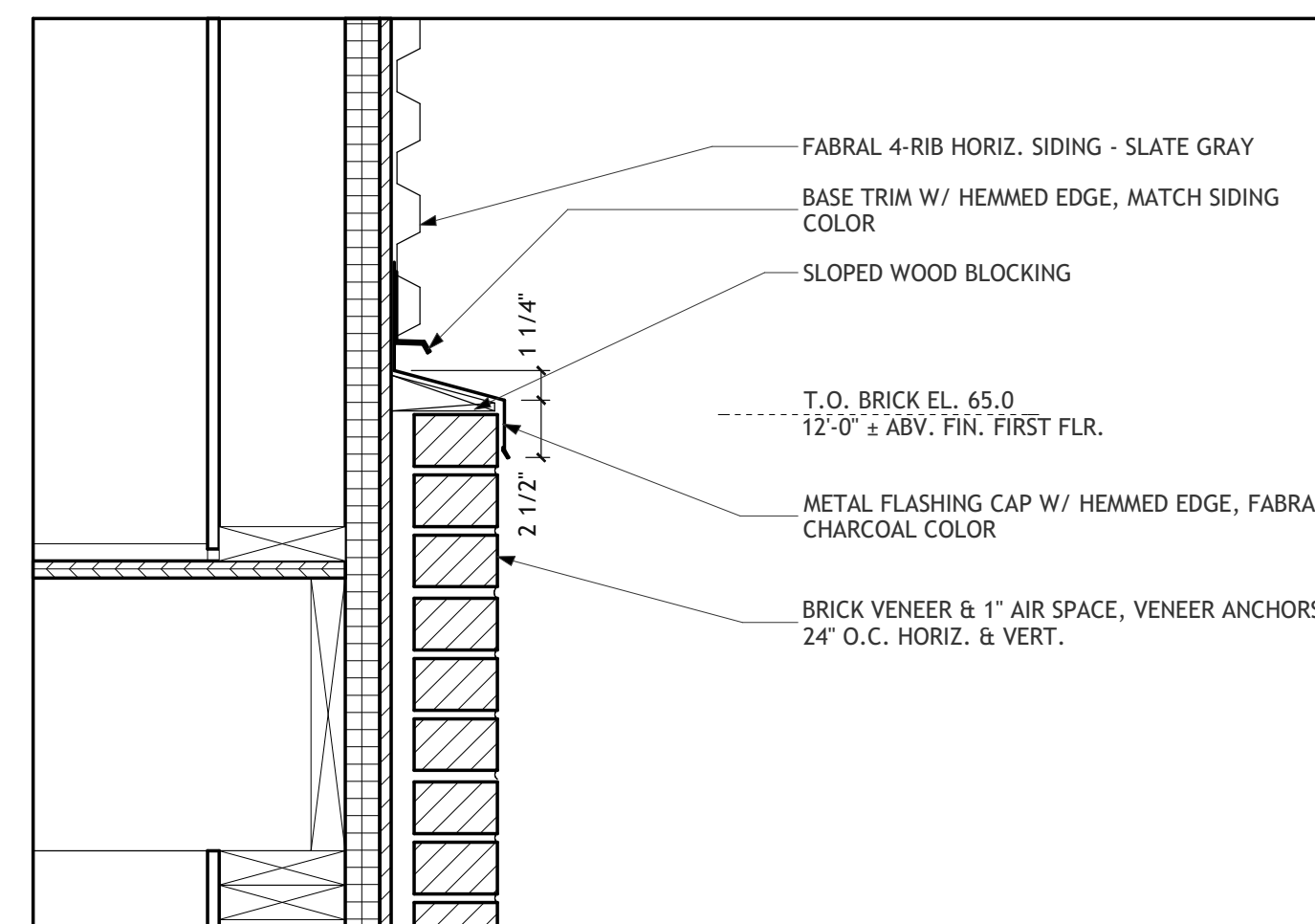
**Sill at Brick Transition**  
1 1/2" = 1'-0" **6**



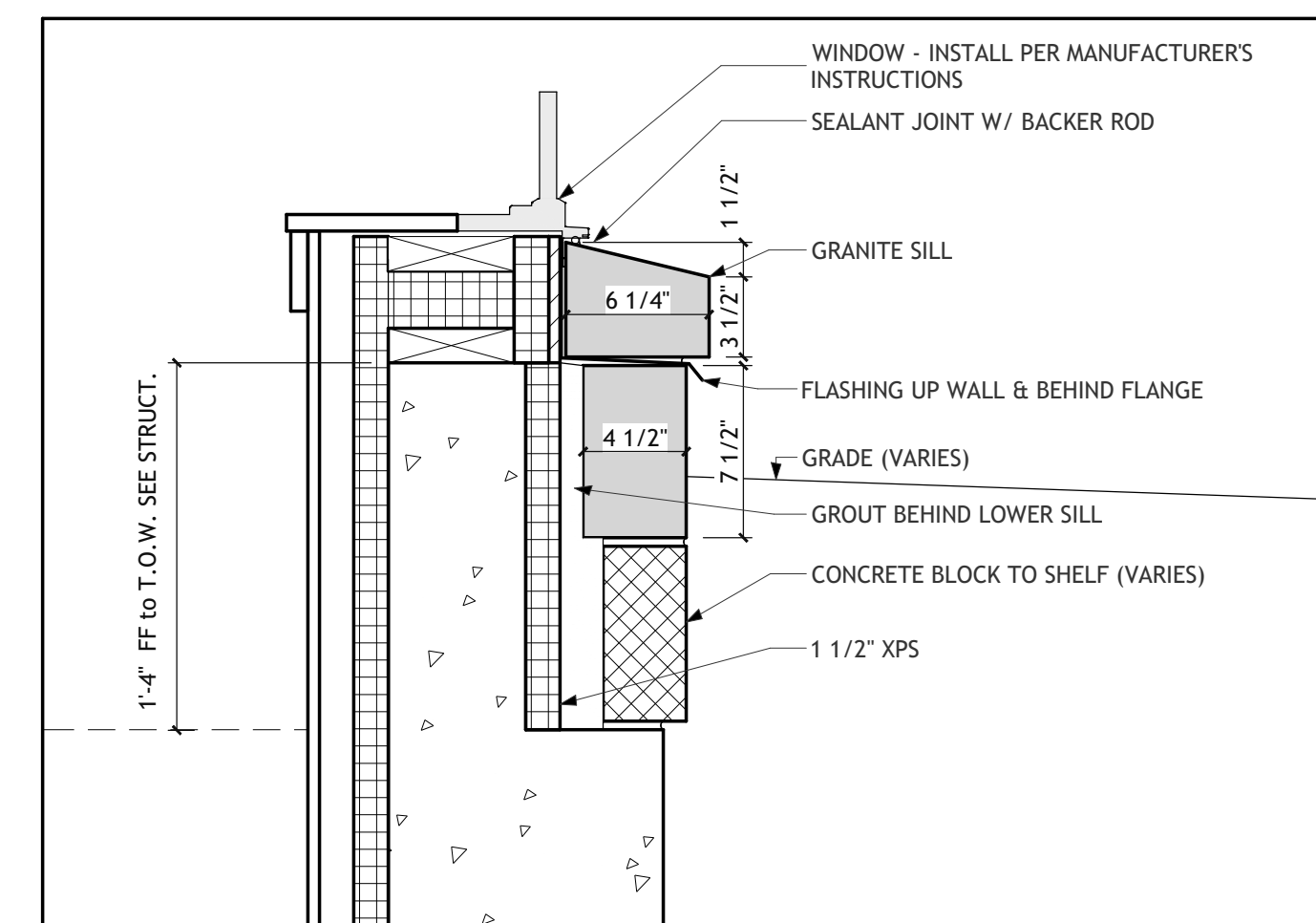
**Brick - Panel Transition**  
1 1/2" = 1'-0" **2**



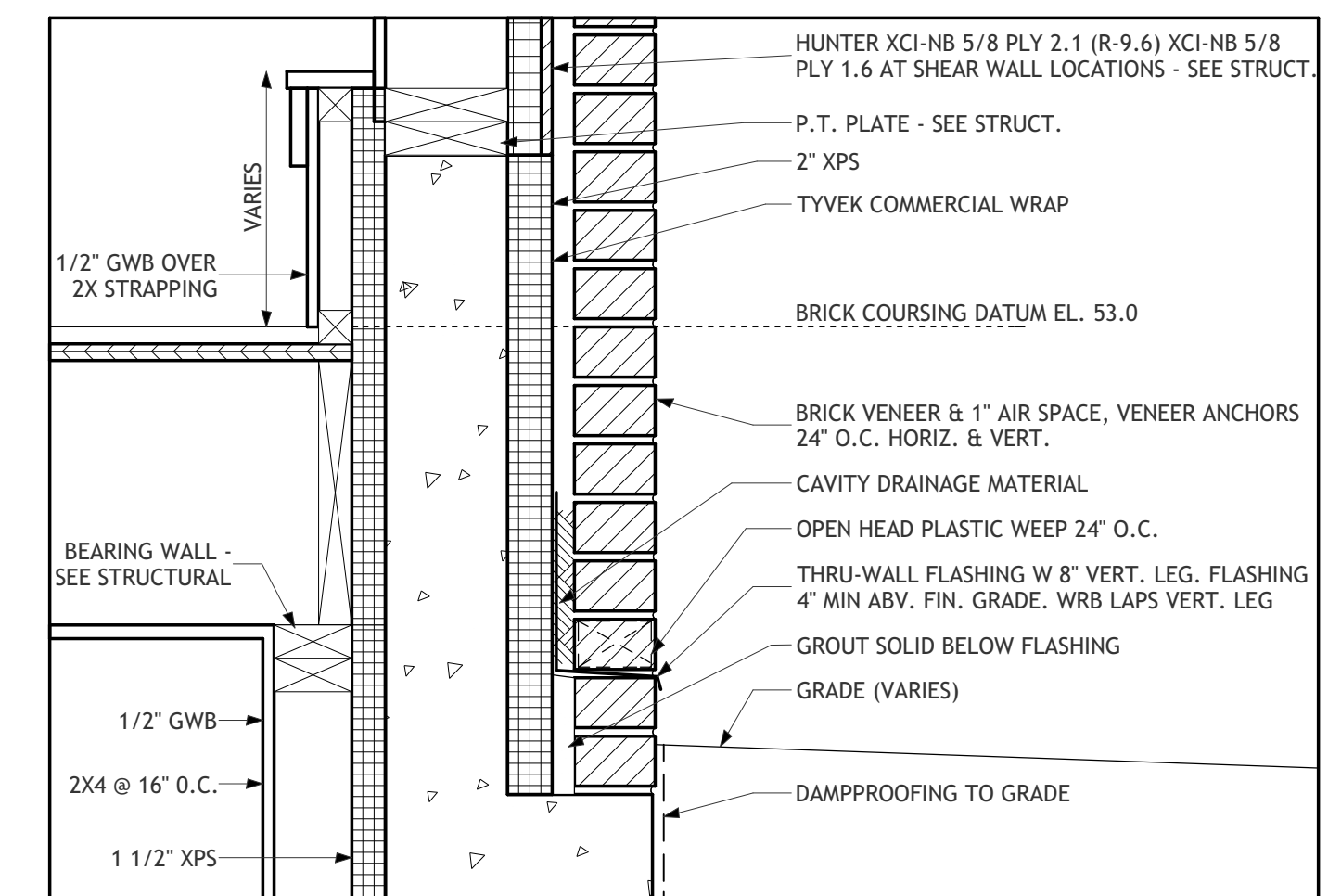
**Typ. Corner @ Metal Siding**  
1 1/2" = 1'-0" **13**



**Brick Veneer to Metal Siding Transition**  
1 1/2" = 1'-0" **9**



**W01 Sill**  
1 1/2" = 1'-0" **5**

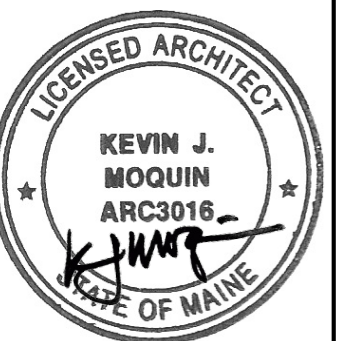


**Wall Base at Grade**  
1 1/2" = 1'-0" **1**

**Kevin Moquin Architect**  
Portland, ME  
Info@km-a.me  
(207)-615-6421

**23 Ocean**  
Portland, ME

PERMIT SET



Details

12/14/2016

**A-4.1**