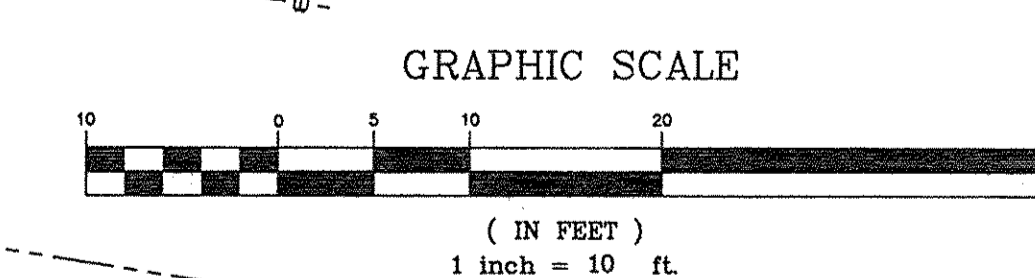
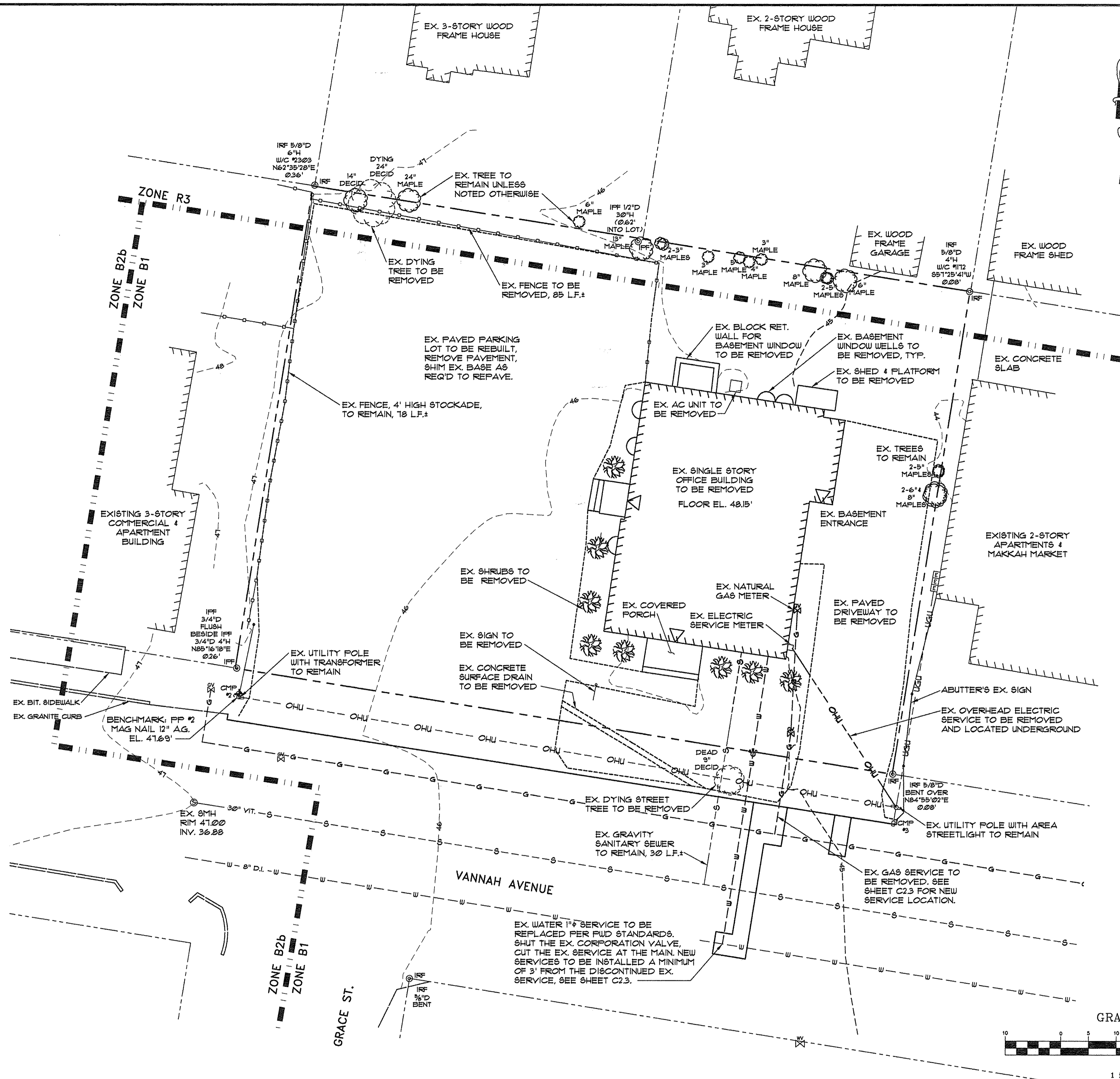


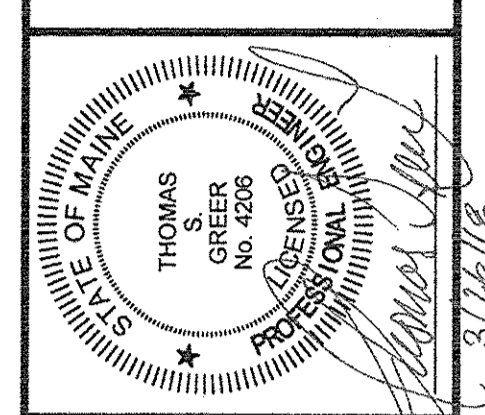
LEGEND

EXISTING

- PROPERTY LINE
- - - ABUTTERS PROPERTY
- - - ZONING DISTRICT
- - - EDGE OF PAVEMENT
- ==== CURB
- ▭ BUILDING
- UTILITY POLE
- UTILITY POLE W/ GUY WIRE
- SIGN
- TREE
- STOCKADE STYLE FENCE
- BENCHMARK
- BOUND FOUND
- IRON PIPE FOUND
- IRON ROD FOUND
- SEWER MANHOLE
- GATE VALVE
- GAS VALVE
- CONTOURS
- SPOT GRADE
- OHU
- OVERHEAD UTILITY
- WATER LINE
- GAS LINE
- TELEPHONE MANHOLE
- WATER DISTRICT MANHOLE
- SEWER MANHOLE
- UTILITY POLE
- UTILITY POLE W/ GUY WIRE
- SIGN



PINKHAM & GREER
CIVIL ENGINEERS
 28 VANUAH AVE. PORTLAND, ME. 04103
 TEL: 207.861.5542 FAX: 207.781.4295



REV.	DATE	DESCRIPTION
1	3/26/18	ADDED ADDITIONAL EXISTING UTILITY INFORMATION

VANUAH WHITE, INC.
 28 VANUAH AVENUE, PORTLAND, ME

SCALE: AS SHOWN
 DATE: MARCH 5, 2018
 PROJECT: 17166

DRN BY: JDC
 DESG BY: TSG
 CHK BY: [Signature]

THE 28 a condominium
 28 VANUAH AVENUE, PORTLAND, MAINE

**EXISTING CONDITIONS
 AND DEMOLITION PLAN**