

EXISTING SOIL:
 BUXTON SILT LOAM
 (PER SC6 MEDIUM
 INTENSITY SOILS MAP)

**CITY OF PORTLAND
 APPROVED SITE PLAN**
 Subject to Dept. Conditions
 Date of Approval: 9/22/05

Site Plan
 11 Bryant Street
 Portland, ME

1"=20'
 August 24, 2005
 Rev. Sept 1, 2005
 Mohr & Sereidin
 Landscape Architects, Inc.

Handwritten signature in blue ink.

1" COPPER WATERLINE -
SPLIT INTO 2 SERVICES
PL & PROVIDE SHUT-OFF.

NOTE: ALL UTILITY
SERVICES SHALL
CONFORM TO CITY OF
PORTLAND & UTILITY
COMPANY STANDARDS

REPAIR PAVEMENT
& CURBS PER
CITY OF PORTLAND
REQUIREMENTS

SIDEWALK
EXISTING UTILITY POLE IN
NEW SERVICE DROP

PERCY A. NORTHRUP
ANNIE MARGARET NORTHRUP
BK. 2373 P.198 C.C.R.D.

SEE SITE PLAN
FOR YARD DRAIN
& STORM DRAIN INFO

GAS & ELECTRIC METERS
ON BUOG

TWO OTHER IRON PIPES WERE FOUND NEXT
TO THE IRON ROD. IRON ROD WAS HELD AS THE

N/F
PALMER PETERS ET. AL.
BK. 17522 P.277 C.C.R.D.

CONNECT FOOTING
DRAIN TO YARD
DRAIN

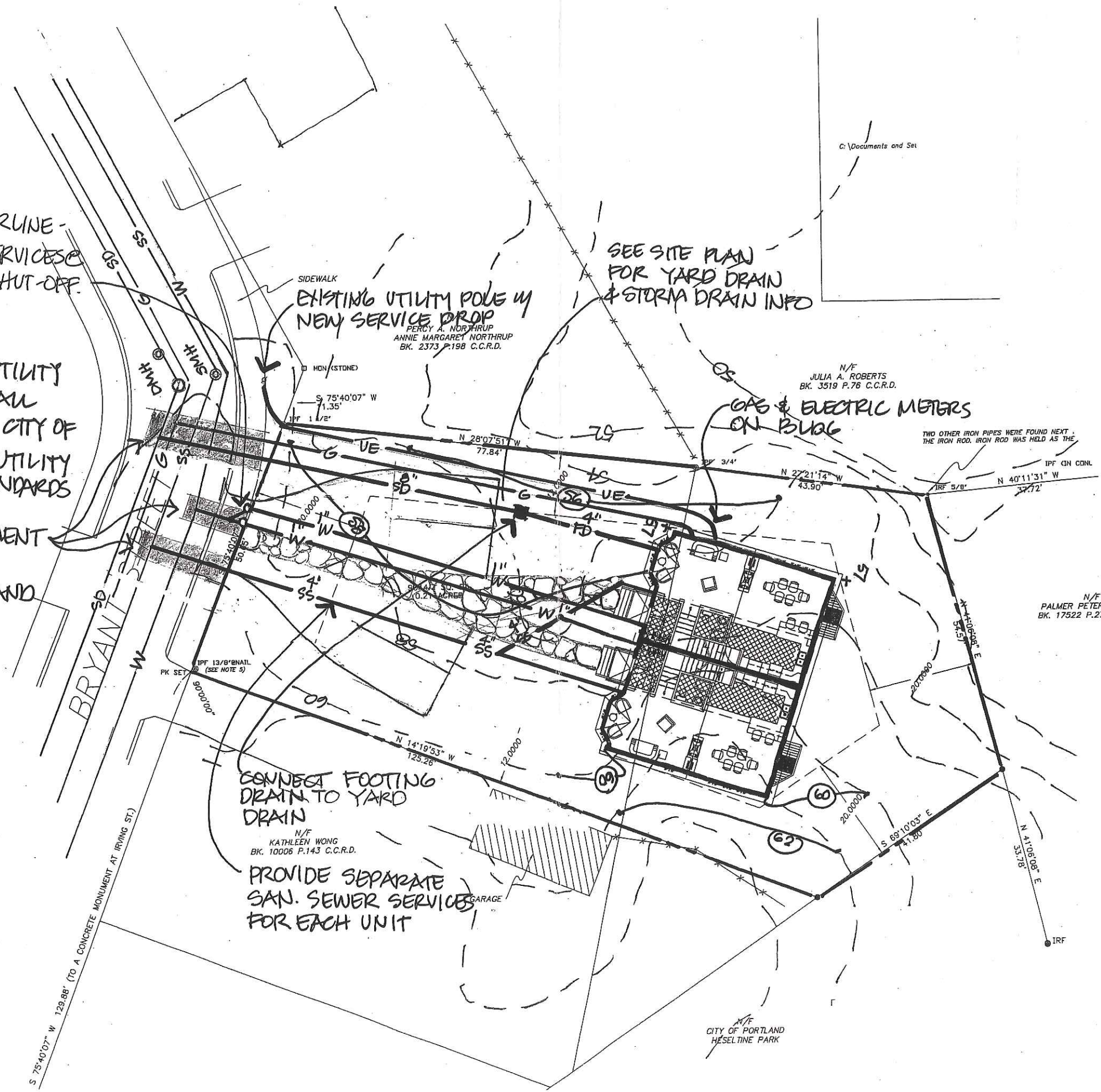
N/F
KATHLEEN WONG
BK. 10006 P.143 C.C.R.D.

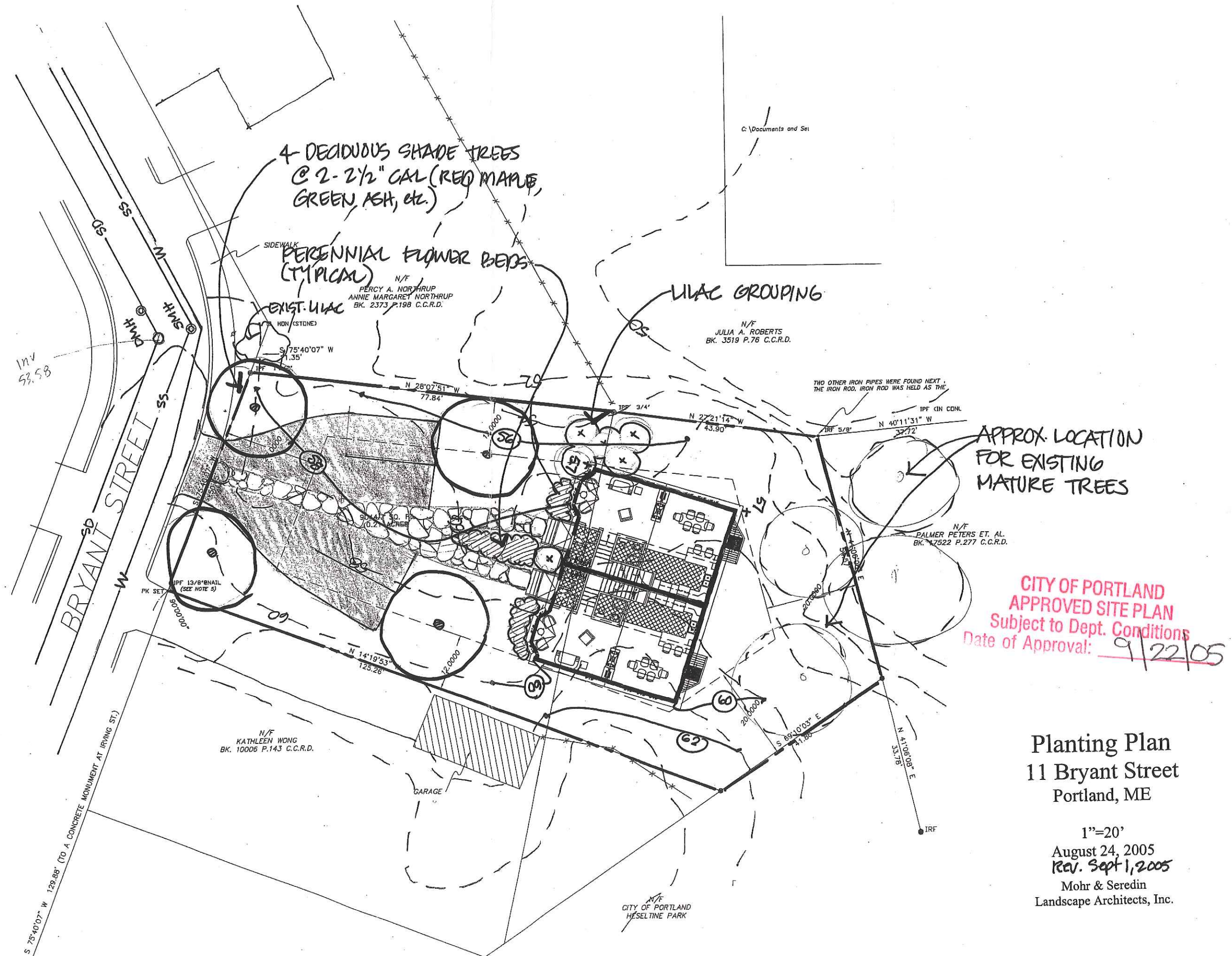
PROVIDE SEPARATE
SAN. SEWER SERVICES
FOR EACH UNIT

CITY OF PORTLAND
APPROVED SITE PLAN
Subject to Dept. Conditions
Date of Approval: 9/22/05

Utilities Plan
11 Bryant Street
Portland, ME

1"=20'
August 24, 2005
Rev. Sept 1, 2005
Mohr & Seredin
Landscape Architects, Inc.





C:\Documents and Set

4 DECIDUOUS SHADE TREES
@ 2-2 1/2" CAL (RED MAPLE,
GREEN ASH, etc.)

PERENNIAL FLOWER BEDS
(TYPICAL)

LILAC GROUPING

EXIST. LIAC

N/F
PERCY A. NORTHRUP
ANNIE MARGARET NORTHRUP
BK. 2373 P.198 C.C.R.D.

N/F
JULIA A. ROBERTS
BK. 3519 P.76 C.C.R.D.

TWO OTHER IRON PIPES WERE FOUND NEXT
TO THE IRON ROD. IRON ROD WAS HELD AS THE

APPROX. LOCATION
FOR EXISTING
MATURE TREES

N/F
PALMER PETERS ET. AL.
BK. 17522 P.277 C.C.R.D.

CITY OF PORTLAND
APPROVED SITE PLAN
Subject to Dept. Conditions
Date of Approval: 9/22/05

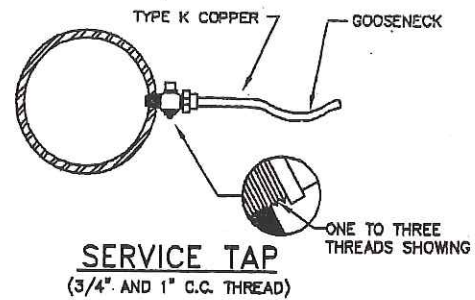
N/F
KATHLEEN WONG
BK. 10005 P.143 C.C.R.D.

GARAGE

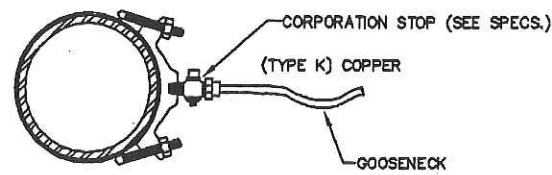
N/F
CITY OF PORTLAND
HESELTINE PARK

Planting Plan
11 Bryant Street
Portland, ME

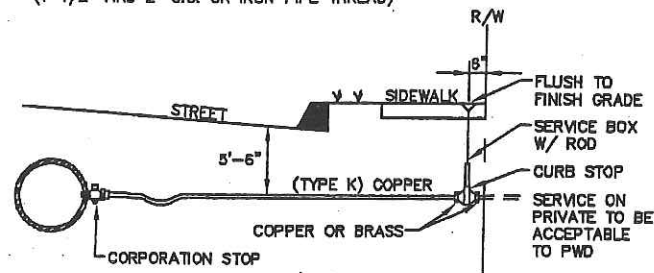
1"=20'
August 24, 2005
Rev. Sept 1, 2005
Mohr & Seredin
Landscape Architects, Inc.



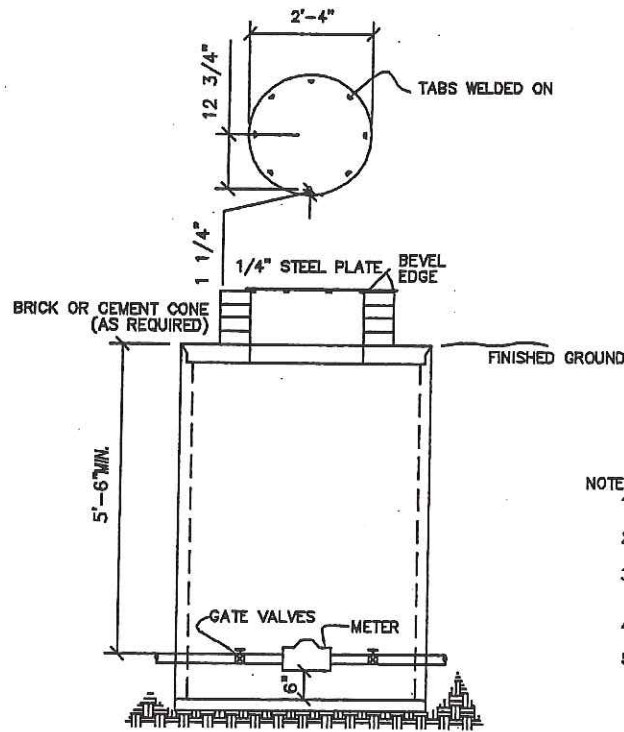
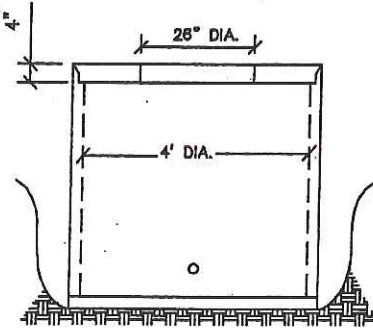
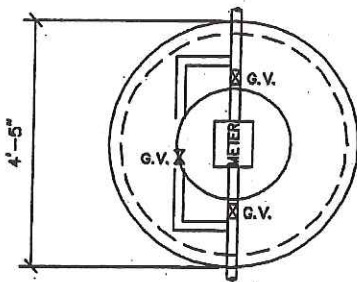
SERVICE TAP
(3/4\"/>



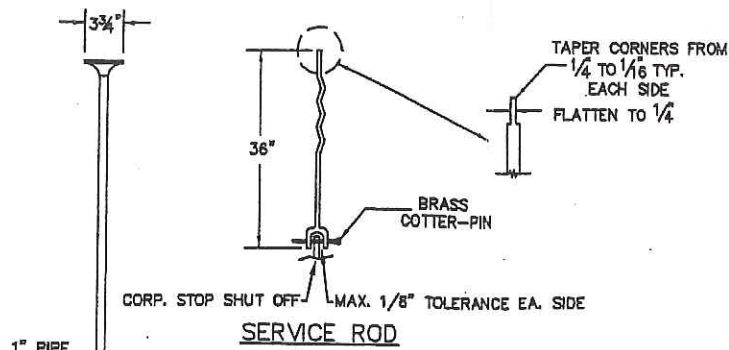
SERVICE SADDLE
(1-1/2\"/>



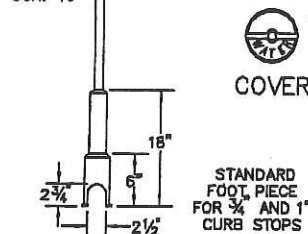
TYPICAL SERVICE CONNECTION



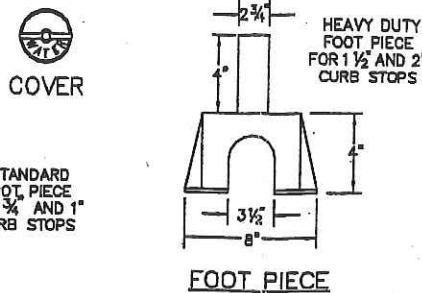
TYPICAL METER PIT



SERVICE ROD

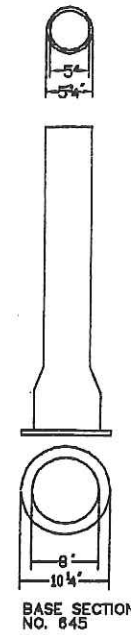


SERVICE BOX

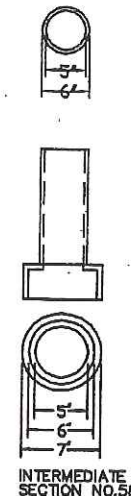


FOOT PIECE

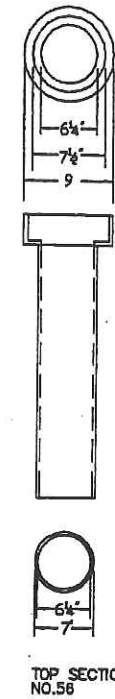
NOTE: ANY EXTENSION OF SERVICE BOX REQUIRES A COUPLING & 1\"/>



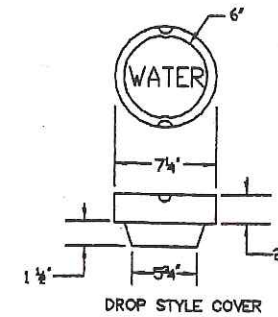
BASE SECTION
NO. 845



INTERMEDIATE SECTION
NO. 58



TOP SECTION
NO. 58



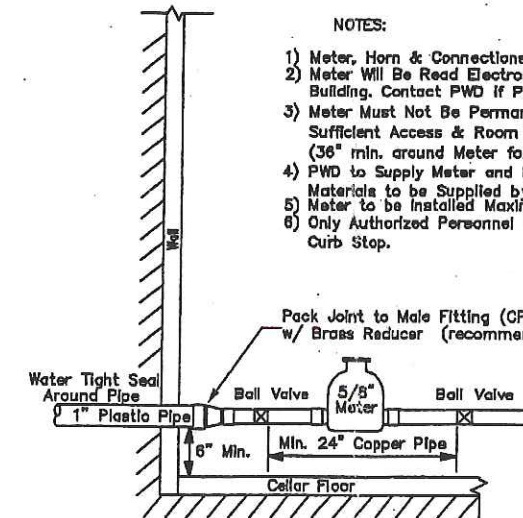
DROP STYLE COVER

(NUMBERS ARE FOR 5 1/4\"/>

VALVE BOX & COVER

- 5/8\"/>**
- METER BOX**
 - TO BE INSTALLED AND SUPPLIED BY OWNER
 - MINIMUM 4'-0\"/>
 - WATER METER TO HAVE 5'-6\"/>
 - OWNER IS TO SUPPLY 2 VALVES INSIDE OF PIT (MINIMUM SEPARATION OF 2'-0\"/>
 - COPPER PIPE REQUIRED THRU METER PIT
 - 1.5\"/>
 - COVER PLATE**
 - COVER MUST WEIGH LESS THAN 60 lbs.
 - MINIMUM SIZE OF COVER WILL BE 28\"/>
 - IF STEEL PLATE IS USED, TREAT WITH A COAT OF RUST INHIBITOR PAINT.

- NOTES**
- THIS PIT IS TO BE PLACED ON PRIVATE PROPERTY NEAR THE STREET LINE.
 - THIS TYPICAL PIT WAS NOT DESIGNED FOR ANY TRAFFIC LOAD
 - THE PIT CAN BE ORDERED THRU OTHERS WITH SPECIAL DETAILS SUCH AS LARGER M.H. COVERS, ETC.
 - THIS PIT WILL HOUSE UP TO TWO 5/8\", 3/4\", OR 1\"/>
 - NO BACKFLOWS ALLOWED IN PIT (PER STATE REGULATION)



TYP. HORIZONTAL METER SET

- NOTES:**
- Meter, Horn & Connections Installed by PWD
 - Meter Will Be Read Electronically From Outside of Building. Contact PWD if Pre-Wiring is Required.
 - Meter Must Not Be Permanently "Boxed" Without Sufficient Access & Room For Future Servicing (36\"/>
 - PWD to Supply Meter and Meter Horn. All Other Materials to be Supplied by Homeowner.
 - Meter to be Installed Maximum 18\"/>
 - Only Authorized Personnel Shall Operate Service Curb Stop.

CITY OF PORTLAND
APPROVED SITE PLAN
Subject to Dept. Conditions
Date of Approval: 10/22/05



11 Bryant Street
Portland, ME

Sept 1, 2005

SECTION II — SANITARY SEWER AND STORM DRAIN DESIGN STANDARDS

NOTE: LOCATION/WARNING TAPE SHALL BE INSTALLED OVER CENTERLINE OF PIPE AT A MAXIMUM OF 24 INCHES BELOW FINISH GRADE.

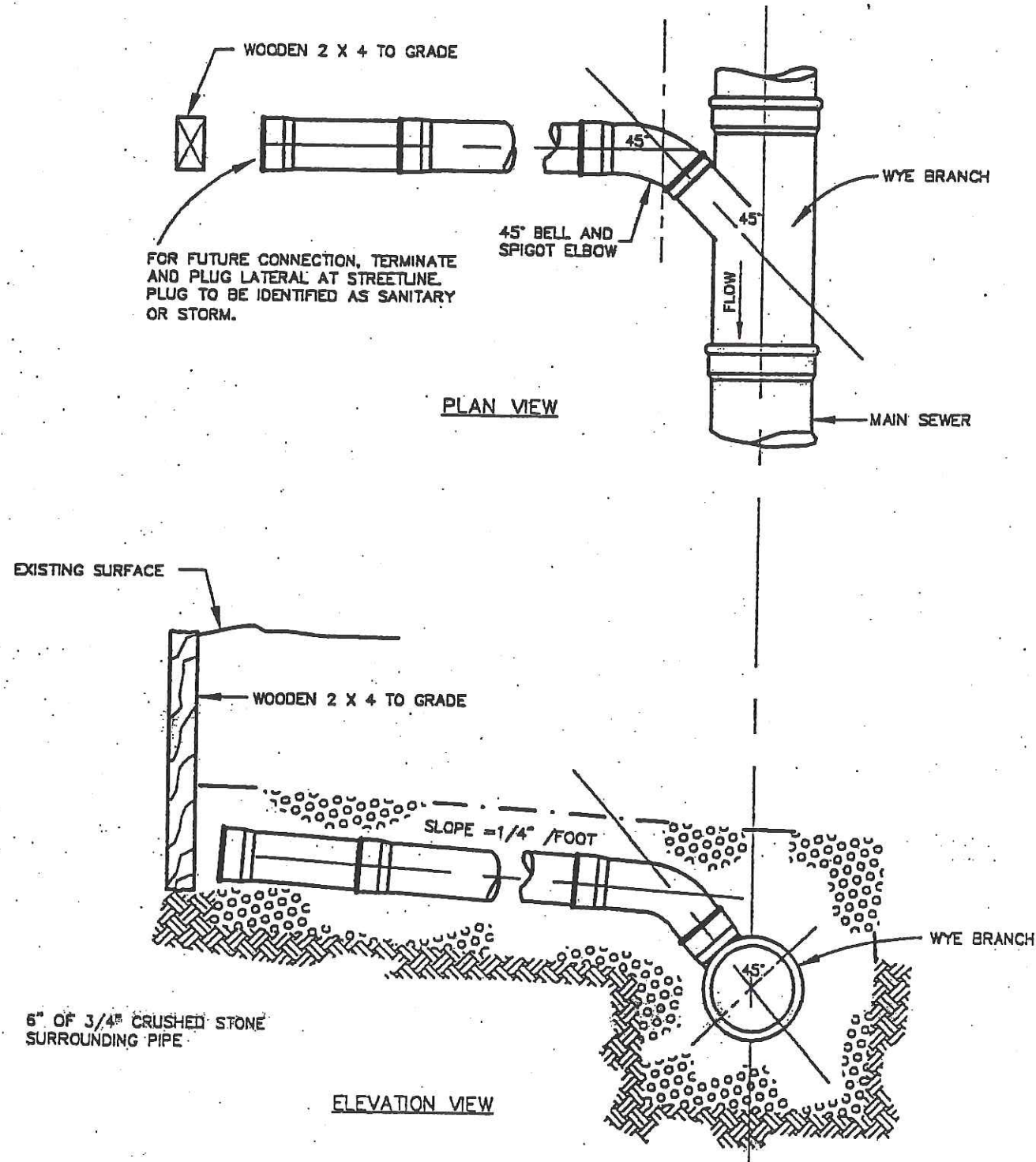


FIGURE II - 19
TYPICAL HOUSE LATERAL WYE CONNECTION DETAIL

SECTION II — SANITARY SEWER AND STORM DRAIN DESIGN STANDARDS

1. LOCATIONS AND ELEVATIONS OF STUBS SHOWN ON THE PLANS ARE TO BE CONSIDERED AS APPROXIMATE AND MAY BE ADJUSTED AS DIRECTED TO SUIT FIELD CONDITIONS.
2. HOUSE CONNECTIONS AND CATCH BASIN CONNECTIONS TO THE MAIN LINE OF THE SEWER SHALL CONSIST OF AN APPROPRIATE "Y" BRANCH CONNECTION AS SHOWN ON THE PLANS, OR AS DIRECTED. ACTUAL "Y" LOCATIONS FOR HOUSE CONNECTIONS AND CATCH BASIN CONNECTIONS SHALL BE DETERMINED DURING CONSTRUCTION. THE CONTRACTOR SHALL KEEP A COMPLETE RECORD OF "Y" LOCATIONS WHICH SHALL BE GIVEN TO THE CITY OF PORTLAND UPON COMPLETION OF THE CONTRACT.

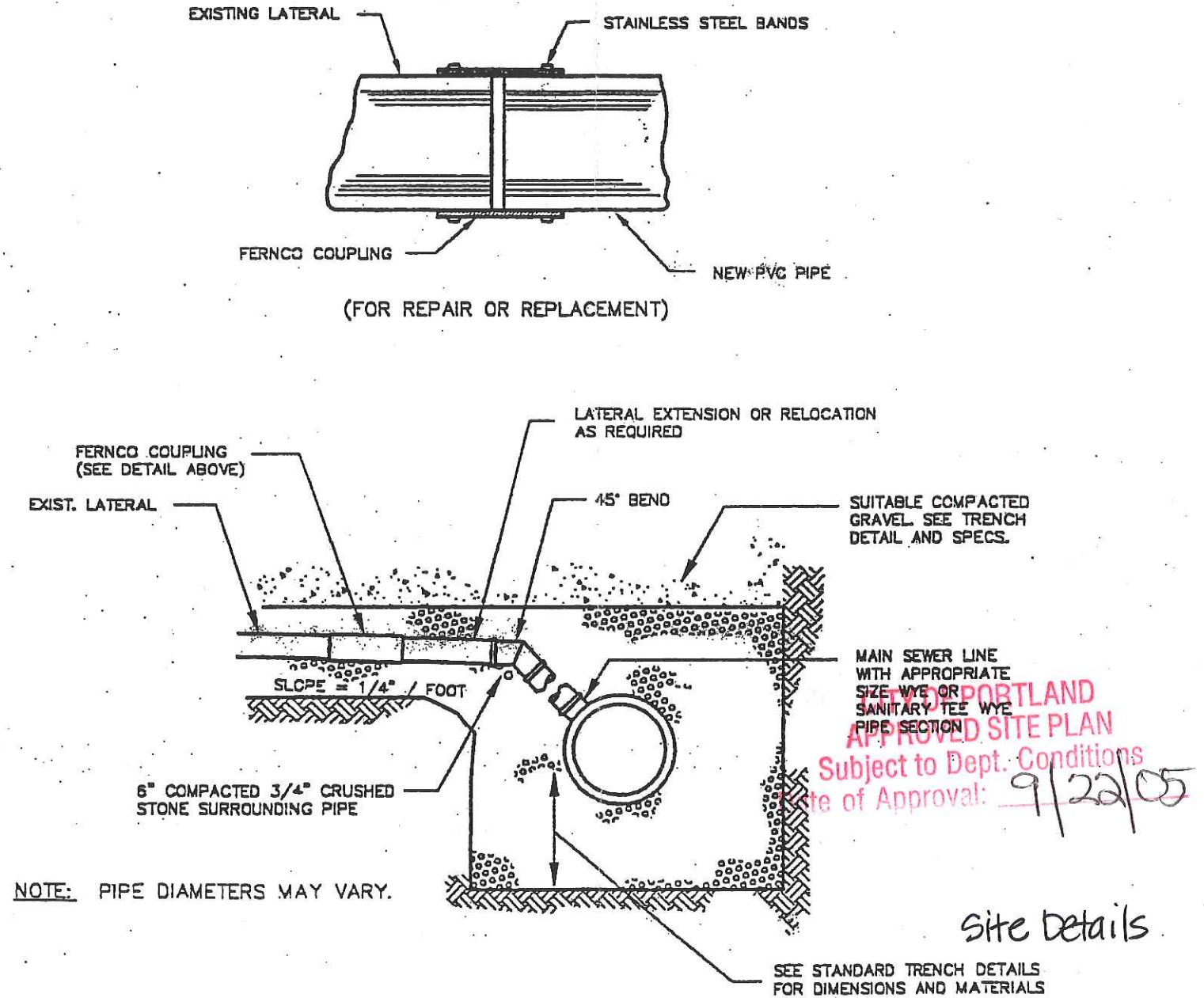


FIGURE II - 18
TYPICAL EXISTING LATERAL CONNECTION DETAIL

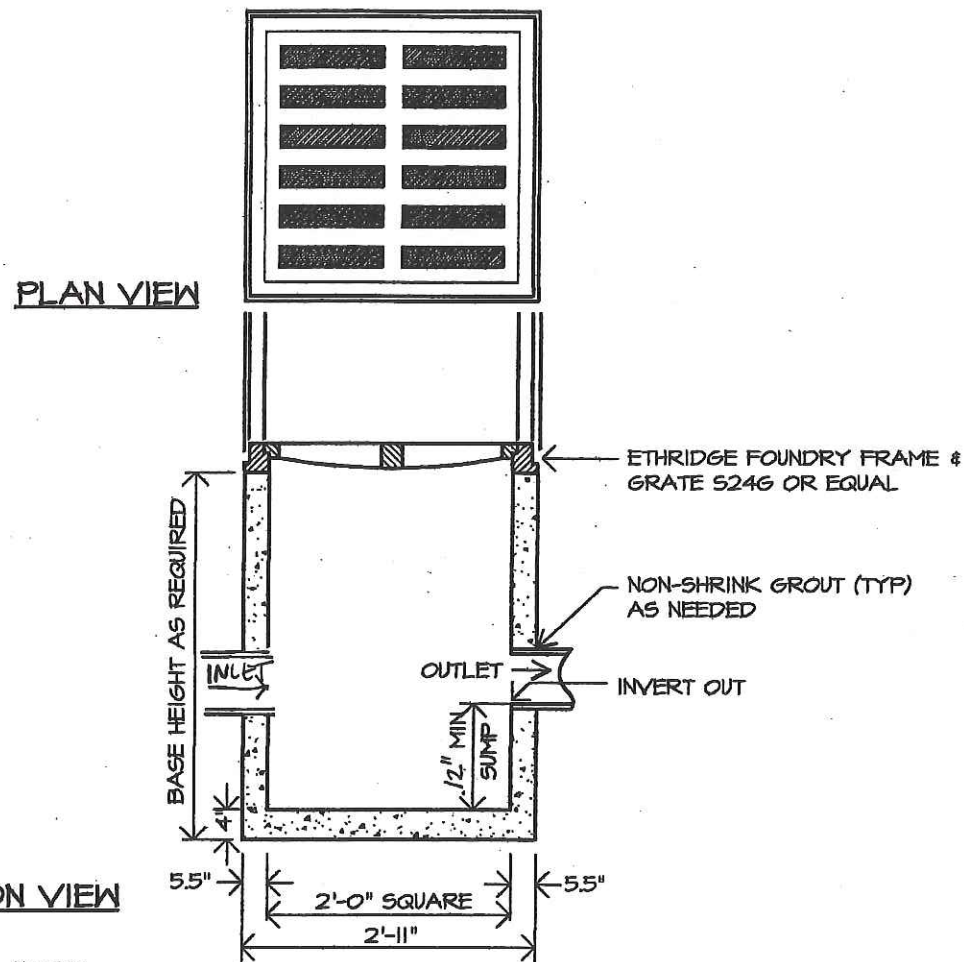
APPROVED SITE PLAN
Subject to Dept. Conditions
Date of Approval: 9/22/05

Site Details

11 Bryant Street
Portland, ME

Sept 1, 2005

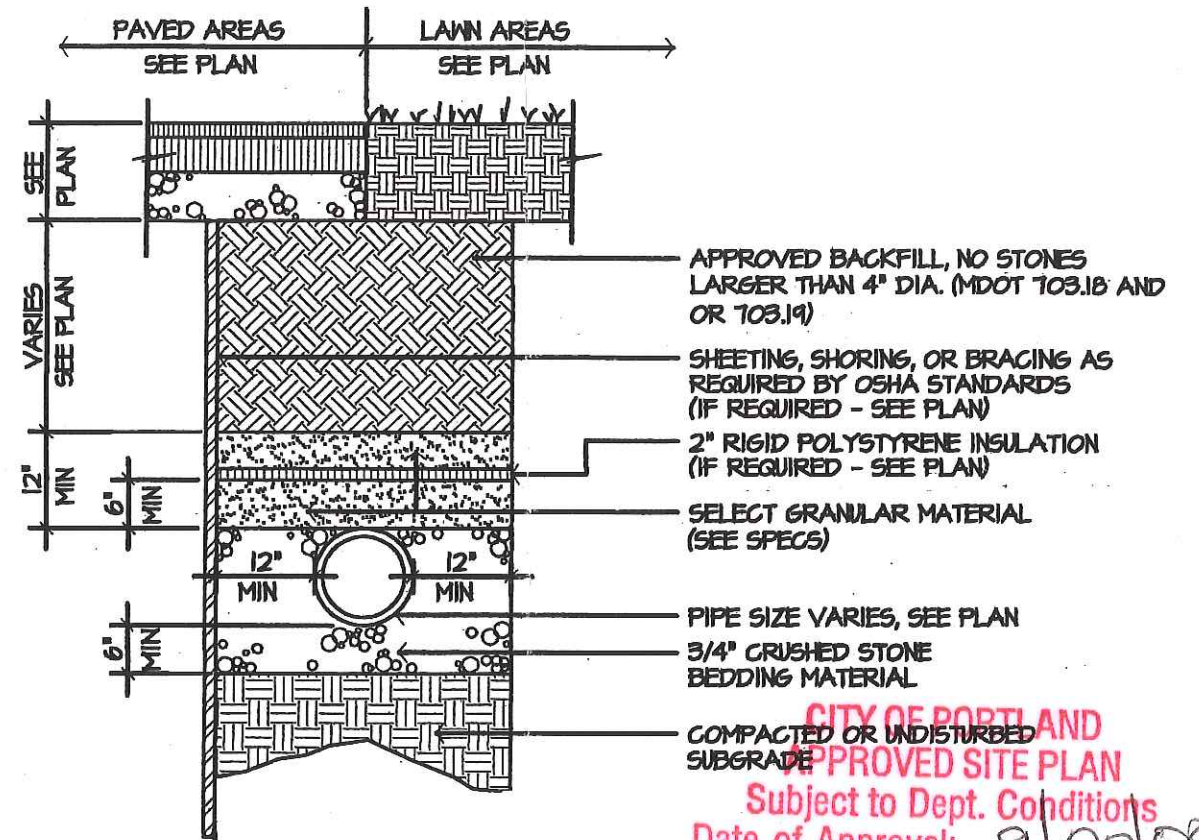
Mohr & Seredin
Landscape Architects, Inc.



SECTION VIEW

- NOTES:
1. CONCRETE 5000 PSI AFTER 28 DAYS.
 2. REINFORCING: 1 LAYER 4x4 / 4x4 W/M.
 3. FIELD INLET IS USED FOR SHALLOW, OFF-DRIVE, DEAD END DRAINAGE AREAS.

FIELD INLET
N.T.S.



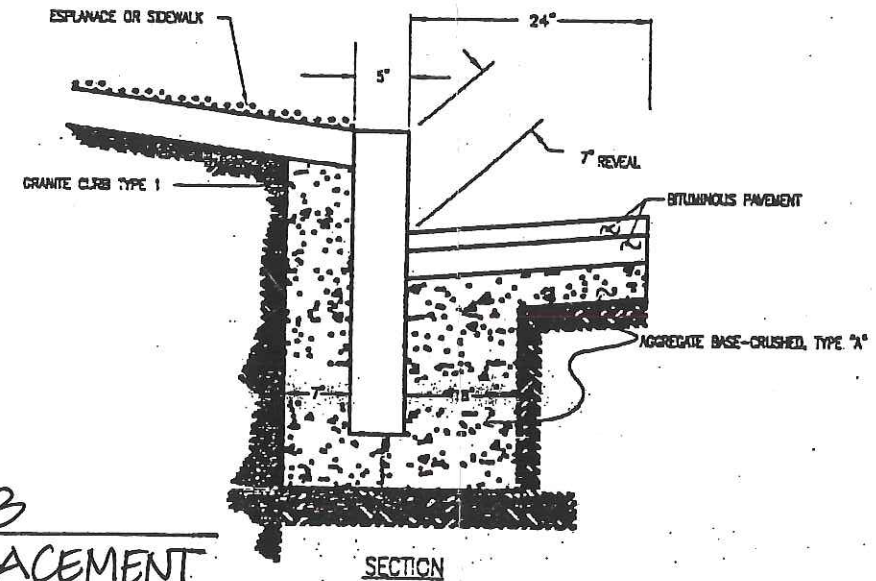
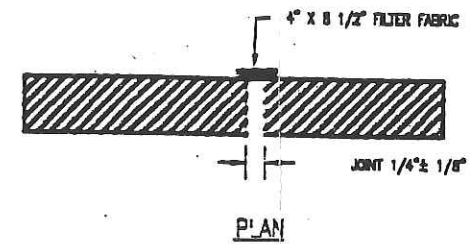
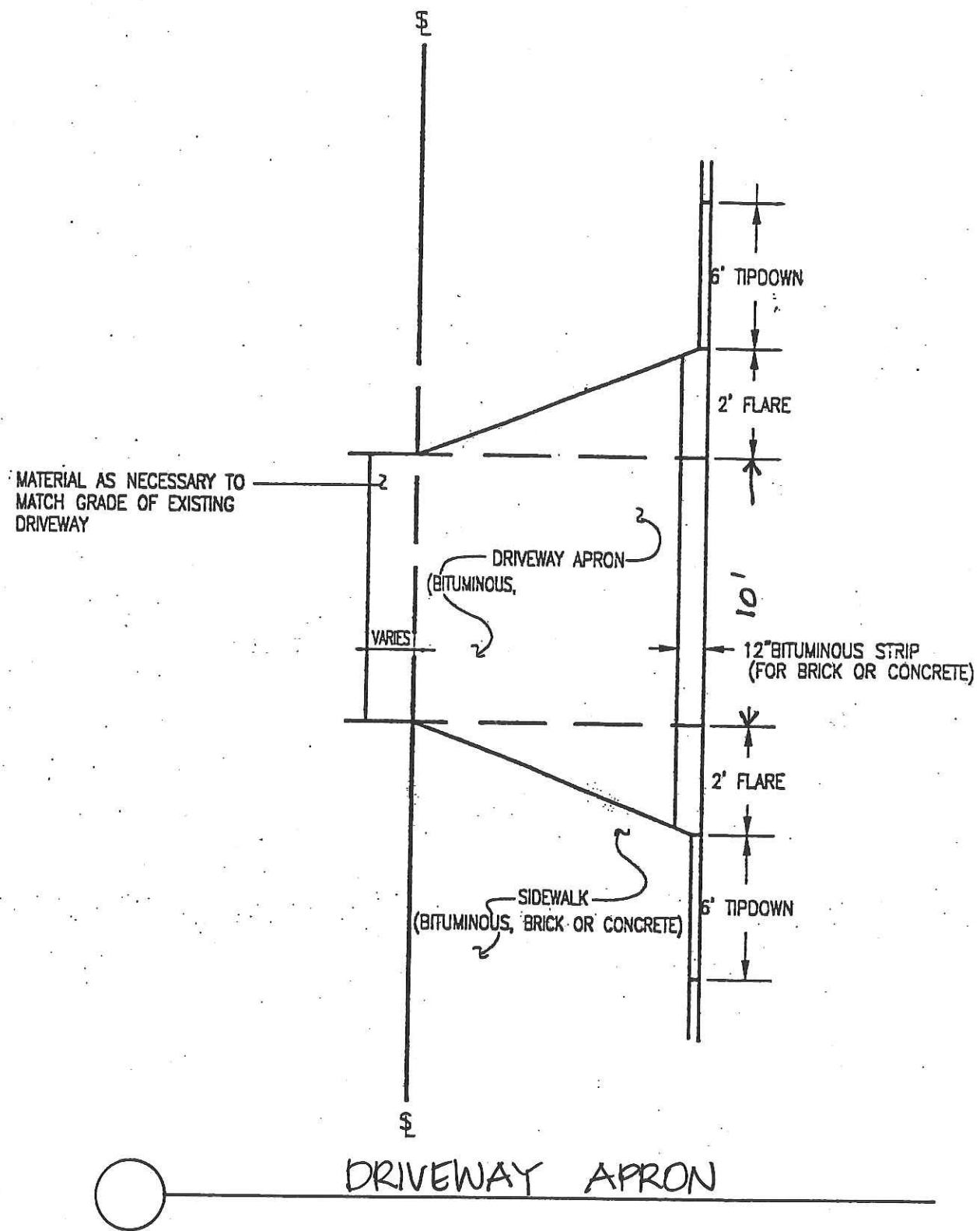
PIPE BEDDING
NOT TO SCALE

CITY OF PORTLAND
APPROVED SITE PLAN
Subject to Dept. Conditions
Date of Approval: 9/22/05

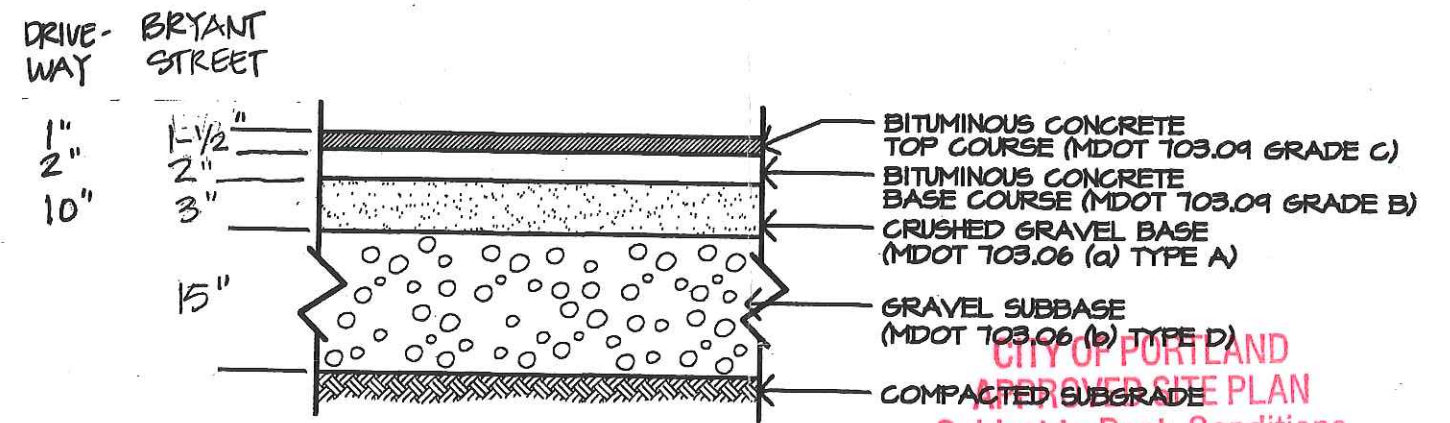
Site details
11 Bryant Street
Portland, ME

Sept. 1, 2005

Mohr & Seredin
Landscape Architects, Inc.



CURB REPLACEMENT



BITUMINOUS PAVEMENT

CITY OF PORTLAND
 APPROVED SITE PLAN
 Subject to Dept. Conditions
 Date of Approval: 9/22/05

Site Details
 11 Bryant Street
 Portland, ME

Sept. 1, 2005

Mohr & Seredin
 Landscape Architects, Inc.