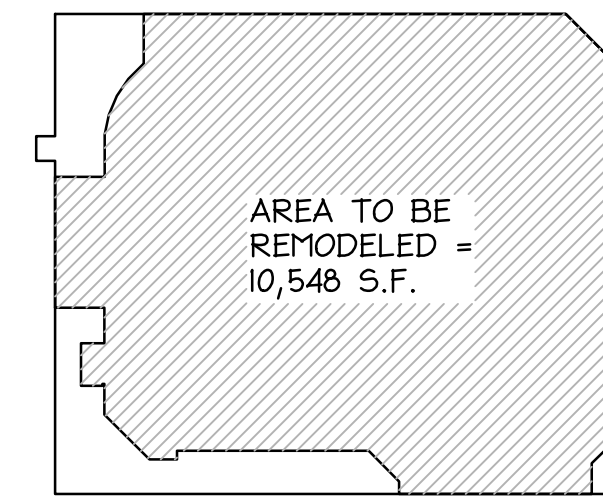
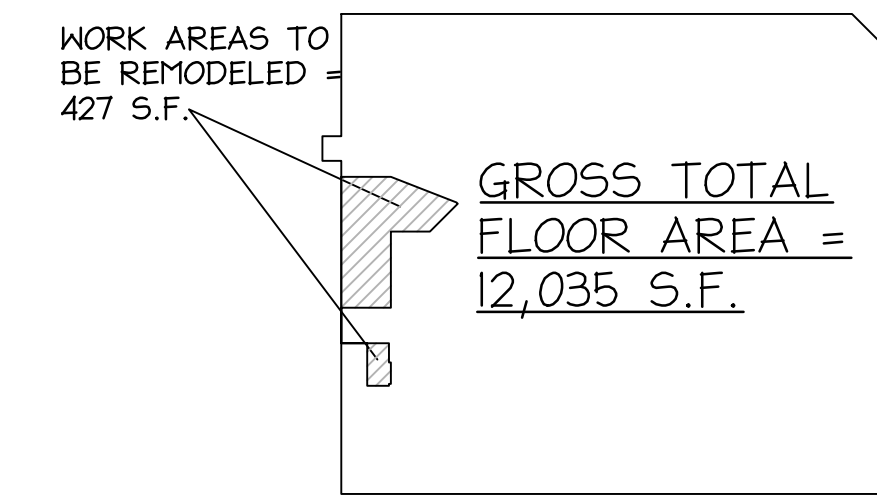


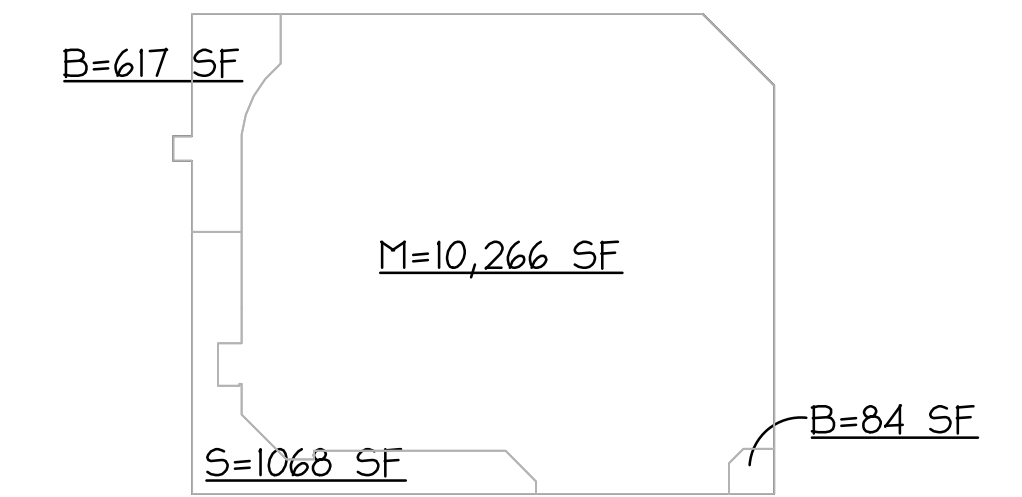
SPACE RESERVED FOR CITY OF PORTLAND, MAINE ELECTRONIC STAMP



RITE AID STORE #4133
PORTLAND, MAINE



RITE AID STORE #4133
PORTLAND, MAINE



M=10,266 SF / 30 = 343 PERSONS
B=701 SF / 100 = 7 PERSONS
S=1,068 SF / 300 = 4 PERSONS
TOTAL OCCUPANTS = 354 PERSONS

RITE AID STORE #4133
701 FOREST AVENUE
PORTLAND, MAINE

LIFE SAFETY CODE SPECIFIC REVIEW:

2009 NFPA LIFE SAFETY 101 CODE

SEE BUILDING AND LIFE SAFETY CODE REVIEW UNDER SEPARATE COVER AS WELL WHERE THIS INFORMATION IS DUPLICATED AND INCLUDES ADDITIONAL CODE STUDY INFORMATION FOR 2009 INTERNATIONAL BUILDING CODE AND 2009 INTERNATIONAL EXISTING BUILDING CODE.

LIFE SAFETY CODE SPECIFIC REVIEW:

- 37.1 - MERCANTILE.
- 37.1.4.2.1 - SUBCLASSIFICATION OF OCCUPANCY - CLASS 0B*.
- 37.1.6 - MIN. CONSTRUCTION REQUIREMENTS. NONE. SEE IBC CODE REQUIREMENTS LISTED ABOVE (2B, NON-COMBUSTIBLE).
- 37.2 - MEANS OF EGRESS REQUIREMENTS. REFERS TO CHAPTER 7 OF NFPA LIFE SAFETY 101.

CHAPTER 7 MEANS OF EGRESS

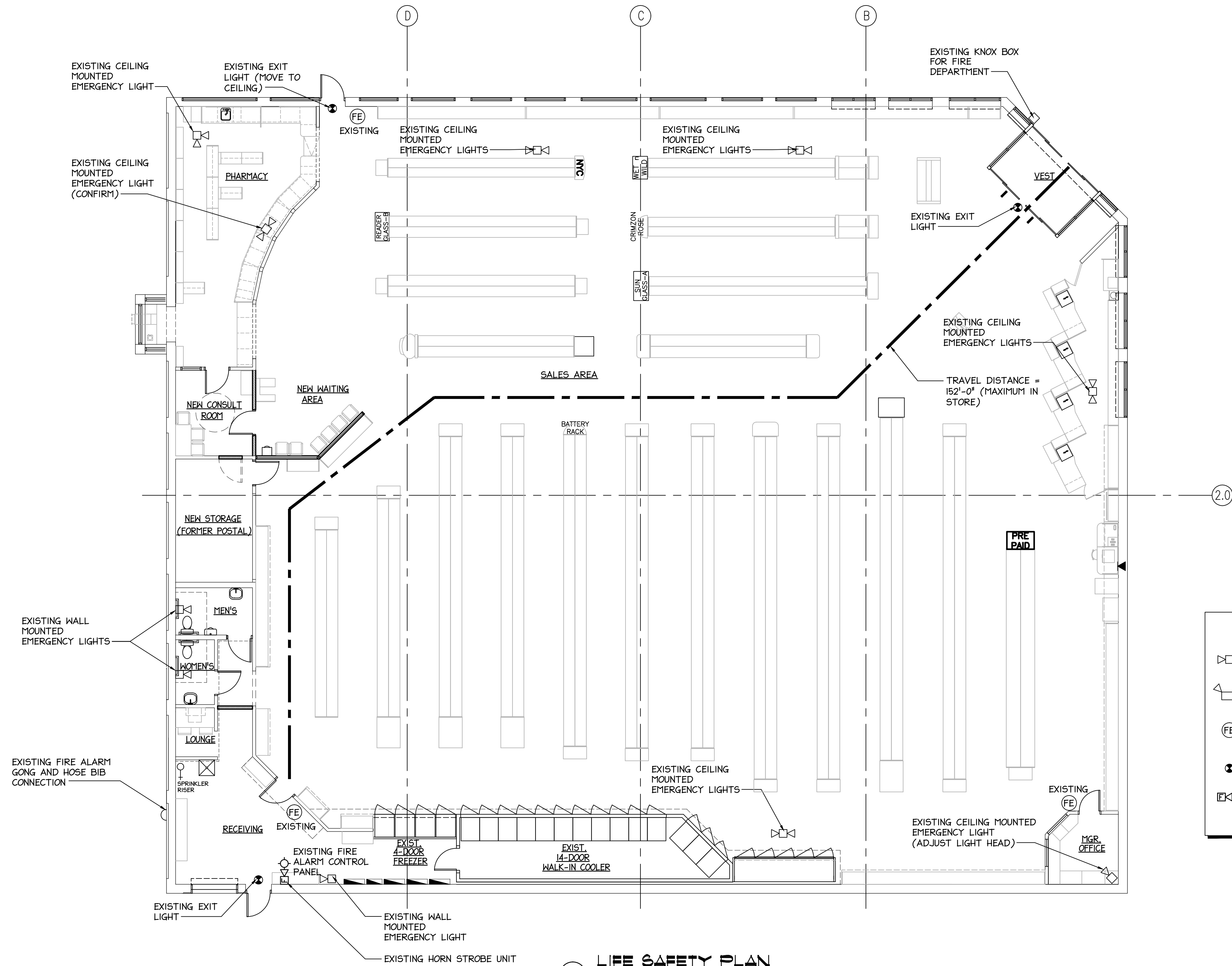
- 7.1.3.1 - EXIT ACCESS CORRIDORS. N/A
- 7.1.3.2 EXITS
- 7.1.5 HEADROOM. CONFORMS. > 7'-6" MIN.
- 7.2.2 STAIRS. N/A.
- 7.2.2.6.3.1 OUTSIDE STAIRS. CONFORMS.
- 7.2.5 RAMPS. N/A.
- 7.3.1.2 OCCUPANT LOAD FACTOR (NO CHANGES). SEE IBC CHAPTER 10 INFORMATION ABOVE.
- 7.3.2 MEASUREMENT OF MEANS OF EGRESS.
- 7.3.4 MIN. WIDTH. 36" FOR NEW CONSTRUCTION. CONFORMS.
- 7.3.4.1.2 MIN. WIDTH 28" FOR EXISTING BUILDINGS. CONFORMS.
- 7.4 NUMBER OF MEANS OF EGRESS. 2 MIN., 3 PROVIDED (EXISTING).

7.5 ARRANGEMENT OF MEANS OF EGRESS.

- 7.5.4.2 CONFORMS FOR EXIT REMOTENESS.
- 7.9 EMERGENCY LIGHTING. COMPLIES.
- 7.10 COMPLIES FOR EXIT SIGNAGE.

BUSINESS USE SPECIFIC SECTIONS:

- 37.2.2 MEANS OF EGRESS. COMPLIES.
- 37.2.2.3 STAIRS. N/A.
- 37.2.4 NUMBER OF EXITS, COMPLIES. 3 PROVIDED.
- 37.2.5.1 MEANS OF EGRESS ARRANGEMENT. EXISTING COMPLIES.
- 37.2.5.2 DEAD END CORRIDORS 50' MAX. COMPLIES.
- 37.2.5.3.1 COMMON PATH OF TRAVEL (SPRINKLERED). 100' MAX. COMPLIES.
- 37.2.5.4 AISLES. COMPLIES.
- 37.2.5.7 ONE-HALF OF EGRESS CAPACITY AT STREET ENTRANCE. COMPLIES (72' EGRESS WIDTH PROVIDED).
- 37.2.5.8 EGRESS THROUGH CHECKOUTS. NONE.
- 37.2.5.10 WHEELED CARTS. COMPLIES.
- 37.2.6 TRAVEL DISTANCE (SPRINKLERED) 250' MAX. COMPLIES.
- 37.2.8 ILLUMINATION OF MEANS OF EGRESS. COMPLIES
- 37.2.9 EMERGENCY LIGHTING. COMPLIES. EXIT SIGN AT REAR SALES AREA EGRESS DOOR IS WALL MOUNTED AND WILL BE SUSPENDED FROM CEILING FOR BETTER VISIBILITY. NOTED ON PLAN A-2.1 AND L5-1.
- 37.3.3.2.1 INTERIOR WALL FINISHES - TO COMPLY WITH SECTION 10.2.
- 37.3.4 DETECTION, ALARM & COMMUNICATION SYSTEMS. HAS EXISTING MONITORED FIRE ALARM SYSTEM. UPGRADED IN 2013.



LEGEND

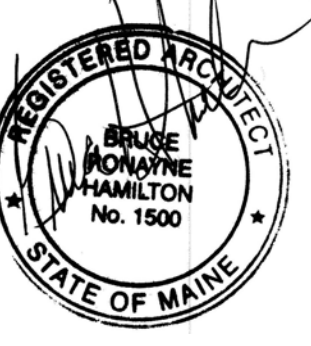
- CEILING MOUNTED EMERGENCY LIGHT UNIT
- WALL MOUNTED EMERGENCY LIGHT UNIT
- WALL MOUNTED FIRE EXTINGUISHER
- EXIT LIGHT
- HORN STROBE UNIT (AS REQUIRED BY FIRE DEPARTMENT)

LIFE SAFETY PLAN
SCALE: 1/8" = 1'-0"

BRUCE RONAYNE HAMILTON ARCHITECT

ARCHITECTURE LAND PLANNING INTERIOR DESIGN 3D VISUALIZATION

833 TURNPIKE ROAD
P.O. BOX 104
NEW IPSWICH
NEW HAMPSHIRE 03071



THIS DESIGN AND THE DRAWINGS THEREFORE PREPARED FOR THIS PROJECT ARE THE PROPERTY OF THE ARCHITECT. BRUCE RONAYNE HAMILTON, ARCHITECT INC. AND THE DESIGN AND/OR DRAWING MAY NOT BE REPRODUCED OR TRANSMITTED IN ANY FORM OR BY ANY MEANS, ELECTRONIC OR MECHANICAL, INCLUDING PHOTOCOPYING, RECORDING, OR BY ANY INFORMATION STORAGE AND RETRIEVAL SYSTEM, WITHOUT THE EXPRESS WRITTEN PERMISSION OF THE ARCHITECT. BRUCE RONAYNE HAMILTON ARCHITECTS INC. IS NOT RESPONSIBLE FOR ANY VIOLATIONS OF ANY BUILDING DEPARTMENT, UNLESS A DOCUMENT BEARS THE ORIGINAL SIGNATURE OF THE ARCHITECT. BRUCE RONAYNE HAMILTON ARCHITECTS INC.

PROJECT:	ISSUED FOR GC BIDDING/BUILDING PERMIT
DATE:	1-7-14
SCALE:	AS SHOWN
SHEET NO.:	1

PROJECT: RITE AID STORE #4133 PPR
701 FOREST AVENUE
PORTLAND, MAINE
SUBJECT: LIFE SAFETY PLAN

JOB NO.:	13-131
SCALE:	1/8" = 1'-0"
DATE:	1-7-14
DRAWN BY:	LS-1

LS-1