



THIS DESIGN AND THE DRAWINGS THEREFOR PREPARED FOR THIS PROJECT ARE THE PROPERTY OF THE ARCHITECT. BRUCE RONAYNE HAMILTON ARCHITECT INC. AND THE DESIGN AND/OR DRAWING SHALL NOT BE REPRODUCED OR TRANSMITTED IN ANY FORM OR BY ANY MEANS, ELECTRONIC OR MECHANICAL, INCLUDING PHOTOCOPYING, RECORDING, OR BY ANY INFORMATION STORAGE AND RETRIEVAL SYSTEM, WITHOUT THE EXPRESS WRITTEN PERMISSION OF THE ARCHITECT. BRUCE RONAYNE HAMILTON ARCHITECTS, INC. AND BUILDING DEPARTMENT, UNLESS ANY BUILDING DEPARTMENT, UNLESS ANY BUILDING DEPARTMENT, UNLESS ANY BUILDING DEPARTMENT. THE ORIGINAL SET OF DRAWINGS SHALL BE KEPT BY THE ARCHITECT. BRUCE RONAYNE HAMILTON ARCHITECTS INC.

ISSUED FOR GC BIDDING/BUILDING PERMIT

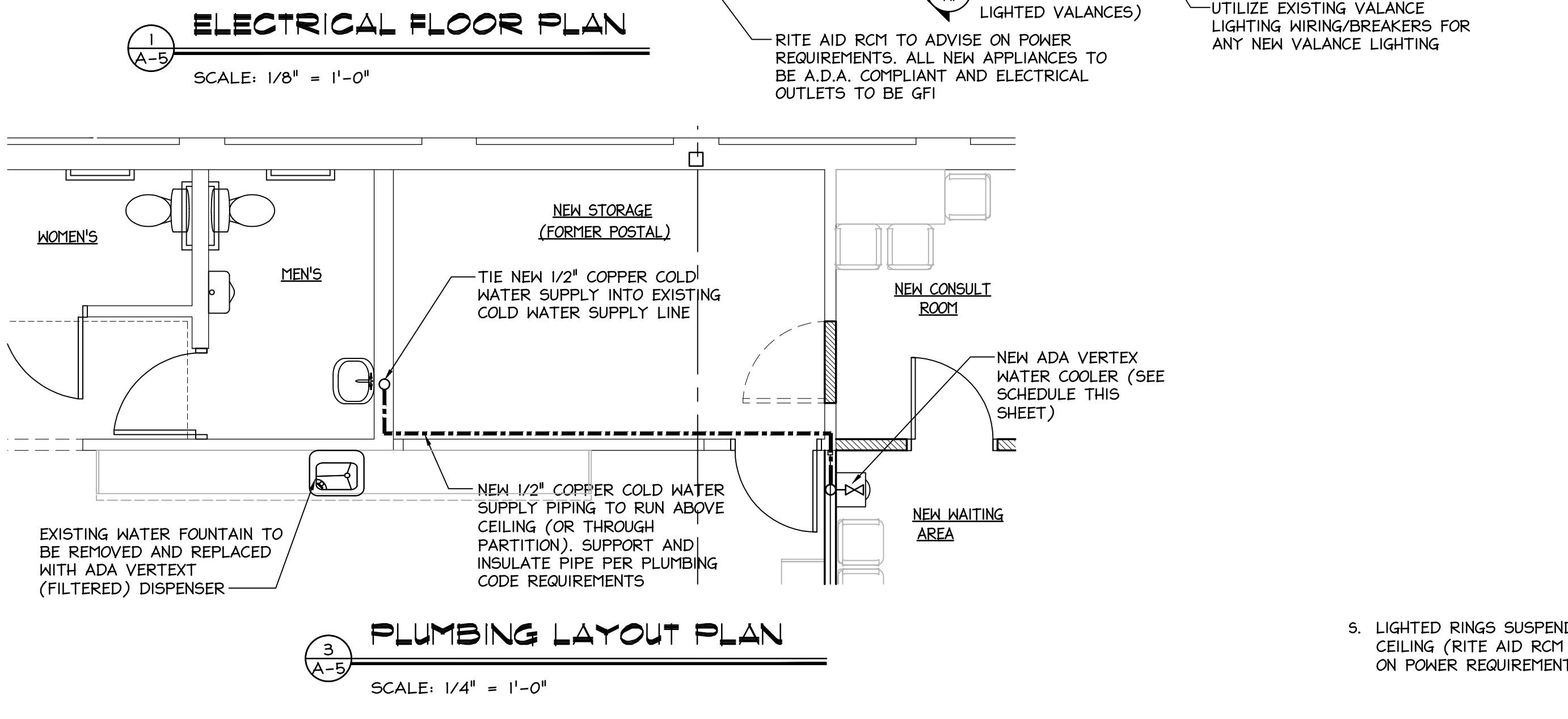
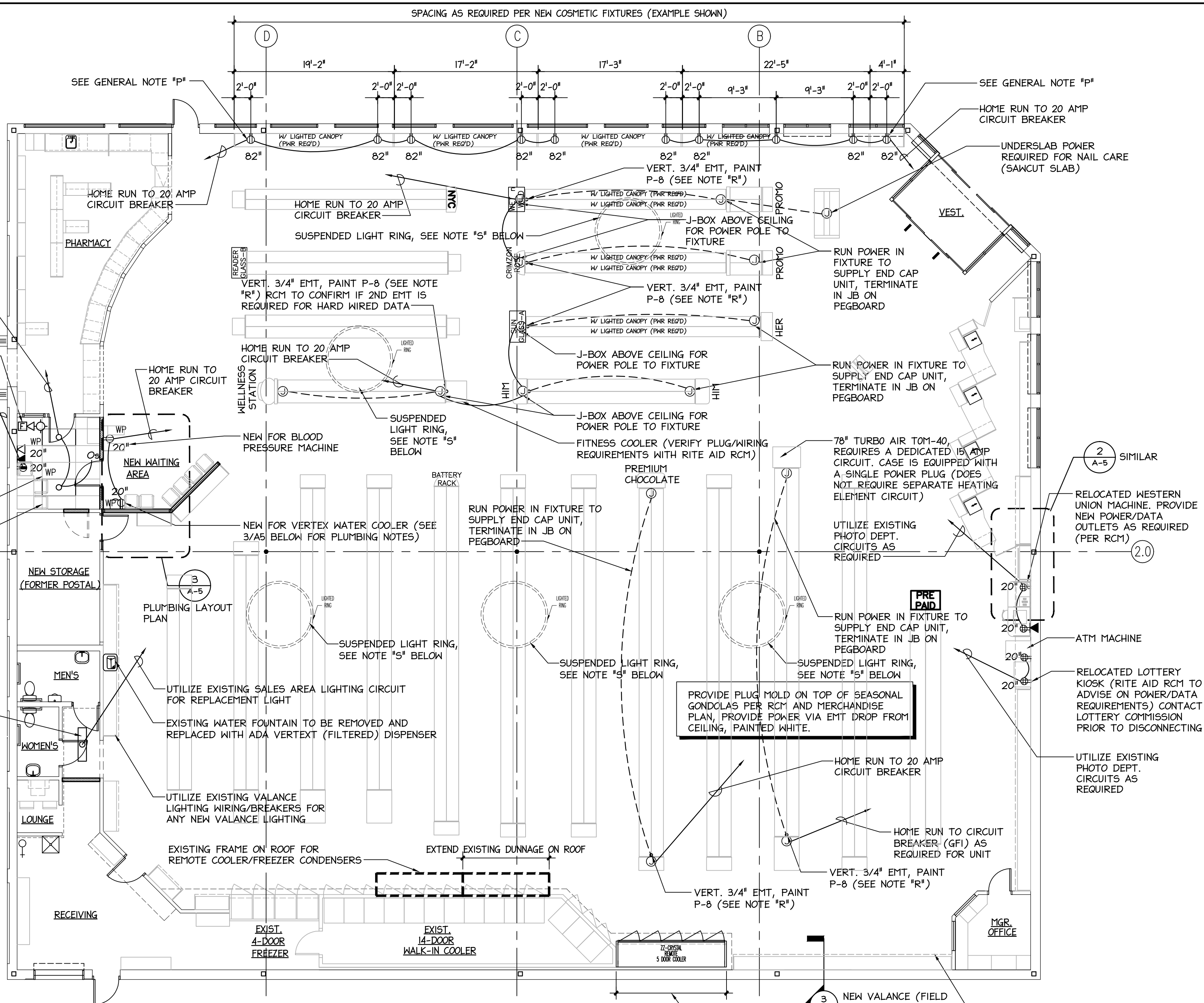
PROJECT: **RITE AID STORE #4133 PPR**
10 FOREST AVENUE
PORTLAND, MAINE

SUBJECT: **ELECTRICAL LAYOUT PLAN**

DATE: 1-7-14
DRAWN BY: [Signature]

- ### GENERAL NOTES
- UNLESS OTHERWISE NOTED, ALL RECEPTACLES ARE MOUNTED AT 20" AFF.
 - UNLESS OTHERWISE NOTED, ALL MOUNTING HEIGHTS LISTED ARE TO THE CENTER OF THE WALL BOX OR DEVICE.
 - OUTLETS AND JUNCTION BOXES IN FINISHED SPACES AND EXTERIOR ARE RECESSED UNLESS OTHERWISE NOTED.
- ### LEGEND
- ⊕ DUPLEX RECEPTACLE - MOUNT AT 20" A.F.F. UNLESS OTHERWISE NOTED
 - ⊕ WP DUPLEX RECEPTACLE - WEATHER PROOF
 - ⊕ GFI DUPLEX RECEPTACLE - GROUND FAULT INTERRUPTER
 - ⊕ WP GFI DUPLEX RECEPTACLE - WEATHERPROOF W/ GROUND FAULT INTERRUPTER
 - ⊕ QUAD RECEPTACLE - ISOLATED GROUND
 - ⊕ DUPLEX RECEPTACLE - ISOLATED GROUND
 - ⊕ QUAD RECEPTACLE - MOUNT AT 20" UNLESS OTHERWISE NOTED
 - ⊕ FLOOR MOUNTED DUPLEX RECEPTACLE INSTALLED UNDERNEATH GONDOLA.
 - ⊕ JUNCTION BOX
 - HOMERUN TO PANELBOARD
 - ABOVE GROUND CONDUIT
 - ▶ DATA RECEPTACLE
 - ▷ TELEPHONE RECEPTACLE

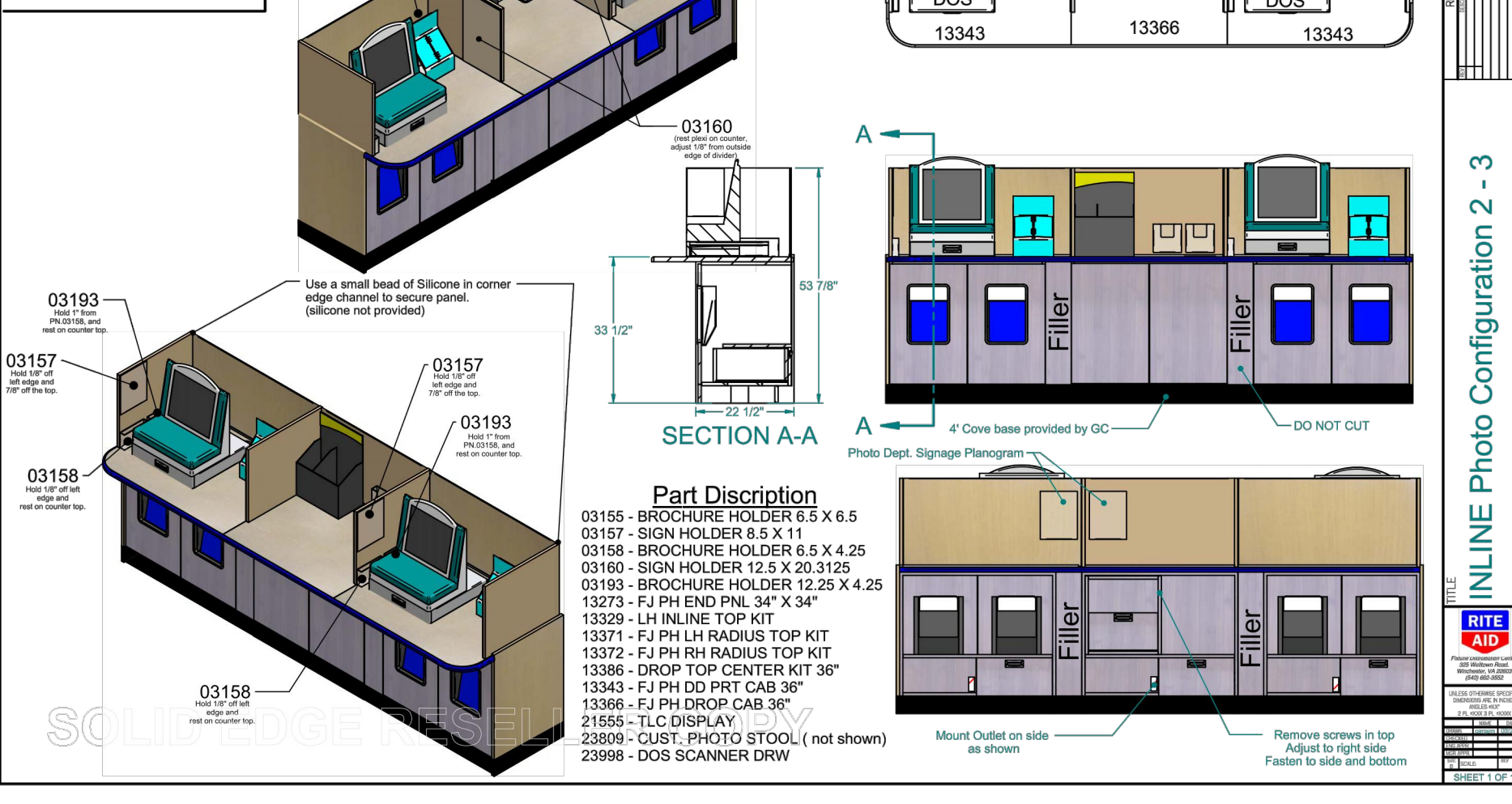
- ### GENERAL NOTES :
- ALL TELEPHONE, DATA, COAX AND OTHER LOW VOLTAGE WIRING SHALL BE SUPPORTED WITH HANGERS ATTACHED TO ROOF STRUCTURE.
 - ALL WIRE TO BE RUN FROM THE CIRCUIT PANELS TO JUNCTION BOXES ARE TO BE IN EMT (ELECTRICAL METALLIC TUBING) UNLESS APPROVED IN WRITING BY THE RITE AID CONSTRUCTION MANAGER.
 - FLEX CONDUIT CAN ONLY BE USED FOR THE FINAL CONNECTION FROM A JUNCTION BOX TO EQUIPMENT OR LIGHT FIXTURE. IT IS NOT TO BE RUN FROM THE CIRCUIT PANEL TO A JUNCTION BOX OR WITHIN A WALL OR PARTITION.
 - ALL 20 AMP CIRCUITS ARE TO USED 12 GAUGE COPPER WIRE MINIMUM.
 - ALL WALL PLATES ARE TO MATCH EXISTING PLATES IN SIZE, COLOR AND MATERIAL.
 - ALL PHONE AND DATA CABLES ARE TO BE WIRED TO J-BOXES WITH PLATES WITH FEMALE JACKS LABELED AS NOTED ON DRAWINGS.
 - ALL COMPUTER AC WALL OUTLETS ARE TO BE ISOLATED GROUND TYPE (WITH SMALL ORANGE TRIANGLE SYMBOL).
 - POWER POLE DROPS FROM CEILING SHALL BE PROVIDED PER DIRECTION OF RITE AID CONSTRUCTION MANAGER.
 - ALL NEW OUTLETS NEAR WATER OR POSSIBLE WET AREAS ARE TO BE GFI PROTECTED.
 - ALL NEW OUTLETS IN WAITING AREA AND CONSULTATION AREAS ARE TO HAVE WEATHER PROOF COVERS.
 - STANDARD AC WALL OUTLET HEIGHT SHALL MATCH THE HEIGHT OF EXISTING OUTLETS, OR SHALL BE INSTALLED 20" A.F.F. IF THERE ARE NO EXISTING OUTLETS IN THAT AREA.
 - ALL ELECTRICAL WORK TO BE DONE IN ACCORDANCE WITH THE LATEST NEC, STATE AND LOCAL CODES.
 - ALL PLUMBING WORK TO BE DONE IN ACCORDANCE WITH THE LATEST STATE AND LOCAL CODES.
 - ELECTRICAL AND PLUMBING CONTRACTORS TO APPLY FOR INDIVIDUAL PERMITS AND TO PAY ASSOCIATED FEES TO MUNICIPALITY.
 - POWER AND DATA DROPS AT SALES FIXTURES: 3/4" EMT PAINTED P-8 (TYPICAL UNLESS OTHERWISE NOTED).
 - NEW OUTLETS AT COSMETIC WALL DISPLAY: LOCATE AT HEIGHTS NOTED ON PLAN. SPECIFIC TO EACH COSMETIC BRAND (VERIFY WITH RCM). RUN POWER FROM EXISTING VALANCE LIGHTING TO OUTLET LOCATIONS (VERIFY LOCATIONS WITH RCM AND FINAL MERCHANDISING PLAN). "PIG-TAIL" OFF WIRING AWAY FROM LINE OF SITE. MOUNT OUTLETS TO PEGBOARD. SPACING FROM LINE OF SITE. MOUNT OUTLETS TO VARY PER STORE. LENGTH OF DISPLAY MAY VARY PER STORE. INSTALL OUTLETS PRIOR TO MERCHANDISE STOCKING (COORDINATE WITH STORE MANAGER).
 - REFER TO SEGMENTATION SCOPE OF WORK FOR ADDITIONAL NOTES & G.C. TASKS.
 - CONDUIT PENETRATIONS AT CEILINGS SHALL BE FINISHED WITH A PIPE COLLAR (PER APPLICABLE SEG SEGMENTATION REMODEL PROGRAM MANUAL DOCUMENTS UNDER SEPARATE COVER). REFER TO RITE AID SEGMENTATION REMODEL CONSTRUCTION UPDATE BULLETIN FROM RCM FOR MOST RECENT INSTALLATION PRACTICES ADOPTED BY RITE AID. ALL CONDUITS TO BE VERTICAL WITH NO BENDS.



SPACE RESERVED FOR CITY OF PORTLAND, MAINE ELECTRONIC STAMP

Notes:

- Must dowel Cabinets to Counter top.
- After the installation of the counter top. Cut stretcher to accommodate grommets.



FIXTURE	DESCRIPTION	CW	HW	SAN	VENT	MANUFACTURER	MODEL NUMBER	REMARKS
WF	WATER COOLER	1/2"	-	1-1/2"	1-1/4"	VERTEX	PWC1010F	PURE WATER COOLER W/ #C4160 CUP HOLDER SUPPLIED AND INSTALLED BY G.C. SHALL PROVIDE 1/2" DCW CONNECTION. DRAIN NOT REQUIRED FOR UNIT.